

Product datasheet for **MG224051**

Synm (NM_201639) Mouse Tagged ORF Clone

Product data:

Product Type:	Expression Plasmids
Product Name:	Synm (NM_201639) Mouse Tagged ORF Clone
Tag:	TurboGFP
Symbol:	Synm
Synonyms:	4930412K21Rik; AI852401; Dmn; E130104F11; Syn; Synemin
Mammalian Cell Selection:	Neomycin
Vector:	pCMV6-AC-GFP (PS100010)
E. coli Selection:	Ampicillin (100 ug/mL)
ORF Nucleotide Sequence:	>MG224051 representing NM_201639 Red=Cloning site Blue=ORF Green=Tags(s)

TTTTGTAATACGACTCACTATAGGGCGGCCGGAATTCGTCGACTGGATCCGGTACCGAGGAGATCTGCC
GCC**CGATCGCC**

ATGCTGTCCTGGCGGCTGCAGACGGGCTCTGAAAAGGCGGAGCTGCAGGAGCTCAACGCCCGGCTTTACG
ACTACGTGTGCCGGTGCAGAGCTGGAGCGCGAGAACCCTGCTACTGGAGGAGGAGTTGCGCAGCCGGCT
GAGCCGGGAGGACCGCTGGGCTGAGGATCAGGCACTCTACGCCGAGGAGGCGCGCAGCCTACGACAGCAG
CTAGATGAACTGAACTGGTCCACAGCCCTGGCCGAGGGCGAGCGCAGCGCTGCGGAGGGAACCTGCTGG
AGCTGCAGCGGGAGGGTGTGGAAGCCGGCACTGCCCGCAGCCGCTGGATGCCGAGCTGGGAGCGCAACG
GCGGGAGCTAGAGGAGGCTCTGGGCGCGCGCCGCCCTCGAGGCGCTGCTGGGCCGGCTGGAACTGAG
CGCCGCGACTTGGACGCTGCCACGAACGCCAAGTGCAGATCTACGAGCCCGCGCTGCCAGCCTACCA
TGCACTTCCGAGCCCGGCCACAGCCCGCCGCGCCCGCGCCTGCGGGACGTGCACGACAGCTA
CGCCCTGCTGGTGGCCGAGTCTGGAGGGAGAGCGTGCAGCTGTACGAGGACGAGGTGCGCGAGCTGGAG
CAGGCGCTGCGCCGCGGCCAAGAGAGCCGGCTCCAGGCGGAGGACGAGGCGCGGCTGTGCCGCGAGGAGG
CAGACGCGCTGCGGAACAGGCGCTGGAGTTGGAGCAGCTGCGCGGAGGCTGGAGGATGAGCTGCTGCG
GATGCGCGAGGAGTACGGGATGCAGGCGGAGGAGCGGCAGAGAGTGATTGACAGCCTGGAGGATGAGAAG
GAAGCCCTTACCTTGGCCATGGCTGACCGGCTGCGGGATTACCAGGAGCTCCTGCAGGTGAAGACTGGAC
TCAGCTTGGAGGTAGCCACCTACAGGGCCTTGTGGAAGGAGAAAAGCAATCCGGAGATATTGATCTGGAC
TGAGAACATTGAAAACGTGCCACAAGAGCCAGAAAACACATCCTATCGCTACACCAACTCAGTATTGCAG
AGGAAAAATGAGAAAAATCTCTTCCAAGGCGAAAAACACCTTGGGAGCTGTAATCACAGCTCGGCCCT
CGTATTCTAACTGGCCAGGGCACCTTACTCACAGACAACCACAGCTGTAGGAAGTGTGCCAGAAGGGG
TCTCTGACCTCCCGCATTCTTCTCAGCTACAACCTCAGGGCAGCAAAAAGCCCTGGAGAAAACCATC
AGCAGCCGAGCAATTTAAGACCGGTACGCCAACCCACGGCTTTCTAAGAAACTGATGCTCAAATGA
AAACACTCCCCATAGATCAAAGTCAAGGCACGGGGGACCCACGCACGGCGGGCTACAGAGTCTGT
TATTACCAGAGATCATACAGAGTACCAGGGCCATGTGGCAGCAGGTGCCGTGAGCAGCACTCCGTCA



[View online >](#)

AATGAGAGGACTGTCATTCTGGGAAAGAAATTAGAAGCGCAAGCCACTAAAGAACAAGAAAGGGACAGAT
 CAGGGGTCATCAGAAATAAGCCAGAAGAGAAAATGTTTATTCTAAAGAGAAGGCTTCAGAGGAAAGAAA
 CTTGAGGTGGGAAGAGCTAACCAAGTTAGATAGAGATGCCAGAAAAGAGAGAAAGCCGGCATTGAGGGAT
 GAGGCCAGAGAGAAGGAAGCACTGAAGGAGAGAAGTGTAAAAGAAAGAGAGGTGCCCATCAGTCTAGAAG
 TATCCCGGGCAGCAGAGCAGAGGTGCCACCATACACTTGCAGTCACCTGGAAGGAAGGACGTTAGCCA
 CAGTGGGGGAAGAGAGGACAGACCAAAAGAGACAAGGTTCCGGCTGGATACCCAGGACACTGCCAGCTCT
 CTGCAAAAGTGACTCAACGACAGAAACCATAGCCGAAAGCATTGTACCACCATCCTTAAGCAGTTTACC
 AGTCTCCAGGTGCCGAGGAGGAGGCCACTTCTTTCCGGACACAAGGTCACTTATGTGGACAGGAAAGA
 GTTTCCTGGTGATGGGAAAACCAAGACAGAAATCGTTGTGGAGTCGAAGCTGACAGATGTTGTTGATGTT
 TCTGATGAAGCAGGCCTGGACTACCTTCTAAGCAAGGATGTCAAGGAAGTAGGACTGAAGGGGAAGTCAA
 CGGAGACGATGATCGGAGAGATGATCAACTGGGTCTGAAAGGCAGGGAGGGGAGAGCTAAAGTCGTA
 TGTGGAGATTGTGAAGAGCCCATGAGCTACATAGGTGGTGGGAAAATAGACTTTTCTACCCCTTTTCA
 GTAGAAGAAGTCGACGACGTGTCTCCAGCCCCAAGGGCTTTGTGGAGGAAGAGGATGGTGAAGGAGAGA
 CCCACATGGCATTCTCAATGCGTCCACATCAGACCAACAGCCCCAGGGGACCATCCCTCACGTGGAAGA
 AGTGACGGAGCGGGCGACTCAGAGGGGAGCAGAGCTATTTTGTGTCTACCCAGATGAGTACCCCGG
 GGCATGACAGAGAAGATGATGGCTCAGTGTATGGGCAGATTATATCGAGGAAGAGTCTACCATCCGGT
 ACTCATGGCAAGACGAAATTGCGCAGGGGACCTGGAGAAGGAAAATGAGAGGTGACGTGGGGGAGAGAA
 GCCTGTGAAGTCTGGAGGTCCAGCACTTCCCTGGGTGGTGTATTGGTTCTGCTCACTTGAAGGAA
 GAAGCCAGTGGTGAACCTCCGTGCTGAACCCACAGTCATTGAGAAAAGAGATCAAAATACCCGATGAATTCC
 ACACCTCCATCAAGGGTGTCTTCCAGTGAGCCCCGGCACCAGCTGGTGGAGGTGATCGGGCAGCTGGA
 GAAACATTGCCCCAGCGCATGAAGGAGGAGCTGTCTGCCCTGACCAGACAGAGTCAAGGAGAGTCAAGG
 AGCGTTTCTGTGGACGTAAGAAAAGTCCAGAGCGCTGCTGGTGGTCTGTGACTTTGAGGCTGAGGTCA
 ACCTCTCACAGACTGTAGATGCTGATCAGTTGGACCTGGAGCAGTTGAGCAGAGATGAAGTGGGAAAT
 AGAGAGGGCTGTGGAGTCTGTGGTCAGAGAGAGCTTGGCCAAGCGCTCCAGCCAGTGCCTAGAAGCCCA
 GACAGGGAAGATGGAGAGGAGGTGCCTGCTGGTGGCATTCTCTCAAGCGCTGGGCCACCAAGGGAGCTGT
 ATAGCCCATCTGGTGAGAGGGATGATGCTGGCCAGGTCTCTCCAGCTCAGATCAGCGTGTACCCAGGG
 CCCAGTGTGAGTACTGTGGAAGTGACCAGCCCAACGGGTTTTGTACAGTCTCATGTGCTGGAGGATGTG
 AGCCAGTCTGTAAGGCATGTTAACTAGGTCCCACTGAAATGTGGAGGACAGAACAGGTGACCTTCGGAG
 GACCCACCGCACAGGTGGTGGAGGTAAGTGGAGACTTCAGCGAGGCAGTCAGCTCTGAGGGAGCCAGCCG
 CTCTGTGAGGCACATTACACTGGGTCCCATCAAAGCCAAGTGTCCACAGAAGTCATTTTCCGAGGCTCT
 GTGCCACTGTCAGGAAACAGGAGACACAGAAAAGCCTGGCCAGTGGTACTGTCTGTGGGAGCTGACA
 TCTCAGGGAGCGGCAGGATGCCTGGCTCTGAGCGGTCTCACACTGAGAAAGAAATTCGTTTTCAGGGTCC
 TGTTTTCTGGGACAGCCAGGTGGTGGTAACTTTGCAACTGAAGAGTCAGTGGGTAGCCAGACTTTTGTA
 AGGAGTCTCCAGTTAGGCCCAAAGAAGGGTTCAGAGAGGAAATCCAGTTCATAGCTCCTATCCCAGACA
 AGGTAGGGTGGGAGAAGAGGATTTCTGAGCACACCAAAGTGTGCTAGAGAGGGCTACATCCATCCAGCG
 TATTGACATTGTGCCAGAGGTACCTAGCTTCCAAGCAGATGGCCCCACAGACATTGGAATTCAGGGAC
 TCAGAAGACATGGTTATGGTGAAGGTTACAGCAGGCACAATCCAGGCCACTCACAAATTCACCTCAGATA
 GAGAAATCCTCCAGAACAAGAGAACACATTCCAGAGGGTCATTTCTGGGTCTCCTCCAGACAGTGTGGG
 CGACACGGGAGCAGAGGTGACAGCAACGTCAGCAGGTCCTTTCCGGCACATTCAAATAGGTCTACAGAG
 GAAGAACCCTCTGAATACTTTGTACCCGGGAGACCCGTATCTAAAACATTTGACTTGATGGTTCGGTGG
 CGTCCCTGGGCTGGTGGGGGAGCAGACGGTGGTAGCACACCGTGTGCGATTGCACTGGGGCCAAAGA
 AACTTCATTTACTTTCCAGATGGATCTGAGCGACACGAGAGCGATCCGCAGCTGGACCCGAGACACAGGG
 TCGGAAGTGAAGCTCACGGCGTGTCTACCGTGGTGGCTGGAGAATTGCACACAGTAGGGATGAGCGAG
 TGGCCAGCACTGGCTCTGGGGCTCCCTGGGGATGCACACCAGGCCCTGGAGAGAAAGGCACGGAGCA
 GGCTGGATTTGACAAGACGGTACAGTTGCAGAGAATGGTAGACCAAGGTCGGTGGCCTCAGATGAGAAG
 AAAGTGGCTCTTCTTTATCTAGACAATGAAGAGGAGGAGGAGGAGGGCGAAGGGTGGTTT

ACGCGTACGCGGCCGCTCGAG - GFP Tag - GTTTAA

Protein Sequence: >MG224051 representing NM_201639
 Red=Cloning site Green=Tags(s)

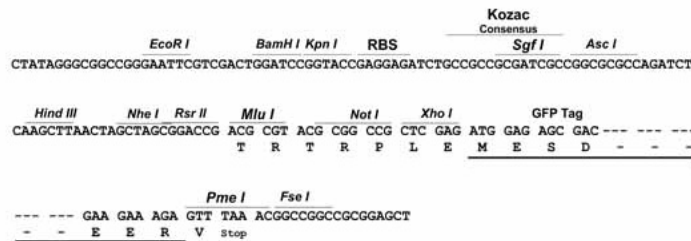
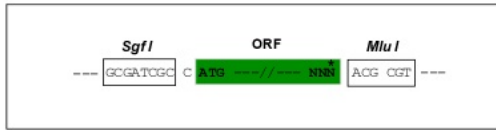
MLSWRLQTGSEKAEQLNARLYDYVCRVRELERENLLLEELRSRLSREDRWAEDQALYAEARSRLRQQ
 LDELNWTALAEGERDALRRELELQREGVEAGTARSRLDAELGAQRRELEALGARAALALLGRLETE
 RRDLDAHERQVRDLRARAASLTMHFRARATSPAAPPRLRDVHDSYALLVAESWRESVQLYEDEVRELE
 QALRRQESRLQAEDEARLCAQEADALRNQALELEQLRARLEDELLRMREEYGMQAEERQRVIDSLEDEK
 EALTLAMADRLRDYQELLQVKTGLSLEVATYRALLEGESNPEILIWTEINIENVPQEPNRTSYRYTNSVLQ
 RKNEKNLFPRRKTPWAAVNHSSASYSNWPGLDSQTTTAVGSAARRGLLTSRHSSATTSGQQKPLEKTI
 SSRANLRPVTPTHGFLRNTDAQMKTLPHRSKVEGTGDTHARRATESVITRESYRGHQGHVAAGAVSSTPS
 NERTVILGKKLEAQATKEQERDRSGVIRIKPEEKMFDSKEKASEERNLRWEELTKLDRDARKRESRHLRD
 EAREKEALKERSVKEREVPI SLEVSRGSRAEVSTIHLQSPGRKDVSHSGGREAEKTRFRLDTQDTASS
 LQSDSTTETIAESIVTTILKQFTQSPGAEEEATSPDTKVTYVDRKEFPDGGKTKTEIVVESKLDVVVDV
 SDEAGLDYLLSKDVKEVGLGKSTETMIGEMINLGLKREGRAKVVNVEIVEEPMSYIGGKIDFSTPFQ
 VEEVDDVSPSPKGFVEEEDGEGETHMAFSMRPHQTKQPQGTIPHVEEVTEAGDSEGEQSYFVSTPDEYPG
 GHDREDDGSVYGQIHIEEESTIRYSWQDEIAQGTWRRKMRGDVGGKPKVLEVPALSLGGAIGSAHLKE
 EASGELRAEPTVIEKEIKIPHEFHTSIKGVFSSEPRHQLVEVIGQLEETLPERMKEEL SALTQRSQGESG
 SVSVDVKKVQSAAGGSVTLMAEVNLSQTVADQDLLEQLSRDEAGEIERAVESVRESLAKRSSPVRSP
 DREDGEEVPAGGILFKRWATRELYSPSGERDDAGQVSPSSDQRTVQGPVSATVEVTSPTFVQSHVLEDV
 SQSVRHVKLGPTMEMWRTEQVTFGGPTAQVVEVSGDFSEAVSSEGASRSVRHITLGPHQSVSTEVIFRGS
 VPTWQETGDTEKPGPVVLSVGADISGSGRMPGSERSHTKEIRFQGPVSGTAQVGGNFATEESVGSQTFV
 RSLQLGPKKEGFREEIQFIAPIDKVGWGEEDSEHTKVSLEKATSIQRIDIVPQRYLASKQMAPQTLFRD
 SEDMVMVEGSAGTIQATHNFTSDREILQNKENTFQRVISGSPDSDGTGAEVTANVSRSFRIHQIGPTE
 EEPSEYFVTGRPVSKTFVLDGVSASPLVGGADGGSTPCRIALGPKETSFTFQMDLSDTRAIRSWTRDTG
 SEVEAHGVSHRGGWRIAHSRDERVASTGSGASPGDAHQAPGKEKGTQAGFDKTVQLQRMVDQRSVASDEK
 KVALLYLDNEEEEEEGEGWF

TRTRPLE - GFP Tag - V

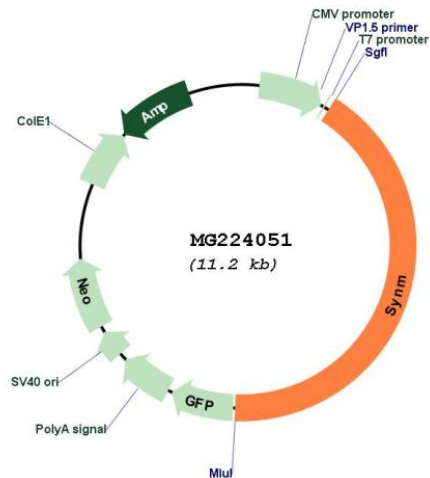
Restriction Sites: SgfI-MluI

Cloning Scheme:

Cloning sites used for ORF Shuttling:



Plasmid Map:



ACCN: NM_201639

ORF Size: 4683 bp

OTI Disclaimer: The molecular sequence of this clone aligns with the gene accession number as a point of reference only. However, individual transcript sequences of the same gene can differ through naturally occurring variations (e.g. polymorphisms), each with its own valid existence. This clone is substantially in agreement with the reference, but a complete review of all prevailing variants is recommended prior to use. [More info](#)

OTI Annotation: This clone was engineered to express the complete ORF with an expression tag. Expression varies depending on the nature of the gene.

Components: The ORF clone is ion-exchange column purified and shipped in a 2D barcoded Matrix tube containing 10ug of transfection-ready, dried plasmid DNA (reconstitute with 100 ul of water).

Reconstitution Method:

1. Centrifuge at 5,000xg for 5min.
2. Carefully open the tube and add 100ul of sterile water to dissolve the DNA.
3. Close the tube and incubate for 10 minutes at room temperature.
4. Briefly vortex the tube and then do a quick spin (less than 5000xg) to concentrate the liquid at the bottom.
5. Store the suspended plasmid at -20°C. The DNA is stable for at least one year from date of shipping when stored at -20°C.

RefSeq: [NM_201639.2](#), [NP_964001.2](#)

RefSeq Size: 7866 bp

RefSeq ORF: 4686 bp

Locus ID: 233335

UniProt ID: [Q70IV5](#)

Cytogenetics: 7 C

Gene Summary: Type-VI intermediate filament (IF) which plays an important cytoskeletal role within the muscle cell cytoskeleton. It forms heteropolymeric IFs with desmin and/or vimentin, and via its interaction with cytoskeletal proteins alpha-dystrobrevin, dystrophin, talin-1, utrophin and vinculin, is able to link these heteropolymeric IFs to adherens-type junctions, such as to the costameres, neuromuscular junctions, and myotendinous junctions within striated muscle cells (By similarity).[UniProtKB/Swiss-Prot Function]