

Product datasheet for **MG224050**

Whrn (NM_001008793) Mouse Tagged ORF Clone

Product data:

| | |
|---------------------------|---|
| Product Type: | Expression Plasmids |
| Product Name: | Whrn (NM_001008793) Mouse Tagged ORF Clone |
| Tag: | TurboGFP |
| Symbol: | Whrn |
| Synonyms: | 1110035G07Rik; AW122018; AW742671; C430046P22Rik; Dfnb3; Dfnb31; Ush2; Ush2d; w; wi |
| Mammalian Cell Selection: | Neomycin |
| Vector: | pCMV6-AC-GFP (PS100010) |
| E. coli Selection: | Ampicillin (100 ug/mL) |



[View online »](#)

ORF Nucleotide Sequence:

>MG224050 representing NM_001008793
 Red=Cloning site Blue=ORF Green=Tags(s)

TTTTGTAATACGACTCACTATAGGGCGGCCGGGAATTCGTCGACTGGATCCGGTACCGAGGAGATCTGCC
 GCC**CGGATCGCC**

ATGAACGCACAGCTGGACGGCCTGTCGGTGAGCTCGTCTCCACCGGCTCGCTGGGCTCGCGCGCGCGG
 CGGCGGGCGGCGGCGGGGCGCGGGTTGCGGCTGCTGTCTGCCAACGTGCGCCAGCTGCACCAAGCGCT
 CACGGCGCTGCTGAGCGAGCCGAGCGGGAGCAGTTCACTCACTGCCTAACCGCTACCACGCGCGCCGC
 AACGTCTTCGACCTGGTGCACCCCTGCGGCTCTGCTGGACAGCCCGTCAAGCGGCGTCTGCTGCCCA
 TGCTGCGTCTGGTCATCCCGGCTCCGACCAGCTGCTCTTCGACCAGTACACGGCCGAGGGCCTCTACCT
 GCCAGCCACCACCCCTACAGGCAGCCCGCTGGGCGCTCCCGACGGCGCGGGGCCCGGGAGGTGCGA
 CTGCTGAGCTGCGGCGGCCAAGGCCACGAGGGCTTGGGCTTACAGTCCGCGGGGGCTCGGAACACG
 GCGTGGGCATCTACGTGTCTTAGTGGAGCCGGGCTCCCTGGCAGAGAAGGAAGGTTGCGGGTCCGGGA
 CCAGATTCGCGGCTAACGATAAATCTTAGCCGGGTACCCACGCGGAGGCTGTCAAGGCTCTCAA
 GGTCCAAGAAGCTGGTGTCTGTATACTCAGCTGGGCGTATCCAGGGGGCTATGTGACCAACCACA
 TCTACACCTGGGTGGACCCACAGGGTCAAGCACATCCCTCCCTCCAGCCTGCCCCAGCCCATGGCAG
 CACCCTGAGACAGCGTGAAGATGACCGAAGGAGTACCCTCCACCTCCTGCAGAGTGGAGATGAGAAAAAG
 GTGAACCTGGTGTGGGGGACGGCCGGTCTTGGGCTCACGATCCGAGGTGGAGCAGAGTACGGCCTTG
 GCATTTACATCACTGGTGTGGACCCAGGCTCTGAAGCAGAGAGCAGCGGCTCAAGGTTGGAGACCAGAT
 TCTGGAGGTGAATGGGCGGAGCTTTCTCAACATCTGCATGATGAGGCAGTGAAGCTGTCAAGTATCC
 CGGCACCTCATCTGACGGTGAAGGACGTGGAAGGCTGCCACGCACGTACCACCGTGGACCAGACCA
 AGTGGATCGCCAGTTCGCGGATCGGGAAAGCGTCCGCAACTCAGCAGGGTTTCCAGGGACCACACAGA
 AGAAGGGACAAGCAAGCCAGGATTTACAAGGGCCAGCCGGCTCCAGGTGACCTGAGCAGCCTGGGG
 AATCAGACTCGTGCCTGCTGGACGACCAAGCCAGGCACCTGCTGACAGAGCAGGAGCGCCACCATGA
 TGTACTACCTGGCCAGTACCGTGGTGGCACCATCTGTGGAGGCCATGGTCATGGCACTGTTTGAAGT
 GCTCAACACACACGCCAAGTTCTCACTCTGTCTGAGGTGAGAAGCATCATCTCACCCCAAGACCTGGAC
 CGCTTTGACCACCTGGTCTGAGGCGGAGATCGAGTCTATGAAGGCGAGGCAGCCCCCGGCCCGGGG
 TTGGAGACACGTATTCATGGTTTCTACAGCGACACAGGCTCATCCACAGGCAGCCACGGCACCTTAC
 AACCGTCAGCTCGCCAGGAATACATTAGACCTGGAAGGAACCGGTGAGACCACCAGGGCAGCACCAAC
 GCTCTCCCGATGTGTCTGTGGATGATGTCAAATCCCCCTCAGAAGATCTGCCTGGTATCAAGCCACCTC
 TCCCCCACCACCCTGGCTCAAGGTATGACCGCTTGTGGCCAGCCACGGAAGCCAGGGAGGGAGGA
 CCCCACCTCTGTCTTCTGCTGCCACTCAGGATTGTCTTCTCAGCACCACGGAACCGCAGCCCGCCG
 CCAGGGACTGCTCCCACTCCGGGACCTTCTCAGCACAGGACTCTCCCTCCTCCCCATTATGCCTCCA
 TCTCCATGCCAACCCAGTTCCAGAAAGCCGCTGGACACCCACCTGGCCCTGGTTAACCAGCACCCAT
 CGGCCCTTCCCTCGAGTCCAGTCCCACTCACCTGAAGAGCCCTCCTGCAGAGACCCAGGAGCTGGG
 GCCTGCCTCCACCACCATCACCTCTGAACACCTGACGCCGTGGGTGCAAACCAGCACTTGTCTG
 TGGAGGTGCACCGTCCGGACAGTATCTGATGTGAATGAAGTGGGGCTCTGCCCAGACTCGCACAGC
 CTCCACACTCTCAGCTCTCAGACAGTGGCAGACCCCTGAGCGAGGACAGTGGCGTGGATGCCGGGGAG
 ACGGAGGCCAGCACCTCAGGCCGAGGCAGACAGCAGCATCCGCTAAGAACAAGAATGGCAAGGAGCAGC
 CCCGACGGAGAGGACCGCGGAGGGTGCCAACAACCTCCCGCCTGCTGGAGCCAACGTCCACCCTGGT
 CCGTGTGAGGAAAAGTGCAGCCACACTGGGCATCGCCATTGAGGGCGGTGCCAACACAGCCAGCCTCTG
 CCCAGGATCGTCACAATTCAGCGAGGAGTTCTGCCATAACTGTGGACAGCTCAAGGTGGGCCACGTAA
 TTCTGGAAGTGAATGGGCAGACACTTCGGGTAAGGAGACAAGGAGGCCCCCAATCATCGCTGAGGC
 CTTCAAGACCAAGGAGAGAGACTACATCGACTTCTGGTCACTGAGTTCAACGTGATGCTC

AGCGGACCGACGCGTACGCGGCCGCTCGAG - GFP Tag - GTTTAA

Protein Sequence: >MG224050 representing NM_001008793
 Red=Cloning site Green=Tags(s)

MNAQLDGLSVSSSTGSLGSAAAAGGGGGAGLRLLSANVRQLHQALTALLSEPEREQFTHCLNAYHARR
 NVFDLVRTLRVLLDSPVKRRLPLMLRVLIPRSDQLLFDQYAEGLYLPATTPYRQPAAWAPDGAGPGEVR
 LVSLRRAKAHEGLGFSIRGGSEHGVIYVSLVEPGSLAEKEGLRVGDQILRVNDKSLARVTHAEAVKALK
 GSKKLVLVSVSAGRIPGGYVTNHIYTWVDPQGRSTSPSSLPQPHGSTLRQREDDRRSTLHLLQSGDEKK
 VNLVLGDGRSLGLTIRGGAIEYGLGIYITGVDPGSEAESSGLKVGQDILEVNGRSFLNILHDEAVKLLKSS
 RHLILTVDVGRPLPHARTTVDQTKWIASRIGESVANSAGFPGDHTEEGTSPKGFYKGPAGSQVTLSSLG
 NQTRALLDDQARHLLTEQERATMMYYLAQYRGGTISVEAMVMALFELLNTHAKFSLLESEVRSIISPQDL
 RFDHLVLRREIESMKARQPPGPGVGDYSMSYSDTGSSTGSHGTSTTVSSARNTLDLEGTGETTQGSTN
 ALPDVSVDDVKSPSEDLPGIKPPPPPPPLAQGHDRLLGQPRKPGREDPAPLSSAAHSGIVFSAPRNRSP
 PGTAPTGPSSAQDSSPIYASISHANPSSRKPLDTHLALVNQHPIGPFPRVQSPPHLKSPPAETPGAG
 ACLPPSPSEHPDAVGANQHFVLEVHRPDSDPVNEVRALPQTRTASTLSQLSDSGQTLSEDSGV DAGE
 TEASTSGRGRQTASAKNKGKEQPRTERTAEGANKPPGLEPTSTLVRVRKSAATLGIAIEGGANTRQPL
 PRIVTIQRGGSANCGQLKVGHVILEVNGQTLRGKEHKEAAQIIAEAFKTKERDYIDFLVTEFNVML

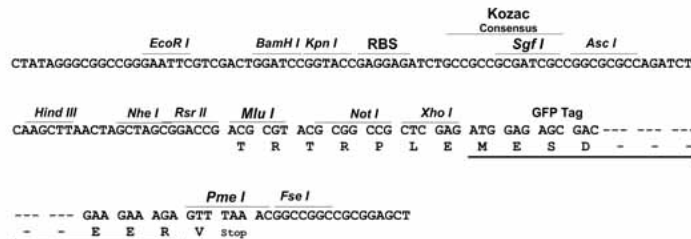
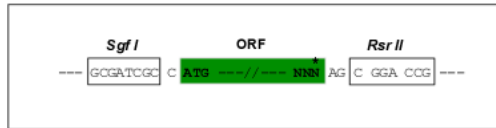
SGPTRRRLRLE - GFP Tag - V

Restriction Sites:

SgfI-RsrII

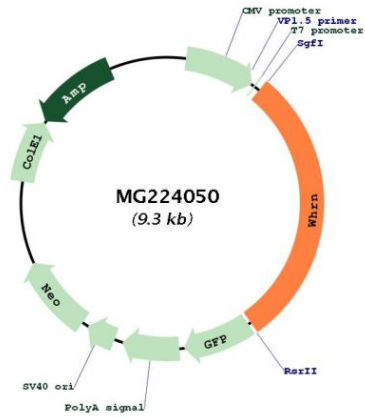
Cloning Scheme:

Cloning sites used for ORF Shuttling:



| | |
|-------------------------------|---|
| ACCN: | NM_001008793 |
| ORF Size: | 2718 bp |
| OTI Disclaimer: | The molecular sequence of this clone aligns with the gene accession number as a point of reference only. However, individual transcript sequences of the same gene can differ through naturally occurring variations (e.g. polymorphisms), each with its own valid existence. This clone is substantially in agreement with the reference, but a complete review of all prevailing variants is recommended prior to use. More info |
| OTI Annotation: | This clone was engineered to express the complete ORF with an expression tag. Expression varies depending on the nature of the gene. |
| Components: | The ORF clone is ion-exchange column purified and shipped in a 2D barcoded Matrix tube containing 10ug of transfection-ready, dried plasmid DNA (reconstitute with 100 ul of water). |
| Reconstitution Method: | <ol style="list-style-type: none">1. Centrifuge at 5,000xg for 5min.2. Carefully open the tube and add 100ul of sterile water to dissolve the DNA.3. Close the tube and incubate for 10 minutes at room temperature.4. Briefly vortex the tube and then do a quick spin (less than 5000xg) to concentrate the liquid at the bottom.5. Store the suspended plasmid at -20°C. The DNA is stable for at least one year from date of shipping when stored at -20°C. |
| RefSeq: | NM_001008793.1 , NP_001008793.1 |
| RefSeq Size: | 4053 bp |
| RefSeq ORF: | 2721 bp |
| Locus ID: | 73750 |
| UniProt ID: | Q80VW5 |
| Cytogenetics: | 4 33.97 cM |
| Gene Summary: | This gene encodes a protein required for elongation and actin polymerization in the hair cell stereocilia. The encoded protein is localized to the cytoplasm and co-localizes with the growing end of actin filaments. Mutations in this gene have been linked to deafness. Alternative splicing results in multiple transcript variants. [provided by RefSeq, Feb 2013] |

Product images:



Circular map for MG224050