

## Product datasheet for **MG224019**

### **Mfsd8 (NM\_028140) Mouse Tagged ORF Clone**

#### **Product data:**

Product Type:	Expression Plasmids
Product Name:	Mfsd8 (NM_028140) Mouse Tagged ORF Clone
Tag:	TurboGFP
Symbol:	Mfsd8
Synonyms:	2810423E13Rik; AI836898; AV142426; Cln7
Mammalian Cell Selection:	Neomycin
Vector:	pCMV6-AC-GFP (PS100010)
E. coli Selection:	Ampicillin (100 ug/mL)



[View online »](#)

**ORF Nucleotide Sequence:**

>MG224019 representing NM\_028140  
 Red=Cloning site Blue=ORF Green=Tags(s)

TTTTGTAATACGACTCACTATAGGGCGGCCGGGAATTCGTCGACTGGATCCGGTACCGAGGAGATCTGCC  
 GCC**CGCATCGCC**

ATGGCGAACCTGGGAAGTGAGGCCGAGCGGGAGCCCTCTTGGGCCCGGATCACCCGGAAGCAGAGAAT  
 GGAGCGAGATAGAAACCAAGAGCATTACAAGAGTAGATGGAAGTCTGTGAGGATTCTCTACCTTACCAT  
 GTTCTCAGCAGTGTGGGTTTTCTATTGTGATAATGTCCATCTGGCCATATCTTCAAAAGATTGATCAG  
 ACAGCTGATGCAAGTTTTTTGGGCTGGGTATTGCTTCATATAGTCTTGGCCAAATGGTAGCTTCACCTC  
 TATTTGGCTTATGGTCTAATTATAGGCCGAGAAAAAGAACCTCTTATCGTCTCCATCTCTATTTCCGGTGGC  
 AGCCAACCTGCCTATATGCGTATGTCCACGTGCCAGCTGCTCATAATAAATACTACATGTTGATTGCTCGT  
 GGATTGGTGGGATTTGGAGCAGGAAATGTTGCCGTTGCCGATCATACTTGGTGGTCTACTTCCCTTC  
 AGGAAAGAACAATGCCATGGCTAATACAAGCACATGCCAAGCCCTGGGCTTTATCTCGTCCAGTTTTT  
 TCAGACTTGCCTTGCCTCATTGGAGAAAAAGGTGTGACGTGGGACATCATCAAGCTGCAGGTCAACATG  
 TACACAGCACCAGTTTTACTTGCAGCCTTCTGGGAATCTAAACATTATTCTGATTCTTTTTATATTAA  
 GAGAGCATCGTGTGGATGACTTGGGACGTCAAGTGAAGAGTGTGAATTTCAAGAAGAAAATACAGATGA  
 ACCTCAGATTCCTGAAGGAAGTATTGATCAAGTTGCTGTTGTGGCTACCAATATTGTGTTTTTTGTGGTT  
 TATTTTATCTTTGCTGTTTATGAAACAATCCTCACCCCACTAACCTGGATATGTACGCCTGGACCCAGG  
 AGCAGGCTGTGCTCTATGATGGAATCCTCCTTGTGCTTTTGGAGTTGAGGCAGTTCTTGTCTTCATGGG  
 GGTTAAATTACTTTCAAAAAGATTGGCGAGCGTGCTATTCTCCTGGGAGGATTTGTGGTTGTATGGGTC  
 GGCTTCTTTATCTTGTACCTGGGAAATCAGTTTCCAAAATACAGTGGGAAGATTTACACAACAGCT  
 CAACCCTAATACTACATTTGGGAAATAATTATTGGTCTTTGGAATCTTCAAGAGAAGATCAGATGA  
 ACAGCCAACCTGGGTGCCAATTGAACAGACCTGGTGCCTGTACACCCAGTGATTCTGGCCAGTTTC  
 CTGACAGCTGCTGTGTTAATTGGAACAGGCTATCCAGCCTGCAGTGTGATGCTCCTATACATTATACTCAA  
 AAGTTCTAGGACCCAAACCTCAGGGTATATACATGGGCTGGTTAACCCTTCTGGAAGTGCAGCAGCGGAT  
 TCTTGGGCTGTGTTTATCAGCCATGTGTACACTACTTGGGCCACGATGGGCATTAGCCTTGTGTGT  
 GGAATAGTAGTGTCCATCTTGTCTAATAGGAGCTGTTACAAAAGACTCGTTGCCTTTCTGTCAGAT  
 ATATGAGGATCCAGGAG

**ACGCGTACGCGGCCGCTCGAG - GFP Tag - GTTTAA**

**Protein Sequence:**

>MG224019 representing NM\_028140  
 Red=Cloning site Green=Tags(s)

MANLGSEAEREPLLGPSPGSREWESEIETQEHYKSRWKSVRILYLTMFLSSVGFIVIMSIWPYLQKIDQ  
 TADASFLGWVIASYSLGQMVASPLFGLWSNYRPRKEPLIVSISISVAANCLYAYVHVPAAHNKYYMLIAR  
 GLVGFAGNVAVRSYIAGATSLQERTNAMANTSTCQALGFILGPVFQTCFALIGEKGVTWDI IKLQVNM  
 YTAPVLLAAFLGILNIIILFILREHRVDDLGRQCKSVNFQEENTDEPQIPEGSIDQVAVVATNIVFFVV  
 LFI FAVYETILTPLTLDMYAWTQEQAVLYDGILLVAFGVEAVLVFMGVKLLSKKIGERAILLGGFVVVWV  
 GFFILLPWGNQFPKIQWEDLHNSSTPNTTFGEIIIGLWNSREDHSEQPTGCPIEQTWCLYTPVIHLAQF  
 LTAAVLIGTGYPACSVMSYTLYSKVLGPKPQGIYMGWLTTSGSAARILGPVFI SHVYTYLGPWFSLVC  
 GIVVLTILLIGAVYKRLVAFSVRYMRIQE

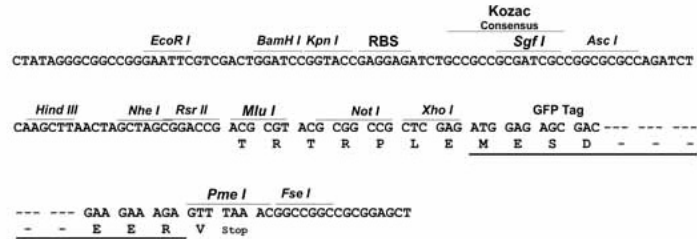
**TRTRPLE - GFP Tag - V**

**Restriction Sites:**

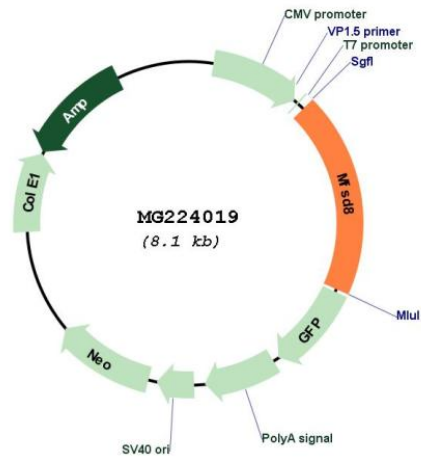
Sgfl-MluI

Cloning Scheme:

Cloning sites used for ORF Shutting:



Plasmid Map:



<b>ACCN:</b>	NM_028140
<b>ORF Size:</b>	1557 bp
<b>OTI Disclaimer:</b>	The molecular sequence of this clone aligns with the gene accession number as a point of reference only. However, individual transcript sequences of the same gene can differ through naturally occurring variations (e.g. polymorphisms), each with its own valid existence. This clone is substantially in agreement with the reference, but a complete review of all prevailing variants is recommended prior to use. <a href="#">More info</a>
<b>OTI Annotation:</b>	This clone was engineered to express the complete ORF with an expression tag. Expression varies depending on the nature of the gene.
<b>Components:</b>	The ORF clone is ion-exchange column purified and shipped in a 2D barcoded Matrix tube containing 10ug of transfection-ready, dried plasmid DNA (reconstitute with 100 ul of water).
<b>Reconstitution Method:</b>	<ol style="list-style-type: none"><li>1. Centrifuge at 5,000xg for 5min.</li><li>2. Carefully open the tube and add 100ul of sterile water to dissolve the DNA.</li><li>3. Close the tube and incubate for 10 minutes at room temperature.</li><li>4. Briefly vortex the tube and then do a quick spin (less than 5000xg) to concentrate the liquid at the bottom.</li><li>5. Store the suspended plasmid at -20°C. The DNA is stable for at least one year from date of shipping when stored at -20°C.</li></ol>
<b>RefSeq:</b>	<a href="#">NM_028140.5</a>
<b>RefSeq Size:</b>	3051 bp
<b>RefSeq ORF:</b>	1560 bp
<b>Locus ID:</b>	72175
<b>UniProt ID:</b>	<a href="#">Q8BH31</a>
<b>Cytogenetics:</b>	3 B
<b>Gene Summary:</b>	May be a carrier that transport small solutes by using chemiosmotic ion gradients. [UniProtKB/Swiss-Prot Function]