

Product datasheet for **MG223997**

Prepl (NM_001163623) Mouse Tagged ORF Clone

Product data:

Product Type:	Expression Plasmids
Product Name:	Prepl (NM_001163623) Mouse Tagged ORF Clone
Tag:	TurboGFP
Symbol:	Prepl
Synonyms:	2810457N15Rik; 9530014L06Rik; D030028O16Rik; mKIAA0436
Mammalian Cell Selection:	Neomycin
Vector:	pCMV6-AC-GFP (PS100010)
E. coli Selection:	Ampicillin (100 ug/mL)



[View online »](#)

ORF Nucleotide Sequence:

>MG223997 representing NM_001163623
 Red=Cloning site Blue=ORF Green=Tags(s)

TTTTGTAATACGACTCACTATAGGGCGGCCGGAATTCGTCGACTGGATCCGGTACCGAGGAGATCTGCC
 GCCCGCATCGCC

ATGGATGCATTTGAAAAAGTGAGAACAAGACTGGAACACAGCCACAGGAAGAGTACGAAGTCGTCATG
 CAGAGATTAACATGGCGCTTTGTTTATTATCAAGAAGTTGCTGCTTGGTTTCGTTCCAAAGACGAAGA
 AGCTGACAGTGATAATTATGAAGTTTTATTCAACCTGGAAGAAGTTAAATTGGATCAGCCTTTCATTGAT
 TGCATCAGAGTTGCTCCTGATGAGAAATACGTGGCTGCCAAGATAAGGACGGAGGATTCTGAAACCTCCA
 CCTTAGTAGTTGTGAAGCTCAGTGACCAGCCTGTAATGGAAGCGTCGTTCCCAAACGTGTCCAGTTTCGA
 ATGGGTGAAGGATGAAGAAGATGAAGATGTCTTATTCTACACCTCCAAAGAACCTTCGCTGCCACGAT
 GTGTATCGAGCCACATTTGGTGACAACAAGCGCAATGAACGGTTCTACACAGAGAAAGACCCAAGCTATT
 TTGTCTTCTCTACCTTACAAAAGACAGTCGTTTCTCAGCTGAATATTATGAACAAGACGACTCCGA
 GGTGTGGTTGATAGATGGCTGAGCCCGTGGGACCCACAGTCTTATTGAGAAGAGGATACACGGAAATG
 CTTTACTATGTTGAGCATCGAGATGATGAGTTATACATCCTGACGAATGTTGGAGAACCTACAGAATTCA
 AGCTGATGCGGACGGCAGCTGATGCCCCGCTATTATGAATTGGGATTTATTTTTCAAAATGAAGAGAAA
 TACCAAGTTGTAGACTTGGACATGTTTAAAGACCACTGTGTTCTGTTCCGAAACACAGCAATCTCCTC
 TATGTTAATGTGATTGGTCTGGCCGACGACTCAGTGCGCTCCCTAAAGCTCCCGCCTTGGGCTGTGGAT
 TCATAATGGATACAAATCTGACCCAAAGAACTGCCCCCTTTCAGCTTTGCTCTCCAATAAGACCCCCAAA
 ATATTACATACAAATTTGAGAAGGCAAACTGTTTGGAGAACTGGTCACGAAGATCCGATTACAAAG
 ACCAGCCGTGTTTACGCATAGAAGCCAAAAGCAAGGATGGAAGTTAGTGCCCATGACAGTTTTTCACA
 AAACCGATTCTGAGGACCTGCAGAGGAAGCCTCTCTGGTGCACGTCTATGGAGCGTACGGAATGGACCT
 GAAAATGAATTTACGGCCTGAAAAGCGGGTCTTGGTGGATGATGGATGGATCTTAGCTTATTGCCATGTT
 AGGGGTGGTGGCAGCTAGGTCTCCAGTGGCATGCCGATGGCCGACTAACTAAAAAGCTCAATGGCCTTG
 CTGACTTAGTGGCTTGCAATTAAGACGCTTACAGCCAGGGCTTTTCTCAGCCGAGCCTAACAAACGCTGAG
 CGCTTTCAGTGTGGAGGTGTGCTCGTGGGAGCACTGTGTAATTCTAAGCCAGAGCTCCTGAGAGCCGTG
 ACCCTGGAGGCACCTTCTTGGATGTCCTCAATACCATGTTGGATACCACCCTTCTCTGACACTGGAAG
 AGTTGGAAGAGTGGGGAAACCCGTCATCTGATGAGAAACACAAGAACTACATAAAGCGCTACTGTCCCTG
 CCAGAACATTAAGCCTCAGCATTATCCTTCAGTTCACATCACAGCCTATGAAAACGATGAGCGAGTGCCG
 CTGAAAGGAATCGTGAACACACAGAGAAGCTTAAAGAGGCCGTGGCTGAGCACACCAAGGGAGCGGGTG
 AAGGCTATCAGCCCCAACATTATCCTAGATATTCAGCCTGGGGGGAACACGATGATTAGGATTCTCA
 CAAAAAGATCACAAACCCAGATGAAATTCCTATATGAGGAAGTGGACTTGACAGCACTGATGCTTTCGAG
 GCGCTGAAGAAATACCTAAAGTTC

ACGCGTACGCGGCCGCTCGAG – GFP Tag – GTTTAA

Protein Sequence:

>MG223997 representing NM_001163623
 Red=Cloning site Green=Tags(s)

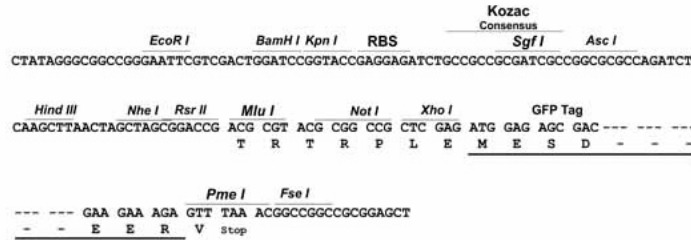
MDAFEKVRTRLETQPQEEYEVVNAEIKHGGFVYYQEGCCLVRSKDEEADSDNYEVLFNLEELKLDQPFID
 CIRVAPDEKYVAAKIRTEDSETLTVVVKLSDQPVMEASFVNVSSFEWVKDEEDEDVLFYTFQRNLRCHD
 VYRATFGDNKRNERFYTEKDPSYFVFLYLTKDSRFLTLNIMNKTSEVWLDGLSPWDPPVLIQKRIHGM
 LYYVEHRDDELYILTNVGEPTFKLMRTAADAPAIMNWDLFFTMKRNTKVVDLDMFKDHCVLFLKHSNLL
 YNVNIGLADDSVRSCLKLPWACGFIMDTNSDPKNCPFLCSPIRPPKYTYKFAEGKLFEEETGHEDPITK
 TSRVLRIEAKSKDGKLVPMTVFHKTDSEDLQRKPLLHVYVYVYGMCLKMNFREKRVLVDDGWILAYCHV
 RGGGELGLQWHADGRLTKKLNGLADLVACIKTLHSQGSQPSLTTLFAFSAGGVLVGLCNSKPELLRAV
 TLEAPFLDVLNTMLDITLPLTLEEEWGNPSSDEKHKNYIKRYCPCQNIKQHYPSVHITAYENDERVP
 LKGIIVNYTEKLKEAVAETHKGAGEGYQPPNIILDIQPGGNHVIEDSHKITTQMKFLYEELGLDSTDAFE
 ALKKYLKF

TRTRPLE – GFP Tag – V

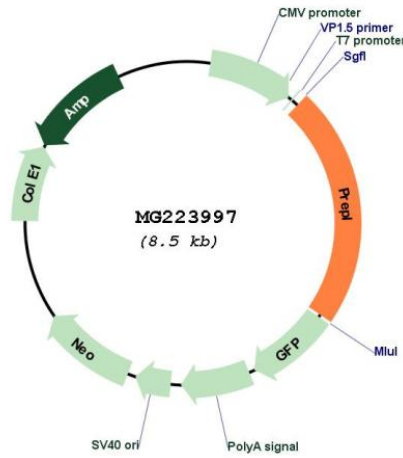
Restriction Sites: SgfI-MluI

Cloning Scheme:

Cloning sites used for ORF Shutting:



Plasmid Map:



ACCN: NM_001163623

ORF Size: 1914 bp

OTI Disclaimer:	The molecular sequence of this clone aligns with the gene accession number as a point of reference only. However, individual transcript sequences of the same gene can differ through naturally occurring variations (e.g. polymorphisms), each with its own valid existence. This clone is substantially in agreement with the reference, but a complete review of all prevailing variants is recommended prior to use. More info
OTI Annotation:	This clone was engineered to express the complete ORF with an expression tag. Expression varies depending on the nature of the gene.
Components:	The ORF clone is ion-exchange column purified and shipped in a 2D barcoded Matrix tube containing 10ug of transfection-ready, dried plasmid DNA (reconstitute with 100 ul of water).
Reconstitution Method:	<ol style="list-style-type: none">1. Centrifuge at 5,000xg for 5min.2. Carefully open the tube and add 100ul of sterile water to dissolve the DNA.3. Close the tube and incubate for 10 minutes at room temperature.4. Briefly vortex the tube and then do a quick spin (less than 5000xg) to concentrate the liquid at the bottom.5. Store the suspended plasmid at -20°C. The DNA is stable for at least one year from date of shipping when stored at -20°C.
RefSeq:	NM_001163623.1 , NP_001157095.1
RefSeq Size:	3294 bp
RefSeq ORF:	1917 bp
Locus ID:	213760
UniProt ID:	Q8C167
Cytogenetics:	17 E4
Gene Summary:	Probable serine peptidase whose precise substrate specificity remains unclear. Does not cleave peptides after a arginine or lysine residue. May play a role in the regulation of synaptic vesicle exocytosis.[UniProtKB/Swiss-Prot Function]