

Product datasheet for **MG223966**

Lpp (NM_001145952) Mouse Tagged ORF Clone

Product data:

Product Type:	Expression Plasmids
Product Name:	Lpp (NM_001145952) Mouse Tagged ORF Clone
Tag:	TurboGFP
Symbol:	Lpp
Synonyms:	9430020K16Rik; AA959454; AU024130; B130055L10Rik; C79715; D630048H16
Mammalian Cell Selection:	Neomycin
Vector:	pCMV6-AC-GFP (PS100010)
E. coli Selection:	Ampicillin (100 ug/mL)



[View online »](#)

ORF Nucleotide Sequence:

>MG223966 representing NM_001145952
 Red=Cloning site Blue=ORF Green=Tags(s)

TTTTGTAATACGACTCACTATAGGGCGGCCGGGAATTCGTCGACTGGATCCGGTACCGAGGAGATCTGCC
 GCC**GCGATCGCC**

ATGTCTCACCCATCTTGGCTGCCACCCAAAAGCACTGGTGAAGCCTCTTGGCCACGTGCCTGCACGGATGG
 AGACCACCCATTCTTTGGGAACCCAGTATCTCAGTGTCAACACAACAGCCACCCAAAGAAGTATGCTCC
 AGTTGTTGCTCCGAAACCCAAGTATAACCCATACAAGCAGCCTGGAGGAGAGGGTATCTTCTCCACCCG
 CCACCACCACCTTAGAGGATCCTGGTACCATCCCATCTGGTCCCGGACACTTCCCTCCTCCTCCACCAC
 TGGATGAAGGGGCTTTCAAAGTGCAGCAGGAAATCCTGGAGGCAAGACCCTGGAGGAAAGGCGCTAG
 TCTAGATGCAGAGATCGACTCCTTGACCAGCATCTTGGCTGATTTGGAGTGCAGCTCACCCATAAGCCA
 CGTCCCCACAGGGCTCTGCTAGTTCAATAGCCTCCTCCAGTTTCTACTCCTGTCACAGGACATAAGA
 GAATGGTCATTCCACAGCAGCCACCCCTGACAGCAACCAAGAAGTCCGCAACAAAACCACAGCCTGCACC
 CCAGGCTGCACCCATCCCAGTACTCAATTGGAACACTCAAACCCAGCCTCAGCCAGTCCAGCCTCC
 TATACTACGGCATCCACATCTTCAAGGCCACCTTAAATGTGCAAGTGAAGTCAAGTCCAGCCAGCCAC
 ATTACATGGCTGGTCCATCCTCTGGACAAATATATGGTCCAGGGCCTCGTGGCTATAACAACCAGCCAGT
 TCCTGTATCGGGACAGTGTCTCCTCCTCCAACCTGTGTTGGTACCGACTATGCATATATCCACCATCT
 GGACATCCGCCTGAGTCTGGATATGGGTATACCTCCAACCAAGGACGCTATTATGAACCTTACTATGCAG
 CAGGTCCTAGCTATGGGGCCGAAGTGAAGGTGATACTGCTTATGGGCAACAGGTTCAACCTAATACCTG
 GAAGCGGGAAGCTGCGTATGCCCTCCTGCAAGCGGGAATCAGAACCATCCTGGCATGTATCCAGTCAGT
 GGCCCCAAGAAGACCTATACACAGACCCTGTTTCAGCGCCCTGTGCACCACCCTGCACCCAAAGGGTG
 GATACCCCTGGGCTATGGGGCTCCTTCCATCCCCCATCATCCGCCCAGAAGATGAGCTCGAACACTT
 GACCAAGAAGATGCTGTATGACATGGAGAACCACCCCGCTGACGATTACTTTGGCCGTTGTGCCGCTGT
 GGGGAAAATGTTGTTGGAGAAGGAACAGGATGACTGCCATGGATCAGGCTTCCACGTGGATTGCTTCA
 CCTGCATTGTCTGTGATGTCAAGCTCCGAGGGCAGCCTTTCTATGCCGTGGAGAAGAAGGCATACTGCGA
 GCCCTGTACATTAATACCCTGGAGCAGTGCAGTGTGTGTTGGAAGCCCATGAGGAGGGATCCTCCGT
 GCCACCGGAAGGCTACCACCCCACTGCTTACCTGCGTGTGTGCCACCGTAGCCTGGACGGCATCC
 CATTACTGTGGATGCTTGGGCTCATTCACTGCATTGAGGACTCCACAAGAAATTTGCCCGCGCTG
 TTCTGTGTGCAAGAACCTATCATGCCAGCCCCAGGCCAGGAGACTGTCCGATTGTGGCTCTGGAC
 CGTGATTTCCATGTGCACCGCTATCGCTGTGAGGACTGTGGTGGTCTTCTGTCCGAAGGAGACAACCAAG
 GCTGCTACCCCTTGATGGACACATTCTCTGTAAGACCTGCAACTCGGCTCGCATCAGGGTCTTGACGGC
 CAAGGCAAGCACTGACCTG

ACGCGTACGCGGCCGCTCGAG - GFP Tag - GTTTAA

Protein Sequence:

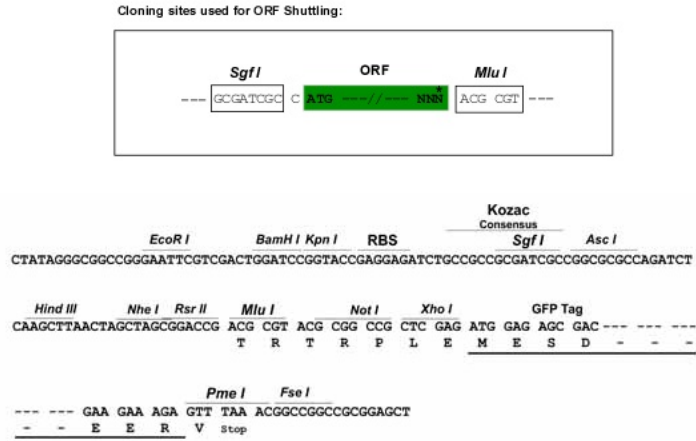
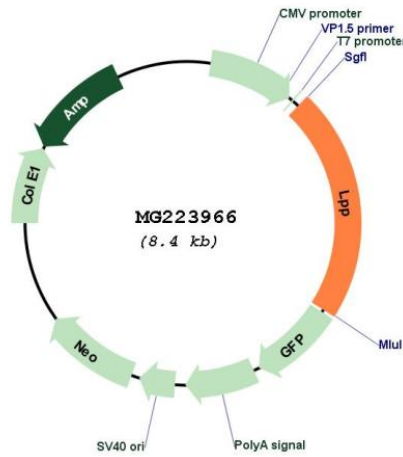
>MG223966 representing NM_001145952
 Red=Cloning site Green=Tags(s)

MSHPSWLPPKSTGEPLGHVPMETTHSFGNPSISVSTQQPPKKYAPVVAPKPKYNPYKQPGEGDLLPP
 PPPPLEDPTIPSGPHFPPPPPLDEGAFKVVQGNPQGGKLEERRSSLD AEIDSLTSILADLECSPYK
 RPPQGSASSIASPPVSTPVTGHKRMVIPQQPLTATKKSATKQPAPQAAPIPVTPIGTLKQPQVPVPS
 YTTASTSSRPTFNVQVKSAPSPHYMAGPSSGQIYGPGRGYNNQVPVSVGQCPPPTCVGTDYAYIPPS
 GHPPESGYTSNQGRYEPYAAAGPSYGRSEGDYAGQVQPNWREAAAYAPPASGNQNHGPMYPVS
 GPKKTYITDPVSAPCAPPLQPKGGYPGMPGPPSIPPSFRPEDELEHLTKKMLYDMENPPADDFYGRCARC
 GENVVGEGTGCTAMDQVHVDFCTIVCDVKLRQPFYAVEKKAYCEPCYINTLEQCSVCSKPIMERILR
 ATGKAYHPCFTCYMCHRSLDGIPTVDACGLIHCIEDFHKKFAPRCSVCKEPIMPAPGQETVRIVALD
 RDFHVHRYRCEDCGGLLSEGDNQGCYPLDGHILCKTCNSARIRVLTAKASTDL

TRTRPLE - GFP Tag - V

Restriction Sites:

Sgfl-MluI

Cloning Scheme:

Plasmid Map:


ACCN: NM_001145952

ORF Size: 1839 bp

OTI Disclaimer:	The molecular sequence of this clone aligns with the gene accession number as a point of reference only. However, individual transcript sequences of the same gene can differ through naturally occurring variations (e.g. polymorphisms), each with its own valid existence. This clone is substantially in agreement with the reference, but a complete review of all prevailing variants is recommended prior to use. More info
OTI Annotation:	This clone was engineered to express the complete ORF with an expression tag. Expression varies depending on the nature of the gene.
Components:	The ORF clone is ion-exchange column purified and shipped in a 2D barcoded Matrix tube containing 10ug of transfection-ready, dried plasmid DNA (reconstitute with 100 ul of water).
Reconstitution Method:	<ol style="list-style-type: none">1. Centrifuge at 5,000xg for 5min.2. Carefully open the tube and add 100ul of sterile water to dissolve the DNA.3. Close the tube and incubate for 10 minutes at room temperature.4. Briefly vortex the tube and then do a quick spin (less than 5000xg) to concentrate the liquid at the bottom.5. Store the suspended plasmid at -20°C. The DNA is stable for at least one year from date of shipping when stored at -20°C.
RefSeq:	NM_001145952.1 , NP_001139424.1
RefSeq Size:	15462 bp
RefSeq ORF:	1842 bp
Locus ID:	210126
UniProt ID:	Q8BFW7
Cytogenetics:	16 B1
Gene Summary:	May play a structural role at sites of cell adhesion in maintaining cell shape and motility. In addition to these structural functions, it may also be implicated in signaling events and activation of gene transcription. May be involved in signal transduction from cell adhesion sites to the nucleus allowing successful integration of signals arising from soluble factors and cell-cell adhesion sites. Also suggested to serve as a scaffold protein upon which distinct protein complexes are assembled in the cytoplasm and in the nucleus (By similarity). [UniProtKB/Swiss-Prot Function]