

Product datasheet for **MG223961**

Gpm6b (NM_001177960) Mouse Tagged ORF Clone

Product data:

Product Type:	Expression Plasmids
Product Name:	Gpm6b (NM_001177960) Mouse Tagged ORF Clone
Tag:	TurboGFP
Symbol:	Gpm6b
Synonyms:	A1593561; Gpm6; M6B
Mammalian Cell Selection:	Neomycin
Vector:	pCMV6-AC-GFP (PS100010)
E. coli Selection:	Ampicillin (100 ug/mL)
ORF Nucleotide Sequence:	>MG223961 representing NM_001177960 Red=Cloning site Blue=ORF Green=Tags(s)

TTTTGTAATACGACTCACTATAGGGCGGCCGGAATTCGTCGACTGGATCCGGTACCGAGGAGATCTGCC
GCC**CGATCGCC**

ATGAAGCCAGCCATGGAACTGCAGCCGAGGAAAATACTGAACAAAGCCAAGAGAGAAAAGGTTGCTTCG
AATGCTGCATCAAGTGTCTGGGAGGAGTTCCTATGCCTCCCTGGTGGCCACCATCCTATGTTTCTCTGG
AGTGGCCTTGTCTGTGGCTGTGGCATGTGGCTCTTGCAGGCACCGTGGCAATTCCTGAGCAACACTTC
TCCACCAACACCAGTGACCATGCCTTGCTGAGTGAAGTGATCCAAGTATGCAGTATGTTATCTATGGAA
TCGCCTCCTTTTCTTCTGTATGGCATATTCTCTGGCAGAAGGCTTCTACACCACAAGTGCAGTGAA
AGAGCTGCACGGTGAATTTAAAACAACCTGCCTGTGGCCGATGCATCAGTGAATGTTTCGTGTTCCCTACC
TATGTGCTGGGAGTGGCCTGGCTGGGTGTTCGGCTTTTCCGCAGTGCCAGTGTATGTTCTACAACA
TCTGGTCAACCTGTGAAGTCATCAAGTCCCCACAAGCAACGGGACCTCGGGTGTGGAGCAGATCTGTGT
GGATGTCCGGCAATATGGTATCATTCTTGGAAATGCTTTCCAGGCAAAATCTGTGGCTCGGCCTTGGAG
AACATCTGCAACACGAATGAGTTCTACATGTCCTATCACCTGTTTCATTGTGGCTTGTGCTGGAGCTGGT
CCACCGTCATTGCCCTGCTGATCTACATGATGGCTACTACATATAACTATGCGGTTTTGAAGTTAAGAG
TCGGGAAGACTGCTGCACTAAGTTC

ACGCGTACGCGGCCGCTCGAG - GFP Tag - GTTTAA



[View online »](#)

Protein Sequence: >MG223961 representing NM_001177960
 Red=Cloning site Green=Tags(s)

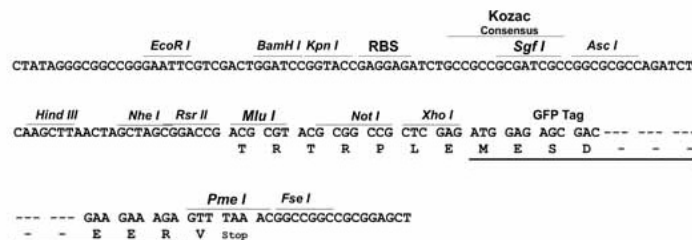
MKPAMETAAEENTEQSQRKGCFECCIKCLGGVPYASLVATILCFSGVALFCGCGHVALAGTVAILEQHF
 STNTSDHALLSEVIQLMQYVIYGIASFFFLYGIILLAEGFYTTSAVKELHGEFKTTACGRCSGMFVFLT
 YVLGVAWLGVFGFSAVPVFMFYNIWSTCEVIKSPQSNGTSGVEQICVDVRQYGIIPWNAFPGKICGSALE
 NICNTNEFYMSYHLFIVACAGAGATVIALLIYMMATTYNYAVLKFKSREDCCTKF

TRTRPLE - GFP Tag - V

Restriction Sites: SgfI-MluI

Cloning Scheme:

Cloning sites used for ORF Shutting:



ACCN: NM_001177960

ORF Size: 795 bp

OTI Disclaimer: The molecular sequence of this clone aligns with the gene accession number as a point of reference only. However, individual transcript sequences of the same gene can differ through naturally occurring variations (e.g. polymorphisms), each with its own valid existence. This clone is substantially in agreement with the reference, but a complete review of all prevailing variants is recommended prior to use. [More info](#)

OTI Annotation: This clone was engineered to express the complete ORF with an expression tag. Expression varies depending on the nature of the gene.

Components: The ORF clone is ion-exchange column purified and shipped in a 2D barcoded Matrix tube containing 10ug of transfection-ready, dried plasmid DNA (reconstitute with 100 ul of water).

Reconstitution Method:

1. Centrifuge at 5,000xg for 5min.
2. Carefully open the tube and add 100ul of sterile water to dissolve the DNA.
3. Close the tube and incubate for 10 minutes at room temperature.
4. Briefly vortex the tube and then do a quick spin (less than 5000xg) to concentrate the liquid at the bottom.
5. Store the suspended plasmid at -20°C. The DNA is stable for at least one year from date of shipping when stored at -20°C.

RefSeq: [NM_001177960.1](#), [NP_001171431.1](#)

RefSeq Size: 3358 bp

RefSeq ORF: 798 bp

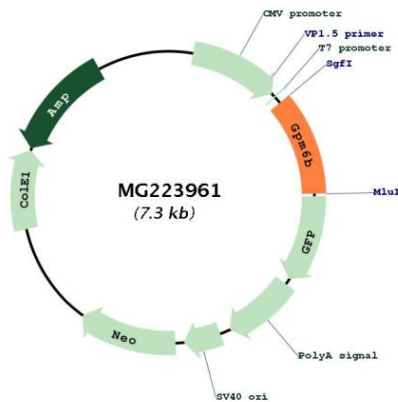
Locus ID: 14758

UniProt ID: [P35803](#)

Cytogenetics: X F5

Gene Summary: May be involved in neural development. Involved in regulation of osteoblast function and bone formation. Involved in matrix vesicle release by osteoblasts; this function seems to involve maintenance of the actin cytoskeleton. May be involved in cellular trafficking of SERT and thereby in regulation of serotonin uptake.[UniProtKB/Swiss-Prot Function]

Product images:



Circular map for MG223961