

Product datasheet for **MG223947**

Foxn2 (NM_180974) Mouse Tagged ORF Clone

Product data:

Product Type:	Expression Plasmids
Product Name:	Foxn2 (NM_180974) Mouse Tagged ORF Clone
Tag:	TurboGFP
Symbol:	Foxn2
Synonyms:	3230402J05Rik; 6030465J18Rik; Fkh19; Foxn1; HTLF
Mammalian Cell Selection:	Neomycin
Vector:	pCMV6-AC-GFP (PS100010)
E. coli Selection:	Ampicillin (100 ug/mL)
ORF Nucleotide Sequence:	>MG223947 representing NM_180974 Red=Cloning site Blue=ORF Green=Tags(s)

TTTTGTAATACGACTCACTATAGGGCGGCCGGAATTCGTCGACTGGATCCGGTACCGAGGAGATCTGCC
GCC**CGATCGCC**

ATGGGTCCAGTAATTGGAATGACTCCAGATAAGAGAGCTGAGACCCGGGAGCTGAGAAGGTTGCAGGAC
TGAGTCAGATTTACAAAATGGGAAGTTTGCTGAAGCTGGGGATGCTGCCAGGCCAAAGGCCACTTTGT
GGGCAGTGAGTCAGCAGATGACGAGCTAACAACTTGAAGTGGCTTCATGAGAGCAGTAACCTTCTAACA
AACCTCAGACTTGAAGTGAAGGCCTTCCCATGGTCAGTCGGCTGTATGACATAGAGGGAGATGAGATGC
CATCCTTTGGACCATCGTGCTACCAGAACCAGAAAAAATCAGCAACTCAAAGCCCCGTACTCCTT
TAGTCTTCTCATTATATGGCTATTGAACACTCGCCAAATAAATGTTTGCCTGTCAAAGAAATTTACAGC
TGGATTCTGGATCGCTTCCCATACTTTGCCACTGCACCTACAGGCTGGAAGAATTCGTTCGGCATAATC
TATCCCTGAATAAATGTTTTAGAAAAGTGGAAAGAAGTCATGGCAAGGTTAATGGAAAAGGCTCCTTGTG
GTGCGTTGATCCAGAATAAAGCCCAATCTTATGCAGGCCTTAAAGAAGCAGCCTTTTTCTTCTCCACAA
AGTGCTGCTTTATCACCTCACTGCTTAAGCTCTGCTCTCAAGCAAAGCCAAGTGCAAACTCTCAAGAAT
CTGACATTGATGCAGCCACTGCAATGATACTTTAAATACTTCAATAGAACAAGAGATTTTGAATGTGA
GAAGCCACTGCCTCTTAAACATCACTGCAGAAGAAGAGGAGTTACGGCAGCGCGTTCAAGTGCCTCCGCT
GCTGTGGCAGTGCAGGAGAGCCCGTCTCAACCAGCCGATCGACCCAAAGCCGACCACTAACTACAGTG
CCAACAGCGTGGCGGCCAGCGCTGCGCATCCAGGGCGAGCATGTCTTCTCTGTCTCTGTGGATGAGGT
GTATGAATTCATCCCAAAGAGCAGCCACGGCGGGAGCGACGGTAGCGAAGGCTTCCACAGCGACGAGGAG
ACGGATGCGGAGGACGAGGAGGATCCTCTGGGAGACAGTGGCTACGCACCAGCTCGTGGACACAGTA
CTCTGAAAGGGCAGCCAGGCAAAAAGATCCCAAAACAGTCTGTCAAAGAGATTGATGAGGAGCTCAAAGA
GGCAGCCGGTCTGCTCCACCTTGTGGAATCCGCACCTGCCTTGGTTCCTGATAAGTACTGCGAAG
GCACAGAGTCAGAAGCACCGGAAAAAG

ACGCGTACGCGGCCGCTCGAG - GFP Tag - GTTTAA



[View online »](#)

Protein Sequence: >MG223947 representing NM_180974
 Red=Cloning site Green=Tags(s)

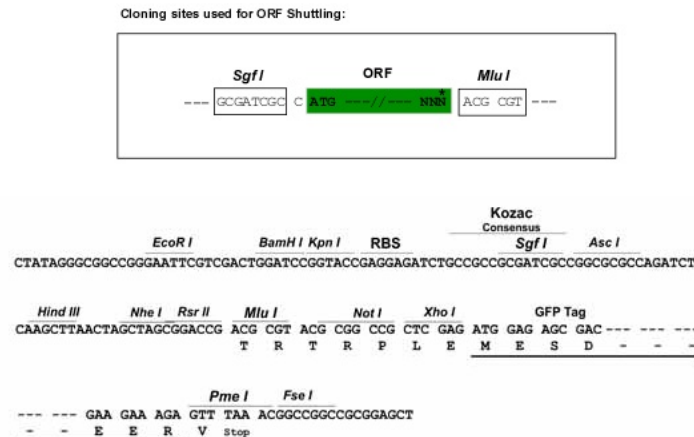
MGPVIGMTPDKRAETPGAIEKVAGLSQIYKMGSLPEAGDAARPKATLVGSESADELTLNWLHESNLLT
 NLRLGSEGLPMVSPLYDIEGDEMPSPFGPCYQNPKEKKSATSKPPYSFLLIYMAIEHSPNKCLPVKEIYS
 WILDRFPYFATPTGWKNSVRHNLNLNCFQKVERSHGKVNKGSLWCVDPEYKPNLMQALKKQPFSSPQ
 SAALSPHCLSSALKQSQVQTLQESDIDAATAMILLNTSIEQEILECEKPLPLKTSLQKKRSYGSFASAPG
 AVRLQESPSPTAGIDPKADHNSANSVAAQRCASRAMSSLSVDEVYEFIPKSSHGGSDGSEGFHSDEE
 TDAEDEDPLGDSGYAPQARGHSTLKGQPGKKIPKQSCQEIDEELKEAAGSLLHLAGIRTCGLSLISTAK
 AQSQKHREK

TRTRPLE - GFP Tag - V

Restriction Sites:

SgfI-MluI

Cloning Scheme:



ACCN: NM_180974

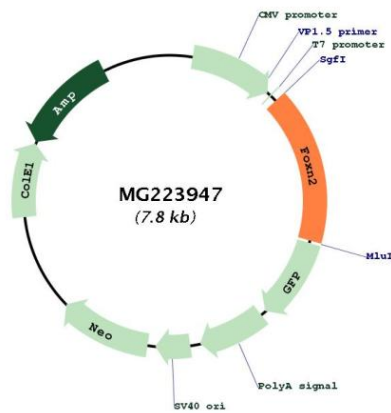
ORF Size: 1287 bp

OTI Disclaimer: Due to the inherent nature of this plasmid, standard methods to replicate additional amounts of DNA in E. coli are highly likely to result in mutations and/or rearrangements. Therefore, OriGene does not guarantee the capability to replicate this plasmid DNA. Additional amounts of DNA can be purchased from OriGene with batch-specific, full-sequence verification at a reduced cost. Please contact our customer care team at custsupport@origene.com or by calling 301.340.3188 option 3 for pricing and delivery.

The molecular sequence of this clone aligns with the gene accession number as a point of reference only. However, individual transcript sequences of the same gene can differ through naturally occurring variations (e.g. polymorphisms), each with its own valid existence. This clone is substantially in agreement with the reference, but a complete review of all prevailing variants is recommended prior to use. [More info](#)

- OTI Annotation:** This clone was engineered to express the complete ORF with an expression tag. Expression varies depending on the nature of the gene.
- Components:** The ORF clone is ion-exchange column purified and shipped in a 2D barcoded Matrix tube containing 10ug of transfection-ready, dried plasmid DNA (reconstitute with 100 ul of water).
- Reconstitution Method:**
1. Centrifuge at 5,000xg for 5min.
 2. Carefully open the tube and add 100ul of sterile water to dissolve the DNA.
 3. Close the tube and incubate for 10 minutes at room temperature.
 4. Briefly vortex the tube and then do a quick spin (less than 5000xg) to concentrate the liquid at the bottom.
 5. Store the suspended plasmid at -20°C. The DNA is stable for at least one year from date of shipping when stored at -20°C.
- RefSeq:** [NM_180974.5](#)
- RefSeq Size:** 5101 bp
- RefSeq ORF:** 1290 bp
- Locus ID:** 14236
- Cytogenetics:** 17 E4

Product images:



Circular map for MG223947