

Product datasheet for **MG223933**

Abcc9 (NM_001044720) Mouse Tagged ORF Clone

Product data:

Product Type:	Expression Plasmids
Product Name:	Abcc9 (NM_001044720) Mouse Tagged ORF Clone
Tag:	TurboGFP
Symbol:	Abcc9
Synonyms:	AI414027; AI449286; SU; SUR; Sur2; SUR2A; SUR2B
Mammalian Cell Selection:	Neomycin
Vector:	pCMV6-AC-GFP (PS100010)
E. coli Selection:	Ampicillin (100 ug/mL)
ORF Nucleotide Sequence:	>MG223933 representing NM_001044720 Red=Cloning site Blue=ORF Green=Tags(s)

TTTTGTAATACGACTCACTATAGGGCGGCCGGAATTCGTCGACTGGATCCGGTACCGAGGAGATCTGCC
GCC**CGATCGCC**

ATGAGCCTTTCTTTTGTGGGAACAACATCTCCTCCTACAACATCTATTATGGTGTCTCCAAAACCCCT
GCTTTGTGGACGCACTCAACCTGGTCCCACATGTCTTCTGCTGTTTATCACCTTTCCAATACTGTTTCAT
TGGATGGGGGAGCCAAAGCTCAAAGTCAAAATTCATCATAACACGTGGCTTCATTTTCCGGACACAAC
CTGAGATGGATTCTGACGTTTGGCTCCTGTTTGTGCATGTTTGTGAGATAGCGGAAGGCATCGTTTCAG
ACTCGCATCGGGGTCCAGGCATCTCCACCTTTTCATGCCGGCTGTGATGGGATTTGTCGCCACAACAAC
GTCCATCGTCTATTATCATAACATTGAAACATCAAATTTCCCTAAATTACTTTTAGCTTTATTCTGTAC
TGGGTAATGGCCTTTATTACAAAGACGATAAAAGTTGGTCAAATACTGGCAGTTGGGGTGGGAGTGTGAG
ACCTGCGCTTCTGCATCAGAGGATGATGGTCACTTGAATGGGCTGCTGATGGCTGTGGAGATCAATGT
CATCCGGGTCAGAAGATATGTTTCTTCATGAATCCCCAGAAAGTGAAGCCTCCGGAAGACCTCCAGGAC
CTGGGCGTGAGGTTCTCCAGCCATTTGTGAATTTACTGTCCAAAGCTACTTACTGGTGGATGAACACAC
TTATCATATCAGCTCACAGGAAACCTATCGATCTGAAGCGATTGGAAAGTTGCCGATAGCGATGAGGGC
GGTGACCAATTATGTCTGCCTAAAGGAAGCCTATGAAGAGCAGAAGAAAAAGGCTGCCGATCATCCAAAT
CGGACTCCCTCCATATGGCTGGCCATGTACAGAGCTTTTGGGAGACCAATCCTGCTGAGCAGCACATTCC
GGTACTTGGCTGACTTGCTGGGGTTGCTGGTCTCTTTGTATATCTGGGATAGTCCAGCGAGTAAATGA
AAAGACTAACACAACAAGAGAAATGTTTCCAGAGACACTCTCATCAAAGGAATTTCTGAAAAACGCCAT
GTGCTGGCTGTCTGCTTTTCTGGCCCTTATCTACAGAGGACCTTTCTGCAGGCTTCTACTATGTGA
CCATAGAGACCGGCATCAACCTCCGTGGGGCTCTGCTGGCTATGATATAACAATAAAATCCTTCGGCTCTC
GACTTCTAACCTATCCATGGGTGAGATGACCCTGGGACAGATCAACAACCTGGTTGCCATAGAAACCAAT
CAGCTCATGTGGTTCTTGTCTGTGCCAATCTGTGGGCCATGCCTGTTCCAGATCATAATGGGGGTGA
TCCTGCTCTACAATTTGCTTGGGTGAGTGCAGTGGTGGCGCTGCAGTCATTGTCTCCTTGCACCGAT
TCAGTACTTATTGCCACGAAGCTGGCGGAGGCTCAGAAGAGCACTCTGGATTATCCACCGAGAGGTTG



[View online >](#)

AAGAAGACGAATGAGATACTGAAGGGCATCAAACCTCCTTAAGCTGTACGCCTGGGAGCACATTTTCTGCA
AGAGCGTGGAGGAGACACGAATGAAGGAGCTCTCCAGCCTCAAAACCTTCGCGCTCTACACGTCACCTTC
CATCTTATGAACGCAGCAATCCCATCGCAGCTGTTCTTGCACATTTGTGACACATGCGTACGCCAGT
GGAAACAACCTGAAGCCTGCAGAGGCCCTTTCCTCTCTGTCTCTTCCACATCCTCGTCACACCCGCTCT
TCCTGTGTCCACGGTGGTCAGATTTCGAGTCAAAGCCATCATCAGTGTCAAAGCTGAATGAGTTTCT
CTTGAGCGATGAGATTGGTGAGGACAGCTGGAGGGCCGGGAGGGCAGCCTGCCTTTCGAGTCTGTAAAG
AAGCACACCGGAGTGAATCAAAACCAATAAACAGGAAGCAGCCTGGACGGTACCCACCTGGACAGCTACG
AGCAAGCACGGCCCTCCGGCCCGCTGAGACGGAAGACATTGCCATAAAGGTGACAAATGGATACTTCTC
ATGGGGCAGTGGTTAGCTACATTGTCCAATATTGACATTGCAATTCCAACAGGTCAGCTAACCATGATT
GTAGGCCAAGTGGTTGTGAAAATCATCTCTTCTCCTTGCCATCCTTGGTGAGATGCAGACCCTGGAAG
GAAAAGTTTACTGGAACAACAGAAGCAGGTATTCTGTGGCTTACGCTGCCAGAAGCCTTGGCTCTAAA
TGCTACAGTTGAGGAAAATATCACTTTTGAAGTCCTTTCAACAGACAGAGGTACAAGGCTGTACCCGAT
GCCTGCTCTCTCAGCCAGACATTGATTGCTACCATTGGAGACCAAACCTGAAATCGGAGAGAGGGGCA
TCAACCTGAGTGGGGTTCAGAGGCAGAGAATCTCGTGGCAGGGCAGCTTACCAAAACACCAACATCGT
CTTTTTGGACACCCATTCTCTGCCCTGGACATCCACCTGAGCGATCATTGATGCAGGAAGGAATCCTG
AAGTTTCTCCAGGATGACAAGAGGACGGTTGTTCTTGTGACGCACAACTGCAGTACCTGACGCAGCCTG
ACTGGATCATAGCCATGAAGGATGGCAGTGTGTTAAGGGAAGGGACTTTGAAAGACATTCAGACCAAAGA
CGTGGAGCTTTATGAACACTGAAAACCCCTCATGAATAGACAGGATCAAGAAATGAAAAGGACATGGAA
GCAGACCAAACAACACTGGAGAGGAAGACTCTCCGGAGAGCCATGATTCAAGAGAGGCCAAGGCACAGA
TGGAGGATGAAGATGAAGAGGAGGAAGAGGAGGAAGATGAGGAAGATAACATGTCAACGGTGTGAGGCT
CAGGACCAAGATGCCCTGGAAGACCTGCTGGTGGTACCTCACTCAGGAGGGTTTTTCTGCTCTTCCTC
ATGATCTTCTCAAGCTTTTGAAGCCTCGGTGATTGTGGCTATAGACTACTGGCTAGCTAGCTGGACAT
CCGAATACAGTATAAACCATCCTGAAAAGCTGACCAGACCTTCTATGTGGCTGGGTTTCCAGCATCTCTG
TGGAGCAGGCATTTTCTTTGCTCGTCCCTCCCTCACCGTGGAAATGGATGGCCCTCACAGCCGCCAAG
AACCTCCACCACAACCTCCTCAATAAGATAATTCTCGGGCCAATAAGGTTCTTTGATACCACCCGCTGG
GGCTGATCCTCAATCGGTTTTCTGCTGATACGAACATCATCGACCAGCATATCCCTCCGACCTTGGAGTC
GCTGACGCCTCCACCCTGCTCTGCCTGTCTGCTATTGGGATGATCTCCTATGCTACACCCGTGTTTCTC
GTCGCCCTTGGCCCTGGGTGTAGCCTTTTATTTATCCAGAAATACTCCGGGTTGCCTTAAGGATC
TCCAGAACTTGACGACAGCACCAGCTCCCTGCTTTGTCACCTCTCAGAAACAGCTGAAGGGCTCAC
CACTATCCGGCCTTCAGGCATGAAACCAGATTCAAGCAACGCATGCTGGAGCTGACAGACAGAAACAAC
ATTGCCTACTTATTTCTCTCAGCAGCCAACAGATGGCTGGAGGTCAGGACGGACTATCTGGGAGCGTGCA
TTGTTCTGACAGCCTCCATTGCATCCATTAGTGGCTCTTCAACTCTGGACTGGTGGGCTTGGGCCCTTCT
CTATGCCCTCACGATAACCAATTACCTAAATTGGGTTGTAAAGAACTTGGCCGACCTGGAAGTCCAGATG
GGTGCAGTGAAGAAAGTGAACAGTTTCTTACTATGGAGTCCGAGAACTATGAAGGCACCATGGATCCTT
CTCAAGTCCCAGAGCACTGGCCACAGGAAGGCGAGATCAAGATTCACGATCTGTGTGCAGATATGAAA
TAACCTGAAGCCCGTTCTGAAACATGTCAAGGCTTACATCAAACCCGGGCAGAAAGTGGGCATCTGTGGT
CGAACTGGCAGTGGGAAGTCTCCTTATCCCTGGCTTTCTTCAAGATGGTCGACATATTTGACGGAAGA
TAGTCATTGATGGGATAGACATCTCAAACCTGCCCTTGCACACGCTCCGCTCCAGGCTGTCCATCATTCT
CCAGGACCAATCCTGTTGAGCGGCTCCATCAGGTTTAACTGGATCCTGAATGCAAGTGCACAGATGAC
AGGCTCTGGGAGGCTCTAGAAATTGCCAGCTGAAGAATATGGTCAAATCTCTGCCGGAGGCTTAGATG
CCTGTCACCGAAGGTGGTGAGAACTTCAAGTGTGGACAGAGACAGCTGTTCTGCCTGGCCAGGCCTT
TGTTCCGGAAGAGCAGTATACTCATCATGGATGAAGCCACTGTTCCATCGACATGGCCACGGAAAACATT
TTGCAGAAAGTAGTCATGACAGCCTTTGCGGATCGCACGGTCGTAACCATAGCTCACCGTGTCTTCTTA
TTGTGGATGCAGGCCTTGTGTTAGTCTTTTCTGAGGGTATTTTAGTGGAGTGTGATACTGGTCCAAACCT
GCTCCAGCACAAGAATGGCCTTTTTCTACTTTGGTGATGACCAACAAG

ACGCGTACGCGGCCGCTCGAG - GFP Tag - GTTTAA

Protein Sequence: >MG223933 representing NM_001044720
 Red=Cloning site Green=Tags(s)

```

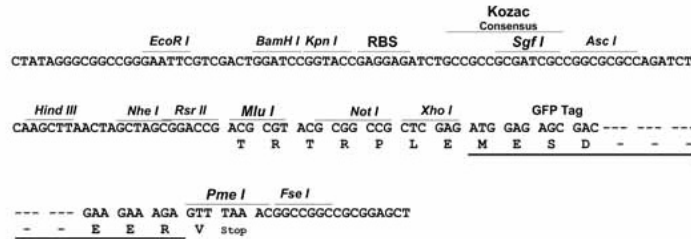
MSLSFCGNNISSYNIYYGVLQNPCFVDALNLVPHVFLFITFPILFIGWGSQSSKVQIHHNTWLHFPGHN
LRWILTFALLFVHVCEIAEGIVSDSHRASRHLHLMFPAVMGFVATTTISIVYHNIETS NFPKLLALFLY
WYMAFITKTIKLVKYWQLGWGVS DLRFCITGVMVILNGLLMAVEINVIRVRRYVFFMNPQKVKPPEDLQD
LGVRFLOPFVNLLSKATYWMNTLII SAHRKPIDLKAIGKLP IAMRAVTNYVCLKEAYEEQKKAADHPN
RTPSIWLAM YRAFRPILLSSTFRYLADLLGFAGPLCISGIVQRVNEKTNTTREMFPETLSSKEFLENAH
VLAVLLFLALILQRTFLQASYVYTIETGINLRGALLAMIYNKILRLSTSNLSMGEMTLGQINNLVAIETN
QLMWFLFLCPNLWAMPVQIIMGVILLYNLLGSSALVGA AVIVLLAPIQYFIATKLAEAQSTLDYSTERL
KKTNEILKGIKLLKLYAWEHIFCKSVEETRMKELSSLKTFALY TSLSIFMNAAPIAAVLATFVTHAYAS
GNNLKPAEAFASLSL FHILVTPFLLLSTVVRFAVKAIISVQKLN EFLLSDEIGEDSWRAGEGLPFESCK
KHTGVQSKPINRKQPGRYHLDSEYQARRLRPAETEDIAIKVTNGYFSWG SGLATLSNIDIRIPTGQLTMI
VGQVCGKSSLLAILGEMQTLEKGVYWNRSRYSVAYAAQKPWLLNATVEENITFGSPFNRRQYKAVTD
ACSLQPDIDLDPFGDQTEIGERGINLSGGQRQRCVARALYQNTNIVFLDDPF S ALDIHLSDHLMQEGIL
KFLQDDKRTVVLVTHKLQYLTHADWIIAMKDGSVLR EGTLDKIQT KDVELYEHWKTLMNRQDQELEK DME
ADQTTLERKTLRRAMYSREAKAQMEDEDEEEEEDEEDNMSTVMRLR TKMPWKCWWYLTSGGFLLLFL
MIFSKLLKHSVIVAIDYWLATWTSEYSINHPGKADQTFYVAGFSILCGAGIFLCLV TSLTVEWMGLTAAK
NLHHNLLNKIILGP IRFFDTPPLGLILNRF SADTNIIDQHIPP TLES LTRSTLLCLSAIGMISYATPVFL
VALAPLGVAFYFIQKYFRVASKDLQELDDSTQLPLLCHFSETA EGLTIRAFRHETRFKQRMLEL TDTNN
IAYLFLSAANRWLEVRDYL GACIVLTASIASISGSSNSGLVGLGLLYAL TITNYLNWVVRNLADLEVQM
GAVKKVNSFLTMESENYEGTMDPSQVPEHWPQEGEIKI HDLCVRYENNLKPV LKHVKAYIKPGQKVGICG
RTGSGKSSLSLAFRMDIFDGKIVIDGIDI SKLPLHLRSRLS IILQDPILFSGSIRFNLDP ECKTDD
RLWEALEIAQLKNMVKSLPGGLDATVTEGGENFSV GQRQLFLARAFVRKSSILIMDEATASIDMATENI
LQKVVMTAFADRTVV TIAHRVSSIVDAGLVLVFSE GILVECDTGP NLLQHKNGLFSTLVMTNK
  
```

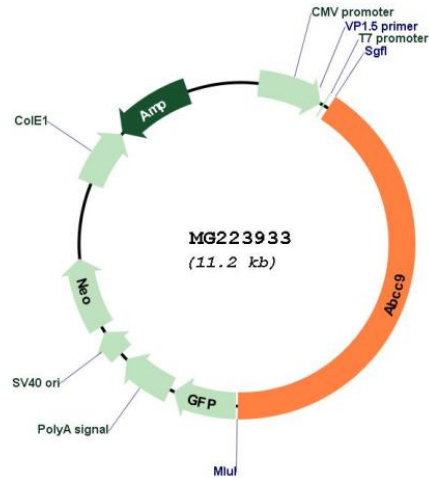
TRTRPLE - GFP Tag - V

Restriction Sites: SgfI-MluI

Cloning Scheme:

Cloning sites used for ORF Shutting:



Plasmid Map:


ACCN: NM_001044720

ORF Size: 4599 bp

OTI Disclaimer: The molecular sequence of this clone aligns with the gene accession number as a point of reference only. However, individual transcript sequences of the same gene can differ through naturally occurring variations (e.g. polymorphisms), each with its own valid existence. This clone is substantially in agreement with the reference, but a complete review of all prevailing variants is recommended prior to use. [More info](#)

OTI Annotation: This clone was engineered to express the complete ORF with an expression tag. Expression varies depending on the nature of the gene.

Components: The ORF clone is ion-exchange column purified and shipped in a 2D barcoded Matrix tube containing 10ug of transfection-ready, dried plasmid DNA (reconstitute with 100 ul of water).

Reconstitution Method:

1. Centrifuge at 5,000xg for 5min.
2. Carefully open the tube and add 100ul of sterile water to dissolve the DNA.
3. Close the tube and incubate for 10 minutes at room temperature.
4. Briefly vortex the tube and then do a quick spin (less than 5000xg) to concentrate the liquid at the bottom.
5. Store the suspended plasmid at -20°C. The DNA is stable for at least one year from date of shipping when stored at -20°C.

RefSeq: [NM_001044720.1](#), [NP_001038185.1](#)

RefSeq Size: 7499 bp

RefSeq ORF: 4602 bp

Locus ID: 20928

UniProt ID: [P70170](#)

Cytogenetics: 6 74.35 cM

Gene Summary: The membrane-associated protein encoded by this gene is a member of the superfamily of ATP-binding cassette (ABC) transporters. ABC proteins transport various molecules across extra- and intra-cellular membranes. ABC genes are divided into seven distinct subfamilies (ABC1, MDR/TAP, MRP, ALD, OABP, GCN20, White). This protein is a member of the MRP subfamily which is involved in multi-drug resistance. The human protein is thought to form ATP-sensitive potassium channels in cardiac, skeletal, and vascular and non-vascular smooth muscle. Protein structure suggests a role as the drug-binding channel-modulating subunit of the extrapancreatic ATP-sensitive potassium channels. Alternative splicing of this gene results in multiple transcript variants. [provided by RefSeq, Jul 2015]