

## Product datasheet for **MG223929**

### Abcc9 (NM\_011511) Mouse Tagged ORF Clone

#### Product data:

Product Type:	Expression Plasmids
Product Name:	Abcc9 (NM_011511) Mouse Tagged ORF Clone
Tag:	TurboGFP
Symbol:	Abcc9
Synonyms:	AI414027; AI449286; SU; SUR; Sur2; SUR2A; SUR2B
Mammalian Cell Selection:	Neomycin
Vector:	pCMV6-AC-GFP (PS100010)
E. coli Selection:	Ampicillin (100 ug/mL)
ORF Nucleotide Sequence:	>MG223929 representing NM_011511 Red=Cloning site Blue=ORF Green=Tags(s)

TTTTGTAATACGACTCACTATAGGGCGGCCGGAATTCGTCGACTGGATCCGGTACCGAGGAGATCTGCC  
GCC**CGATCGCC**

ATGAGCCTTTCTTTTGTGGGAACAACATCTCCTCCTACAACATCTATTATGGTGTCTCCAAAACCCCT  
GCTTTGTGGACGCACTCAACCTGGTCCCACATGTCTTCTGCTGTTTATCACCTTTCCAATACTGTTTCAT  
TGGATGGGGGAGCCAAAGCTCAAAGTGCAAATTCATCATAACACGTGGCTTCATTTTCCGGACACAAC  
CTGAGATGGATTCTGACGTTTGGCTCCTGTTTGTGCATGTTTGTGAGATAGCGGAAGGCATCGTTTCAG  
ACTCGCATCGGGGTCCAGGCATCTCCACCTTTTCATGCCGGCTGTGATGGGATTTGTCGCCACAACAAC  
GTCCATCGTCTATTATCATAACATTGAAACATCAAATTTCCCTAAATTACTTTTAGCTTTATTCTGTAC  
TGGGTAATGGCCTTTATTACAAAGACGATAAAGTTGGTCAAATACTGGCAGTTGGGGTGGGAGTGTGAG  
ACCTGCGCTTCTGCATCAGAGGATGATGGTCATCTTGAATGGGCTGCTGATGGCTGTGGAGATCAATGT  
CATCCGGGTCAGAAGATATGTTTCTTCATGAATCCCCAGAAAGTGAAGCCTCCGGAAGACCTCCAGGAC  
CTGGGCGTGAGGTTCTCCAGCCATTTGTGAATTTACTGTCCAAAGCTACTTACTGGTGGATGAACACAC  
TTATCATATCAGCTCACAGGAAACCTATCGATCTGAAGGCGATTGGAAAGTTGCCGATAGCGATAGGGG  
GGTGACCAATTATGTCTGCCTAAAGGAAGCCTATGAAGAGCAGAAGAAAAAGGCTGCCGATATCCAAAT  
CGGACTCCCTCCATATGGCTGGCCATGTACAGAGCTTTTGGGAGACCAATCCTGCTGAGCAGCACATTCC  
GGTACTTGGCTGACTTGCTGGGGTTGCTGGTCTCTTTGTATATCTGGGATAGTCCAGCGAGTAAATGA  
AAAGACTAACACAACAAGAGAAATGTTTCCAGAGACACTCTCATCAAAGGAATTTCTGAAAAACGCCAT  
GTGCTGGCTGTCTGCTTTTCTGGCCCTTATCTACAGAGGACCTTTCTGCAGGCTTCTACTATGTGA  
CCATAGAGACCGGCATCAACCTCCGTGGGGCTCTGCTGGCTATGATATACAATAAAATCCTTCGGCTCTC  
GACTTCTAACCTATCCATGGGTGAGATGACCCTGGGACAGATCAACAACCTGGTTGCCATAGAAACCAAT  
CAGCTCATGTGGTTCTTGTCTGTGCCAATCTGTGGCCATGCCTGTTCCAGATCATAATGGGGTGA  
TCCTGCTCTACAATTTGCTTGGGTGAGTGCAGTGGTGGCGCTGCAGTCATTGTCTCCTTGCACCGAT  
TCAGTACTTATTGCCACGAAGCTGGCGGAGGCTCAGAAGAGCACTCTGGATTATCCACCGAGAGGTTG



[View online »](#)

AAGAAGACGAATGAGATACTGAAGGGCATCAAACCTCCTTAAGCTGTACGCCTGGGAGCACATTTTCTGCA  
 AGAGCGTGGAGGAGACACGAATGAAGGAGCTCTCCAGCCTCAAAACCTTCGCGCTCTACACGTCACCTTC  
 CATCTTATGAACGCAGCAATCCCATCGCAGCTGTTCTTGCACATTTGTGACACATGCGTACGCCAGT  
 GAAACAACCTGAAGCCTGCAGAGGCCCTTTCCTCTCTGTCTCTTCCACATCCTCGTCACACCCGCTCT  
 TCCTGTGTCCACGGTGGTCAGATTTCGAGTCAAAGCCATCATCAGTGTCAAAGCTGAATGAGTTTCT  
 CTTGAGCGATGAGATTGGTGAGGACAGCTGGAGGGCCGGGAGGGCAGCTGCCTTCGAGTCTGTAAAG  
 AAGCACACCGGAGTGAATCAAAACCAATAAACAGGAAGCAGCCTGGACGGTACCACCTGGACAGCTACG  
 AGCAAGCACGGCCCTCCGGCCCGCTGAGACGGAAAGACATTGCCATAAAGGTGACAAATGGATACTTCTC  
 ATGGGGCAGTGGTTAGCTACATTGTCCAATATTGACATTGCAATTCCAACAGGTCAGCTAACCATGATT  
 GTAGGCCAAGTGGTTGTGAAAAATCATCTCTTCTCCTTGCCATCCTTGGTGAGATGCAGACCCTGGAAG  
 GAAAAGTTTACTGGAACAATGTAATGAATCTGAGCCTCTTTTGAAGCAACCCGAAGCAGAAGCAGGTA  
 TTCTGTGGCTTACGCTGCCCAGAAGCCTTGCTCCTAAATGCTACAGTTGAGGAAAAATCACTTTTGA  
 AGTCTTTCAACAGACAGAGGTACAAGGCTGTACCGATGCCTGTCTCTTACGCCAGACATTGATTTGC  
 TACCATTTGGAGACCAAACTGAAATCGGAGAGAGGGGCATCAACCTGAGTGGGGGTGAGAGCAGAGAAT  
 CTGCGTGGCAGGGCACTTACCAAAACACCAACATCGTCTTTTTGGACGACCCATTCTCTGCCCTGGAC  
 ATCCACCTGAGCGATCATTTGATGCAGGAAGGAATCCTGAAGTTTCTCCAGGATGACAAGAGGACGGTTG  
 TTCTTGTGACGCACAAACTGCAGTACCTGACGCACGCTGACTGGATCATAGCCATGAAGGATGGCAGTGT  
 GTTAAGGGAAGGGACTTTGAAAGACATTAGACCAAGACGTTGAGCTTTATGAACACTGAAAAACCTC  
 ATGAATAGACAGGATCAAGAATTAGAAAAGGACATGGAAGCAGACCAAAACACTGGAGAGGAAGACTC  
 TCCGGAGAGCCATGTATTCAAGAGAGGCCAAGGCACAGATGGAGGATGAAGATGAAGAGGAGGAAGGGA  
 GGAAGATGAGGAAGATAACATGTCAACGGTGTAGAGGCTCAGGACCAAGATGCCCTGGAAGACCTGCTGG  
 TGGTACCTCACTTCAGGAGGGTTTTTCTGTCTTCTCATGATCTTCTCAAGCTTTTGAAGCACTCGG  
 TGATTGTGGCTATAGACTACTGGCTAGCTACGTGGACATCCGAATACAGTATAAACCACTCTGAAAAAG  
 TGACCAGACCTTCTATGTGGCTGGTTTACAGCATCCTCTGTGGAGCAGGCATTTTCTTTGCTCGTCACC  
 TCCTCACCGTGAATGGATGGGCTCACAGCCGCAAGAACCTCCACCACAACCTCCTCAATAAGATAA  
 TTCTCGGGCCAATAAGGTTCTTTGATACCACCCGCTGGGGCTGATCCTCAATCGTTTTTCTGTGATAC  
 GAACATCATCGACCAGCATATCCCTCCGACCTGGAGTCGCTGACGCGCTCCACCCTGCTCTGCCTGTCT  
 GCTATTGGGATGATCTCCTATGTACACCCGTGTTTTCTCGTCGCCCTTGCGCCCTGGGTGATGCCTTTT  
 ATTTTCATCCAGAAACTTCCGGTTGCCTTAAGGATCTCCAGGAACCTGACGACAGCACCAGCTCCC  
 CCTGCTTTGTCACTTCTCAGAAACAGCTGAAGGGCTCACCCTATCCGGGCTTCAGGCATGAAACCAGA  
 TTCAAGCAACGCATGCTGGAGCTGACAGACACGAACAACATTGCCTACTTATTTCTCTCAGCAGCCAACA  
 GATGGCTGGAGGTCAGGACGGACTATCTGGGAGCGTGCATTGTTCTGACAGCCTCCATTGCATCCATTAG  
 TGGCTCTTCCAACCTCTGGACTGGTGGGCTTGGGCTTCTCTATGCCCTCACGATAACCAATTACCTAAAT  
 TGGGTTGTAAGGAACTTGGCCGACCTGGAAGTCCAGATGGGTGCAGTGAAGAAAGTGAACAGTTTCTTGA  
 CTATGGAGTCCGAGAACTATGAAGGCACCATGGATCCTTCTCAAGTCCCAGAGCACTGGCCACAGGAAGG  
 CGAGATCAAGATTCACGATCTGTGTGCAGATATGAAAATAACCTGAAGCCCCTTCTGAAACATGTCAAG  
 GCTTACATCAAACCCGGGAGAGGTGGGCATCTGTGGTGAAGTGGCAGTGGGAAGTCTCCTTATCCC  
 TGGCTTTCTTCAAGATGGTCGACATATTGACGGAAAGATAGTCATTGATGGGATAGACATCTCAAACCT  
 GCCCTTGACACAGCTCCGCTCCAGGCTGCCATCATTCTCCAGGACCCAATCCTGTTGAGCGGCTCCATC  
 AGGTTTAACTGGATCCTGAATGCAAGTGCACAGATGACAGGCTCTGGGAGGCTCTAGAAAATTGCCAGC  
 TGAAGAATATGGTCAAATCTCTGCCGGAGGCTTAGATGCCACTGTCACCGAAGGTGGTGAAGTTCAG  
 TGTGGACAGAGACAGCTGTTCTGCCTGGCCAGGGCCTTTGTTGGAAAGAGCAGTATACTCATATGGAT  
 GAAGCCACTGCTTCCATCGACATGGCCACGGAAAAACATTTTGCAGAAAGTAGTCATGACAGCCTTTGCGG  
 ATCGCACGGTCGTAACCATAGCTCATCGGGTTCACACCATTCTGACTGCAGACCTGGTTATTGTGATGAA  
 GAGAGGAAATATTTTGAATACGACACCCCGAAAGCCTCTTGGCCAGGAAGATGGAGTGTTCCTCG  
 TTTGTCCGTGCAGACATG

ACGCGTACGCGGCCGCTCGAG - GFP Tag - GTTTAA

**Protein Sequence:** >MG223929 representing NM\_011511  
 Red=Cloning site Green=Tags(s)

```

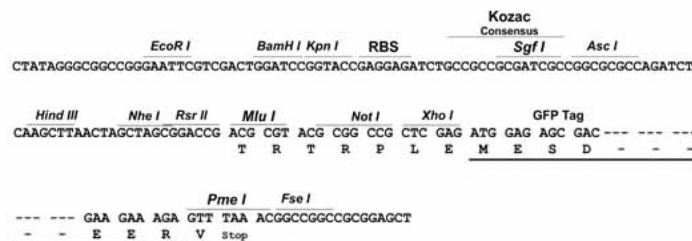
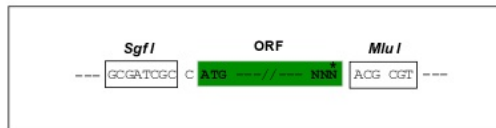
MSLSFCGNNISSYNIYYGVLQNPCFVDALNLVPHVFLFITFPILFIGWGSQSSKVQIHHNTWLHFPGHN
LRWILTFALLFVHVCEIAEGIVSDSHRASRHLHLMFPAVMGFVATTTIVVYHNIETSNFPKLLALFLY
WYMAFITKTIKLVKYQLGWGVSDDLRFICITGMVILNGLLMAVEINVIRVRYVFFMNPQKVKPPEDLQD
LGVRFLOPFVNLLSKATYWMNTLII SAHRKPIDLKAIGKLP IAMRAVTNYVCLKEAYEEQKKAADHPN
RTPSIWLAM YRAFGRPILLSSTFRYLADLLGFAGPLCISGIVQRVNEKNTTREMFPETLSSKEFLENAH
VLAVLLFLALILQRTFLQASYVYTIETGINLRGALLAMIYNKILRLSTSNLSMGEMTLGQINNLVAIETN
QLMWFLFLCPNLWAMPVQIIMGVILLYNLLGSSALVGAIVVLLAPIQYFIATKLAEAQKSTLDYSTERL
KKTNEILKGIKLLKLYAWEHIFCKSVEETRMKELSSLKTFALYTSLSIFMNAIPIAAVLATFVTHAYAS
GNNLKPAEAFASLSL FHILVTPFLLLSTVVRFAVKAIISVQKLNFLSDEIGEDSWRAGEGLPFESCK
KHTGVQSKPINRKQPGRYHLDSEYQARRLPAETEDIAIKVTNGYFSWGSLATLSNIDIRIPTGQLTMI
VGQVGCCKSSLLAILGEMQTLGKVVYNNVNESEPSFEATRSRSRYSVAYAAQKPWLLNATVEENITFG
SPFNRQRYKAVTDACSLQPDIDLDPFGDQTEIGERGINLSGGQRQRCVARALYQNTNIVFLDDPFSAID
IHLSDHLMQEGILKFLQDDKRTVVLVTHKLQYLTHADWIIAMKDGSVLREGTLKDIQTKDVELYEHWKTL
MNRQDQLEKDM EADQTTLERKTLRRAMYSREAKAQMEDEDEEEEEDEEDNMSTVMRLRTPMPWKTCW
WYLTSGGFFLLFLMIFSKLLKHSVIVAIDYWLATWTSEYSINHPGKADQTFYVAGFSILCGAGIFLCLVT
SLTVEWMGLTAAKNLHHNLLNKIILGPIRFDDTTPGLILNRFSA DTNIIDQHIPP TLES LTRSTLLCLS
AIGMISYATPVFLVALAPLGVAFYFIQKYFRVASKDLQELDDSTQLPLLCHFSETAEGLTTRAFRHE TR
FKQRMLELTD TNIA YLFLSAANRWLEVRTDYLGACIVLTASIASISGSSNSGLVGLGLLYALTITNYLN
WVVRNLADLEVQMGAVKKVNSFLTMESENYEGTMDPSQVPEHWPQEGEIKIHDL CVRYENNLKPVLKHVK
AYIKPGQKVGICGRTGSGKSSLSLAFFRMVDIFDGKIVIDGIDISKLPLHLRSRLSIIILQDPILFSGSI
RFNLDP ECKCTDDRLWEALEIAQLKNMVKSLPGGLDATVTEGGENFSVQQRQLFCLARAFVRKSSILIMD
EATASIDMATENILQKVYMTAFADRTVVTIAHRVHTILTADLVI VMKRGNILEYDTPESLLAQEDGVFAS
FVRADM
  
```

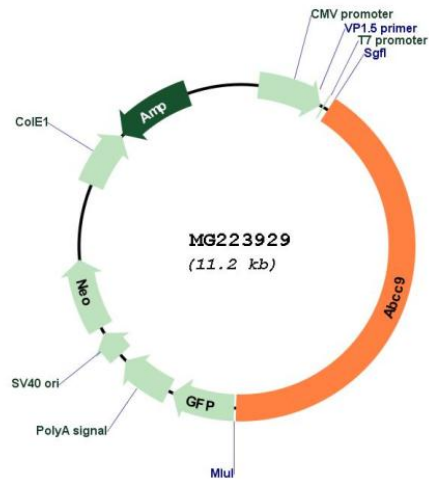
TRTRPLE - GFP Tag - V

**Restriction Sites:** SgfI-MluI

**Cloning Scheme:**

Cloning sites used for ORF Shuttling:



**Plasmid Map:**


**ACCN:** NM\_011511

**ORF Size:** 4638 bp

**OTI Disclaimer:** The molecular sequence of this clone aligns with the gene accession number as a point of reference only. However, individual transcript sequences of the same gene can differ through naturally occurring variations (e.g. polymorphisms), each with its own valid existence. This clone is substantially in agreement with the reference, but a complete review of all prevailing variants is recommended prior to use. [More info](#)

**OTI Annotation:** This clone was engineered to express the complete ORF with an expression tag. Expression varies depending on the nature of the gene.

**Components:** The ORF clone is ion-exchange column purified and shipped in a 2D barcoded Matrix tube containing 10ug of transfection-ready, dried plasmid DNA (reconstitute with 100 ul of water).

**Reconstitution Method:**

1. Centrifuge at 5,000xg for 5min.
2. Carefully open the tube and add 100ul of sterile water to dissolve the DNA.
3. Close the tube and incubate for 10 minutes at room temperature.
4. Briefly vortex the tube and then do a quick spin (less than 5000xg) to concentrate the liquid at the bottom.
5. Store the suspended plasmid at -20°C. The DNA is stable for at least one year from date of shipping when stored at -20°C.

RefSeq: [NM\\_011511.2](#), [NP\\_035641.1](#)

RefSeq Size: 7362 bp

RefSeq ORF: 4641 bp

Locus ID: 20928

UniProt ID: [P70170](#)

Cytogenetics: 6 74.35 cM

**Gene Summary:** The membrane-associated protein encoded by this gene is a member of the superfamily of ATP-binding cassette (ABC) transporters. ABC proteins transport various molecules across extra- and intra-cellular membranes. ABC genes are divided into seven distinct subfamilies (ABC1, MDR/TAP, MRP, ALD, OABP, GCN20, White). This protein is a member of the MRP subfamily which is involved in multi-drug resistance. The human protein is thought to form ATP-sensitive potassium channels in cardiac, skeletal, and vascular and non-vascular smooth muscle. Protein structure suggests a role as the drug-binding channel-modulating subunit of the extrapancreatic ATP-sensitive potassium channels. Alternative splicing of this gene results in multiple transcript variants. [provided by RefSeq, Jul 2015]