

## Product datasheet for **MG223913**

### Mink1 (NM\_001045959) Mouse Tagged ORF Clone

#### Product data:

Product Type:	Expression Plasmids
Product Name:	Mink1 (NM_001045959) Mouse Tagged ORF Clone
Tag:	TurboGFP
Symbol:	Mink1
Synonyms:	B55; Map4k6; MINK; Ysk2
Mammalian Cell Selection:	Neomycin
Vector:	pCMV6-AC-GFP (PS100010)
E. coli Selection:	Ampicillin (100 ug/mL)
ORF Nucleotide Sequence:	>MG223913 representing NM_001045959 Red=Cloning site Blue=ORF Green=Tags(s)

TTTTGTAATACGACTCACTATAGGGCGGCCGGGAATTCGTCGACTGGATCCGGTACCGAGGAGATCTGCCGCC**CGATCGCC**

ATGGGCGACCCAGCCCCCGCCGACGCTGGACGACATCGACCTGTCTGCCCTGCGGGACCTGCAGGAA  
TCTTTGAGCTGGTGGAGGTGGTTGGCAATGGAACCTATGGACAGGTATACAAGGGCGGCACGTCAAGAC  
TGGGCAGCTGGCTGCCATTAAGGTCATGGATGTCACAGAGGATGAGGAGGAAGAGATCAACAGGAAATC  
AACATGTTAAAGAAGTACTCTACCATCGCAATATTGCCACCTACTATGGGGCCTTTATCAAGAAGAGCC  
CTCCTGGGAACGATGACCAGCTCTGGCTGGTGATGGAGTTCTGCGGTGCTGGTTCAGTGACCGACCTGGT  
AAAGAACAACAAAAGGGAACGCACCTGAAGGAGGATTGCATTGCTTACATCTGCAGGGAGATTCTCAGGGGT  
CTTGCCCATCTCCATGCCACAAGGTGATCCACAGAGATATCAAGGGACAAAATGTGCTGCTGACAGAGA  
ATGCTGAAGTCAAGCTAGTGGATTTTGGGGTGAGTGCTCAGCTGGACCGCACTGTGGGCAGGCGGAACAC  
TTTCATTGGAACCCATACTGGATGGCTCCAGAAGTCAATGCCTGTGACGAGAACCCCGATGCCACCTAT  
GACTACAGGAGTGACATTTGGTCTCTAGGAATCACAGCCATTGAAATGGCAGAGGGAGCCCCCCTCTGT  
GTGACATGCACCCTATGCGGGCCCTCTTCTCATCCCTCGGAACCCTCCCCCAGGCTCAAGTCAAAGAA  
ATGGTCTAAGAAGTTCAGTACTGACCTCATCGACACGTGTCTCATCAAGACTTACCTGAGCCGCCACCCACC  
GAACAGTTACTCAAATTCCTTTCATCCGAGACCAGCCACGGAGCGGCAGGTCCGCATCCAGCTCAAGG  
ACCACATCGACCCTCGCGGAAGAAGCGGGGTGAGAAAGAGGAGACAGAGTATGAGTACAGCGGCAGTGA  
GGAGGAAGACGACAGCCATGGAGAGGAAGGCGAGCCAAGCTCCATCATGAATGTGCCCGGTGAGTCCACA  
CTGCGCAGAGAATTCTCAGACTCCAGCAGGAGAATAAGAGCAACTCTGAGGCTTTAAAGCAGCAGCAGC  
AGCTGCAGCAACAGCAGCAGCGGGACCCGGAGGCACACATCAAACACCTGCTGCACCAGCGGCAGCGTGC  
CATAGAGGAGCAGAAGGAGGAGCGGCGACGTGTGGAGGAGCAACAGCGGCAGAGCGAGAACAGCGTAAG  
CTACAAGAGAAGGAGCAGCAGCGCGGATTGGAAGACATGCAAGCCCTACGACGAGAGGAAGAGAGCGGC  
AAGCAGAGCGGGAACAGGAATACAAGCGGAAGCAGCTGGAGGAGCAGCGGACGTGAGCGGCTGCAGAG  
ACAGCTGCAGCAGGAGCAGCCTACCTCAAGTCCCTGCAGCAGCAGCAGCAGCAGCAGCAGCAGCTCCAGAAG



CAGCAGCAGCAGCAGCAGCAGATCCTGCCTGGAGACAGGAAGCCCTGTATCATTACGGTCGGGGCATT  
ATCCTGCTGACAAGCCAGCATGGGCCCGAGGTGGAAGAGAGAGCAGGATGAACAAGCAGCAGAACTC  
TCCCTTGGCGAAGGCGAAGCCAAGCAGTGCAGGAGGAGAGCCCCCATCTCCAGGCTCTCCTAGCCCC  
CCAGGACCTCTTCCAGACTCCTCCTATGCAGAGGCTGTGGAGCCCCAGGAAGGACCGCACAAGAGCC  
TGGTGGCACACCCGGTCCCACTGAAGCCATATGCAGCACCTGTACCCGATCCCAGTCCCTGCAGGACCA  
GCCGACTCGAAACCTGGCTGCCTTCCAGCCTCCACGACCCTGACCCTGCTGCTGTCCCTACACCCACT  
GCCAACCCCTCCATCCTGGGTTCCGGCCTGATAATGAGGCTCCACCTAAGGTTCCACAGAGGACCTTTC  
GCCCCAAACCCCTCCATCCTGGGTTCCGGCCTGATAATGAGGCTCCACCTAAGGTTCCACAGAGGACCTTTC  
TATCGCCACTGCCTTAAACCAGTGGGGCCGAGGGTCCCGGCCAGCTCAGGCTGTCCGTGCCAGACCT  
CGCAGTAACTCCGCTGGCAAATCTATCTGCAGAGGCGGGCAGAGCGGGGACCCCCAAGCCTCCCGGGC  
CCCCAGCTCAGCCCCCTGGCCCGCCCAACGCTCTAGTAAACCCTGACCTCAGGAGGAGTGACCCTGGCTG  
GGAGCGCTCAGACAGTGTCTCCCGCCTCCACGGCCACCTCCCTCAGGCTGGCTCCTTGGAGCGGAAC  
CGAAACCGTGTGGGAGCCTCCACAAAATGGATAGCTCTCCAGTGTCTCCCTGGGAACAAAGCCAAGC  
CTGAAGACCACCCTCAAGGCCAGGCCGCCCCGACAGACTTGTGTGCTCAAAGAGCGGACTCTGGATGA  
GGCCCCAAGCCTCCCAAGAAGGCCATGGACTACTCCTCATCCAGTGAGGAGGTGAAAGCAGTGAAGAG  
GAGGAGGAGGAAGCGATGGGGAGCCGTAGAGGGGAGCAGAGACTCCCGGGGCCCGAGTGATGGTG  
ATACAGACAGCGTCAGCACCATGGTGGTTCATGATGTTGAGGAGATATCCGGGACCCAGCCCTCATATGG  
CGGCGGCCACCATGGTGGTCCAGCGTACTCCTGAAGAGGAACGAAGCCTGTGCTTGTGATAGCAATGGC  
TACACAAACCTGCCTGATGTGGTCCAGCCAGCCACTCACCTACTGAGAACAGCAAAGGTCAAAGCCCTC  
CAACAAAGGATGGAGGCAAGTATTACCAGTCTCGTGGGCTGGTAAAGGCCCCAGGAAAGAGCTCATTAC  
CATGTTTGTGGATCTAGGGATCTACCAGCCTGGAGGCAAGTGGGGACCATCCCTATCACAGCCCTAGTG  
GGTGGAGAAGGTGGTGCCTTGTCAACTGCAGTTCGATGTGAGGAAGGGCTCTGGTCAACGTCAATC  
CCACCAACACCCGAGCTCATAGTAAAATCCTGAAATTCGCAAGTACAAGAAGCGATTCAACTCAGAGAT  
CCTATGTGCAGCTCTTGGGGGTCAACCTCCTAGTGGGCACAGAGAATGGGCTGATGTTGCTGGACCGA  
AGTGGGCAGGGCAAGGTGTATGGACTTATTGGGCGACGACGCTTCCAGCAAATGGATGTCTTAGAAGGGC  
TCAACTTGCTCATCACCATCTCAGGGAAAAGGAACAAACTGCGGGTATATTACCTGTCTGGCTTCGGAA  
CAAGATCTACACAATGACCCAGAGGTGAAAAGAAGCAGGGGTGGACCACCGTGGGGGACATGGAGGGC  
TGCGGCCACTACCGTGTGTGAAATATGAACGGATTAAGTTCCTGGTCATTGCCCTGAAGAACTCCGTGG  
AGGTTTATGCCTGGGCTCCCAAACCCTACCACAAATTCATGGCCTTCAAGTCTTTGCTGACCTCCCTCA  
CCGCCCTACTGGTGGACCTGACAGTAGAGGAGGACAGCGGCTCAAGGTCATCTATGGCTCCAGTGTCT  
GGCTTCCATGCTGTGGATGTTGATTCTGGGAACAGCTATGACATCTACATCCCTGTACATATCCAGAGCC  
AGATCACACCCACGCCATCATCTTCTCCCAACACTGATGGCATGGAGATGCTGCTGTGCTATGAAGA  
TGAGGGTGTCTATGTCAACACTTACGGGCGGATCATCAAGGATGTGGTGTGCAGTGGGGAGAGATGCC  
ACCTCTGTGGCCTACATCTGCTCCAACCAGATAATGGGCTGGGGTGAAGAGGCCATAGAGATCCGCTCTG  
TGGAGACAGGCCACTAGATGGGGTCTTATGCACAAACGAGCCAGAGGCTCAAGTTCCTGTGTGAGCG  
CAATGACAAGGTGTTTTTGCCTCTGTCCGCTCTGGAGGAAGCAGCCAAGTTTACTTTATGACTCTGAAC  
CGTAACTGCATCATGAACTGG

ACGCGTACGCGGCCGCTCGAG - GFP Tag - GTTTAA

Protein Sequence: >MG223913 representing NM\_001045959  
 Red=Cloning site Green=Tags(s)

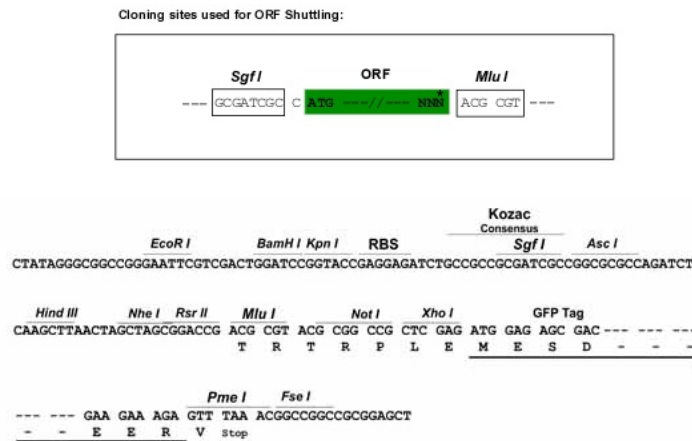
MGDPAPARSLDDIDL SALRDPAGIFELVEVVNGTYGQVYKGRHVKTGQLAAIKVMDVTEDEEEEIKQEI  
 NMLKKYSHHRNIATYYGAFIKKSPGNDQLWL VMEFCGAGSVTDLVKNTKGNALKEDCIAYICREILRG  
 LAHLHAHKVIHRDIKQNVLL TENAEVKLVDFGVSAQLDRTVGRNRTF IGTPYWMAPEVIACDENPDATY  
 DYRSDIWSLGITAIEMAEGAPPLCDMHPMRALFLIPRNPPLKSKKWSKKFTDFIDTCLIKTYLSRPPT  
 EQLLKFPFIRDQPTERQVRIQLKDHIDRSRKKRGEKEETEYEGSSEEDDSDHGEPEGSSIMNVPGEST  
 LRREFLRLQQENKSNSEALKQQQQQLQQQQQORDPEAHIKHLLHQQRRIIEEQKEERRRVEEQRREREQRK  
 LQEKEQQRRLEDMQALRREEERRQAEREQEYKRKQLEEQRQSERLQRQLQQEHAYLKSLQQQQQQQLQK  
 QQQQQQILPGDRKPL YHYGRGINPADKPAWAREVEERARMNKQNSPLAKAKPSSAGPEPPISQASPS  
 PGPLSQTPPMQRPVPEQEGPHKSLVAHRVPLKPYAAPVPRSQSLQDQPTRNLAAFPASHDPDPAAVPTPT  
 ATPSARGAVIRQNSDPTSEGGPSNPPSWVRPDNEAPPKVPQRTSSIALNTSGAGGSRPAQAVRARP  
 RNSAWQIYLQRAERGTPKPPGPPAQP GPPNASSNPDLRRSDPGWERSDSVLPASHGHL PQAGSLERN  
 RNRV GASTKLDSSPVLSPGNKAKPEDHRSRPGRPADFVLLKERTLDEAPKPPKAMDYSSSEEVESSEE  
 EEEE GDGEPSEGRDTPGGRSDGDTDSVSTMVVDVVEEISGTQPSYGGGT MVVQRTPEEERL LADSNG  
 YTNLPD VVQPSHPTENSKGQSPPTKGGSDYQSRGLVKAPGKSSFTMFVDLGIYQPGGSGDTPITALV  
 GGEGGRLDQLQFDVRKGSVVNVNPTNTRAHSETPEIRKYKRFNSEILCAALWGVNLLVGTENGLMLLDR  
 SGQKVVYGLIGRRRFQQMDVLEGLNLLITISGKRNLRVYYLSWLRNKILHNDPEVEKKQGWTTVGDMEG  
 CGHYRVVYKERIKFLVIALKNSVEVYAWAPKPYHKFMFKSFADLPHRPLLVDL TVEEGQRLKVIYGSSA  
 GFHAVD VDSGNSYDIYIPVHIQSQITPHAIIFLPNTDGMEMLLCYEDEGVYVNTYGRIIKDVVLQWGEMP  
 TSVAYICSNQIMGWGEKAIEIRSVETGHL DGVFMHKRAQRLKFLCERNKVVFFASVRSGGSSQVYFMTLN  
 RNCIMNW

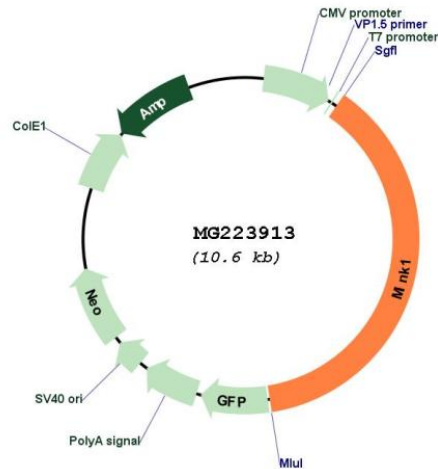
TRTRPLE - GFP Tag - V

Restriction Sites:

Sgfl-MluI

Cloning Scheme:



**Plasmid Map:**


**ACCN:** NM\_001045959

**ORF Size:** 4011 bp

**OTI Disclaimer:** The molecular sequence of this clone aligns with the gene accession number as a point of reference only. However, individual transcript sequences of the same gene can differ through naturally occurring variations (e.g. polymorphisms), each with its own valid existence. This clone is substantially in agreement with the reference, but a complete review of all prevailing variants is recommended prior to use. [More info](#)

**OTI Annotation:** This clone was engineered to express the complete ORF with an expression tag. Expression varies depending on the nature of the gene.

**Components:** The ORF clone is ion-exchange column purified and shipped in a 2D barcoded Matrix tube containing 10ug of transfection-ready, dried plasmid DNA (reconstitute with 100 ul of water).

**Reconstitution Method:**

1. Centrifuge at 5,000xg for 5min.
2. Carefully open the tube and add 100ul of sterile water to dissolve the DNA.
3. Close the tube and incubate for 10 minutes at room temperature.
4. Briefly vortex the tube and then do a quick spin (less than 5000xg) to concentrate the liquid at the bottom.
5. Store the suspended plasmid at -20°C. The DNA is stable for at least one year from date of shipping when stored at -20°C.

**RefSeq:** [NM\\_001045959.1](#), [NP\\_001039424.1](#)

**RefSeq Size:** 4973 bp

**RefSeq ORF:** 4014 bp

**Locus ID:** 50932

**Cytogenetics:** 11 B3

**Gene Summary:**

Serine/threonine kinase which acts as a negative regulator of Ras-related Rap2-mediated signal transduction to control neuronal structure and AMPA receptor trafficking. Required for normal synaptic density, dendrite complexity, as well as surface AMPA receptor expression in hippocampal neurons. Can activate the JNK and MAPK14/p38 pathways and mediates stimulation of the stress-activated protein kinase MAPK14/p38 MAPK downstream of the Raf/ERK pathway. Phosphorylates: TANC1 upon stimulation by RAP2A, MBP and SMAD1. Has an essential function in negative selection of thymocytes, perhaps by coupling NCK1 to activation of JNK1.[UniProtKB/Swiss-Prot Function]