

Product datasheet for **MG223893**

Cacng8 (NM_133190) Mouse Tagged ORF Clone

Product data:

Product Type:	Expression Plasmids
Product Name:	Cacng8 (NM_133190) Mouse Tagged ORF Clone
Tag:	TurboGFP
Symbol:	Cacng8
Synonyms:	mir-935
Mammalian Cell Selection:	Neomycin
Vector:	pCMV6-AC-GFP (PS100010)
E. coli Selection:	Ampicillin (100 ug/mL)
ORF Nucleotide Sequence:	>MG223893 representing NM_133190 Red=Cloning site Blue=ORF Green=Tags(s)

TTTTGTAATACGACTCACTATAGGGCGCCGGGAATTCGTCGACTGGATCCGGTACCGAGGAGATCTGCC
GCC**CGATCGCC**

CTGGAGTCATTGAAACGCTGGAATGAAGAGAGGGGTTTGTGGTGTGAAAAGGGCGTTTCAGGTA
CTACTGACCCACCATCGGCCATCAGCACTGACTACTGGCTCTACACAGAGCTCTCATCTGCAACACCACCAACCTCACAGCAGGTGATGACGGACCACCCATCGTGGGGGAGT
GGCTCCTCCGAGAAGAAGACCCTGGGGGCTCACACATTCAGGCCTCTGGCGGATATGCTGCCTGGAAG
GGTTGAAAAGAGGTGTCTGCGTGAAGATCAACCACTTCCCGAGGACACGGACTACGACCACGACAGCGC
GGAGTACCTGCTCCGAGTAGTCCGGCTTCCAGCATCTTCTATCCTGAGCGCCATCCTGCTGCTGCTC
GGGGCGTGTGCGTAGCTGCCTCCCGCTACAAGTCCAAAAGGAACATCATCCTGGGCGCAGGGATCC
TGTTTCGTGGCAGCAGGCTTGAGCAACATCATCGGGGTGATTGTGTACATATCGGCCAACCGCGGAGCC
TGGCCCAAGAGGGACGAGGAGAAGAAAACCACTACTCGTACGGCTGGTCTTCTACTTCGGCGGGCTG
TCCTTCATCCTGGCTGAGGTGATCGGAGTACTGGCCGTCAACATCTACATCGAGCGCAGCCGCGAGGCAC
ACTGCCAATCACGCTCGGACCTGCTCAAGGCCGGCGGGCGGGCGGGCGGAGTGGCGGGAGCGGCCCTC
GGCCATCCTCCGTCTGCCAGTTACCGCTTCCGCTACCGCCCGCTCCCGCTCCAGTCCCGAGGCTCC
AGCGAGCGTCCCATCCCGGATGCGTCTCCGGCGGCCCGGGGCGGGGCTTCGCCTCCACGGACA
TCTCCATGTACACGCTCAGCCGCGACCCGTCCAAGGGCAGCGTGGCTGCGGGGCTGGCGAGCGCCGCTGG
CGGCGGCAGCGGTGCCGCGTGGGTGCCTACGGCGGGGCGGGCGGGGCGGGGCGGGGCGGGGCGGGG
TCGGAGCGGGACCGGGAGCTCGGCGGGTTTTCTCACGCTGCACAACGCCTTCCCAAGGAAGCGGCT
CCGGCGTACGGTACAGTACCGGACCGCCGCTGCACCGCGCCCGCGCCGCGCCGCGCCGCTCCTGC
AGCGCCCGCGCCCGGACCTGTCAAAGAGGCCGCGGCTCCAACACCAACACGCTCAACAGGAAAACC
ACGCCGTG

ACGCGTACGCGGCCGCTCGAG - GFP Tag - GTTTAA



[View online »](#)

Protein Sequence: >MG223893 representing NM_133190
 Red=Cloning site Green=Tags(s)

```

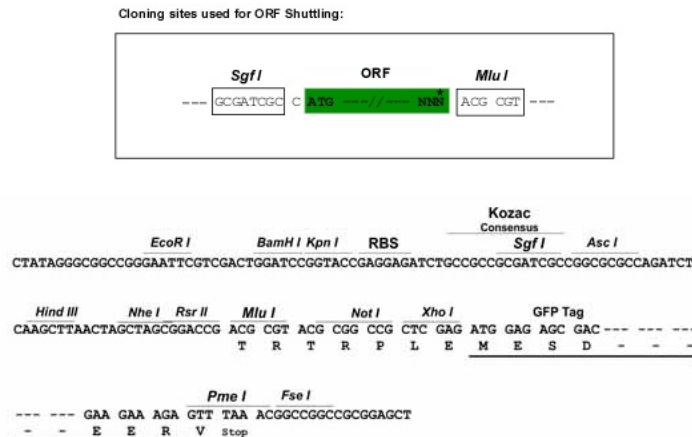
LESLKRWNEERGLWCEKGVQVLLTTIGAFSAFGLMTIAISTDYWLYTRALICNTTNTLTAGDDGPPHRGGS
GSSEKDPGGLTHSGLWRICCLEGLKRGVCVKINHFPEDTDYDHDSA EYLLRVVRASSIFPILSAILLLL
GGVCVAASRVYKSKRNII LGAGILFVAAGLSNIIGVIVYISANAGEPGPKRDEEKNHYSYGWSFYFGGL
SFILAEVIGVLAVNIYIERSREAHQCQRSDLLKAGGGAGGSGGSGPSAILRLPSYRFRYRRRSRSSRGS
SEASPSRDASPGPGPGGFASDTISMYTL SRDP SKGSVAAGLASAGGGGSGAGVGVYGAAGAAGGGGAG
SERDRGSSAGFLTLHNAFPKEAASGVTVTVTGPPAAPAPAPAPPAPAAPAGTLSKEAAAANTNTLNRKT
TPV
  
```

TRTRPLE - GFP Tag - V

Restriction Sites:

SgfI-MluI

Cloning Scheme:



ACCN: NM_133190

ORF Size: 1269 bp

OTI Disclaimer: The molecular sequence of this clone aligns with the gene accession number as a point of reference only. However, individual transcript sequences of the same gene can differ through naturally occurring variations (e.g. polymorphisms), each with its own valid existence. This clone is substantially in agreement with the reference, but a complete review of all prevailing variants is recommended prior to use. [More info](#)

OTI Annotation: This clone was engineered to express the complete ORF with an expression tag. Expression varies depending on the nature of the gene.

Components: The ORF clone is ion-exchange column purified and shipped in a 2D barcoded Matrix tube containing 10ug of transfection-ready, dried plasmid DNA (reconstitute with 100 ul of water).

- Reconstitution Method:**
1. Centrifuge at 5,000xg for 5min.
 2. Carefully open the tube and add 100ul of sterile water to dissolve the DNA.
 3. Close the tube and incubate for 10 minutes at room temperature.
 4. Briefly vortex the tube and then do a quick spin (less than 5000xg) to concentrate the liquid at the bottom.
 5. Store the suspended plasmid at -20°C. The DNA is stable for at least one year from date of shipping when stored at -20°C.

RefSeq: [NM_133190.1](#), [NP_573453.1](#)

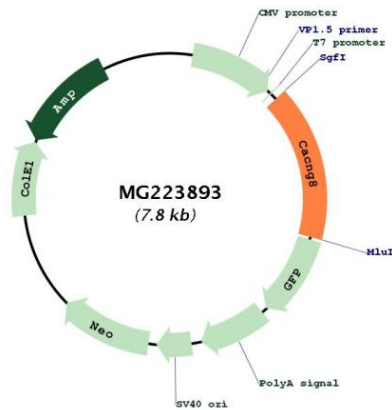
RefSeq Size: 1380 bp

RefSeq ORF: 1272 bp

Locus ID: 81905

Cytogenetics: 7 1.98 cM

Product images:



Circular map for MG223893