

Product datasheet for **MG223889**

Phf2011 (NM_001081409) Mouse Tagged ORF Clone

Product data:

Product Type:	Expression Plasmids
Product Name:	Phf2011 (NM_001081409) Mouse Tagged ORF Clone
Tag:	TurboGFP
Symbol:	Phf2011
Synonyms:	CGI-72; E130113K22Rik
Mammalian Cell Selection:	Neomycin
Vector:	pCMV6-AC-GFP (PS100010)
E. coli Selection:	Ampicillin (100 ug/mL)
ORF Nucleotide Sequence:	>MG223889 representing NM_001081409 Red=Cloning site Blue=ORF Green=Tags(s)

TTTGTAAATACGACTCACTATAGGGCGGCCGGAATTCGTCGACTGGATCCGGTACCGAGGAGATCTGCC
GCC**CGATCGCC**

ATGAGTAAAAAGCCCCAAATCGTCCTGGAATCACTTTTGAGATTGGTGCTCGTTTGAGGCACTGGACT
ACTTACAGAAATGGTATCCATCCGAATTGAAAAATTGATTATGAAGAAGGGAAGATGCTAGTCCATTT
TGAGCGCTGGAGTCATCGATATGATGAGTGGATTTACTGGGACAGCAACAGGTTGCGACCCCTTGAGAGA
CCTGCACTAAGGAAAGAAGGGCTAAAGGATGAGGAAGAGCTCTTTGATTTTAAAGCTGGAGAAGAAGTAC
TGGCTCGTTGGACAGACTGTCGCTATTACCCTGCCAAGATTGAAGCAATTAACAAAGAAGGAACATTCAC
AGTTTCAGTTTTATGATGGCGTAATCCGTTGTTTAAAAAGAATGCACATTAAGCCATGCCTGAGGATGCT
AAGGGGCAGGTGAAATCCAGCATCCACTAAGCTGGTGTGTCTATCGACCCAGCTGGATCGTGTAAACC
AGTCTATGGGAAGTGAGGACTGGATTGCTTTAGTCAAAGCAGCTGCTGCAGCTGCAGCGAAAAATAAAAC
AGGGACTAAACCTCGAGCCAGTGCTAACAGCAATAAAGAGAAAGAGAGATGGGGGAAATGGTTCAAA
TTACCTTCAAAGAAGGCAGAGACTTCAACGTGCATAGTCACAGCAGAGATTGAGAAGAAGGAGGAACATC
CCACATCCAGTGAAACATTTGGACTTCACATAGACACCGTTCCAAAGATCGTCTTTCCACAGCCAGAGAG
CACATTAAACAAAGAGGAGAAAAATAATCAAGGCAACTCATTTCAAGCAAGAGAGCCCGACTTAACAAG
ATCACTGGTTTGTGGCATCCAAAGCTGTTGGGTGGTGGTGTGAAAGAAAAGAAGACTGCAGTGCAA
CAGCTCCAGTCCTGGAGCAGGCGATTTACCTAAACCTCAAAGTCAGAAAAAAATGAAGCTGTCATTAG
CAGTTCTGCCAAGCACTCAGAAACCTGCACTGTTATCCTCAACTTTGTCTTCAGGGAAGGCTCGCAGCAAG
AAATGCAACATGAATCTGGAGAGTCTTCTGGGTGTATAAAACCCCTAAGTCACCACTTGCCCCAGAGT
TAATACAAGCCAAGGATTTGACGCTTGATCTCAGCTTTCTTCAGTGATAAATAAACTAGTTCTCCACA
GCCTGTGAATCCCCCTAGACCTTGCAAGCATAGTGAGAGAAGAAGAAGATCCAGCGCTTAGCCACCTTA
CCCATGCCTGATGACTCTCTAGAAAAGCTTTCTTCTCTTCAGCACTGATGGCAAAGCATTCTCCA
TCAGTTCTCAGAATCAGCAACAGTCTTCAGTACCAGAGGTGCCTGCTATCGCGTATGTGCCGCTCCAGAA
GCTGGGCCCTGCCTCCCTCTTGATTTAAGTTGTGGTTCAGAAGTCAGGGAGTGAACCCACATCCC



View online »

TCCATCATCGTGGTGAATGTCCCAGGGAAGAAAGGAGGAGACGCCGTGTTGTGCAATCCCACTCCA
AAGTAGTGAGTGATGTAAAAGGAGCTGCAGCAGCTACAGGAATATCGAAAAAGAAAAAGGTGAAATT
GGAAGAAAAAACCTCCACTGCATTTGGTAAAAGGAAAGAAAAGGATAAGGAAAAAAGAGAAGCGAGAG
AAAGATCACTACAAACCAAGCAGAGAAAAAGAAAGAAAGAAAAAGAAATCTAAACAGCACGATTATT
CGGACTATGAAGACAGTTCCCTAGACTTTTTGGAAGGTGTTCTCTCCACTAACTAGATCTTCTGGGAG
TTCTCTGGCTCCACGAAGCACATTTACGGAGAAAACTACAACCTATCAGTACCCGAGGGCAATTCTGTCT
GTTGATCTTAGTGGTGAAAAATTTGTCAGATGTGGAATTCCTGGATGACTCTTCCACAGAGAGCCTGCTTC
TGAGTGGGGATGAGTACAACCAAGACTTTGATTCAACTAATTTTGGAGGACTCTCAGGATGAAGACGATGC
TCTTAATGAGATTGACGCTGTATCTGTGAACGGATGAGGAGAAATGGCTTCATGATCAGTGTGAAGAG
TGCCATATGCTGGCAGCAGCATGTGTGCATGTGGGCTCCTGGAGGACAGCATTCGGAGCAGTACATCTGCT
ACATCTGTGGGACCCTCCGGGTGAGAGATGGAGTGCAAAATATCGTTATGATAAGGAGTGGTTGAATAA
TGGAAGAATGTATGGGTATCTTTTTTAAAGAAAAATTATTCTCATCTCAATGCCAAAAAATAGTTTCC
ACACATCATCTTCTGCTGATGTCTATGGTGAACCTGAAGTACTGCATGGATTACAGCTTAAGATTGGAA
TACTAAGAATAAACATCATCCTGACCTTCATCTCTGGGCTTATTCTGGGAAGAGGAAAGACCAAGATCA
GGCAGTAGCTGAAGCAGAGAGAAAAATACACCTCAGGACAGAGCTAACTCAGAGGGGAAGGAGTGTGTA
CAGAACCACAAGGAACCAAGCCCTGAGAATGGAAGAACTTACATAACAAGCGAGCACAGCTATCAAAAGC
CACAAAGCTTTAGTCAGGACTGCCAGTCTCTCACAGACCCTGGAAGCTCAGATGATGATGCTAGCAG
TTTTGAAGAAGATGGGGAGCTCCGTGTGCCAGATAAAAGCCATCTTCTGTACAAAAATCGGGGAGTGTCA
GAGAAGAATCCAGCTTCAGGGAATAAAGTGTTTGTTTAATGATAAAAAGGGCACGGAGGGCCCAGGAG
ACTCGCATCTTCAGTGGCAGCTAAATCTCCTCACGCACATAGAAAATGTGCAGAAATGAAGTCACGACGAG
GTGGACCTCATAGAAAAAGAGTGGACGTTCTGGAAGCTGGCTTGATTTACAGGGGAGTTGGAGCCA
CCAGATCCCCTTGCAAGACTGCCCAACTTAAACGTCACTTAAACAACCTTACTTGACGTGGGCAAG
TACAACAAATTGCAACTCTTTGCTCTGTA

ACGCGTACGCGGCCGCTCGAG - GFP Tag - GTTTAA

Protein Sequence:

>MG223889 representing NM_001081409

Red=Cloning site Green=Tags(s)

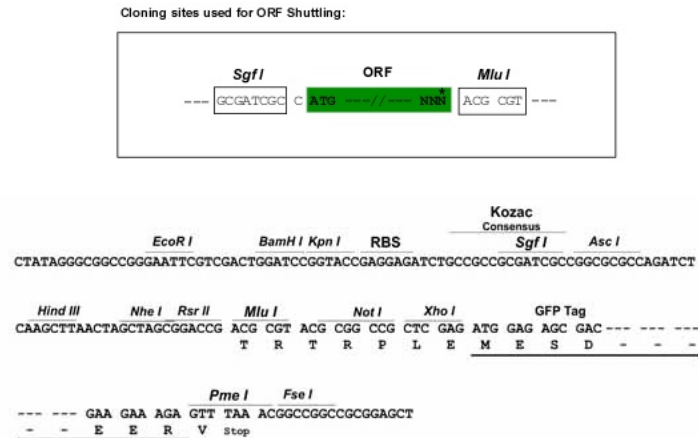
MSKKPPNRPGITFEIGARLEALDYLQKWYPSRIEKIDYEEGKMLVHFERWSHRYDEWIYWSNRLRPLER
PALRKEGLKDEEELDFDKAGEEVLARWTDCRYPPAKIEAINKEGTFVQFYDGVIRCLKRMHIKAMPEDA
KGQVKSQHPLSWCCPIDPAGSCNQSMGSEDWIALVKAAAAAAANKNTGKTPRASANSNKEKERDGGKWFK
LPSKKAETSTCIVTAEIEKKEELPTSSETFGLHIDTVPKIVFPQPPESTLTNKRKNQGNSSFQAKRARLNK
ITGLLASKAVGVDGAERKEDCSATAPVLEQAISPKPQSQKKNKNEAVISSANTQKPALLSSTLSSSGKARSK
KCKHESGESSGCIKTPKSPLAPELIQAKDLTLVSQLSSVINKTSSPQPVNPPRPCKHSERRRRSQRLATL
PMPDDSLLEKLSSSSSATDGKAFISSQNQQQSSVPEVPAIAYVPLQKLGPCLPLDLSCGSEVTGSRTPHP
SYHGGECPREEKEETPLFANPTSKVVSVDVGAAAATGISKTEKKVKLEEKSTAFGKRKEKDKEKKEKRD
KDHYKPKQKKKKKKKKSKQHDYSDYEDSSDLFLERCSSPLTRSSGSSLAPRSTFTEKTTTTYQYPRAILS
VDLSGENLSDVEFLDDSSTESLLLSGDEYNQDFDSTNFEESSQEDDALNEIVRCICELDEENGFMIQCEE
CLCWQHSVCMGLLEDSEIPEQYICYICRDPGQWRWSAKYRYDKEWLNNGRMYGLSFLKENYSHLNAKKIVS
THHLLADVYGVTEVHLGLQLKIGIKLNKHHQDLHLWAYSGKRKQDQAVAAERKITPQDRANSEGKECV
QNNKPEPALMEETYITSEHSYQKQPSFSDQCDLTDPGSSDDDDASSFEEDGELRVPDKSHLLYKNRGVS
EKNPASGNKVIFYNDKKTEGPGDSDLQWQLNLLTHIENVQNEVTSRMDLIEKEVDVLESWLDFTGELER
PDPLARLPOLKRHLKQLLLDVGVQOIIATLCSV

TRTRPLE - GFP Tag - V

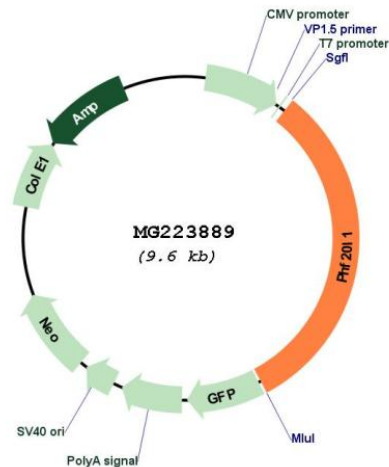
Restriction Sites:

Sgfl-MluI

Cloning Scheme:



Plasmid Map:



ACCN: NM_001081409

ORF Size: 3039 bp

OTI Disclaimer: The molecular sequence of this clone aligns with the gene accession number as a point of reference only. However, individual transcript sequences of the same gene can differ through naturally occurring variations (e.g. polymorphisms), each with its own valid existence. This clone is substantially in agreement with the reference, but a complete review of all prevailing variants is recommended prior to use. [More info](#)

OTI Annotation:	This clone was engineered to express the complete ORF with an expression tag. Expression varies depending on the nature of the gene.
Components:	The ORF clone is ion-exchange column purified and shipped in a 2D barcoded Matrix tube containing 10ug of transfection-ready, dried plasmid DNA (reconstitute with 100 ul of water).
Reconstitution Method:	<ol style="list-style-type: none"> 1. Centrifuge at 5,000xg for 5min. 2. Carefully open the tube and add 100ul of sterile water to dissolve the DNA. 3. Close the tube and incubate for 10 minutes at room temperature. 4. Briefly vortex the tube and then do a quick spin (less than 5000xg) to concentrate the liquid at the bottom. 5. Store the suspended plasmid at -20°C. The DNA is stable for at least one year from date of shipping when stored at -20°C.
RefSeq:	<u>NM_001081409.1</u> , <u>NP_001074878.1</u>
RefSeq Size:	6670 bp
RefSeq ORF:	3042 bp
Locus ID:	239510
UniProt ID:	<u>Q8CCJ9</u>
Cytogenetics:	15 D1- D2