

Product datasheet for **MG223857**

Kcng1 (NM_001081134) Mouse Tagged ORF Clone

Product data:

Product Type:	Expression Plasmids
Product Name:	Kcng1 (NM_001081134) Mouse Tagged ORF Clone
Tag:	TurboGFP
Symbol:	Kcng1
Synonyms:	AW536275; OTTMUSG00000016048
Mammalian Cell Selection:	Neomycin
Vector:	pCMV6-AC-GFP (PS100010)
E. coli Selection:	Ampicillin (100 ug/mL)



[View online »](#)

ORF Nucleotide Sequence:

>MG223857 representing NM_001081134
 Red=Cloning site Blue=ORF Green=Tags(s)

TTTTGTAATACGACTCACTATAGGGCGGCCGGAATTCGTCGACTGGATCCGGTACCGAGGAGATCTGCC
 GCC**CGGATCGCC**

ATGACCCTGTTACCGGGAGACAACCTCGCACTATGACTACAGCGCTCTAAGCTGCGCCTCAGACACCTCT
 TCCACCCGGCCTTCTTCCACAGCGCCAGGCCATCAAGGGCGTCTTACCGCAGGGCCCAACGATTGCG
 GCCGACGACGACCTGCACAGAGCTGCTCCCTTGGGACCGCAGGCGACAGATCATCATCAACGTGGGT
 GGCATCAAGTACTCACTACCTTGGACCACCTGGATGAGTTCCTACTGACGCGGCTGGGCCAGCTCAAGG
 CCTGCACCAACTTCGACGACATCCTGAGCGTGTGTGATGACTATGACGTAACCTGCAACGAGTTCTTCT
 CGACCGCAACCCCGAGCTTTTGGCACCATCCTCACCTTCTGCGGGCCGCAAGCTGAGGCTGCTTCGG
 GAGATGTGCGCCCTGTCTTCCAGGAGGAGCTGCTGTACTGGGCATCGCGGAGGACCACCTGGACGGCT
 GCTGCAAGCGCCGTACCTGCAGAAAATCGAGGAGTTTGTGAGATGATGGAGCGGAGGAGGAGGAGGA
 GCCGCTGGACAGCGAGGATCAAGAGAGTGAGGGTCCGTCGCCAGCGAGGGCCGCTGAGCCGCTGCATG
 AGGAGGCTGCGTGACATGGTGGAGCGGCCACACTCAGGGCTGCCTGGCAAGGTGTTTGCCTGCCTGTCCG
 TTCTGTTTGTACCGTCAACCGCGTCAACCTGTCTGTGACACCTGCCAGCCTGCGTGAGGAGGAGGA
 ACAGGGCCAGTGTCCCAGATGTGCCACAACGTCTTATCGTCGAGTCGGTGTGCGTGGGCTGGTTCTCC
 CTAGAGTTCCTGCTGCGCTTCACTCCAGGCACCCAGCAAGTTCCGCTTCTGCGGAGTCCGCTGACCTCA
 TCGACCTGGTGGCCATCCTGCCTACTATGTACACTGCTGGTGGATGGCGCTGCCTCCAGCCGCCGCAA
 GCCGAGCACCGGCAACAGCTACCTGGACAAGTTGGGCTAGTGTGCGGTGCTGCGGGCGCTGCGCATC
 CTCTACGTGATGCGTCTGGCCCGCATTCACTGGGGCTGCAGACACTGGCCCTCACGGCACGGCGCTGCA
 CGCGTGAATTCGGGCTTCTGCTGCTTTCTGTGTGTGGCCATGCGCCTTTTCCCCACTGCTCTATGT
 CATCGAGAATGAGATGGCAGACAGCCCCGAATACCAGCATCCCCGCTGCTACTGGTGGGCTGTCATC
 ACCATGACAACCGTAGGCTACGGAGACATGGTACCCCGGAGCACACCGGGTCAGGTGGTGGCTCTGAGCA
 GCATCCTCAGTGGCATCCTCCTCATGGCCTTCCCTGTACCTCCATCTTCCATACTTTCTCCGCTCTTA
 CCTGGAGCTCAAGCAGGAACAAGAACGGGTGCTGATCCGCCGGGCTCAGTACCTCATAAAACCAAGTCA
 CAGCTCAGTGGCATGTCCAGGACAGTACATCTGTTTGAAGTGCCTTTCAGACACTAGGGACAACA
 AC

AG**CGGACCG**ACGCGTACGCGGCCGCTCGAG - GFP Tag - GTTTAA

Protein Sequence:

>MG223857 representing NM_001081134
 Red=Cloning site Green=Tags(s)

MTLLPGDNSHYDYSALSCASDTSFHPAFFPQRQAIGVYRRAQRLRPQDDLHQSCSLGDRRRQIIINVG
 GIKYSLPWTTLDEFPLTRLGQLKACTNFDDILSVCDDYDVTCEFFFDNRNPGAFGTILTFLRAGKLRLLR
 EMCALSFQEELLYWGIAEDHLDGCKRRYLQKIEEFAEMMEREEEEPLDSEDESEGPSASEGRLSRCM
 RRLRDMVERPHSGLPGKVFACL SVLFVTVTAVNLSVSTLPSLREEEEQGQCSQMCHNVFIVESVCGWFS
 LEFLLRFIQAPSKFAFLRSPLTLIDLVAI LPPYVTL LVDGAASSRRKPSTGNSYLDKVLVLRVLRALRI
 LYVMRLARHSLGLQTLGLTARRCTREFLLLLFLCVAIALFAPLLYVIENEMADSPFTSIPACYWVAVI
 TMTTVGYGDMVPRSTPGQVVALSSILSGILLMAFPVTSIFHTFSRSYLELQEQERVLIRRAQYLKTKS
 QLSGMSQSDILFGSASSDTRDNN

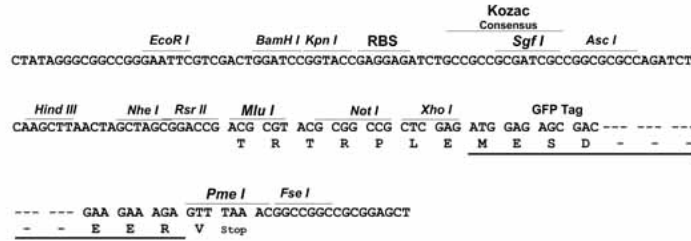
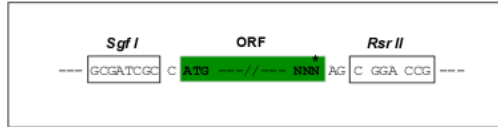
SGP**TRRRLE** - GFP Tag - V

Restriction Sites:

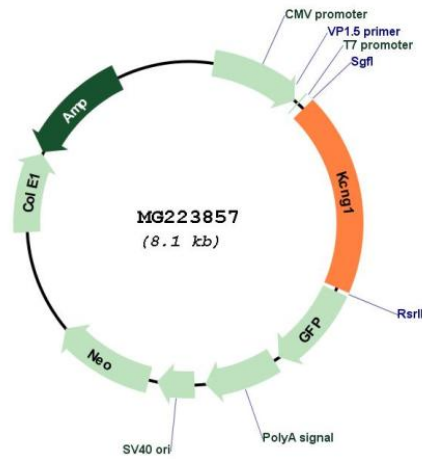
Sgfl-RsrII

Cloning Scheme:

Cloning sites used for ORF Shuttling:



Plasmid Map:



ACCN:	NM_001081134
ORF Size:	1542 bp
OTI Disclaimer:	The molecular sequence of this clone aligns with the gene accession number as a point of reference only. However, individual transcript sequences of the same gene can differ through naturally occurring variations (e.g. polymorphisms), each with its own valid existence. This clone is substantially in agreement with the reference, but a complete review of all prevailing variants is recommended prior to use. More info
OTI Annotation:	This clone was engineered to express the complete ORF with an expression tag. Expression varies depending on the nature of the gene.
Components:	The ORF clone is ion-exchange column purified and shipped in a 2D barcoded Matrix tube containing 10ug of transfection-ready, dried plasmid DNA (reconstitute with 100 ul of water).
Reconstitution Method:	<ol style="list-style-type: none">1. Centrifuge at 5,000xg for 5min.2. Carefully open the tube and add 100ul of sterile water to dissolve the DNA.3. Close the tube and incubate for 10 minutes at room temperature.4. Briefly vortex the tube and then do a quick spin (less than 5000xg) to concentrate the liquid at the bottom.5. Store the suspended plasmid at -20°C. The DNA is stable for at least one year from date of shipping when stored at -20°C.
RefSeq:	NM_001081134.2
RefSeq Size:	2316 bp
RefSeq ORF:	1545 bp
Locus ID:	241794
UniProt ID:	A2BDX4
Cytogenetics:	2 H3
Gene Summary:	Potassium channel subunit that does not form functional channels by itself. Can form functional heterotetrameric channels with KCNB1; modulates the delayed rectifier voltage-gated potassium channel activation and deactivation rates of KCNB1.[UniProtKB/Swiss-Prot Function]