

## Product datasheet for **MG223836**

### Whrn (NM\_028640) Mouse Tagged ORF Clone

#### Product data:

Product Type:	Expression Plasmids
Product Name:	Whrn (NM_028640) Mouse Tagged ORF Clone
Tag:	TurboGFP
Symbol:	Whrn
Synonyms:	1110035G07Rik; AW122018; AW742671; C430046P22Rik; Dfnb3; Dfnb31; Ush2; Ush2d; w; wi
Mammalian Cell Selection:	Neomycin
Vector:	pCMV6-AC-GFP (PS100010)
E. coli Selection:	Ampicillin (100 ug/mL)



[View online »](#)

ORF Nucleotide  
Sequence:

>MG223836 representing NM\_028640  
Red=Cloning site Blue=ORF Green=Tags(s)

TTTTGTAATACGACTCACTATAGGGCGGCCGGGAATTCGTCGACTGGATCCGGTACCGAGGAGATCTGCC  
GCC**CGGATCGCC**

ATGAACGCACAGCTGGACGGCCTGTCGGTGAGCTCGTCTCCACCGGCTCGCTGGGCTCGGCGCGCGCG  
CGGCGGGCGGCGGGGGCGCGGGTTGCGGCTGCTGTCTGCCAACGTGCGCCAGCTGCACCAAGCGCT  
CACGGCGCTGCTGAGCGAGCCGAGCGGGAGCAGTTCACTCACTGCCTAACCGCTACCACGCGCGCCGC  
AACGTCTTCGACCTGGTGCACCCCTGCGGCTCTGCTGGACAGCCCGTCAAGCGGCGTCTGCTGCCCA  
TGCTGCGTCTGGTCATCCCGCGCTCCGACCAGCTGCTCTTCGACCAGTACACGGCCGAGGGCCTCTACCT  
GCCAGCCACCACCCCTACAGGCAGCCCGCTGGGCGCTCCCGACGGCGCGGGGCCCGGGAGGTGCGA  
CTCGTGAGCTGCGGCGGCCAAGGCCACGAGGGCTTGGGCTTACGATCCGCGGGGGCTCGGAACACG  
GCGTGGGCATCTACGTGTCTTAGTGGAGCCGGGCTCCCTGGCAGAGAAGGAAGGTTGCGGGTCTGGGA  
CCAGATTCGCGGCTAACGATAAATCTTAGCCGGGTACCCACGCGGAGGCTGTCAAGGCTCTCAA  
GGCTCAAAGAAGCTGGTGTCTGTATACTCAGCTGGGCGTATCCAGGGGGCTATGTGACCAACCACA  
TCTACACCTGGGTGGACCCACAGGGTCAAGCACATCCCCCTCCCTCCAGCCTGCCCCAGCCCATGGCAG  
CACCTGAGACAGCGTGAAGATGACCGAAGGAGTACCCTCCACCTCCTGCAGAGTGGAGATGAGAAAAAG  
GTGAACCTGGTGTGGGGGACGGCCGGTCTTGGGCTCACGATCCGAGGTGGAGCAGAGTACGGCCTTG  
GCATTTACATCACTGGTGTGGACCCAGGCTCTGAAGCAGAGAGCAGCGGCTCAAGGTTGGAGACCAGAT  
TCTGGAGGTGAATGGGCGGAGCTTTCTCAACATCTGCATGATGAGGCAGTGAAGTGTCAAGTATCC  
CGGCACCTCATCTGACGGTGAAGGACGTGGAAGGCTGCCACGCACGTACCACCGTGGACCAGACCA  
AGTGGATCGCCAGTTCGCGGATCGGGAAAGCGTCCGCAACTCAGCAGGGTTTCCAGGGACCACACAGA  
AGAAGGGACAAGCAAGCCAGGATTTTACAAGGGCCAGCCGGCTCCAGGTGACCCCTGAGCAGCCTGGGG  
AATCAGACTCGTGCCTGCTGGACGACCAAGCCAGGCACCTGCTGACAGAGCAGGAGCGGCCACCATGA  
TGTAACCTGGCCAGTACCGTGGTGGCACCATCTGTGGAGGCCATGGTCATGGCACTGTTTGGATT  
GCTCAACACACACGCAAGTTCTCACTCTGTCTGAGGTGAGAAGCATCATCTCACCCCAAGACCTGGAC  
CGCTTTGACCACCTGGTCTGAGGCGGAGATCGAGTCTATGAAGGCGAGGCAGCCCCCGGCCCGGGG  
TTGGAGACACGTATTCATGGTTTCTACAGCGACACAGGCTCATCCACAGGCAGCCACGGCACCTTAC  
AACCGTCAGCTCGCCAGGAATACATTAGACCTGGAAGGAACCGGTGAGACCACCAGGGCAGCACCAAC  
GCTCTCCCGATGTGTCTGTGGATGATGTCAAATCCCCCTCAGAAGATCTGCCTGGTATCAAGCCACCTC  
CTCCCCACCACCCTGGCTCAAGGTATGACCGCTTGTGGCCAGCCACGGAAGCCAGGGAGGGAGGA  
CCCCGCACCTCTGTCTTCTGCTGCCACTCAGGATTGTCTTCTCAGCACCACGGAACCGCAGCCCGCCG  
CCAGGGACTGCTCCCACTCCGGGACCTTCTCAGCACAGGACTCTCCCTCCTCCCCATTATGCCTCCA  
TCTCCATGCCAACCCAGTTCAGAAAGCCGCTGGACACCCACCTGGCCCTGGTTAACCAGCACCCAT  
CGGCCCTTCCCTCGAGTCCAGTCCCACCTCACCTGAAGAGCCCTCCTGCAGAGACCCAGGAGCTGGG  
GCCTGCCTTCCACCACATCACCTCTGAACACCTGACGCCGTGGGTGCAAACCAGCACTTGTCTGG  
TGGAGGTGACCGTCCGGACAGTATCTGATGTGAATGAAGTGGGGCTCTGCCCAGACTCGCACAGC  
CTCCACACTCTCAGCTCTCAGACAGTGGGCAGACCCCTGAGCGAGGACAGTGGCGTGGATGCCGGGGAG  
ACGGAGGCCAGCACCTCAGGCCGAGGCAGACAGACAGCATCCGCTAAGAACAAGAATGGCAAGGAGCAGC  
CCCGGACGGAGAGACCGCGGAGGGTGCCAACAACCTCCCGCCTGCTGGAGCCAACGTCCACCCTGGT  
CCGTGTGAGGAAAAGTGCAGCCACACTGGGCATCGCCATTGAGGGCGGTGCCAACACAGCCAGCCTCTG  
CCCAGGATCGTCACAATTCAGCGAGGAGGTTCTGCCATAACTGTGGACAGCTCAAGGTGGGCCACGTAA  
TTCTGGAAGTGAATGGGCAGACACTTCGGGTAAGGAGACAAGGAGGCCGCCAAATCATCGCTGAGGC  
CTTCAAGACCAAGGAGAGAGACTACATCGACTTCTGGTCACTGAGTTCAACGTGATGCTC

AGCGGACCGACGCGTACGCGGCCGCTCGAG - GFP Tag - GTTTAA

Protein Sequence: >MG223836 representing NM\_028640  
 Red=Cloning site Green=Tags(s)

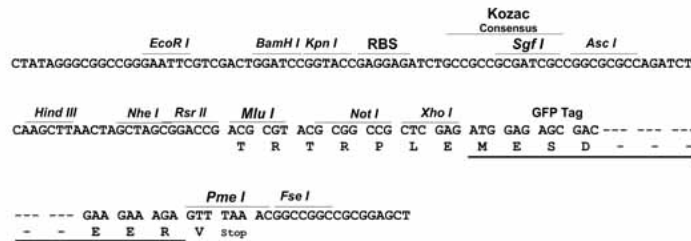
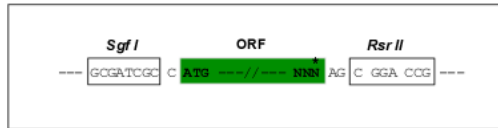
MNAQLDGLSVSSSTGSLGSAAAAGGGGGAGLRLL SANVRQLHQAL TALL SEPEREQFTHCLNAYHARR  
 NVFDLVRTLRVLLDSPVKRRLPLMLRLVIPRSDQLLFDQYAEGLYLPATTPYRQPAAWAPDGAGPGEVR  
 LVSLRRAKAHEGLGFSIRGGSEHGVIYVSLVEPGSLAEKEGLRVGDQILRVNDKSLARVTHAEAVKALK  
 GSKKLVLVSVSAGRIPGGYVTNHIYTWVDPQGRSTSPSSLPQPHGSTLRQREDDRRSTLHLLQSGDEKK  
 VNLVLGDGRSLGLTIRGGAIEYGLGIYITGVDPGSEAESSGLKVGQDILEVNGRSFLNILHDEAVKLLKSS  
 RHLILTVDVGRPLPHARTTVDQTKWIASRRIGESVANSAGFPGDHTEEGT SKPGFYKGPAGSQVTLSSLG  
 NQTRALLDDQARHLLTEQERATMMYYLAQYRGGTISVEAMVMALFELLNTHAKFSLLSEVRSIISPQDL  
 RFDHLVLRREIESMKARQPPGPGVGDYSMVSYSDTGSSTGSHGTSTTVSSARNTLDLEGTGETTQGSTN  
 ALPDVSVDDVKSPEDLPGIKPPPPPPPLAQGHDRLLGQPRKPGREDPAPLSSAAHSGIVFSAPRNRSP  
 PGTAPTGPSSAQDSSSPIYASISHANPSSRKPLDTHLALVNQHPIGPFPRVQSPPHLKSPPAETPGAG  
 ACLPPSPSEHPDAVGANQHFVLVEVHRPDSDPVNEVRALPQTRTASTLSQLSDSGQTLSEDSGV DAGE  
 TEASTSGRGRQTASAKNKGKEQPRTERTAEGANKPPGLEPTSTLVRVRKSAATLGIAIEGGANTRQPL  
 PRIVTIQRGSSAHNCGLKVGHVILEVNGQTLRGKEHKEAAQIIAEAFKTKERDYIDFLVTEFNVML

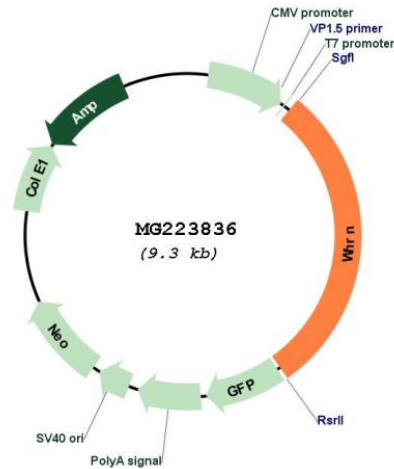
SGPTRRRLE - GFP Tag - V

Restriction Sites: SgfI-RsrII

Cloning Scheme:

Cloning sites used for ORF Shuttling:



**Plasmid Map:**


**ACCN:** NM\_028640

**ORF Size:** 2721 bp

**OTI Disclaimer:** The molecular sequence of this clone aligns with the gene accession number as a point of reference only. However, individual transcript sequences of the same gene can differ through naturally occurring variations (e.g. polymorphisms), each with its own valid existence. This clone is substantially in agreement with the reference, but a complete review of all prevailing variants is recommended prior to use. [More info](#)

**OTI Annotation:** This clone was engineered to express the complete ORF with an expression tag. Expression varies depending on the nature of the gene.

**Components:** The ORF clone is ion-exchange column purified and shipped in a 2D barcoded Matrix tube containing 10ug of transfection-ready, dried plasmid DNA (reconstitute with 100 ul of water).

**Reconstitution Method:**

1. Centrifuge at 5,000xg for 5min.
2. Carefully open the tube and add 100ul of sterile water to dissolve the DNA.
3. Close the tube and incubate for 10 minutes at room temperature.
4. Briefly vortex the tube and then do a quick spin (less than 5000xg) to concentrate the liquid at the bottom.
5. Store the suspended plasmid at -20°C. The DNA is stable for at least one year from date of shipping when stored at -20°C.

**RefSeq:** [NM\\_028640.1](#), [NP\\_082916.1](#)

**RefSeq Size:** 4056 bp

**RefSeq ORF:** 2724 bp

**Locus ID:** 73750

**UniProt ID:** [Q80VW5](#)

**Cytogenetics:** 4 33.97 cM

**Gene Summary:**

This gene encodes a protein required for elongation and actin polymerization in the hair cell stereocilia. The encoded protein is localized to the cytoplasm and co-localizes with the growing end of actin filaments. Mutations in this gene have been linked to deafness. Alternative splicing results in multiple transcript variants. [provided by RefSeq, Feb 2013]