

Product datasheet for **MG223819**

Gdf11 (NM_010272) Mouse Tagged ORF Clone

Product data:

Product Type:	Expression Plasmids
Product Name:	Gdf11 (NM_010272) Mouse Tagged ORF Clone
Tag:	TurboGFP
Symbol:	Gdf11
Synonyms:	BMP-11; Bmp1; Bmp11
Mammalian Cell Selection:	Neomycin
Vector:	pCMV6-AC-GFP (PS100010)
E. coli Selection:	Ampicillin (100 ug/mL)
ORF Nucleotide Sequence:	>MG223819 representing NM_010272 Red=Cloning site Blue=ORF Green=Tags(s)

TTTTGTAATACGACTCACTATAGGGCGGCCGGGAATTCGTCGACTGGATCCGGTACCGAGGAGATCTGCC
 GCC**CGATCGCC**

ATGGTGTCTCGGGCCCCGCTGCTGCTGGGCTTCTGCTCCTCGCCCTGGAGCTGCGGCCCGGGGGAGG
 CGGCCGAGGGCCCCGGCGGGCGGGCGGCGAGCGGGCGGGCGGGGTGGGGGGAGCGCTCGAG
 CCGGCCGGCCCCGCTCCGCTCCGCCGAGCCGGACGGCTGCCCGTGTGCGTGTGGCGGCAGCACAGCCG
 GAGCTGCGCCTAGAGAGCATCAAGTCGAGATCCTGAGCAAAGCTCGGGCTCAAGGAGCGCCCAACATCA
 GCCGGGAGGTAGTGAAGCAGCTGCTGCCAAGGCGCCCGCTGCAGCAGATCCTGGATCTGCACGACTT
 CCAAGGCGACGCGCTGCAGCCTGAGGACTTCTTGAAGAGGACGAGTACCACGCTACCACCGAGACGGTC
 ATAAGCATGGCCCAGGAGACGGACCCTGCAGTGCAGACAGATGGCAGCCCTCTCTGCTGTATTTCCACT
 TCAGCCCCAAGGTGATGTTACCAAGGTAAGGCTGAAAGGCTTAAAGGCTGAAAGGAGGGAGCGAGGGG
 GGTGGAGGCCGGCGTCACATCCGTATCCGTTCACTAAAGATTGAGCTACACTCACGTTCCGGCCACTGGC
 AGAGCATCGACTTCAAGCAAGTGTACACAGCTGGTTTCGCCAGCCACAGAGCAACTGGGAATCGAGAT
 CAACGCCTTTGATCCAGCGGCACAGACCTGGCTGTCACTCCCTGGGGCCAGGAGCTGAGGGGCTGCAT
 CCTTTTCATGGAGCTTCGAGTCTAGAGAACACGAAAAGTCCCGCGGAACCTAGGCCCTGGACTGCGATG
 AACACTCGAGTGAGTCCCGCTGCTGCCGATATCCTCTCACAGTGGACTTTGAGGCTTTTGCTGGGACTG
 GATCATCGCACCTAAGCGCTACAAGGCCAACTACTGCTCCGGCCAGTGCGAATACATGTTTCATGCAAAAG
 TATCCACACACCCACTTGGTGCAACAGGCCAACCAAGAGGCTCTGCTGGGCCCTGCTGCACCCCTACCA
 AGATGTCCCAATCAACATGCTCTACTTCAATGACAAGCAGCAGATTATCTACGGCAAGATCCCTGGCAT
 GGTGGTGGATCGATGTGGCTGCTCC

ACGCGTACGCGGCCGCTCGAG - GFP Tag - GTTTAA



[View online »](#)

Protein Sequence: >MG223819 representing NM_010272
 Red=Cloning site Green=Tags(s)

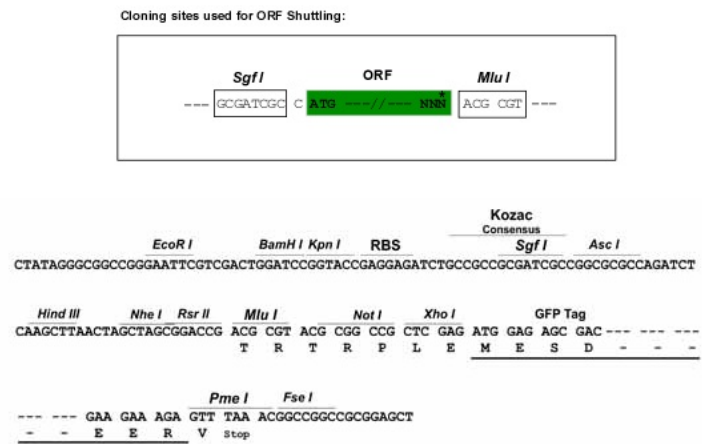
```
MVLAAPLLLGFLLLALRLRPRGEEAEGPAAAAAAAAAAGVGGERSRPPAPSAPPEPDGCPVCVWRQHSR
ELRLESIKSQILSKLRLKEAPNISREVVKQLLPKAPLQQILDLDLHDFQGDALQPEDFLEEDEYHATTETV
ISMAQETDPAVQTDGSPLCCHFHFSPKVMFTKVLKAQLWVYLRVPRPATVYVYLQILRLKPLTGEGTAGGG
GGRRRHIRIRSLKIELHSRSGHWQSIDFKQVLHSWFRQPQSNWGIEINAFDPSGTDLAVTSLGPGAELH
PFMELRVLENTKRSRRNLGLDCDEHSSESRCCRYPLTVDFEAFGWDWIIAPKRYKANYCSGQCCEYMFQK
YPHTHLVQQANPRGSAGPCCTPTKMSPINMLYFNDKQQIIYGKIPGMVVDRCGCS
```

TRTRPLE - GFP Tag - V

Chromatograms: https://cdn.origene.com/chromatograms/ja2656_h05.zip

Restriction Sites: SgfI-MluI

Cloning Scheme:



ACCN: NM_010272

ORF Size: 1215 bp

OTI Disclaimer: The molecular sequence of this clone aligns with the gene accession number as a point of reference only. However, individual transcript sequences of the same gene can differ through naturally occurring variations (e.g. polymorphisms), each with its own valid existence. This clone is substantially in agreement with the reference, but a complete review of all prevailing variants is recommended prior to use. [More info](#)

OTI Annotation: This clone was engineered to express the complete ORF with an expression tag. Expression varies depending on the nature of the gene.

Components: The ORF clone is ion-exchange column purified and shipped in a 2D barcoded Matrix tube containing 10ug of transfection-ready, dried plasmid DNA (reconstitute with 100 ul of water).

Reconstitution Method:

1. Centrifuge at 5,000xg for 5min.
2. Carefully open the tube and add 100ul of sterile water to dissolve the DNA.
3. Close the tube and incubate for 10 minutes at room temperature.
4. Briefly vortex the tube and then do a quick spin (less than 5000xg) to concentrate the liquid at the bottom.
5. Store the suspended plasmid at -20°C. The DNA is stable for at least one year from date of shipping when stored at -20°C.

RefSeq: [NM_010272.2](#)

RefSeq Size: 1811 bp

RefSeq ORF: 1218 bp

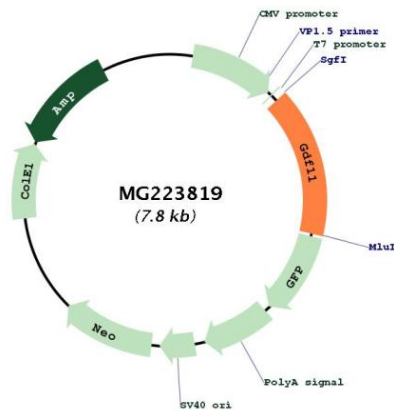
Locus ID: 14561

UniProt ID: [Q9Z1W4](#)

Cytogenetics: 10 D3

Gene Summary: This gene encodes a secreted ligand of the TGF-beta (transforming growth factor-beta) superfamily of proteins. Ligands of this family bind various TGF-beta receptors leading to recruitment and activation of SMAD family transcription factors that regulate gene expression. The encoded preproprotein is proteolytically processed to generate each subunit of the disulfide-linked homodimer. This protein plays a role in the development of the nervous and other organ systems, and may regulate aging. Mice lacking a functional copy of this gene exhibit impaired anteroposterior patterning and other developmental defects. [provided by RefSeq, Aug 2016]

Product images:



Circular map for MG223819