

Product datasheet for **MG223805**

Zc3h13 (NM_026083) Mouse Tagged ORF Clone

Product data:

Product Type:	Expression Plasmids
Product Name:	Zc3h13 (NM_026083) Mouse Tagged ORF Clone
Tag:	TurboGFP
Symbol:	Zc3h13
Synonyms:	2600010B19Rik; 3110050K21Rik; 4930570G11Rik; C87618
Mammalian Cell Selection:	Neomycin
Vector:	pCMV6-AC-GFP (PS100010)
E. coli Selection:	Ampicillin (100 ug/mL)
ORF Nucleotide Sequence:	>MG223805 representing NM_026083, codon optimized . Due to the complexity of NM_026083, the ORF clone is codon optimized for mammalian Expression. The nucleotide sequence differs from the reference sequence, yet the amino acid sequence remains identical.

Red=Cloning site Blue=ORF Green=Tags(s)

TTTTGTAATACGACTCACTATAGGGCGGCCGGGAATTCGTCGACTGGATCCGGTACCGAGGAGATCTGCC
GCC**CGGATCGCC**

ATGAGCAAGATTAGGCGAAAAGTCACTGTGGAGAATACAAAAACCATCTCTGAAAGCACCAGCAGGAGGC
CAAGTGTGTTTGAACGCCTCGGCCCATCCACAGGCTCTACTACCGAGACTCAGTGTAGGAACTGGCTTAA
AACTGGGTCTGTTGTACGGGAACACCTGCCGGTTTCATCCATGGTCTAGCCCCACGGGGTAAAGGCTAC
AGTTCTAACTATAGAAGATCTCCTGAGAGGCCACCGGCGACCTCCGCGAAAGAAATGAAGAAACAAGCGAC
AGGACGTGGACAGTGAGTCACAGAAGCGGAATACCGAAGAACCAAGCAGCCCCGTGAGAAAGGAATCAAG
CAGGGGCCGGCACCGGGATAAGGAAGATATCAAAATCGTGAAAGAGCGCACCCCCGAGTCTGAAGAAGAG
AATGTGGAATGGGAGACGAATCGCGACGATAGCGATAACGGTGATCACTACGACTACGTTACGGAAC
TTAGTCTTGAAATGAAGCGACAGAAGATTCAGAGGGAGCTGATGAAATTGGAACAGGAAAATATGGATAA
GAGGGAAGAAATAATTATTCAGAAGGAGGTGAGCCCCGAAGTGGTGCGCAGCAAACCTGAGCCCCCTCTCT
TCACTGAGAAAAGAGCTCCAAATCCCCAAAGCGCAAATCTTACCCAAAGCCTCCTCTGCTGGGAAGAAAAG
AACGAAAAGCGGCCGTGCTGGCCTCCCCCTCCTGGATCAGCAGAGGAATAGTAAAGGGAACCAAGTCTAA
GAAAAGGGGCTCGGACACCTAGCCCCCACCCCCATCCTGGAAGACATCATCCTTGGTAAAAAGTAT
AAGGAGAAGTACAAAGTCAAAGACCGAATCGAAGAAAAACCCCGCATGGAAAGGATCGCGGAAGAGACT
TTGAGAAGCAGAGAGAGAAAACGGGATAAACCTCGCTCAAGTTCTCCTGGGCAGCACACAGCCACTTTT
AAGTAGACATCACAGCTCATCTCCAGAGCGGCAGCTCTATCCAGCGGCACAGTCCAGTCCCCGGAGG
AAAAGGACACCATCCCCGTCTATCAGAGAACCCTGACTCCTAGCCTGAGCGGTCGGCTAGTCCATACC



[View online »](#)

CTACTCACTGTCTCTCCAGCCCTCAGCGAAAGCAGAGCCCTCCTCGACACCCGAGCCCTATGAGAGAAAA
 GGGGCGACATGACCATGAGCGCACATCCAGAGCCATGACAGGAGACACGAAAGGAGAGAGGAGACACGC
 GGCAAGCGAGATCGGGAGAAGGACACCCGCGAGGAGCGGAGTCCGAGCACGACCACCGGGACGATAGGG
 AGCCCAGGGACAGTCCGACAGGAGGGATACTAGAGACAGACGAGAGCTGCGAGACTCCCGGGACATGAG
 AGATTCTCGAGAGATGCGGGACTACTCTAGAGACGCCAAAAGAGAGCCGAGATCCAAGAGACAGTCGATCT
 GCTCGAGATGTCCATGATTACCGGGACCGAGAGGCCCGGATGCTCACGCTAGGGACGTGAGAGACGCGC
 GCGATGCTAGAGATGCCCGGGACGCAAGAGATATCAGAGATGTACGGGATGTCCGGGACGTCCGGGACGT
 GAGAGACGTTAGAGATGTTTCGCGACGTGAGGGACGTACGAGACGTCAGAGACGCAAGAGACGTGCGCGAC
 GTGCGGGACGCTCGAGACGTGCGCGACGTGCGCGATGTAAAGAGACGGACACAGGAAGGAGGACGTCTATC
 AGGAAGAAGCCAGATCCTACGGGCGAAATCACCTGAGAGAAGAGTCAAGCCGGGTTGAGCTGAGGAACGA
 CTCTCGCAATGAGAGTCCGAGCGAGATTCGCAACGATAGGATGGGAGGTCACGAGGTCGGGGCCCTGAA
 CTCCCTGAGAAGGGTCCCGAGGTACACGAGGAAGCCAGATGGACTCTCATTCTGGTCTAACTACC
 ACGATTCTGGGAGACAAGATCCTCATACCCGAAACGGGACAGGTATCCTGAACGCGACACGAGGGACCC
 AGCACGCGACAGTAGTTTCGAACGAAGGCACGGGAGCGCGACAGGAGGGATAACAGAGACGGGACCAG
 AGGCCGTCTCACCCATTTCGCCACAGGAAGATCTGAGGAGCTCGAGAGGGACGAGCGGAGAGAAGAGC
 GGAGGATCGACAGAGTGGATGAACGACGAGACGACCGGGTGAAGGATCGCGACCGGGATCCGGAGAGAGA
 GCGGGAGCGAGAAAGGGAAGGGAAACGCGAAAAGAGAAAAGGAGCGGGAGCGGAGCTGGAGAGAGAGAGA
 GCCCGCGAGAGAGAGCGGAAACGGGAAAAGGAACGGGAGCGCGAAAAGGAGCGGAAACGCGATCAGAGAG
 ATCGAGATCATGATAGGGAGCGGGAGCGGGAGCGGGAGAGGGAACGGGAAAAGGAGCGGGAACGGGAAAAG
 GGAGGAGCGAGAGAGAGAAAAGGGAACGGGAGAGAGAGAGGGAACGCGAGAGAGAGCGAGAGAGAGAGAGG
 GAACGGGAGCGAGAGCGGAAAGGGAACGCGCTCGAGAACGCGAAAAGGGAACGAGAAAGACAGAGAGAGT
 GGGAGGACAAAGATAAAGGGAGAGACGACCGCGGGGAAAAACGCAAGACATCCAGTCCGGGAGGACCG
 GATTCACAGACTCTCACGAAGAGCGGAAGATAAAAAGCGGTATAGAAAACGAGGGACGTCGCTCACCC
 CGGCAGTCTCAAAAAGGAGAGCGGGAGCATTCCCGGATTCCGATACCTATCACTCAGGCGATGATAAGA
 ACGAAAAGCACCGCTGTTGTCCCAAGTCGTAGGCCACAGGAAAAGCCGAGCCTCTCCCTCTCACCT
 CACTGAAGACCGACAAGGACGGTGAAGGAAGAGGACCGAAAATCCGAACGGAAGGAATCCTCTCGAAGG
 TATGAGGAGCAAGAACTGAAGGAGAAAATTGTCATGTGGAGACAGACAGAGAGAGCAAGCCGAATCAGTCG
 ACAGCAGCCGCTGCGCGCACAGGACCTGTTGTCCCATAGGCAGGCTGAGGACAGAGATAGAGATGGCTC
 CGACCCGCTCACGATGAGAAGAAAAAGCCAAGGCCCAAGAGCCCGTGAAGAAAAAAGAAAGAG
 GACGTGGGCGTGGAGCGAGGAAACCTGGAACACATGAAGATTCCAGGTCTTCAGCCCTAAGAAAGGTC
 AGAAGAAGAACAATAGAGAAGAAACGAAAGCGCTCAAGGGCGACAGTATGTCAGCGACGAGGAGGC
 CGCCCTCAAAAACAAGAAGAAGCGCGGACCCCGCACCCCTCTGGCAATAAAGGAGGAGTTGGCCGAC
 ATCAGCACCGACAAGGACGGCTACTGGAGGACCCATTGAAAAAAGAAAACACCGCTTTTAGCGACTGGT
 CTGATGAAGATGTGCCTGATAGGACAGAGGGCCTGGAGGCCGAGCACACAGCAGCAACAGCCACCCCTGG
 TTCCACTCCGAGTCTTTGTCTAGCTTGCTCCCTCCTCCACCACCCGTGGCCGCTGCTTCCACCGCTGCC
 ACTGCCCTTGCTCCAGTGCCGTGAGCGCCACAACGTCCGCTACATCCAGCTCAAGCGCAGCAACAAGTA
 ACACCAACGGGTCAGAGGACAGCCATCGCAAGTGTACAGGGCCCGGGGGAGAAGGTCGAGGTATCCCA
 CGTGACACTGGAGGATACTCCGCACAGGAAGCTGGTGGATCAGAAAACGATCTTCCAGCTGGGCTCAAAC
 GCTCCACAGATCCCACACCTCCGGAAGACTGAGGTCCCCATCCAATGACAGTGGCAGCAGATCAGGGG
 ATGATCAGGGTAGCCGCAAGAGGGTACTGCACTCAGGATCTCGCGACCGAGAGAAAACAAAAGCCTGGA
 GATAACAGGCGAAAAGAAAGAGTAGGATTGATCAGCTGAAAAGAGGGGAGCCTAGCCGGAGCACGAGTAGT
 GACCGGCAGGATAGCCGAAGTATAGCTCTAGACGCTCCTCCCCTGAGTCAGACCGCCAGGTCCATAGCC
 GGTGAGGATCCTTTGACAGCCGAGATCGGTTGACGAAAGGGACCGGTACGAACATGATAGAGAACGCGA
 GCGCGACCGGAGGACCCGAGACAGCGGGAGTGGGACCGCGAGGCCGAGAAAAGATGGCCCCGCACACGG
 GATAGGGACCGGCTGCGAGAGAGGGACCGGACCGGGACAGCAAGGGACCTGGACCGAGAACGGGAGC
 GGCTCATTTAGACCCTATGGAACGCGACAGAGAACGGGAGAGGACCTTTGAGACTTCTCAGCTTGAGAG
 TGGCAAAAAGATCCGAAGTCAAATCTGAGAGCGAGCACGAGAGGGACCTGGAAGGAAGTTCAAGAGATTCA
 GTAGCCTTGATAAAGAAAGAATGGATCGAGACTTGGGCTCAGTTCAGGGTTTTGAAGATGTGTCCAAGG
 CAGAGCGCACCGAATCATTGGAGGGGACGACGAATCCAAGCTGGACGACGCTCACTCTCTGGGCGAGTGG
 AGCAGGAGAAGGCTACGAACCCATCTCAGATGACGAGCTGGACGAAATACTGGCCGGCGATGCTGAGAAG
 CGAGAGGACCGAGGAAGAAGAGAAGATGCCCGACCTTTGGATGTGATAGATGTGGATTGGTCTGGAC
 TCATGCCTAAGCACCTAAGGAGCCTAGGGAGCCCGGTGCAGCCCTGCTGAAGTTACACCCGGAGCCGT

GCTTCTGCGAGTGGGTATAAGTAAAAAATTGGCTGGCTCCGAATTGTTACCAAGGTCAAGGAGACTTGT
 CAACAGCTTGTGGAAAAGCCCAAGGACGCCGATTCCCTCTTCGAGCACGAACTGGGTGCCCTCAATATGG
 CCGCCCTTCTGCGCAAGGAAGAGCGAGCATCCCTTCTGAGCGACCTTGGGCCTTGTGCAAAGCTCTGTG
 CTTTAGACGGGACAGCGCCATTAGAAAGCAGCTCGTCAAAAACGAAAAGGTACCGTGAACAGGCGTAC
 ACCAACACCCCTATGGTGGATAACGAACTCTTGCGCCTCAGCTTGCGCCTTTTAAAGAAAAAGCTACTT
 GTCATGCCCTGGTCAAGAGAAGACAGAAGATGGCAAGCTGGGACCTTGTCCATACAACAGGAACCTTTG
 CGTTAGC

ACGCGTACGCGGCCGCTCGAG - GFP Tag - GTTTAA

Protein Sequence:

>MG223805 representing NM_026083
 Red=Cloning site Green=Tags(s)

MSKIRRKVTVENTKTISESTRRPSVFERLGPSTGTTETQCRNWLKSGSLYGNTRCFIHGPSRPGKGY
 SSNYRRSPERPTGDLRERMKNRQDVSESQKRNTTEPSSPVRKESSRGRHRDKEDIKIVKERTPESEEE
 NVEWETNRDSDNGDINYDYVHEL SLEMKRQKIQRELMKLEQENMDKREEII IQKEVSPEVVRSKLSPSP
 SLRKSSKSPKRKSSPKASSAGKKERKAAYVASPLLDQQRNSKGNQSKKKGPRTPSPPPPILEDIILGKKY
 KEKYKVKDRIEEKPRDGKDRGRDFEKQREKRDKPRSSSPGQHSPLSSRHHSSSSQSGSSIQRHSPSPRR
 KRTPSPSYQRTLTPSLRRSASPYPHCLSSPQRKQSPRRHRSPMREKGRHDHERTSQSHDRRHERREETR
 GKRDRDKTREERESEHHRDDREPRDSRDRDRDRDRRELDRSRMDRSREMRDYSRDAKESRDPDRSRS
 ARDVHDYRDREARDAHARDVRDARDARDARDARDIRDVRDVRDVRDVRDVRDVRDVRDVRDARDVRD
 VRDARDVRDVRDVRDGHKEDVYQEEARSYGRNHLREESSRVELRNDNRNE SRSEIRNDRMGRSRGRGPE
 LPEKSGRTRGSMQSHSSGSNYHDSWETRSSYPEDRYPERDTRDPARDSSEFERRHGERDRRDNREERDQ
 RPSSPIRHQGRSEELERDERREERRIDRVDERDDRVDRDRDRERERERERERERERERERERERERER
 ARERERERERERERERERERDQRDRDHDRERERERERERERERERERERERERERERERERERERER
 ERERERERERARERERERQREWEDKDKGRDDRREKREDIHRVEDRIPRDSHEERKSKKRYRNEGSPSP
 RQSPKRRREHSPDSPTYHSGDDKNEKHLRLSQVVRPQESRSLSPSHLTEDRQGRWKEEDRKSERKSSRR
 YEEQELKEKLSGDRQREQAESVDSSRVRAQDLLSHRQAEDRDRDGSRAHDEKKAAPKPKVKKKKEE
 DVGVERGNLETHEDSQVFSPPKQKQKKNIEKKRKRSGSDVSDEEAAPQNKKKRGPRTPLAIKEELAD
 ISTDKDGVLLEDPLKENTAFSDWSEDEVDRTEGLEAEHTAATATPGSTPSPLSSLLPPPPPVAAASTAA
 TALASSAVSATTSSSSAATSNTNGSEDSHRKCHARGEKVEVSHVTLEDTPHRKLVQKRSSSLGNS
 RSHRSHTSGRLRSPNSAHRSGDDQGSRKRVLHSGSRDREKTKSLEITGERKSRIDQLKRGPSRSTSS
 DRQDSRSHSSRRSSPESDRQVHSRSGSFDSDRDLQERDRYEHDRERERDRRDRPRQREWDRAEKEWPRTR
 DRDRLRERDRDRDRRDLDRERERLISDPMERDRERERTFETSQLESGKRSEVKLESEHERDLEGSSRDS
 VALDKERMDRDLGSVQGFEDVSKAERTESLEGDDESKLDDAHSLSGSGAGEGYEPISSDELDEILAGDAEK
 REDQQEEEKMPDPLDIVDWDWGLMPKHPKEPREPGAALLKFTPGAVLLRVGISKKLAGSELFTKVKETC
 QQLVEKPKDADSLFEHEL GALNMAALLRKEERASLLSDLGPCCKALCFRRDSAIRKQLVKNEKGTVKQAY
 TNTPMVDNELLRLSLRLFKKKATCHAPGQEKTEDGKLGPCSIQQELCVS

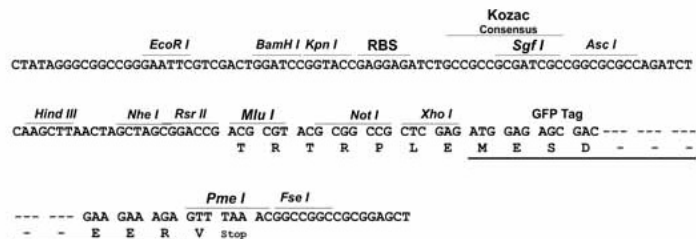
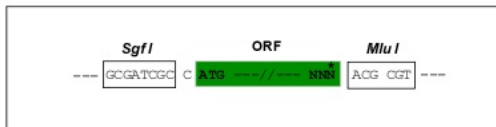
TRTRPLE - GFP Tag - V

Restriction Sites:

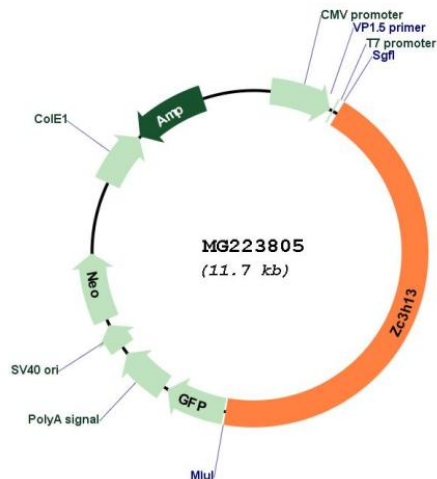
Sgfl-MluI

Cloning Scheme:

Cloning sites used for ORF Shutting:



Plasmid Map:



ACCN: NM_026083
 ORF Size: 5187 bp

OTI Disclaimer:	The molecular sequence of this clone aligns with the gene accession number as a point of reference only. However, individual transcript sequences of the same gene can differ through naturally occurring variations (e.g. polymorphisms), each with its own valid existence. This clone is substantially in agreement with the reference, but a complete review of all prevailing variants is recommended prior to use. More info
OTI Annotation:	This clone was engineered to express the complete ORF with an expression tag. Expression varies depending on the nature of the gene.
Components:	The ORF clone is ion-exchange column purified and shipped in a 2D barcoded Matrix tube containing 10ug of transfection-ready, dried plasmid DNA (reconstitute with 100 ul of water).
Reconstitution Method:	<ol style="list-style-type: none">1. Centrifuge at 5,000xg for 5min.2. Carefully open the tube and add 100ul of sterile water to dissolve the DNA.3. Close the tube and incubate for 10 minutes at room temperature.4. Briefly vortex the tube and then do a quick spin (less than 5000xg) to concentrate the liquid at the bottom.5. Store the suspended plasmid at -20°C. The DNA is stable for at least one year from date of shipping when stored at -20°C.
RefSeq:	NM_026083.2 , NP_080359.2
RefSeq Size:	6151 bp
RefSeq ORF:	5190 bp
Locus ID:	67302
UniProt ID:	E9Q784
Cytogenetics:	14 D3
Gene Summary:	Associated component of the WMM complex, a complex that mediates N6-methyladenosine (m6A) methylation of RNAs, a modification that plays a role in the efficiency of mRNA splicing and RNA processing (PubMed:29535189, PubMed:29547716). Acts as a key regulator of m6A methylation by promoting m6A methylation of mRNAs at the 3' UTR (PubMed:29547716). Controls embryonic stem cells (ESCs) pluripotency via its role in m6A methylation (PubMed:29547716). In the WMM complex, anchors component of the MACOM subcomplex in the nucleus (PubMed:29547716). Also required for bridging WTAP to the RNA-binding component RBM15 (RBM15 or RBM15B) (PubMed:29535189).[UniProtKB/Swiss-Prot Function]