

Product datasheet for **MG223748**

Hpcal4 (NM_174998) Mouse Tagged ORF Clone

Product data:

Product Type: Expression Plasmids
Product Name: Hpcal4 (NM_174998) Mouse Tagged ORF Clone
Tag: TurboGFP
Symbol: Hpcal4
Synonyms: A1846570; NVP-2
Mammalian Cell Selection: Neomycin
Vector: pCMV6-AC-GFP (PS100010)
E. coli Selection: Ampicillin (100 ug/mL)
ORF Nucleotide Sequence: >MG223748 representing NM_174998
Red=Cloning site Blue=ORF Green=Tags(s)

TTTTGTAATACGACTCACTATAGGGCGGCCGGAATTCGTCGACTGGATCCGGTACCGAGGAGATCTGCC
GCC**CGCATCGCC**

ATGGGGAAAAACAACAGCAAGCTGGCCCCGAGGTGCTGGAAGACCTGGTCCAGAACACGGAGTTCAGCG
AGCAGGAGCTAAAGCAGTGGTATAAGGGTTTCCTGAAGGACTGCCCCAGTGGCATCCTCAACCTGGAGGA
GTTTCAGCAACTCTATATCAAGTTCTTCCCTTATGGAGACCGTCCAAGTTTGCAGCATGCTTTCCGC
ACCTTCGACAAGAACGGCGATGGCACCATCGACTCCGGGAGTTCATCTGCGCCCTTTCTGTACCTCCC
GTGGCAGCTTCGAGCAGAAGCTCAACTGGCCCTTTGAGATGTACGATCTGGACGGTGACGGCCGCATCAC
ACGGCTGGAGATGCTGGAGATCATCGAGGCTATCTATAAGATGGTGGGCACCGTGATCATGATGCGCATG
AACCAGGATGGGCTCACACCCAGCAGCGTGTGGACAAGATCTTCAAGAAGATGGACCAGGATAAGGATG
ACCAGATTACGCTGGAGGAGTTC AAGGAGGCGGCCAAGAGTGACCCGTCCATCGTGTGCTCCTGCAGTG
TGACATGCAGAAG

AG**CGGACCG**ACGCGTACGCGGCCGCTCGAG - GFP Tag - GTTTAA

Protein Sequence: >MG223748 representing NM_174998
Red=Cloning site Green=Tags(s)

MGKNSKLAPEVLEDLVQNTFSEQELKQWYKGFLLKDCPSGILNLEEFQQLYIKFFPYGDASKFAQHAFR
TFDKNGDGTIDFREFICALSVTSRGSFEQKLNWAFEMYDLDDGGRITRLEMLEIIEAIYKMGVTVIMMRM
NQDGLTPQQRVDKIFKKMDQDKDDQITLEEFKEAAKSDPSIVLLLLQCDMQK

SGP**TRRRLE** - GFP Tag - V

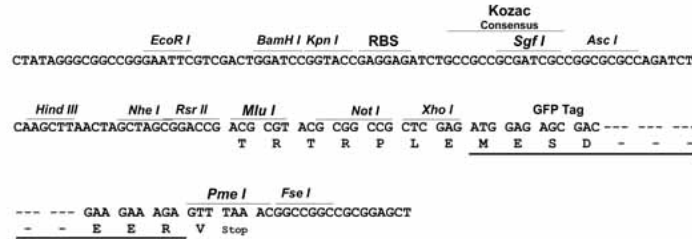
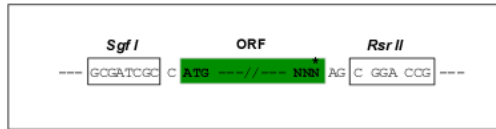
Restriction Sites: Sgfl-RsrII



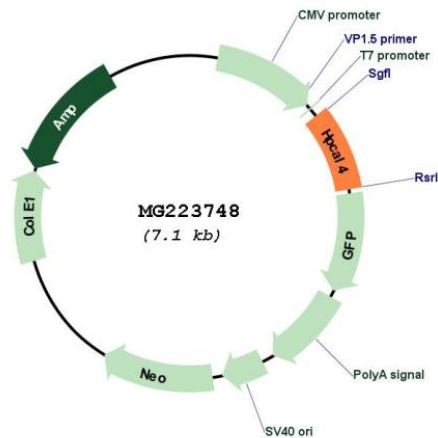
[View online »](#)

Cloning Scheme:

Cloning sites used for ORF Shuttling:



Plasmid Map:



ACCN: NM_174998

ORF Size: 573 bp

OTI Disclaimer: The molecular sequence of this clone aligns with the gene accession number as a point of reference only. However, individual transcript sequences of the same gene can differ through naturally occurring variations (e.g. polymorphisms), each with its own valid existence. This clone is substantially in agreement with the reference, but a complete review of all prevailing variants is recommended prior to use. [More info](#)

OTI Annotation: This clone was engineered to express the complete ORF with an expression tag. Expression varies depending on the nature of the gene.

Components: The ORF clone is ion-exchange column purified and shipped in a 2D barcoded Matrix tube containing 10ug of transfection-ready, dried plasmid DNA (reconstitute with 100 ul of water).

Reconstitution Method:

1. Centrifuge at 5,000xg for 5min.
2. Carefully open the tube and add 100ul of sterile water to dissolve the DNA.
3. Close the tube and incubate for 10 minutes at room temperature.
4. Briefly vortex the tube and then do a quick spin (less than 5000xg) to concentrate the liquid at the bottom.
5. Store the suspended plasmid at -20°C. The DNA is stable for at least one year from date of shipping when stored at -20°C.

RefSeq: [NM_174998.4](#), [NP_778163.1](#)

RefSeq Size: 4652 bp

RefSeq ORF: 576 bp

Locus ID: 170638

UniProt ID: [Q8BGZ1](#)

Cytogenetics: 4 D2.2

Gene Summary: May be involved in the calcium-dependent regulation of rhodopsin phosphorylation.
[UniProtKB/Swiss-Prot Function]