

## Product datasheet for **MG223732**

### Unc5a (NM\_153131) Mouse Tagged ORF Clone

#### Product data:

Product Type:	Expression Plasmids
Product Name:	Unc5a (NM_153131) Mouse Tagged ORF Clone
Tag:	TurboGFP
Symbol:	Unc5a
Synonyms:	mKIAA1976; Unc5h1
Mammalian Cell Selection:	Neomycin
Vector:	pCMV6-AC-GFP (PS100010)
E. coli Selection:	Ampicillin (100 ug/mL)



[View online »](#)

**ORF Nucleotide Sequence:**

>MG223732 representing NM\_153131  
 Red=Cloning site Blue=ORF Green=Tags(s)

TTTTGTAATACGACTCACTATAGGGCGGCCGGGAATTCGTCGACTGGATCCGGTACCGAGGAGATCTGCC  
 GCC**CGATCGCC**

ATGGCCGTCGGCCCGCCTGTGGCCAGCGCTCCTGGGCATAGTCTCACTGCCTGGCTTCGTGGTTCGG  
 GTGCCAGCAGAGTGCCACAGTGGCCAACCCAGTGCCTGGTGCCAACCCGGACCTGCTGCCCACTTCT  
 GGTAGAGCCGGAGGACGTGTACATTGTCAAGAACAAGCCCGTGTCTGGTGTGCAAGGCTGTGCCCGCC  
 ACCCAGATCTTCTCAAGTGCAACGGGAATGGGTTCCGCCAGGTCGATCACGTCATTGAACGCAGCACTG  
 ACGGCAGCAGCGGATTGCCAACCATGGAGTCCGGATCAACGTATCAAGGCAGCAGGTCGAGAAAGTGT  
 TGGGCTGGAGGAGTACTGGTCCAGTGTGTGGCATGGAGTCTCTCAGGAACCACAAAAGCCAGAAGGCC  
 TACATCCGGATTGCCTATTTGCGCAAGAAGTCTTGGAGCAGGAGCCGCTGGCCAAGGAAGTGTCACTGGAGC  
 AAGGCATTGTGCTACCTGTGCCCCCGGAAGGAATCCCCCAGCTGAGGTGGAGTGGCTCCGAAATGA  
 GGACCTCGTGGACCCCTCCCTCGACCCCAATGTGTACATCACACGGGAGCACAGCCTAGTGTGCGGCAG  
 GCCCGCCTGGCCGACACTGCCAACTACACTGCGTGGCCAAGAACATCGTGGCCCGTCCGGAAGCGCCT  
 CTGCGGCCGTCATTGTTTATGTGAACGGTGGTGGTTCGACGTGGACCGAGTGGTCCGCTGCAGTGCCAG  
 CTGTGGGCGTGGCTGGCAGAAACGGAGCCGGAGCTGCACCAACCCGGCACCTCTCAACGGGGGCGCCTTC  
 TGTGAGGGGAGAGTGTCCAGAAACAGCCTGCGCCACTCTGTGCCAGTGGATGGGAGCTGGAGCCCAT  
 GGAGTAAGTGGTCAAGCTGCGGGCTTACTGCACCCACTGGCGGAGCCGGAGTGTCCGACCCAGCGCC  
 CCGCAACGGAGGTGAGGAGTGGCGGGTGTGACTGGACACCCGCAACTGTACCAAGTGCCTCTGCCTG  
 CACACCTCTCCGGCCCCGAGGACGTGGCTCTCTACATCGGCCTCGTCCCGTGGCCGTGCCTCATCT  
 TGCTGTGCTGGTCTCTCGTCTCATCTACTGCCGAAGAAGGAAGGACTGGACTCAGACGTGACTC  
 ATCCATCCTTACCTCAGGCTTCCAGCCTGTGACATCAAGCCAGCAAAGCAGACAATCCCCATCTGCTC  
 ACCATCCAACCGACCTCAGCACACCAGCACCTACCAGGGCAGCCTGTGTCCCGGAGGATGGAC  
 CCAGCCCCAAGTCCAGCTCTCTAATGGTCACTGCTCAGCCACTGGGAGTGGCCGACATACGCTGCA  
 CCACAGCTCCCCACCTCTGAGGCTGAGGACTTCGTCTCCCGCCTCTCCACCCAAAACACTTTCTGTTCT  
 CTGCCCGCGGTACCAGCAACATGGCCTATGGACCTTCAACTTCTCGGGGGCCGGCTGATGATCCCTA  
 ACACAGGAATCAGCCTCCTACACCCCGGACGCCATCCCCGAGGAAAGATCTACGAGATCTACCTCAC  
 TCTGCACAAGCCAGAAGACGTGAGGTTGCCCTAGCTGGCTGTCAGACCCTGCTGAGTCTATCGTTAGC  
 TGTGGGCCCCAGGAGTCTGCTCACCCGGCCAGTCATCCTTGCCATGGACCACTGCGGGGAGCCAGTC  
 CCGACAGCTGGAGCCTGCGCCTCAAAAAGCAGTCTGTGAGGGCAGCTGGGAGGACGTGCTGCACCTGG  
 TGAGGAGTCGCCCTCTCATCTCTACTACTGCCAGCTGGAGGCCGGGGCCTGCTATGTCTTACCAGAGCAG  
 CTAGGCCGCTTTGCCCTGGTGGGAGAGGCCCTCAGCGTGGCTGCCACCAAGCGCCTCAGGCTCCTTCTGT  
 TTGCCCTGTGGCCTGTACGTCCCTCGAGTACAACATCCGAGTGTACTGCCTGCACGACCCACGATGC  
 TCTCAAGGAGGTGGTGCAGCTGGAGAAGCAGCTGGGTGGACAGCTGATCCAGGAGCCCGTGTCTGCAC  
 TTCAAAGACAGTTACCACAACCTACGTCTGTCCATCCACGACGTGCCAGCTCCCTGTGGAAGAGCAAGC  
 TCCTTGTGAGTACCAGGAGATCCCTTTTACCACATCTGGAATGGCACTCAGCAGTATCTGCACCTGCAC  
 CTTACCCCTGGAGCGCTCAATGCCAGCACCCAGCAGCTGGCTGCAAGGTGTGGTGTGGCAGGTGGAG  
 GGAGATGGACAGAGCTTCAACATCAACTTTAACATCACTAAGGACACGAGGTTTGTGAAATGCTGGCTC  
 TGAGAGTGAAGGGGGGTCCCAGCCCTGGTGGGCCCCAGTGCCTTCAAGATCCCCTTCTCATTGGCA  
 AAAGATCATTACCAGCCTGGACCCACCCTGCAGCCGGGGCCGACTGGCGAACTCTAGCCAGAAACTT  
 CACCTGGACAGCCATCTTAGCTTCTTTGCCTCCAAGCCAGCCCTACAGCCATGATCCTCAACCTATGGG  
 AGGCGCGGCACTTCCCAACGGCAACCTCGGCCAGCTGGCCGAGCTGTGGCCGACTGGCCAGCCAGA  
 TGCTGGCCTTTCACCGTGCAGAGGCCGAGTGC

**ACGCGTACGCGGCCGCTCGAG** – GFP Tag – GTTTAA

Protein Sequence: >MG223732 representing NM\_153131  
 Red=Cloning site Green=Tags(s)

MAVRPGLWPALLGIVLTAWLRGSGAQQSATVANPVPGANPDLLPHFLVEPEDVYIVKNKPVLLVCKAVPA  
 TQIFFKNGEWRQVDHVIERSTDGSSGLPTMEVRINVSRRQVEKVFGLLEEWQCVAWSSSGTTKSQKA  
 YIRIAYLRKNFEQEPLAKEVLSLEQIVLPCRPEGIPPAEVEWLRNEDLVDPSPDNVYITREHSLVVRQ  
 ARLADTANYTCVAKNIVARRRSASA AVI VYVNGGWSTWTEWSVCSASCGRGWQKRSRSTNPAPLNGGAF  
 CEGQNQKTACATLCPVDGWSWSPKWSACGLDCTHWRSECSDPAPRNGGEECRGADLDTRNCTSDLCL  
 HTSSGPEDVALYIGLVAVAVCLILLLLVLVLIYCRKKEGLDSDVADSSILTSGFQPVSIKPSKADNPHLL  
 TIQPDLSTTTTTYQSLCPRQDGPSPKFQLSNGHLLSPLGSGRHTLHSSPTSEAEFVSRSLSTQNYFRS  
 LPRGTSNMAYGTFNFLGGRLMIPNTGISLLIPDAIPRGKIYEIYLTLHKPEDVRLPLAGCQTLSPIVS  
 CGPPGVLLTRPVILAMDHCGEPSDWSLRLKKQSCGSWEDVLHLGEESPSHLYYCQLEAGACYVFTEQ  
 LGRFALVGEALVAATKRLRLLLFAPVACTSLEYNIRVYCLHDTHDALKEVVQLEKQLGGQLIQEPRVLH  
 FKDSYHNLRLSIHDVPSLWKSLLVSYQEIPFYHIWNGTQQYLHCTFTLERVNASDSDLACKVWVWQVE  
 GDGQSFNINFNITKDRFAEMLALESEGGVPALVGPSAFKIPFLIRQKIITSLDPPCSRSGADWRTLAQKL  
 HLDSHLSFFASKPSPTAMILNLWEARHPNGNLGQLAAAVAGLGQPDAGLFTVSEAE

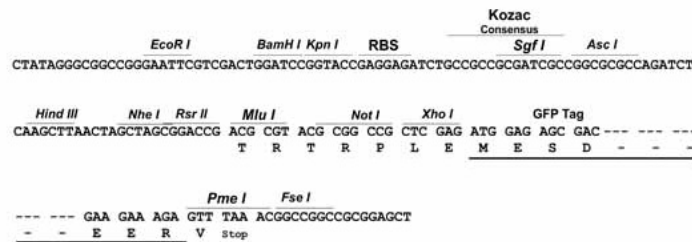
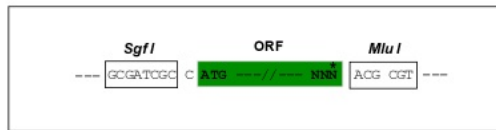
TRTRPLE - GFP Tag - V

Chromatograms: [https://cdn.origene.com/chromatograms/ja1725\\_f10.zip](https://cdn.origene.com/chromatograms/ja1725_f10.zip)

Restriction Sites: SgfI-MluI

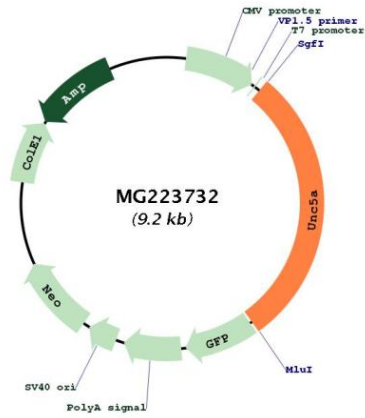
Cloning Scheme:

Cloning sites used for ORF Shuttling:



<b>ACCN:</b>	NM_153131
<b>ORF Size:</b>	2694 bp
<b>OTI Disclaimer:</b>	The molecular sequence of this clone aligns with the gene accession number as a point of reference only. However, individual transcript sequences of the same gene can differ through naturally occurring variations (e.g. polymorphisms), each with its own valid existence. This clone is substantially in agreement with the reference, but a complete review of all prevailing variants is recommended prior to use. <a href="#">More info</a>
<b>OTI Annotation:</b>	This clone was engineered to express the complete ORF with an expression tag. Expression varies depending on the nature of the gene.
<b>Components:</b>	The ORF clone is ion-exchange column purified and shipped in a 2D barcoded Matrix tube containing 10ug of transfection-ready, dried plasmid DNA (reconstitute with 100 ul of water).
<b>Reconstitution Method:</b>	<ol style="list-style-type: none"><li>1. Centrifuge at 5,000xg for 5min.</li><li>2. Carefully open the tube and add 100ul of sterile water to dissolve the DNA.</li><li>3. Close the tube and incubate for 10 minutes at room temperature.</li><li>4. Briefly vortex the tube and then do a quick spin (less than 5000xg) to concentrate the liquid at the bottom.</li><li>5. Store the suspended plasmid at -20°C. The DNA is stable for at least one year from date of shipping when stored at -20°C.</li></ol>
<b>RefSeq:</b>	<a href="#">NM_153131.4</a>
<b>RefSeq Size:</b>	3974 bp
<b>RefSeq ORF:</b>	2697 bp
<b>Locus ID:</b>	107448
<b>UniProt ID:</b>	<a href="#">Q8K1S4</a>
<b>Cytogenetics:</b>	13 B1
<b>Gene Summary:</b>	Receptor for netrin required for axon guidance. Functions in the netrin signaling pathway and promotes neurite outgrowth in response to NTN1. Mediates axon repulsion of neuronal growth cones in the developing nervous system in response to netrin. Axon repulsion in growth cones may be mediated by its association with DCC that may trigger signaling for repulsion. It also acts as a dependence receptor required for apoptosis induction when not associated with netrin ligand.[UniProtKB/Swiss-Prot Function]

Product images:



Circular map for MG223732