

Product datasheet for **MG223710**

Extl1 (NM_019578) Mouse Tagged ORF Clone

Product data:

Product Type:	Expression Plasmids
Product Name:	Extl1 (NM_019578) Mouse Tagged ORF Clone
Tag:	TurboGFP
Symbol:	Extl1
Synonyms:	D430033M16Rik
Mammalian Cell Selection:	Neomycin
Vector:	pCMV6-AC-GFP (PS100010)
E. coli Selection:	Ampicillin (100 ug/mL)



[View online »](#)

ORF Nucleotide Sequence:

>MG223710 representing NM_019578
 Red=Cloning site Blue=ORF Green=Tags(s)

TTTTGTAATACGACTCACTATAGGGCGGCCGGAATTCGTCGACTGGATCCGGTACCGAGGAGATCTGCC
 GCC**CGGATCGCC**

ATGCTGTGGAGAAGAAAGTCCTTCTGGCTGGCGTTGTGTCAGCCTTCTGGCTCCTCCTCGTCTCCTAGGAG
 TCTTCCCTTCGCTGGCAGTGTGCGCCGGTCTCTTCCAGGGCGCTCCAAGGCTGGCCCGCTGGCT
 GGATGCTGCCTTCTTACAGAGTTTCTCCAGTCTGAGACGAACCCAGAAGATGTCGCACAGCTCCCTCGG
 GTCTCTCGGGGAAGCAGCTGCACCTGGGGAGCCTGCTTTGACACCTCCAAGTGTAGGGGAAAGTCTCA
 AGATCTTTGTGCACTCCCGGCTGGTCCGACCTCTGAGGCTCAGCGCAGGATCCTGGATTCTTGAAGG
 CTCCCGTACTCTGCACTCAGCCAGCAGACGCTTGCCTTCTCCTTTTCTCCCGAGCCAGGATCGTAGA
 GGAGCTGCGGGCCCTGCCTCCGAACGGAACGGAGGCCGAACCATCTGGTGTGAGTCTCTACCCAG
 CCCCTTGACCAGGCTGGACAGGCGATGGTAGCTGAGGCCAGCCCTCCTCGGACATCTCCGACCGGG
 CTTGATATAGCGCTCCCGTATCTCCCGAAGCTCACCCATTGCGAGGTGGGGCTCCCGCAAACCTGCAG
 CAGCACAGTCCCCAACCTGGGGCCACCTTACTGGCGGTAGCAGAGGAGAAAGGCAGGTGGCGTATACAA
 GCACCCACGCCTCAGCCTGCCTCTGGGACAGGCACTGTGAGCAAGACCCTGGACCCAGCAGACCTACCC
 AGGAGAGACCTTCCCAATGCCACCTTCTGCCTCATCCCTGGTACCCGATCTGCCACCTCCTGCTTCTC
 CAAGCCCTCAGGCCGGCTGCATCCCGTGTCTCTCAGCCCCGCTGGGAGCTGCCTTCTCTGAAGTCA
 TCGACTGGACCAAGGCAGCCATCATTGTGATGAGAGACTCCCACTGCAGGTCTGGCTGCCCTCCGTGA
 AATGCTCCCTTCAGGGTCTCGCCCTGCGCCAGCAGACCCAGTTTCTGTGGACCGCTTACTTCTCCTCG
 GTGGAAAAAGTTATCCATACCACCCTAGAGGTTATTAGGACCGGATCTGGGTGCATCAGGTACCCCT
 CACTGATGTGGAATAGCCCCCGGAGCACTCTTGGCGCTGCCACATTTCCACGAGCCTCAAGACTT
 CCCCTTTTATCATCTGCAACTGGGCTCTGGCCCTGGGAGCAGTTTCAGCGCCGTGATCTGGGTGGGAGCC
 TCTGGAGAGTCCCTGCTGAAGCTCATCCAGGAGGTGGCAGGTTCTCGCACTGTGCCAGATCCTGATTC
 TCTGGAACAGTGAGAAGCCGCCCTGACAGGTGGCCGAGACAGCAGTCCCCTAACAGTCATCAAGGG
 GCACAGGAAGGTCAGCAACCGGTTCTTCCCGTACAGCAACATCAGCACCAATGTTATCCTCAGCCTTGT
 GCTCAGAGCACTTTTCTACCAGTGAGGTGGACTTTGCCTTTGTGGTGTGGCAGAGCTTCTGAGCGGA
 TGGTGGGCTTTCTGTCCGAAGCCACTTCTGGGATGAGGCCAGGGTGGTGGGGCTACCGTACTGGGAT
 GACCAATGACTTCTCCATGGTCTGACCACGGCTGCCTTCTACCACAGGTAACACACCCTTCTCACC
 CACTCCCTGCCTAAGGCCCTGAGGACCATAGCTGATGAGACTCCACCTGTGTTGACGCTCTGATGAACT
 TCCTGGTAGCCACCGTACCAAACCTGCCCCCTATCAAGGTGCCTTATGGGAGGCAGCACCCGGAGGCTGT
 GCCAATGGATTCTGGGATCCACGACAGTGGCCGAGCCTCAGCCCTGGATCAGGACTGCATCAACCGT
 TTAGCAGCAGGGTTCCGGCCATGCCTCTGGTTTCTCTCAAGTGCCTGGATCCGGTGTGTTCAAGG
 ACCCGGTATCGGTGCAACGCAAGAAGTATCGCAGTCTAGAGAAGCCA

ACGCGTACGCGGCCGCTCGAG - GFP Tag - GTTTAA

Protein Sequence: >MG223710 representing NM_019578
 Red=Cloning site Green=Tags(s)

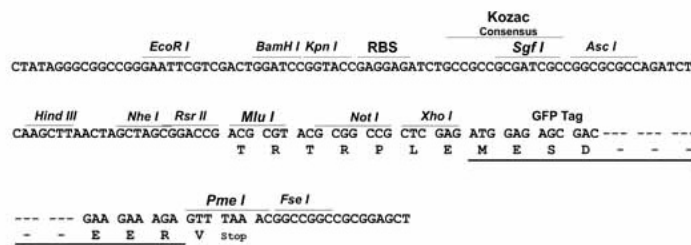
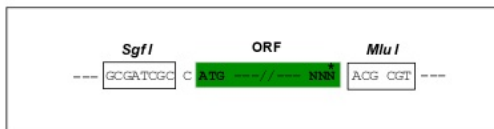
MLWRRKSFWLALSAFWLLLVLGVFPLRLAVSPGPLPGRSQGWPRWLDAAFLQSFSSQSETNPEDVAQLPR
 VSRGSSCTWGFACFDTSKCRGKVLKIFVHSPAGPTSEAQRRLDSLEGSRYALSADACLFLPSQDRR
 GACGPLPPNWNNGRNHLVLSLYPAPCTRLGQAMVAEASPSDDIFRPGFDIALPYLPEAHPLRGGAPGKLQ
 QHSPQPGATLLAVAEKGRWRITSTHASACLWDRHCEQDPGPQQTYPGETLPNATFCLIPGHRSATSCFL
 QALQAGCIPVLLSPRWELPFSEVIDWTKAAIIADERLPLQVLAALREMLPSRVLALRQQTQFLWTAYFSS
 VEKVIHTTLEVIQDRIWGASGHPSLMWNSPPGALLALPTFSTSLQDFPFYHLQLGSGPGSSFSAVIWWGA
 SGESLLKLIQEVAGSRHCAQILILWNSEKPPPDRWPETA VPLTVIKGHRKYSNRFFPYSNISTNVILSLD
 AQSTLSTSEVDFAFVWVQSFPERMVGFLSGSHFWDEAQGGWGYRTGMTNDFSMVLTTAAFYHRYHTLFT
 HSLPKALRTIADETPTCDVLMNFLVATVTKLPPIKVPYGRQHPEAVPMDSGDPRPVPEPQLDQDCINR
 LAAGFGHMPLVSSQVRLDPVLFKDPVSVQRKKYRSLEKP

TRTRPLE - GFP Tag - V

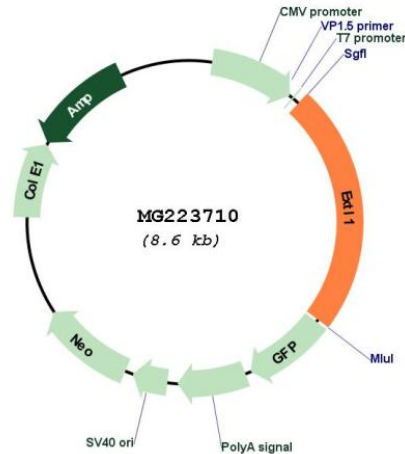
Restriction Sites: SgfI-MluI

Cloning Scheme:

Cloning sites used for ORF Shuttling:



Plasmid Map:



ACCN: NM_019578

ORF Size: 2007 bp

OTI Disclaimer: The molecular sequence of this clone aligns with the gene accession number as a point of reference only. However, individual transcript sequences of the same gene can differ through naturally occurring variations (e.g. polymorphisms), each with its own valid existence. This clone is substantially in agreement with the reference, but a complete review of all prevailing variants is recommended prior to use. [More info](#)

OTI Annotation: This clone was engineered to express the complete ORF with an expression tag. Expression varies depending on the nature of the gene.

Components: The ORF clone is ion-exchange column purified and shipped in a 2D barcoded Matrix tube containing 10ug of transfection-ready, dried plasmid DNA (reconstitute with 100 ul of water).

Reconstitution Method:

1. Centrifuge at 5,000xg for 5min.
2. Carefully open the tube and add 100ul of sterile water to dissolve the DNA.
3. Close the tube and incubate for 10 minutes at room temperature.
4. Briefly vortex the tube and then do a quick spin (less than 5000xg) to concentrate the liquid at the bottom.
5. Store the suspended plasmid at -20°C. The DNA is stable for at least one year from date of shipping when stored at -20°C.

RefSeq: [NM_019578.1](#)

RefSeq Size: 4129 bp
RefSeq ORF: 2010 bp
Locus ID: 56219
UniProt ID: [Q9JKV7](#)
Cytogenetics: 4 66.63 cM
Gene Summary: Probable glycosyltransferase.[UniProtKB/Swiss-Prot Function]