

## Product datasheet for **MG223708**

### Rprd2 (NM\_001081293) Mouse Tagged ORF Clone

#### Product data:

Product Type:	Expression Plasmids
Product Name:	Rprd2 (NM_001081293) Mouse Tagged ORF Clone
Tag:	TurboGFP
Symbol:	Rprd2
Synonyms:	2810036A19Rik; 4930535B03Rik; 6720469I21Rik; AL022841; AL022940; AU021304; BB077382
Mammalian Cell Selection:	Neomycin
Vector:	pCMV6-AC-GFP (PS100010)
E. coli Selection:	Ampicillin (100 ug/mL)
ORF Nucleotide Sequence:	>MG223708 representing NM_001081293 Red=Cloning site Blue=ORF Green=Tags(s)

TTTTGTAATACGACTCACTATAGGGCGGCCGGAATTCGTCGACTGGATCCGGTACCGAGGAGATCTGCC  
GCC**CGATCGCC**

ATGGCGCGCGCGCGCGGAGGCAGCAGTAAGGCCTCCTCCTCGTCGGCCTCGTCCGACGGGGCCCTGG  
AGTCTTCGTTGGATCGAAAATCCAGTCGGTGACCAACACCATGGAATCCATTCAAGGCTTGTGTCCTG  
GTGTATAGAAAACAAGAAACACCACAGTACAATCGTCTACCATTGGATGAAGTGGCTCCGGAGATCTACA  
TATCCCATCGTTGAATCTCTTTATCTTCCCAATGATGTCATACAGAATTGTAACCGGAAAAATGCAA  
TCATATTCGTGAATCATTGCTGATGTGCTTCTGAAGCAGCTGCTCTAGTGAAGGATCCATCCGTCCTC  
TAAGTCTATAGAACGAATCTTTAAAATCTGGGAAGATCGAAATGTGTACCCAGAAGACATGATTGTGGCA  
TTGAGAGAAGCTTTAATGGACAGAGCAGCTTCCATAATGCCAGACTGCAAAAACTGCAATGTTTTCCAG  
GTACCACTTTCAAACTCAGAAGCAGCTGAAAGAAAATCTGAACAAACAACCGAATAAGCAGTGGAGAA  
ATCACAACATCCACGAATCCAAAAGCTGCTCTCAAATCTAAGATTGTTGCTGAGTTTCGATCTCAGGCC  
CTCATTGAAGAGTTGCTGATGTACAAACGATCAGAAGATCAGATAGAAGTGAAGGAGAAACAGTTGTCAA  
CTATGAGAGTGGATGTCTGCAGCACAGAACTCTCAAGTGTAAAAGATAAACAGGTGGAAAGAAGTT  
CTCCAAAGAATTTGAAGAAGCAAGTTCCAAGCTAGAGGAGTTTGTGAATGGATTAGATAAACAGGTGAAA  
AATGGGCCCTCACTAACAGAAGCATTAGAGAAGCTGGAATTTTCTATGAAGCACAGTACAAGGAAGTGA  
AAGTGGTCGCTAACGCTTACAAAACCTTCGCTAACCGAGTAAACAACCTTAAAGAAGAAGTTGGATCAATT  
GAAGTCAACCCCTTCTGATCCTGAGGAATCACCAGTCCCCTCTCCAAGTATGGATGCTCCTTCCCAACT  
GGTTCTGAGTCTCCATTCCAGGGCATGGGAGGTGAAGAACCCAGTACCAGGCCATGGAGAGTGACAAGT  
CTGCCACACCCGAGCCTGTGACTGATAACCGTGTGTGGAAGACATGGAAGTCTCAGATGTGGAAGATGA  
TGGATCAAAAATCATTGTGGAGGACCGGAAAGAAAAGCCTGTGGAGAACTGCTGTCTCCACTGGTGTG  
CCCACCAAGTCAACAGAAAGTGTCTCGAAAGCCTCACCGTGTGCCACCGTCTGTGCCACGACGGCAG  
CTCCACCTCTCCGAAGCCTCTGAGCACTGCACCTCTGTCCCCTTCCCAACTTTGGTTTTGCCAACT  
GGCAAATGTGGATCTGGCAAAGATCAGTCCATCCTTAGCAGCCTAACATCAGTCATGAAAATACGGG



[View online »](#)

GTCAGTCTGCATCAAGACCTTCTCCAGGAATTCCTACCAGTCCCAGCAACCTCAGCAGTGGCCTGAAAA  
CACCTGCACCTGCCACAACACCATCTCACAACCTCTGGCAAATATCCTGTCAAAGGTGGAGATCACCCC  
AGAGAGCATTCTCTGTCTTTCTAAAACCCAGACACAGTCAGCCCCTGCACTCCAAGGCTTGTATCA  
TACTTCAGAGTGTACTGCGAACCTGTGCCAGCCAGTGAAGTCACTTCCCAGAGCACCACAGCCTCCC  
CTGCGAGCACCACAGGCTCTGCCGTAAGGGGAGAAATCTACTCTCCAGTACCCAGTCTTTTATCCCAA  
AAGCTTCAACTATTCTCCTAGTTCTTCACTTCTGAAGTCTTCCACTTCAGCAAGCAAGGCGTCAGTT  
GGGCAGAGCCCGGTGCTCCCAAGCACTACGTTTTAACTACCATCCAGTTCTTTGGGATTTACTGGTACCC  
ACAATCCTAGCCCTGCTGCCCCACTACTGAAGTTGCCGTGTGCCAATCCTCAGAGGTCTCCAAGCCAAA  
GCCAGAATCAGAGTCCACCTCTCCAAGCCTGGAATGAAGATCCACAACCTCTTGAAAGGTAATCCTGGT  
TTCAGTGGCTTAACTTAAACATCCCGATCCTAAGCAGCTTGGGATCCAGTGCCTCATCAGAGGCCATG  
CCTCAGACTTCCAGCGTGGTCTACTAGCACTTCAAGTACAGCATCGATGGAACCTGTTTGGGATGA  
ACGGAGTGGGACACCCACCCAGGATGAGATGATGGATAAGCCACATCCAGCAGCGTAGACACTATGTCC  
CTGCTGTCTAAGATCATCAGCCCTGGTTCTCAACACCCAGCAGTACAAGTCCGACCTCCAGGAAGAG  
ATGAAAGTACCCCAAGAGCTCCCAATTCTGTGTCTACATATCGACCGTTTGGTCTGGCAGTGACTC  
TCCCTACAAGCAGCCTTCTGGTGGAGTTGAGAGCCGTATCACTGATGGACTCTTACAGGAAAAGCTC  
TCCCAGATACTTCTTCCAGGAAGACGAGGACTACCGAGATTTTGAAGTATTCAGGGCCTCCTCCATCTG  
CCATGATGAATCTAGAGAAGAAACCCAGCCAAATCCATCCTGAAGTCAAGCAAGCTTTCTGATGCCACTGA  
GTACCAGCCAATCCTGTCTAGTTACAACCACAGGGCCCAAGAGTTTGGGGTCAAGTCTGCCTTCCCTCCA  
TCTGTAAGGGCCCTCCTGGACTTAGTGAGAACTGTGACCGTCTCTCATCTCCCCTGGGCTATTTGGTG  
CCTTCAACATAAGAGGGAATGAACCTGGGTCTGAGCGGTACCATCACCAAGTAAAAATGATGCATTTTT  
CACCCCTGACTCCAACCACAGTGGCTTGTCTAGTCTACTGCTGGGCATCTCACGTTGCCACAGACACAA  
TACCCAGACTCTCTCACTCAGTCCCACATCGTTCCATTTCTCTTACAGAGTACCCTTGGCCGCTCCAG  
CAGGCCACCCACCCACATCAGGCGTGGAAAAAGTCTGGCCTCCACGATTTCCACCACATCGACGATTGA  
GTTTAAGAAATAGCTTAAAAACGCCTCAGCAAGCCCTCAGATGATAAGCATTTTGGCCAGACACCCAAAC  
AAGGGTACTTCAAGTGTGGTGTGAGTCTCTCAAACCTCACCCAGCCAGCTTGGCCACCACTGACCAAC  
AACAGGAAGAACACTATCGAATAGAAACTCGTGTTCCTCCTCTGTTTAGACTTGCTGACAGCACAGA  
AGAAAAGGGGGCCCTATAGAACTCTAGGTTATCATAACGCAGCTAATAGGAGGATGTCAGGGGAGCCG  
ATAAAGACTGTAGAGTCTATACGAGTTCCTGGGAAGGAAATAGAGGACATGGGCGGAGGTTTCAAGAG  
TGGGTTGGTTTGTCTGAGCACACCAGGCAGCTTTTTGACAATGGTCCCTCAAGTGCCTCTGAGTTGGC  
ATCCCTTGGGGTGGGGCAGCGGAGGCCTCACTGGCTTAAAGACAACGCCGTACAAGGAACGGGACCC  
CAGTTTCAGGAGAGTGTACCAGCTTTCGTTCCAACAGTTTCAACTCAACATTTGAGCATCATCTCCCC  
CATCCCCTTTGGAACATGGGGCACCCCTTCCAGAGAGAGCCAGTGGGGCCGTATCTGCCCCACCTGCCCC  
TCTAAGGATCATGGTGGTATCTTCTCTCGAGAGGCACCCACTCATCTGCCCTCTGTGGATCTTTCGAAC  
CCCTTTACAAAGGAGGCATCTCTGGCCACGCTGGCCACCACTCCTCCAGGAGAGCACAGCGGAGTTC  
CTTTCCCTCCACCCCTCCTCCACCCCGGGGAACCTAGCAGTGGAGGGACTGGTGTCCCCTTTGC  
TACTCCAGCCCGCTCCACCCCTGTTGACCACTCTGGGTTGTACCTTCCCAACTCCACCACTGCCA  
GAGCATGGAGTAACTGGGGCTGTGTCAGTTTTTCCAAGGACCATAGTCCCTCCTTCAAGGACCATGG  
CTGAGCATTGTTGGGTGCTCACAGGACCCAGGGACCTCAATGGCCCTGGTCTTAAACGTTTACAGAGAG  
CCTGAGCCTGCCTCCCATCCTCTGGAGCACCTGGGCCAGCCCTTGGAGGAGGTGGGGAGGCAACACC  
AGCAGCAGTGGCCTTCCCTTGAATCCCGCACACAGAGACGCCATCGGCCGAGTGGTATGATTTTACGGA  
GTCCCCGGCCAGACTTTCCGCTAGGGAAGCTTTTCTCGGCAGAGACCCATTCCACAGTTTAAAGAGACC  
CAGGCCACCTTTTGTAGAGGCCCTCCGTTCTTTGCACAAAACGCCATTTTCCCTCCAGGTAC

ACGCGTACGCGGCCGCTCGAG - GFP Tag - GTTTAA

Protein Sequence: >MG223708 representing NM\_001081293  
 Red=Cloning site Green=Tags(s)

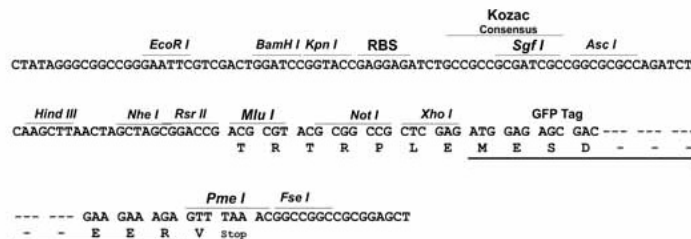
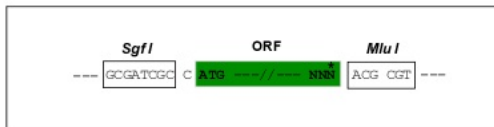
MAAGGGGGSSKASSSSASSAGALESSLDRKFQSVTNTMESIQGLSSWCIENTKHHSTIVYHWMKWLRRST  
 YPHRLNLFYLANDVIQNCRKNAIIFRESFADVLPEAAALVKDPSVSKSIERIFKIWEDRNVYPEDMIVA  
 LREALMDRAASHNARLQKLQCFPGTTFFKTKQQLKENLNKQPNKQWKSQTSTNPKAALKSKIVAEFRSQA  
 LIEELLMYKRSEDQIELKEKQLSTMVRDVCSTETLKCLKDKTGGKKFSKEFEEASSKLEEFVNLKQVK  
 NGPSLTEALENAGIFYEAQYKEVKVVANAYKTFANRVNLLKKLKDLKSTLPDPEESPVPSPMDAPSP  
 GSESPFQGMGGEEPQSPAMESDKSATPEPVTDNRDVEDMELSDVEDDGSKIIVEDRKEKPEKPAVSTGV  
 PTKSTESVSKASPCAPPSVPTTAAPPLPKPLSTALLSPSPTLVLPNLANVDLAKISSILSSLTSMKNTG  
 VSSASRSPGIPTSPSNLSSGLKTPAPATTPSHNPLANILSKVEITPESILSALSKTQTQSAPALQGLSS  
 LLQSVTANPVPASEVTSQSTTASPASTTGSVAVKGRNLLSSTQSFIPKSFNYSPSSSTSEVSSTASKASV  
 GQSPVLPSTTFKLPSSSLGFTGTHNPSPAAPTEVAVCQSSSEVSKPKPESESTSPSLEMKIHNFLKGNPG  
 FSGNLNIPILSSLGSSAPSEGHASDFQRGPTSTSVDSIDGTPVRDERSGTPTQDEMMDKPTSSSVDTMS  
 LLSKIIISPGSSTPSSTRSPPPGRDESYPQELPNSVSTYRPFGLGSDSPYKQPSGGVERPSSLMDSQEK  
 FPDTSFQEDDYRDFEYSGPPPSAMNLEKPAKPAKPAKPAKPAKPAKPAKPAKPAKPAKPAKPAKPAKPAK  
 SVRALLDSSENCRLSSPPGLFGAFNIRGNEPGESESPSPSKNDAFFTPDSNHSGLSQSTAGHLTLPQTQ  
 YPDSPHSVPHRSIFSSQSTLAAPAGHPPTSGVEKVLASTISTTSTIEFKNMLKNASRKPSDDKHFGQTPN  
 KGTSSDGVSLSNLTQPSLPTTDQQEEHYRIETRVSSCLDLDPDSTEKGAPIETLGYHNAANRRMSGEP  
 IKTVESIRVPGKGNRGGREVS RVGWFDLSTPGSSFDNGPSSASELASLGGGGSGGLTGFKTTPYKERAP  
 QFQESVTSFRSNSFNSTFEHLLPPSPLEHGAPFQREPVGPSAPPAPPKDHGGIFSREAPTHLPSVDLSN  
 PFTKEASLAHAGPPPPGEGHSGVFPFPPPPPPPPGELSSGGTGVPFATPAPPPPPVDHSGVVPFPTPLP  
 EHGVTGAVSVFPKDHSSLLQGTMAEHFGLVTGPRDLNGPGLNRSRESLSLPSHLEHLGPALGGGGGNT  
 SSSGLPLSPAHRDAIGRSGMILRSPRPDFRPREAFLGRDPFHSLKRPRPPFVRGPPFFAPKRPFPPRY

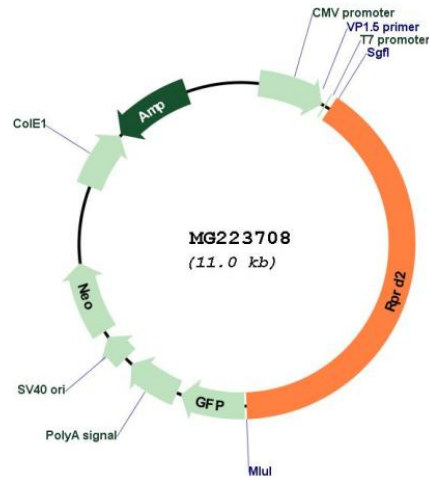
TRTRPLE - GFP Tag - V

Restriction Sites: SgfI-MluI

Cloning Scheme:

Cloning sites used for ORF Shutting:



**Plasmid Map:**


- ACCN:** NM\_001081293
- ORF Size:** 4407 bp
- OTI Disclaimer:** The molecular sequence of this clone aligns with the gene accession number as a point of reference only. However, individual transcript sequences of the same gene can differ through naturally occurring variations (e.g. polymorphisms), each with its own valid existence. This clone is substantially in agreement with the reference, but a complete review of all prevailing variants is recommended prior to use. [More info](#)
- OTI Annotation:** This clone was engineered to express the complete ORF with an expression tag. Expression varies depending on the nature of the gene.
- Components:** The ORF clone is ion-exchange column purified and shipped in a 2D barcoded Matrix tube containing 10ug of transfection-ready, dried plasmid DNA (reconstitute with 100 ul of water).

**Reconstitution Method:**

1. Centrifuge at 5,000xg for 5min.
2. Carefully open the tube and add 100ul of sterile water to dissolve the DNA.
3. Close the tube and incubate for 10 minutes at room temperature.
4. Briefly vortex the tube and then do a quick spin (less than 5000xg) to concentrate the liquid at the bottom.
5. Store the suspended plasmid at -20°C. The DNA is stable for at least one year from date of shipping when stored at -20°C.

**RefSeq:** [NM\\_001081293.1](#), [NP\\_001074762.1](#)

**RefSeq Size:** 8419 bp

**RefSeq ORF:** 4410 bp

**Locus ID:** 75137

**UniProt ID:** [Q6NXI6](#)

**Cytogenetics:** 3 F2.1