

Product datasheet for **MG223700**

Vrk1 (NM_011705) Mouse Tagged ORF Clone

Product data:

Product Type:	Expression Plasmids
Product Name:	Vrk1 (NM_011705) Mouse Tagged ORF Clone
Tag:	TurboGFP
Symbol:	Vrk1
Synonyms:	51PK
Mammalian Cell Selection:	Neomycin
Vector:	pCMV6-AC-GFP (PS100010)
E. coli Selection:	Ampicillin (100 ug/mL)
ORF Nucleotide Sequence:	>MG223700 representing NM_011705 Red=Cloning site Blue=ORF Green=Tags(s)

TTTTGTAATACGACTCACTATAGGGCGGCCGGAATTCGTCGACTGGATCCGGTACCGAGGAGATCTGCC
GCC**CGATCGCC**

ATGCCCGTGTAAAAGCAGCTCAGGCTGGAAGACCCGGACCTGCGAAGAGGCGCCTCGCAGAGCAGTTTG
CCGCTGGAGAGGTCCTAACCGACATGTCTAGGAAGGAGTGAAACTAGGATTGCCATTGGCCAAGGTGG
CTTTGGCTGCATCTATCTGGCGGACACAAATTCTTCAAACCGGTTGGCAGTGACGCGCCTGTGTGTG
AAAGTGAACCCAGTGACAATGGACCTCTTTTCACGGAATTAAGTTCTACCAGAGGGCTGCTAAACCAG
AGCAAATTCAGAAATGGATTTCGTACACATAAATTGAAGTACCTTGGTGTTCCTAAGTATTGGGGATCTGG
TCTACATGATAAAAATGAAAAAGTTACAGTTTTATGATAATGGACCGCTTTGGGAGTGACCTTCAGAAA
ATATATGAAGCAAATGCCAAAAGTTTTCTCGGAAAACCTGATTGCAGCTAAGCTTAAGAATTCTGGATA
TCCTGGAGTACATCCATGAGCATGAGTACGTGCACGGGGACATCAAGGCCTCAAACCTGCTCCTGAGTCA
CAAGAACCCTGACCAGGTATATTTGGTAGACTATGGCCTTGCTTATCGGTACTGCCAGATGGAGTTCAT
AAAGAGTACAAGGAAGATCCCAAAGGTGCCATGACGGCACCCCTGGAGTTCACCAGCATCGACGCTCACA
AAGCGTGGCCCCATCAAGACGTGGTGATTTGAAATACTTGGTATTGCATGATCCAGTGGCTCAGCGG
CTGTCTTCTTGGGAAGATAAATTGAAAGATCCTAACTACGTTAGGGATTCCAAAATTAGATACAGAGAC
AACGTCGCAGCTTTGATGGAGAAATGCTTTCCTGAGAAAAATAAGCCAGGTGAGATCGCTAAGTACATGG
AGTCTGTGAAACTACTGGAATACACCGAAAAACCTCTCTATCAAAACCTACGTGATATCCTTTTACAAGG
ACTAAAAGCTATAGGAAGTAAAGACGACGGCAAACCTGGATTTTAGTGCTGTGGAGAACGGAAGTGTGAAG
ACAAGACCAGCCTCAAAGAAGCGGAAGAAAGAAGCAGAAGAAAGCGCGGTGTGCGCTGTGGAGGACATGG
AGTGCTCAGACACACAGGTGCAAGAGGCCGCACAGACCCGAAGTGTGGAGTCCCAAGGAGCAATACATGG
AAGCATGTCTCAGCCAGCGCGGGCTGCAGCAGCTCTGACAGTTCAGGAGGCAGCAGCATTTGGGATTG
GAACAAGACATGCTAAGGCTAGACCGTAGGGGTTACGAACCAGAAAGAAAGCCAGAAG

ACGCGTACGCGGCCGCTCGAG - GFP Tag - GTTTAA



[View online >](#)

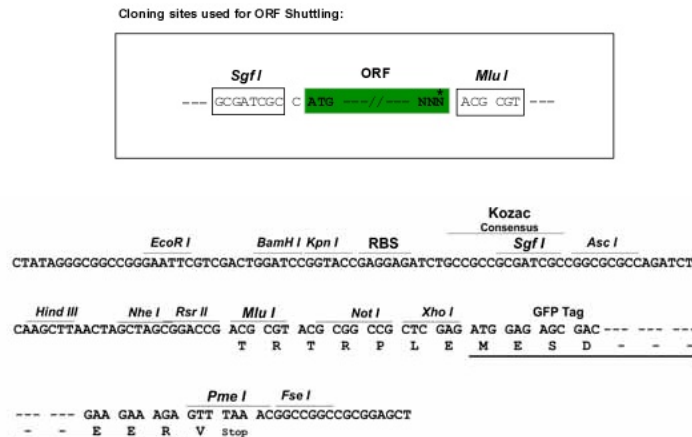
Protein Sequence: >MG223700 representing NM_011705
 Red=Cloning site Green=Tags(s)

MPRVKAAQAGRPGPAKRRLAEQFAAGEVLTMSRKEWKLGLPIGQGGFGCIYLADTNSSKPVGSDAPCVV
 KVEPSDNGPLFTELKFYQRAAKPEIQKWIRTHKLYLGVPKYWGSLHDKNGKSYRFMIMDRFGSDLQK
 IYEANAKRFSRKTVLQLSLRILDILEYIHEHEYVHGDIKASNLLL SHKNPDQVYLVDYGLAYRYCPDGVH
 KEYKEDPKRCHDGTLEFTSIDAHKGVAPSRRGDLEILGYCMIQWLSGCLPWEDNLKDPNVYRDSKIRYRD
 NVAALMEKCFPEKNKPGEIAKYMESVKLLEYTEKPL YQNL RDILLQGLKAI GSKDDGKLD FSAVENG SVK
 TRPASKKRKKEAEE SAVCAVEDMECSDTQVQEA AQTRSVESQGA IHGSM SQPAAGCSSSDSSRRQHLGL
 EQDMLRLDRRGSRTRKKAQK

TRTRPLE - GFP Tag - V

Restriction Sites: SgfI-MluI

Cloning Scheme:



ACCN: NM_011705

ORF Size: 1320 bp

OTI Disclaimer: The molecular sequence of this clone aligns with the gene accession number as a point of reference only. However, individual transcript sequences of the same gene can differ through naturally occurring variations (e.g. polymorphisms), each with its own valid existence. This clone is substantially in agreement with the reference, but a complete review of all prevailing variants is recommended prior to use. [More info](#)

OTI Annotation: This clone was engineered to express the complete ORF with an expression tag. Expression varies depending on the nature of the gene.

Components: The ORF clone is ion-exchange column purified and shipped in a 2D barcoded Matrix tube containing 10ug of transfection-ready, dried plasmid DNA (reconstitute with 100 ul of water).

Reconstitution Method:

1. Centrifuge at 5,000xg for 5min.
2. Carefully open the tube and add 100ul of sterile water to dissolve the DNA.
3. Close the tube and incubate for 10 minutes at room temperature.
4. Briefly vortex the tube and then do a quick spin (less than 5000xg) to concentrate the liquid at the bottom.
5. Store the suspended plasmid at -20°C. The DNA is stable for at least one year from date of shipping when stored at -20°C.

RefSeq: [NM_011705.4](#)

RefSeq Size: 3796 bp

RefSeq ORF: 1323 bp

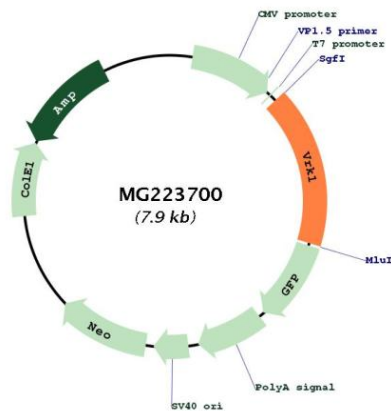
Locus ID: 22367

UniProt ID: [Q80X41](#)

Cytogenetics: 12 E- F1

Gene Summary: Serine/threonine kinase involved in Golgi disassembly during the cell cycle: following phosphorylation by PLK3 during mitosis, required to induce Golgi fragmentation. Acts by mediating phosphorylation of downstream target protein. Phosphorylates 'Thr-18' of p53/TP53 and may thereby prevent the interaction between p53/TP53 and MDM2. Phosphorylates casein and histone H3. Phosphorylates BANF1: disrupts its ability to bind DNA, reduces its binding to LEM domain-containing proteins and causes its relocalization from the nucleus to the cytoplasm. Phosphorylates ATF2 which activates its transcriptional activity (By similarity).[UniProtKB/Swiss-Prot Function]

Product images:



Circular map for MG223700