

Product datasheet for **MG223666**

Arid2 (NM_175251) Mouse Tagged ORF Clone

Product data:

Product Type:	Expression Plasmids
Product Name:	Arid2 (NM_175251) Mouse Tagged ORF Clone
Tag:	TurboGFP
Symbol:	Arid2
Synonyms:	1700124K17Rik; 4432409D24Rik; zipzap/p200
Mammalian Cell Selection:	Neomycin
Vector:	pCMV6-AC-GFP (PS100010)
E. coli Selection:	Ampicillin (100 ug/mL)
ORF Nucleotide Sequence:	>MG223666 representing NM_175251 Red=Cloning site Blue=ORF Green=Tags(s)

TTTTGTAATACGACTCACTATAGGGCGGCCGGAATTCGTCGACTGGATCCGGTACCGAGGAGATCTGCC
GCC**CGATCGCC**

ATGGCAAACCTCGACGGGAAGGGCCCTCCGGACGAGCGGAGGAAGGGACTGGCTTCTGGACGAGCTGC
GGCAGTTCACCCACAGCAGAGGGTCGCCGTTTAAAGAAGATCCCTGCGGTGGTGGGAAGGAGCTGGATCT
TCACGGGCTCTACACCAGAGTCACTACTTAGGCGGATTCGCGAAGGTTTCTGAGAAGAATCAGTGGGA
GAAATTGTTGAAGAGTTCAACTTCCAGAAAGTTGTTCCAACGCTGCCTTTGCTTAAAACAGTATTACT
TGCCTTATCTAGAAAAGTACGAGAAAGTTCATCATTTTGGGAAGATGATGATGAGTACCACAGGCAA
TCCAAAGCCACAGCTTCCATTGGTGAATCCCATCTTCTACAATTACCAGCAACACAGCGTGTGAGAT
TATCTACGTCAAAGTTATGGGTTATCTATGGATTTAATTCGCCAAATGATTATAATAAACTGGTGCTTT
CACTGTTATCTGGACTCCAAATGAAGTGGACTTCGCTATTAATGTGTGCACTCTCCTATCAAAATGAAA
CAAGCAGGTATGCAGCTTGAGAAGGATCCCAAAATCATCACTTACTGCTCGCTAATGCGGGGGTGTTC
GATGACACTTTAGGATCATTCTCTTCTGTCTTTGGAGAAGAGTGGCGAGAGAAGACTGATAGAGACTTTG
TTAAGTTTGGAAAGACATTGTTGATGACAATGAAGTGGGAGATCTCATTCTGACAGAAACAAGGCTCA
TGAAGATACACCAGGAGAATGGATTTGGGAATCTTTATTCATCCACCTCGAAAGCTGGGCATTAATGAC
ATCGAAGGCCAGCGGGTCTGCGAGATCGCAGTGTCTTGGGAACCTCTCCTTTGAGGAGAGCAATGTTA
AGCTCTTGGCAGCTAATCGCACCTGTCTGCGTTTCTGTTGCTCTGACACAGTCATTTTATTTCAAT
AAGGCAGCTAGGCCTGGACACCTTAGGGAATATCGCAGCTGAGCTTTTACTGGACCCTGTGGATTTGAGA
ACCACTCATCTGATGTTTCACTGTTACAAAATGCCTGATGTCAAGGGATAGGTTTTTAAAGATGAGGG
GCATGGAAATTTGGAAATCTCTGCAAAGCAGAGGATAACGGTGTTTTGTGTTGAAATATGTGGATCA
AGATTCATAGAGAGATAATTTGTACCTCACTCTGCCCGATGTGCTGCTGGTACCTCAACCCTGGAG
GTGCTGTACATGCTCACTGAAATGGGGACGTGGCCTGCACAAAGATCGCGAAAGTGGAGAAGAGCATAG
ACGTGCTGGTGTCTGCTCTATGGACGCTCAGATGTTTGGACCTGACGCACTTGTGCCGTGAAGCT
CATTGAGCATCCGAGCTCCAGTACCAAGTGTATCAGAGATTAGCCGCAAGCCATAGAGCAGGTCCAA

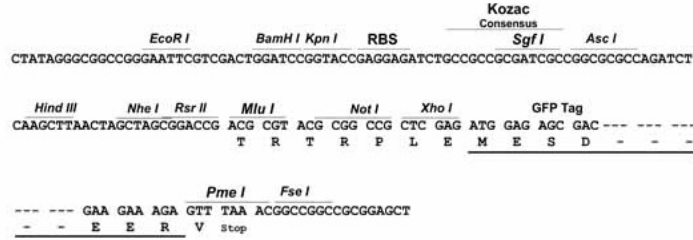
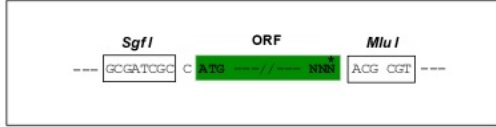


[View online >](#)

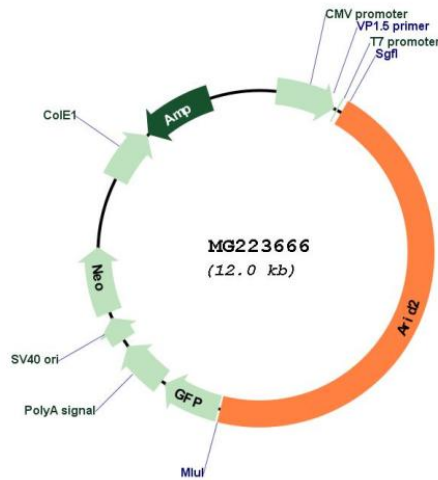
ACCCAGACCCACATAGCCTCCGGTCCAGCTTCCAGAGCAGTTGTAGCACAGCATGCTGCCCCCTCCAG
GAATCGTGGAAATAGACAGTGAGAAGTTCGCTTGTAGTGGTAAATGCTCATTTTGAAGTAAATCCAGA
CTGTTCCGTCTCTCGGGCAGAAATGATTACAGAGTACCTCTCAACTTGCAGTAAATAGCTCGCGGTGGC
ATCCTCACATCAACTGGGTTTTATAAGTGTCTTAGAACAGTTTTTCCAAATCATACAGTGAAGAGGGTAG
AAGATTCAGTACAGTGGGCAGGCGCATATCCATGTCATAGGAGTGAAGCGGCGGGCTCTCCGCTCCC
CATCCAGATGACTATCAGCAGCAGCAATTTCCACTCCTGTTGTCGGTGTGATGCTGTTGCTGATCTA
TCTCCAACCTCCTCACCTGCAGGAATCCCTCATGGACCACAGGCTGCAGGGAATCTTTTCAGAGGACT
CTGTACCAATCAATCTTCAAATTTGACTGCAACACAAATGTCTTTCCGGTACAAGGCATTCATACTGT
GGCACAGACTGTTTCCAGAATCCACCAATCCTTCAGTTCATACCCACCAGCAACAAAATCTCCAGTA
ACTGTCATTGAGAATAAAGCTCCAATCCTTGTGAAGTCGTTAAGGCAACAGTAATCCAGAATCTGTGC
CCCAGACGGCAGTTCCTGTGAGTATCTCTGTTGGAGGAGCACCTGCACAGAATCTGTGGGTGAGAACCA
TAGTGCAGGGCCACAGCCTGTTACAGTTGTAATTTCTCAGACATTACTTCACCATCCTTCTGTGATGCCA
CAGCCATCTCCACTACACACAGTGGTCCCGGACAGGTCCTTCAGGCACTCCTGTCACAGTAATCCAGC
AGACTGTACCGCAGAGTCGTATGTTGGACGAGTACAGAGCATACCAGCGTGTACATCTACCGTCTCACA
GGGTCAGCAGTTAATCACCACATCACCACAGCCTATGCACACTTCATCTCAACAGACAGCAGCTGGTAGC
CAGCCACAAGACTGTTATCATAGCACCCACAGTACGTAACAATCTGTCATCCAATATCGTCTCAG
CGACTTCAGTACAGAATTTCCAGGTAGCTACAGGACAGGTGGTTACCATAGCTGGTGTCCCGAGCCACA
GCCCTCCAGGGTAGGATTCCAGAATTCGCGCCAAGCCACTTCTTCTCAGCAAGTTTACCATCAGTG
GTCCAGCAGCCTATCAACAACCCACAGCAGCCTGCTCAGCAGAGTGTAGTGATTGTGAGCCAGCCAGCAC
AGCAAGGCCAGGCGTACGCACCAGCCATTCACCAGATCGTTCTCGCTAACCCGGCAGCTCTCCCTGCCGG
TCAGACGGTTCAGCTAACTGGACAACCAAACTAACTCCATCGTCATCACCATCAGTGTCCCGCTACT
AATAACCAAGTCCCTACTGCCATGTCATCTTCTCCACCCTTCAGTACAGGGACCCCTCTACTGTCA
GTCAGATGCTCTCTGTGAAGAGGCAGCAGCAGCAGCACTACCAGCAGCGCCAGCAGCAGTCCCA
GGTCAGGTTTCAGCAGCCGACAGGTCAGGTGCAAGTTCAGCCGACGCAACCGAGTGTGGGGTGGT
CAGCCTGCTCCCAACGAGTCTAGTCTCATCAAGCAGCTGCTGCTGCCAAAGCGGGGCCCTTCAACCCAG
GGGGCAAGCTTATCCTCCAGCCCTCAGATTCCTCCCTAACAAATGCAAGAGCTCCTAGCCCTCAGGT
GGTCTATCAGGTGGCCAATAACCAAGCAGCTGGTTTTGGAGTGCAGGGGCAAACTCCGGCTCAGCAGCTA
TTGGTTGGGCAGCAAAATGTTTCAGTTGGTCCAAAGTGAATGCCACCCGAGGGGAGTGCAAAACCGTGC
CCATTTGAACTTACAAATATTGCCGGTCCGCTGATCTCAAACAGCCAGCAACCATTTTCCAAGGGAC
TTCTGGCAACCAGGTAATAACAGTTGTGCCAAATACCAGTTTGAAGTGCAGTGTGAGTCAGGGA
AACGCTGCTCAGCTCATTGCGCCAGCCGGTCTTAGCATGAGCGGAGCGCAGGCAAGCGCTGGACTCAGG
TGACAGCCTTCCAGCCGACAATCAGCGTGTACCACTGCTCCCTCCCGTTCAAAGGCGACAAGATCAT
TTGCCAAAAGGAGGAGGAGGCAAGGAAGCAACAGGTCTACATGTTTCATGAACGGAAGATTGAGGTGATG
GAGAATCCTTCTGTGCGGCGAGGAACCAAAACACCAGCAACGGGGATACAAGTGAAGTGAAGTCCAGG
TGGGAAGTCTTTAAATGGGAGAAAGTATAGTGACTCAAGTCTACCTCCTTCAAAGTCCAGGGAACTTCA
GAGTGAGACGAGCCAGTGTCTACTAATCAGCAATGGGCCATCGTTGGAAGTGGTGAAGTGGAGCGCT
GGAAAACAGAAGTCCAGAACAGTACATGCAGGATGTCAAAGGTGATCTGAAAAAGCCCTCGTCAATG
GAATCTGTGATTTGATAAAGGAGATGGTCTCATTTAAGCAAAAACATCCAAATCACAAAATCTCTAA
TCATGTAGGAAAATGGTGAGATATCTCCAGTAGAACCAAGGACTTCGGGTGCCACTCAGCAAGATACT
GCCAAAGGTGACCAACTAGAAAGAGTTTCTAATGGACCTGTGTTAACTCTGGGTGGGTACCGTCCACAA
GAGTATGCAAGAAGCCCGAGTGTGGCGACACCGCCGTTGAGTGGTACTGACCTGCCTAACGGACCTCT
AGCTTCAAGTTTGAATTCAGATGTGCCTCAGCAACGCCCAAGTGTAGTTGTCTACCACATTCTACAGCC
CCTGTCATACAGGGGCATCAAGTCATAGCAGTTCCTCCACTCAGGACCTAGAGTGACCCCTTCTGCTCTAT
CATCTGATGCTCGGTCTACAAACGGCACAGCCGAGTGCAAACTGTAAAGAGGCCGAGAGGATAATGA
TAGGGACTGTCCCGGAATCCCAATAAAGTAGGGTTAGAATTGTTACAATCAGCGACCCCAACAAT
GCTGGCTGCAGTCAACCATGGTTGCGGTCCCAGCTGGAGCGGACCAAGCACTGTAGCGAAAGTAGCAA
TAGAAAGTGTGCTCAGCAAAAGCAGCAGCATCCACCGACCTACATGCAGAGTGTGGCCACAGAAACAC
TCCTATGCCACCTTACCAGCTGTACAAGTGCAGGGCCAGCCTAGCAGTTCTCAGCCTTCTCCAGTCAAGT
CGTCCAGTCAAGTGCAGATCCAGTGAAGAAAACCTGGGCAGAACTTCATGTGTCTGTGGCAGTCTTGTA
AAAAGTGGTTTACAGACTCCCTCACAAAGTGTCTATCATGCAGCTACTGAACATGGAGGAAAAGATGTGTA
TCCGGGGCAGTGTCTTTGGGAAGGCTGTGAGCCTTCCAACGGCAGAGGTTCTCTTTTATTACCACTTA
CAGGATAAGCACTGTTCAAAGGATGCCCTGCTTGCAAGATTAAGCAAGATGAACCAGGACAAGTGGCAA

Cloning Scheme:

Cloning sites used for ORF Shutting:



Plasmid Map:



ACCN: NM_175251

ORF Size: 5484 bp

OTI Disclaimer:	The molecular sequence of this clone aligns with the gene accession number as a point of reference only. However, individual transcript sequences of the same gene can differ through naturally occurring variations (e.g. polymorphisms), each with its own valid existence. This clone is substantially in agreement with the reference, but a complete review of all prevailing variants is recommended prior to use. More info
OTI Annotation:	This clone was engineered to express the complete ORF with an expression tag. Expression varies depending on the nature of the gene.
Components:	The ORF clone is ion-exchange column purified and shipped in a 2D barcoded Matrix tube containing 10ug of transfection-ready, dried plasmid DNA (reconstitute with 100 ul of water).
Reconstitution Method:	<ol style="list-style-type: none">1. Centrifuge at 5,000xg for 5min.2. Carefully open the tube and add 100ul of sterile water to dissolve the DNA.3. Close the tube and incubate for 10 minutes at room temperature.4. Briefly vortex the tube and then do a quick spin (less than 5000xg) to concentrate the liquid at the bottom.5. Store the suspended plasmid at -20°C. The DNA is stable for at least one year from date of shipping when stored at -20°C.
RefSeq:	NM_175251.4 , NP_780460.3
RefSeq Size:	9031 bp
RefSeq ORF:	5487 bp
Locus ID:	77044
UniProt ID:	E9Q7E2
Cytogenetics:	15 F1
Gene Summary:	Involved in transcriptional activation and repression of select genes by chromatin remodeling (alteration of DNA-nucleosome topology). Required for the stability of the SWI/SNF chromatin remodeling complex SWI/SNF-B (PBAF). May be involved in targeting the complex to different genes. May be involved in regulating transcriptional activation of cardiac genes. [UniProtKB/Swiss-Prot Function]