

Product datasheet for **MG223661**

Atp2b2 (NM_001036684) Mouse Tagged ORF Clone

Product data:

Product Type: Expression Plasmids
Product Name: Atp2b2 (NM_001036684) Mouse Tagged ORF Clone
Tag: TurboGFP
Symbol: Atp2b2
Synonyms: D6Abb2e; dfw; Gena300; jog; PMCA2; Tmy; wms; wri
Mammalian Cell Selection: Neomycin
Vector: pCMV6-AC-GFP (PS100010)
E. coli Selection: Ampicillin (100 ug/mL)
ORF Nucleotide Sequence: >MG223661 representing NM_001036684
 Red=Cloning site Blue=ORF Green=Tags(s)

TTTTGTAATACGACTCACTATAGGGCGGCCGGAATTCGTCGACTGGATCCGGTACCGAGGAGATCTGCC
 GCC**CGATCGCC**

ATGGGTGACATGACCAACAGCGACTTTTACTCCAAAACCAAAGAAATGAGTCGAGCCATGGGGCGGAGT
 TCGGGTGCACCATGGAGGAGCTGCGCTCCCTCATGGAGCTGCGGGGCACCGAGGCTGTGGTCAAGATCAA
 GGAGACGTATGGGGACACTGAAGCCATCTGCCGGCGCCTCAAACCTCGCCTGTTGAAGGTTTACCAGGC
 ACTGCTCCAGACTTGAAAAGAGGAAACAGATTTTGGGCAAACTTCATACCTCAAAGAAACCAAAAA
 CCTTCCTGCAGCTGGTGTGGGAAGCGCTACAGGACGTGACTTATCATCCTGGAGATCGCGGCCATCAT
 CTCCTGGGACTGCCTTCTACCACCCACCGGGAGAGCAATGAAGGATGTGCCACGGCCAGGGTGGG
 GCAGAGGATGAAGGTGAAGCAGAAGCAGGCTGGATTGAGGGGGCTGCCATCCTGTCTGTCAGTCATCTGTG
 TGGTCTGGTACAGCCTTCAATGACTGGAGTAAGGAGAAACAGTTCGGGGCCTGCAGAGCCGAATTGA
 GCAGGAGCAGAAGTTCAGTGTGGTCCGGGCCGGCCAGGTGGTTCAGATCCCTGTGGCCGAGATCGTGGTC
 GGGGACATTGCCAGATCAAATATGGTGACCTTCTCCGCTGATGGCCTTTCATCCAGGGAAATGACC
 TCAAAATTGATGAAAGCTCACTCACAGGGGAATCTGACCAGGTGCGCAAGTCTGTGGATAAGGACCCCAT
 GTTGCTGTCAGGAACCCATGTGATGGAGGGCTCAGGACGGATGGTGGTACTGCTGTGGGTGTAAGTCT
 CAGACTGGCATCATATTTACCCTGCTTGGGGCTGGTGGTGAAGAGGAAGAGAAGAAAGACAAAAAGCCA
 AGCAGCAGGATGGGGCAGCTGCCATGGAGATGCAGCCTCTGAAGAGTGCAGAGGGCGCGCATGCAGATGA
 CAAGAAGAAAGCCAACATGCACAAGAAAGAGAAGTCCGGTCTCAGGGCAAGCTACCAAACCTGGCTGTG
 CAGATAGGCAAGGCGGGCCTGGTGTGTCGGCCATCACAGTGATCATCCTGGTACTCTACTTCACCGTGG
 ACACCTTCGTGGTCAACAAGAAGCCATGGCTGACGGAATGCACACCCGTCTACGTACAGTACTTTGTCAA
 GTTCTTCATCATTGGTGTGACGGTGTGGTGGTGTGCTGTGCCGAGGGCCTCCCTCTGGCTGTACCATC
 TCACTGGCCTATTCTGTGAAGAAAATGATGAAGGACAACAACCTGGTACGCCACCTGGATGCCTGTGAGA
 CCATGGGCAATGCCACAGCCATCTGCTCAGACAAGACAGGAACGCTGACCACCAACCGCATGACCGTGGT
 CCAGGCCTATGTCGGTGACGTCCACTACAAGGAGATCCCCGATCCAGCTCCATCAATGCCAAGACGCTG



GAGCTGCTGGTCAACGCCATTGCCATCAACAGCGCCTACACCACCAAGATCCTTCCCCAGAAAAAGAGG
GAGCCCTGCCCGGCAGGTGGGCAACAAGACAGAGTGCAGCCTGCTGGGCTTTGTGCTGGACTTGAGGCA
GGACTACGAGCCGGTGCGCAGCCAGATGCCAGAGGAGAAGCTGTATAAGGTGTACACCTTCAACTCCGTG
CGCAAGTCCATGAGCACCGTCAATCAAGATGCCCCGACGAGAGCTTCCGCATGTACAGCAAGGGCGCCTCGG
AGATTGTGCTCAAAAAGTGTGCAAGATCCTCAGTGGGGCAGGGGAAGCCCGTGTCTCCGGCCCCGAGA
CAGGGATGAGATGGTTAAGAAGGTGATTGAGCCCATGGCCTGTGACGGGCTCCGTACCATCTGCGTGGCC
TATCGTGACTTCCCAGCAGCCCTGAGCCTGACTGGGACAATGAGAATGACATTCTCAATGAACCTCACGT
GCATCTGCGTGGTGGGCATCGAAGACCCAGTACGACCTGAGGTCCCAGAAGCCATCCGCAAGTGCCAGCG
GGCAGGTATCACAGTCCGCATGGTCACCGGTGACAATATCAACACAGCCCGGGCCATCGCCATCAAGTGT
GGCATTATCCACCCTGGAGAGGACTTCTGTGCCTGGAAGGCAAAGAATTCAATCGGAGGATTTCGCAACG
AGAAGGGGGAGATTGAGCAGGAGCGGATTGACAAGATCTGGCCAAAGCTGAGGGTGTGGCTCGCTCCTC
GCCACGGATAAGCACACGCTGGTCAAAGGCATCATCGACAGTACACACACTGAGCAGCGGCAGGTGGT
GCTGTGACAGGGGATGGGACCAACGACGGGCTGCTCTCAAGAAGGCAGATGTGGCTTCGCAATGGGCA
TCGCAGGCACAGATGTGGCCAAGGAGGCCTCAGACATCATCTGACAGATGACAACCTCAGCAGCATCGT
CAAGGCAGTGATGTGGGCGGTAAAGTCTATGACAGCATATCCAATTCCTGCAGTTCAGCTGACTGTC
AAGCTGGTGGCGGTGATCGTGGCCTTACGGGGCGCCTGCATTACACAGGACTCCCCTCTCAAGGCTGTGC
AGATGCTCTGGGTGAACCTCATCATGGACAGTTTGCCTCCCTGGCCCTGGCCACAGAGCCACCTACGGA
GACTCTGCTTCTGAGGAAACCGTACGGTCGCAACAAGCCGCTCATCTCGAGGACCATGATGAAGAATC
CTGGGCCACGCGTCTACCAGCTCACCTCATCTTACCCTGCTCTTCTGGGTGAGAAGATGTTCCAGA
TCGACAGCGGAAGGAACGCCCGCTGCACTCACACCCTCAGAGCACTACACCATCATCTTCAACACCTT
CGTCATGATGCAGCTTTTCAACGAGATCAACGCCCGCAAGATCCACGGCGAGCGCAACGTCTTTGACGGG
ATCTTCCGGAACCCATCTTCTGCACCATCGTTCTTGGCACTTTCGCCATCCAGATAGTGATCGTGCAGT
TTGGCGGGAAGCCCTTCACTGCTCCCCACTCCAGCTGGACCAGTGGATGTGGTGCATCTTCATAGGCT
GGGAGAGCTCGTCTGGGGCCAGGTCAATCGCCACCATCCCTACCAGCAGGCTCAAGTTCCTGAAAGAGGCA
GGGCGTCTAACACAGAAGGAGGAGATCCCCGAGGAGGAGTTAAATGAGGATGTGGAAGAGATAGACCACG
CAGAGCGGGAGCTTCGCCGTGGCCAGATCCTGTGGTTCGGGGCCTGAATCGGATCCAGACACAGATCCG
CGTCGTGAAGGCGTTCGGTAGCTCTCTATGAAGGGTTAGAAAAACCGAGTCTCGAACCTCCATCCAT
AACTTCATGGCTCATCTGAATTCGGATCGAAGATTCAGCCCCACATCCCCCTCATCGATGACACCG
ACCTGGAAGAAGATGCCGCGCTCAAGCAGAAGTCCAGCCCCGCTCCTCGCTCAACAAGAACAATAGCGC
CATCGACAGCGGGATCAACCTGACGACCGACACGAGCAAATCAGTACCTCTTCAAGTCCAGGGAGCCCC
ATCCACAGCCTGGAGACGTGCTT

ACGCGTACGCGGGCCGCTCGAG - GFP Tag - GTTTAA

Protein Sequence: >MG223661 representing NM_001036684
 Red=Cloning site Green=Tags(s)

```

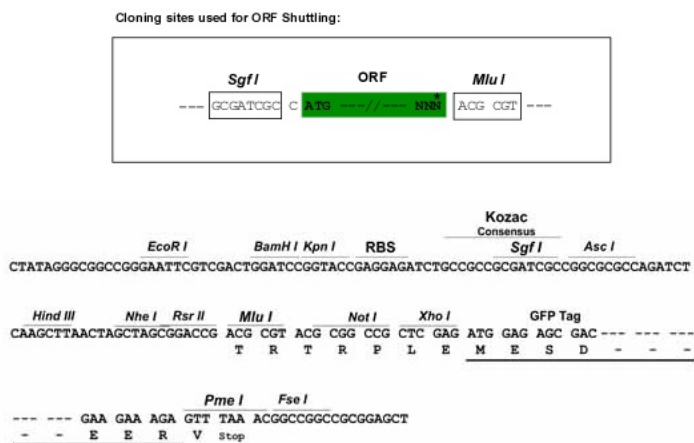
MGDMTNSDFYSKNQRNESSHGGEFGCTMEELRSLMELRGTEAVVVIKETYGDTEAICRRLKTSPEGLPG
TAPDLEKRKQIFGQNFIPPKPKTFLQLVWEALQDVTLIILEIAAIIISLGLSFYHPPGESNEGCATAQGG
AEDEGEAEAGWIEGAAIILLVICVVLVAFNDWSKEKQFRGLQSRIEQEQKFTVVRAGQVVQIPVAEIVV
GDIAQIKYGDLLPADGLFIQGNLKDIDESSLTGESDQVRKSVDKDPMLLSGTHVMEGSGRMVVTAVGVNS
QTGIIFTLTGAGEEEEKDKKAKQDGAAMEMQPLKSAEGGDADKKKANMHKKEKSVLQGLTKLAV
QIGKAGLVMSAITVIIILVLYFTVDTFVFNKPKWLTCTPVYVQYFVKFFIIGVTVLVAVPEGLPLAVTI
SLAYSVKMMKDNLLVRHLDACETMGNATAICSDKTGTLTNRMTVVQAYVGDVHYKEIPDPSSINAKTL
ELLVNAIAINSAYTTKILPPEKEGALPRQVGNKTECGLLGFVLDLRQDYEPVRSQMPEEKLYKVYTFNSV
RKMSTVIKMPDESFRMYSKGASEIVLKKCKILSGAGEARVFRPRDRDEMVKKVIEMACDGLRTICVA
YRDFPSSPEPDWDNENDILNELTCICVVGIEDPVRPEVPEAIRKCQRAGITVRMVTGDNINTARIAIAIKC
GIHPGEDFLCLEGKEFNRRIRNEKGEIEQERIDKIWPKLRVLRSSPTDKHTLVKGIIDSTHTEQRVV
AVTGDGTNDGPALKKADVGFAMGIAGTDVAKEASDIILTDDNFSSIVKAVMWGRNVYDSISKFLQQLTV
NVVAVIVAVFTGACITQDSPLKAVQMLWVNLIMDTFASLALATEPPTETLLLRKPYGRNKPLISRTMMKNI
LGHAVYQLTLIFTLFVGEKMFQIDSGRNAPLHSPSEHYTIIIFNTFVMMQLFNEINARKIHGERNVFDG
IFRNPIFCTIVLGTFAIQIVIVQFGGKPFSCSPLQLDQWMWCIFIGLGELVWQVIATIPTRKFLKEA
GRLTQKEEIPPEELNEDVEEIDHAERELRRGQILWFRGLNRIQTQIRVVKAFRSSLYEGLEKPESTRSIH
NFMHPEFRIEDSQPHIPLIDDDLEEDAALKQNSPPSSLNKNNSAIDSGINLTTDTSKSATSSSPGSP
IHSLETSL
    
```

TRTRPLE - GFP Tag - V

Chromatograms: https://cdn.origene.com/chromatograms/ja1899_e05.zip

Restriction Sites: SgfI-MluI

Cloning Scheme:

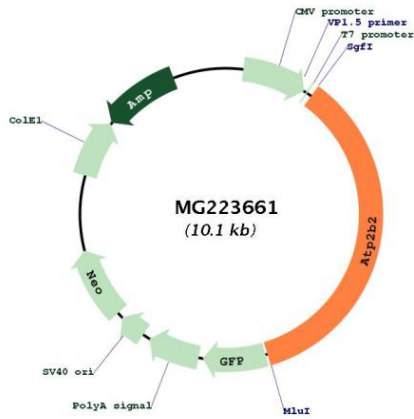


ACCN: NM_001036684

ORF Size: 3594 bp

OTI Disclaimer:	<p>Due to the inherent nature of this plasmid, standard methods to replicate additional amounts of DNA in E. coli are highly likely to result in mutations and/or rearrangements. Therefore, OriGene does not guarantee the capability to replicate this plasmid DNA. Additional amounts of DNA can be purchased from OriGene with batch-specific, full-sequence verification at a reduced cost. Please contact our customer care team at custsupport@origene.com or by calling 301.340.3188 option 3 for pricing and delivery.</p> <p>The molecular sequence of this clone aligns with the gene accession number as a point of reference only. However, individual transcript sequences of the same gene can differ through naturally occurring variations (e.g. polymorphisms), each with its own valid existence. This clone is substantially in agreement with the reference, but a complete review of all prevailing variants is recommended prior to use. More info</p>
OTI Annotation:	This clone was engineered to express the complete ORF with an expression tag. Expression varies depending on the nature of the gene.
Components:	The ORF clone is ion-exchange column purified and shipped in a 2D barcoded Matrix tube containing 10ug of transfection-ready, dried plasmid DNA (reconstitute with 100 ul of water).
Reconstitution Method:	<ol style="list-style-type: none"> 1. Centrifuge at 5,000xg for 5min. 2. Carefully open the tube and add 100ul of sterile water to dissolve the DNA. 3. Close the tube and incubate for 10 minutes at room temperature. 4. Briefly vortex the tube and then do a quick spin (less than 5000xg) to concentrate the liquid at the bottom. 5. Store the suspended plasmid at -20°C. The DNA is stable for at least one year from date of shipping when stored at -20°C.
Note:	Plasmids are not sterile. For experiments where strict sterility is required, filtration with 0.22um filter is required.
RefSeq:	NM_001036684.3
RefSeq Size:	6925 bp
RefSeq ORF:	3597 bp
Locus ID:	11941
UniProt ID:	Q9R0K7
Cytogenetics:	6 52.85 cM
Gene Summary:	This magnesium-dependent enzyme catalyzes the hydrolysis of ATP coupled with the transport of calcium out of the cell. Plays a role in maintaining balance and hearing. [UniProtKB/Swiss-Prot Function]

Product images:



Circular map for MG223661