

Product datasheet for **MG223659**

Alg6 (NM_001081264) Mouse Tagged ORF Clone

Product data:

Product Type:	Expression Plasmids
Product Name:	Alg6 (NM_001081264) Mouse Tagged ORF Clone
Tag:	TurboGFP
Symbol:	Alg6
Synonyms:	E230028F23Rik
Mammalian Cell Selection:	Neomycin
Vector:	pCMV6-AC-GFP (PS100010)
E. coli Selection:	Ampicillin (100 ug/mL)



[View online »](#)

ORF Nucleotide Sequence:

>MG223659 representing NM_001081264
 Red=Cloning site Blue=ORF Green=Tags(s)

TTTTGTAATACGACTCACTATAGGGCGGCCGGAATTCGTCGACTGGATCCGGTACCGAGGAGATCTGCC
 GCC**CGGATCGCC**

ATGGAGAGCTGGCCGTGGATGGCAGTCGTGGTCTTACTAGGACTTACGGTGCCGTGGACGGTCTCTCTCA
 GTTCTACTCAGGTGCTGGAAAACCACCTATGTTTGGTATTATGAAGCTCAGAGGCACTGGCAGGAAAT
 TACCCTTAATTTACCAGTCAAACAGTGGTATTTAACAGTAGTGATAACAATTTACTGTACTGGGGATTG
 GATTACCCACCTTTACGGCCTATCATAGCCTCTTATGTGCATATGTGGCAAAGTTATAAAACCAGACT
 GGGTTGCTCTCCACACATCACGAGGCTATGAGAGTCAGGCACACAAGCTCTTCATGCGTGCCACAGTTCT
 TGCTGCTGATTTGCTCATTTACGTACCCGCGGTGCTTTTGTACTGTTACTCCTTAAAAGAAATCTCACCT
 AAGAGAAAGATTGCTAGTGCCTATGCATATTGCTGTATCCAGGCTTATTCTTATCGACTATGGACATT
 TTCAATAAATTCTGTGAGTCTTGGCTTTCGCTTGTGGGGTGTCTTGGAGTATCTTGGGACTGGGACCT
 GCTAGGGTCACTGGCATTGCTTAGCTCTAAATTATAAGCAGATGGAACCTTACCCTCCCTGCCATTT
 TTTTGCTTTTACTTGGCAAGTGTAAAAAAGGCCCTCAAAGGAAAGGGGCTTGCATTGTTCAATTAGGA
 TAGCCTGTACTGTCTGGCTTCTTCTCTGTGTTGGCTGCCGTTCTTGACAGAAAGGGAGCATGCCCT
 GCAGGTTGTTAGAAGACTCTCCCTGTTGACCGTGGACTGTTGAGGATAAAGTCGCTAATATTTGGTGC
 AGCGTTAATGTCTTTCTGAAGATTAAGGACACTTGCCTCGCCACATCCAGATAGCGATCAGCTTTTGT
 TTACACTTTTGAGCTTGCTTCTGCATGTATAAACTGACAGTTCGACCTCTTGTAAAGGATTCAGATT
 TACTCTGGTTAGCTGTGCGCTATCATTCTTTCTGTTTTCTTCCAAGTACATGAAAGTCCATTCTCTTG
 GTATCATTACCAGTTGCTTAGTTTTAACTGAAATTCCTTTCATGTCAACCTGGTTTTTACTAGTTTCAA
 CATTTAGCATGCTGCCTCTTCTATAAAGGATGAACTCCTGCTGCCCTCGGTTGTGACAGTGGGCATT
 TGTAATAGCTTGTGGCACTTTCTTCCAATGTTGGAGAACAACCTCCGAAGAACAACCTGCAGTTGAAGTCC
 TTTGCTGTCTGTAAAGGAGCACCTTCCGGGCTTACATTTTTGCCAGAATTATGCAGTGTGTTGTTTC
 TTTCTTACGTATCACCATGGTCTCCTGACGATTTTGTAGTGTAACTGGACCTCCTCAGAAATTACC
 AGACTTGTCTGACTTATATGTTTTGTTCTGTGTAATTTGTATTCTTCTTGGTATACTTTAAT
 ATTGTAATCATGTGGATTCCAAAAATGGAAGAAATCGGAAGAAAATTGAG

ACGCGTACGCGGCCGCTCGAG – GFP Tag – GTTTAA

Protein Sequence:

>MG223659 representing NM_001081264
 Red=Cloning site Green=Tags(s)

MESWPWMAVVVLLGLTVRWTVSLSSYSYAGKPPMFGDYEQRHWQEITLNLVVKQWYFNSSDNNLLYWGL
 DYPPLTAYHSLLCAYVAKFINPDWVALHTSRGYESQAHKLFMRATVLAADLLIYVAVLLYCYSLKEISP
 KRKIASALCILLYPLILIDYGHFYQNSVSLGFALWGVLGVSWDWDLGSLAFCLALNYQMELYHSLPF
 FCFLLGKCFKKGLKGLALFIRIACVLAFLCWLPLTEREHALQVRRLLFPVDRGLFEDKVANIWC
 SVNVFLKIKDTLPRHIQIAISFCFTLLSLLPACIKLTVRPSCKGFRFTLVSCALSFLLFSFQVHEKSILL
 VSLPVCLVLEIPFMSTWFLVSTFSLPLLLKDELLPSVVTVMFVIACGTFPMLENTSEEQLQLKS
 FAVSVRRHLPGFFLPRIMQCLFLSSVITMVLILTILSVTLDPQKLPDLFPVLICFVSCVNFVFFLVYFN
 IVIMWDSKNGRNRKKIE

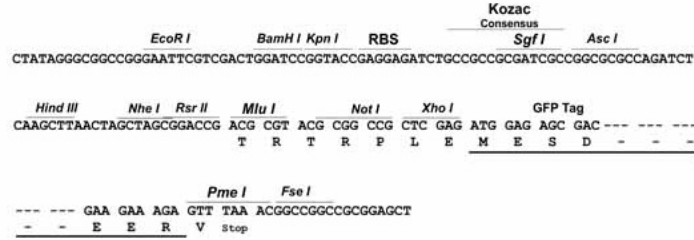
TRTRPLE – GFP Tag – V

Restriction Sites:

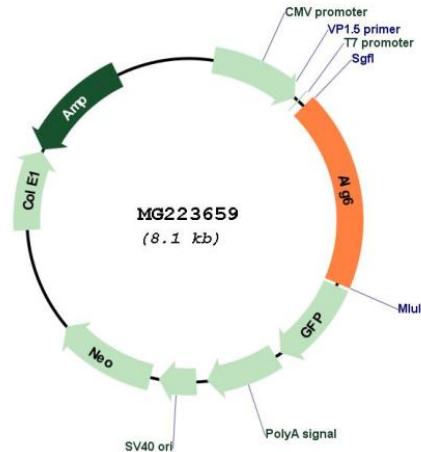
Sgfl-Mlul

Cloning Scheme:

Cloning sites used for ORF Shutting:



Plasmid Map:



ACCN: NM_001081264

ORF Size: 1521 bp

OTI Disclaimer: The molecular sequence of this clone aligns with the gene accession number as a point of reference only. However, individual transcript sequences of the same gene can differ through naturally occurring variations (e.g. polymorphisms), each with its own valid existence. This clone is substantially in agreement with the reference, but a complete review of all prevailing variants is recommended prior to use. [More info](#)

OTI Annotation: This clone was engineered to express the complete ORF with an expression tag. Expression varies depending on the nature of the gene.

Components: The ORF clone is ion-exchange column purified and shipped in a 2D barcoded Matrix tube containing 10ug of transfection-ready, dried plasmid DNA (reconstitute with 100 ul of water).

Reconstitution Method:

1. Centrifuge at 5,000xg for 5min.
2. Carefully open the tube and add 100ul of sterile water to dissolve the DNA.
3. Close the tube and incubate for 10 minutes at room temperature.
4. Briefly vortex the tube and then do a quick spin (less than 5000xg) to concentrate the liquid at the bottom.
5. Store the suspended plasmid at -20°C. The DNA is stable for at least one year from date of shipping when stored at -20°C.

RefSeq: [NM_001081264.1](#), [NP_001074733.1](#)

RefSeq Size: 3114 bp

RefSeq ORF: 1524 bp

Locus ID: 320438

UniProt ID: [Q3TAE8](#)

Cytogenetics: 4 C6

Gene Summary: Adds the first glucose residue to the lipid-linked oligosaccharide precursor for N-linked glycosylation. Transfers glucose from dolichyl phosphate glucose (Dol-P-Glc) onto the lipid-linked oligosaccharide Man(9)GlcNAc(2)-PP-Dol (By similarity).[UniProtKB/Swiss-Prot Function]