

Product datasheet for **MG223644**

Egr4 (NM_020596) Mouse Tagged ORF Clone

Product data:

Product Type:	Expression Plasmids
Product Name:	Egr4 (NM_020596) Mouse Tagged ORF Clone
Tag:	TurboGFP
Symbol:	Egr4
Synonyms:	NGF1-C; NGFI-C; NGFIC; pAT133
Mammalian Cell Selection:	Neomycin
Vector:	pCMV6-AC-GFP (PS100010)
E. coli Selection:	Ampicillin (100 ug/mL)



[View online »](#)

ORF Nucleotide Sequence:

>MG223644 representing NM_020596
 Red=Cloning site Blue=ORF Green=Tags(s)

TTTTGTAATACGACTCACTATAGGGCGGCCGGGAATTCGTCGACTGGATCCGGTACCGAGGAGATCTGCC
 GCC**CGCATCGCC**

ATGCTCCACCTGAGCGACTTCTCCGGCTCCGACGCGCTTCTCTCCAAGCCACCGAAGGCTGCGCCACG
 CCAGCCCCGAGCTGCCCGGCTGCCTGCTAGGGACGCTCCCTCGCCCGCGGTATCCTGGAGGCGACTT
 CTTGAGCTGGGCTTTGAGCAGCTGCGGCCCGGGGGGACTTAACAGACTCCTGCTTCTGGAGGGCCCT
 GCACCCACGCCCTTCGGGCTCAGCTACAGCGGCAGCTTCTTCATCCAGGCGGTTCCCGAACACCCGC
 ACGACCCGGAGGCCCTTCAACCTCATGTCTGGCATCTTGGGCTGGCACCCCTCCCGGTCCCGAGGC
 GGCAGCGTCTCGGTCCCCCTGGATGTCCCTTCCCGCGGGCCCGATGCCTTGTGCCGGACCTAC
 TCCCCAGATCTGAGTTCGGCCGCTTCCGGAGGCGTTTTGGGAGGCAGCGCCTTCGGCGGGCGCTCCCT
 CGCAGTGCCTGTTGAGCCCCAGCTCTCCCGCCGACGTCAGCCAGGGCTGCGGGCGCTCCCGCTTC
 GCCAGCGCTGGAGCTGTGCTTCAAGCCCTCAAGGGCCCTATGCCCTGGGAGCTGTGTGCGCCGGG
 GTCCCGGGAAGTGTGGTGCAGGGGAGCTTCCAGACCACCCCGAGGCCCGCTTCTCTGAGTAGGGA
 CCAAGGTCGAGGACCTGTGTCCATCAGCTGCCCGCCGAGCTGCCCGGCCCGGCCAGACTCTACCA
 GGCAGGGGCTACGACACCTTCTCGTTGGCCCCAGGTGACTTAGGGGAGGGGACCGAGGGCTCCCGCG
 CTGCTGACCCCTCCCGCGGGGAGGGAGGGAGCGCGCGCAAGGCGGAGAGTTCTCGCCGCCCTCCG
 CGCAGCTGTCCCTCTAGGCTGCGCGGTGCCGCCACGGCGGACTTCTCAAACCCTGGTGGCCGATCT
 CCCGGGGGACGCGCGTGGCCGCGCCATCCCGCCGCATCCTTCCCGCGGCCAAAGCCGACGC
 AAGGGACGCCGGGCGCAAGTGCAGCGCGCTGCTTCTGCCCGCGCCGACGTCAGCCACCTGCGCATCCAC
 GGGCCACAAGCCCTTCCAGTCCGATCTGCCTGCGCAACTTCAGCCGACGACACCTACCACGCAC
 GTGCGCACCCACAGGGGAGAAGCCCTTCGCTGCGACGTGTGTGGCCCGCTTCGCGCGCAGTGACG
 AGAAGAAACGGCACAGCAAGGTGCACCTAAAGCAGAAGGCGCGCGGAGGAGCGCTCAAGGGCTGG
 CTTCTACTCGCTGGGCTCTCTTCGCCGCGCTG

ACGCGTACGCGGCCGCTCGAG - GFP Tag - GTTTAA

Protein Sequence:

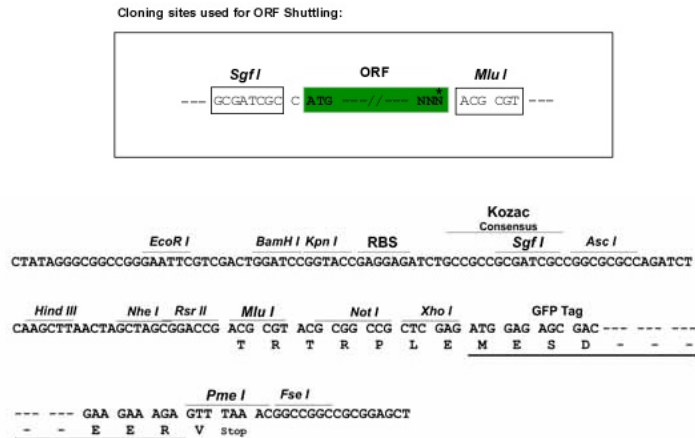
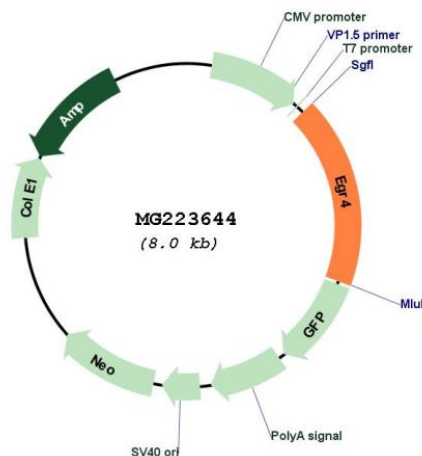
>MG223644 representing NM_020596
 Red=Cloning site Green=Tags(s)

MLHLSDFSGSDALLSKPTEGCAHASPELPRLPARDAPSAAYPGGDFLSWALSSCGAGGDLTDSFLEGP
 APTPPSGLSYSGSFFIQAVPEHPHDPEALFNLMGILGLAPFPGEAAASRSPLDVFPAGPDALLPDLY
 SPDLSAAFPEAFWEAAPSAGAPSQCLFEPQLSPPDVKPLRAPPASPALDAAASAFKGPYAPWELL SAG
 VPGNCSQGSFQTTPEARFSAVGTKVEDLLSISCPAELPGPAARLYQAGAYDTFSLAPGDLGEGTEGLPA
 LLTPPGEGGSGGEGEFLAAPPQLSPLGLRGAATADF SKPLVADLPGGSGVAAPSSPAASFPAAKARR
 KGRRGGKCSARCFPRPHVKAFACPVESCVRSFARSDELNRHLRIHTGHKPFQCRICLRNFSRSDHLTTH
 VRHTTGEKPFACDVCGRRFARSDEKKRHSKVHLKQKARAEERLKGLGFYSLGLSFAAL

TRTRPLE - GFP Tag - V

Restriction Sites:

Sgfl-MluI

Cloning Scheme:

Plasmid Map:


ACCN: NM_020596

ORF Size: 1434 bp

OTI Disclaimer: The molecular sequence of this clone aligns with the gene accession number as a point of reference only. However, individual transcript sequences of the same gene can differ through naturally occurring variations (e.g. polymorphisms), each with its own valid existence. This clone is substantially in agreement with the reference, but a complete review of all prevailing variants is recommended prior to use. [More info](#)

OTI Annotation: This clone was engineered to express the complete ORF with an expression tag. Expression varies depending on the nature of the gene.

Components: The ORF clone is ion-exchange column purified and shipped in a 2D barcoded Matrix tube containing 10ug of transfection-ready, dried plasmid DNA (reconstitute with 100 ul of water).

Reconstitution Method:

1. Centrifuge at 5,000xg for 5min.
2. Carefully open the tube and add 100ul of sterile water to dissolve the DNA.
3. Close the tube and incubate for 10 minutes at room temperature.
4. Briefly vortex the tube and then do a quick spin (less than 5000xg) to concentrate the liquid at the bottom.
5. Store the suspended plasmid at -20°C. The DNA is stable for at least one year from date of shipping when stored at -20°C.

RefSeq: [NM_020596.3](#)

RefSeq Size: 2100 bp

RefSeq ORF: 1437 bp

Locus ID: 13656

UniProt ID: [Q9WUF2](#)

Cytogenetics: 6 37.48 cM

Gene Summary: Transcriptional regulator. Recognizes and binds to the DNA sequence 5'-GCGGGGCG-3' (GSG). Activates the transcription of target genes whose products are required for mitogenesis and differentiation (By similarity).[UniProtKB/Swiss-Prot Function]