

Product datasheet for **MG223643**

Gh (NM_008117) Mouse Tagged ORF Clone

Product data:

Product Type:	Expression Plasmids
Product Name:	Gh (NM_008117) Mouse Tagged ORF Clone
Tag:	TurboGFP
Symbol:	Gh
Synonyms:	Gh1; Ghb1
Mammalian Cell Selection:	Neomycin
Vector:	pCMV6-AC-GFP (PS100010)
E. coli Selection:	Ampicillin (100 ug/mL)
ORF Nucleotide Sequence:	>MG223643 representing NM_008117 Red=Cloning site Blue=ORF Green=Tags(s)

TTTTGTAATACGACTCACTATAGGGCGGCCGGAATTCGTCGACTGGATCCGGTACCGAGGAGATCTGCC
GCC**CGATCGCC**

ATGGCTACAGACTCTCGGACCTCCTGGCTCCTGACCGTCAGCCTGCTCTGCCTGCTCTGGCCTCAGGAGG
CTAGTGTCTTTCCCGCCATGCCCTTGCCAGTCTGTTTTCTAATGCTGTGCTCCGAGCCAGCACCTGCA
CCAGCTGGCTGCTGACACCTACAAAGAGTTCGAGCGTGCCTACATCCCGAGGGACAGCGCTATTCCATT
CAGAATGCCAGGCTGCTTCTGCTTCTCAGAGACCATCCGGCCCCACAGGCAAGGAGGAGGCCACAGC
AGAGAACCACATGGAATTGCTTCGCTTCTCGCTGCTGCTCATCCAGTCATGGCTGGGGCCCGTGCAGTT
CCTCAGCAGGATTTTACCAACAGCCTGATGTTTCGGCACCTCGGACCGTGTCTATGAGAACTGAAGGAC
CTGGAAGAGGGCATCCAGGCTCTGATGCAGGAGCTGGAAGATGGCAGCCCCCGTGTGGGAGATCCTCA
AGCAAACCTATGACAAGTTTGACGCCAACATGCGCAGCGACGACGCGTCTCAAAAATATGGGCTGCT
CTCCTGCTTCAAGAAGGACCTGCACAAAGCGGAGACCTACCTGCGGGTCATGAAGTGTCCCGCTTTGTG
GAAAGCAGCTGTGCCTTC

ACGCGTACGCGGCCGCTCGAG - GFP Tag - GTTTAA



[View online »](#)

Protein Sequence: >MG223643 representing NM_008117
 Red=Cloning site Green=Tags(s)

MATDSRTSWLLTVSLLCLLWPQEASAFPAMPLSSLSFNAVLRAQHLHQLAADTYKEFERAYIPEGQRYSI
 QNAQA AFCSETIPAPTGKEEAQQRDMELLRFLLLLIQSWLGPVQFLSRIFTNSLMFGTSDRVYEKLD
 LEEGIQALMQELEDGSPRVGQILKQTYDKFDANMRSDDALLKKNYGLLSCFKKDLHKAETYLRVMKCRRFV
 ESSCAF

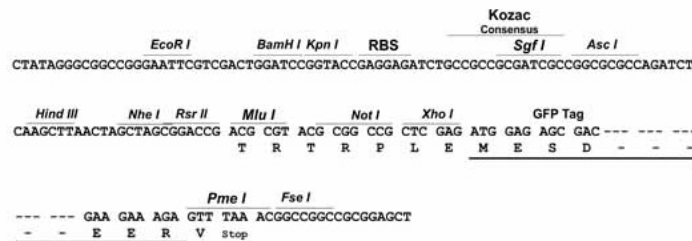
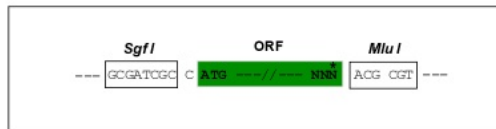
TRTRPLE - GFP Tag - V

Chromatograms: https://cdn.origene.com/chromatograms/ja1791_b06.zip

Restriction Sites: SgfI-MluI

Cloning Scheme:

Cloning sites used for ORF Shuttling:



ACCN: NM_008117

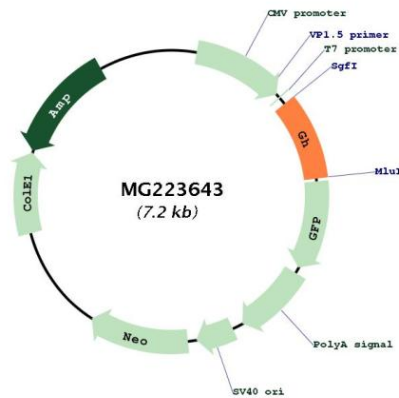
ORF Size: 648 bp

OTI Disclaimer: Due to the inherent nature of this plasmid, standard methods to replicate additional amounts of DNA in E. coli are highly likely to result in mutations and/or rearrangements. Therefore, OriGene does not guarantee the capability to replicate this plasmid DNA. Additional amounts of DNA can be purchased from OriGene with batch-specific, full-sequence verification at a reduced cost. Please contact our customer care team at custsupport@origene.com or by calling 301.340.3188 option 3 for pricing and delivery.

The molecular sequence of this clone aligns with the gene accession number as a point of reference only. However, individual transcript sequences of the same gene can differ through naturally occurring variations (e.g. polymorphisms), each with its own valid existence. This clone is substantially in agreement with the reference, but a complete review of all prevailing variants is recommended prior to use. [More info](#)

OTI Annotation: This clone was engineered to express the complete ORF with an expression tag. Expression varies depending on the nature of the gene.

Components:	The ORF clone is ion-exchange column purified and shipped in a 2D barcoded Matrix tube containing 10ug of transfection-ready, dried plasmid DNA (reconstitute with 100 ul of water).
Reconstitution Method:	<ol style="list-style-type: none"> 1. Centrifuge at 5,000xg for 5min. 2. Carefully open the tube and add 100ul of sterile water to dissolve the DNA. 3. Close the tube and incubate for 10 minutes at room temperature. 4. Briefly vortex the tube and then do a quick spin (less than 5000xg) to concentrate the liquid at the bottom. 5. Store the suspended plasmid at -20°C. The DNA is stable for at least one year from date of shipping when stored at -20°C.
RefSeq:	<u>NM_008117.3</u>
RefSeq Size:	935 bp
RefSeq ORF:	651 bp
Locus ID:	14599
UniProt ID:	<u>P06880</u>
Cytogenetics:	11 68.89 cM
Gene Summary:	Plays an important role in growth control. Its major role in stimulating body growth is to stimulate the liver and other tissues to secrete IGF-1. It stimulates both the differentiation and proliferation of myoblasts. It also stimulates amino acid uptake and protein synthesis in muscle and other tissues.[UniProtKB/Swiss-Prot Function]

Product images:


Circular map for MG223643