

Product datasheet for **MG223638**

Dnmbp (NM_028029) Mouse Tagged ORF Clone

Product data:

Product Type:	Expression Plasmids
Product Name:	Dnmbp (NM_028029) Mouse Tagged ORF Clone
Tag:	TurboGFP
Symbol:	Dnmbp
Synonyms:	2410003L07Rik; 2410003M15Rik; Tub; TUBA
Mammalian Cell Selection:	Neomycin
Vector:	pCMV6-AC-GFP (PS100010)
E. coli Selection:	Ampicillin (100 ug/mL)
ORF Nucleotide Sequence:	>MG223638 representing NM_028029 Red=Cloning site Blue=ORF Green=Tags(s)

TTTTGTAATACGACTCACTATAGGGCGGCCGGAATTCGTCGACTGGATCCGGTACCGAGGAGATCTGCC
GCC**CGATCGCC**

ATGGAGCCTGGATCCATGGTCCGAGCCATCTTTGACTTCTGCCCTAGCGTCTCAGAGGAAGTCCACTCT
TCGTGGGGACGTTATTGAGGTGCTGGCCGTGGTGGATGAATTTGGCTCCTAGGGAAGAAGGAAGATGT
TACAGGACAGTCCCCAGCAGTTTTGTGGAGATCGTGACAATCCAGTCTGAAAGAGGGCGAGAGGCTG
TTTGTCTGCATCTGCGAATTCGATCTCGAGAGCTGAACAGTCTTCCCTCCATCGGGGAGACCTGGTGA
TTCTCGACGACAGCGCTCCCACTGCAGGATGGCTGCAGGGCCGAAGCTGCTGGGGCGCTTGGGGCTCTT
CCCATCCTCCTGTGTCCAGGAGCTCTGCCTCTCCTCTCGGAGCCGACGCTGGCACGCACAGAGTGGGTTG
CTTCAGGCCCCAGAGTACTCCCTGGGACAAGCACGGGCCCTCATGGGCCCTTCTGCCAGTTGGACGAGG
AGTTGGATTTTCAGGGAAGGAGACCTGATCACCATTATCGGGGTTCTGAGCCGGGCTGGTTTGAGGGAGA
GTTAGAGGGTCGGAGGGGCATTTCCAGAAAGTTTTGTAGAGCTGCTGGGGCCCTAAGGACTGTGGAT
GAGTCCGTAACCTCCAGAAGTGGAGATGACTCCGCTGTCAACGGTGAGGTGGATGTCCCTCCAGAAGAAG
CAGAGAGTGGAGGCGACGAGGACGACCAGCAGTCCGGGACCTATGGAATCGCCCTACAGATCCAAGC
CCTGGAGACGAATGAGTTGGACTTTGAGGTAGGGGACAGAATCAAACTGGGGACCTTGGAGGATGCC
TGGCTGGAAGGATGCTGAAGGGCAAGACAGGGTCTTTCCCATCGCTTGTGAAGTTATGTCCTAGCA
ACAGGACAGAGGAACCACGGCTCAGCCCAGGAAGCAGTTTTCCCAAGGACTCTGAAAGCTCTGTGGG
CAAGTCAGGGGACTCCGTGGTGGAGGAAGCAAGACAGGAACCATGGGAGTGTGAAGAAGAAGACCTGAC
TATGATCTCCAGGACAAGCCTCCGTGCCCAAGATCACGTAGCACCCGAGTGGACTGGAGATACGATCT
CAGGTCAGGATAAAGATGCTTCAGGGAGCTCTCCTGATGTGGATCTTGAAGGCCCTTGTCTAAAGACCT
TTCCACACCTGACCCCTCAGAGGAAGTCAACGGTGTCTTCCAGCCTCAGGTACCTATTCATCCAAA
GTGCAGAAGAGCCAACACTATCTAACAGCAGGAGGGAGCCACAAACCTCTGACCCATTCTGAGCTTG
TCCCACTAGAAGCCAGGACCAGAGACTACTCCAGCCTGCCTCTAGAAGAACATACGCCAAGGTTGGTC
ATTCCAGAAGCCAGCGTCCACCTCCAGAGGGCCTTCCCTTACAGCCTCAAGGCTAGACAGCCAGC



[View online »](#)

CACTTTTGCCATCCAGCCATGGCCAGCTATGCTCAGAAGCACAAACATCTACAGAAAATACTGCCAGCC
 TCCACGATCCACCAGAGAGACCAGAGAGAAGGCCTGGCTTACAAGACAGGGGGCCTGCCACAGATAAAC
 CACAGCGTCACAGGGGGACAGCCTGGACCTAGATTCCAAGTTGACCCAACAGCTGATAGAGTTTGAGAAG
 AGTCTGTAGGGCCAGCACAGAGCCAGAGACGATTGTACGCCGCTTTTCAATCATGGACTTTTACTCTG
 AGAAGGATATCGTGAGAGGCTCCTCAAATTCACTACCCCTCACAGGCTTTCCCGAGAGGAGAAAGACCCCT
 GAGGCCACCACCTCCTAGACCCCGTACCCCAACACCCATTTCTCCCACTTGCTAGTTGACCAGAGCCCG
 AAACGTGACCCACCTTGGTTGTGCGGCCCTCCGACCAGCTCCTCTGCCTCCTCTGCCAGCAGAGGA
 TGAATACGGCCTCCCCAAGCCACCTCCTGTGCCATCCTGGCTGGGAGGCCCCAGAGAAGGAGGACTC
 TGAGCACATGGAGAAGAGCCAGCCAGACTTTTCCGTGCCCTCCATGCTGGCAAGGATCCGGGACGTG
 GAACAGGACCTGGACACGTGTACCAGGGCTCAGGAAGAGCTGAACCTTGCTGTTGGAGAAAAGCAAGATG
 ACCCGTCGAGGGCAGAGACTCTTGAGACTCTCAGATCCTACGAGAGCACCATTAGAGCCTGACCCTGGA
 GCTTCAGCAGCTGAGAGACATGACGCTCCTCTTCCAGTCTTCATCCCTGGCGGCCCTTTGGGTCT
 GTGTCCACTGAAAACCCAGAGCAGAGGATGCTGGAGAAGAGAGCCAAGGTGGTGGCGGAGCTTTTGAGA
 CGGAGAGAGACTACATCCGGGATCTGGAGATGTGCATTGAGAGGGTCATGGTGGCCCTGCAGCAGGCACA
 GGTACCAAACGTTGATTTTGAAGGACTTTTGGAAATATGCAAACAGTGATTAAGTCTCAAAGCAATTG
 TTGGCGGCCTTGAAATCAGCGATGCTGTAGGTATGAGCTCATGCGATTGTTGGTCCCAGGACCCGTGT
 TTCTTGACCACCAGACGAGCTTGAGGGAACGTACAGGGTTTACTGCCAGAACCAGATGAAGCCATCTC
 CCTGCTGGAAATGATGAGAAGGACGAGAAGACCCAGAAGCACCTTACAGGACTACCTGGCAGATCTCAAG
 GGATGCACCAATTACATCAACCTGGGCTCCTTCTCATCAAGCCCGTACAGAGAATAATGCGTTACCCGC
 TGCTGCTGATGGAGTTGCTGAATTCACCCCAAGTCCACCCGGATAAAGTGCTTTAACCAACGCGGT
 CCTCGCGTCAAGGAGATCAATGTTAACATTAATGAGTACAAGCGTCGGAAGGATCTGGTGTAAAGTAC
 CGCAAAGGGGATGAAGATAGCCTGATGGAAAAGATCTCCAAGTGAACATACACTCCATCATCAAGAAGT
 CCAGCCGCTTAGCAGCCACCTCAAACACCTACTGGCTTCGCTCCGAGCTAAAAGATGAAGTATTTGA
 AGAGACAGAAAAGAACTTCCGGATGCAGGAGAGATTGATTAATCTTTTATCCGAGACCTGTCCCTCTAC
 CTCCAGCATATACGGGAATCTGCATGTGTGAAGGTGGTGGCAGCCATGAGCATATGGGATCTGTGCATGG
 AGAGGGGACATCATGACCTGGAGCAGTTCGAGAAGGTGCATCGCTACATCAGTGACCAGCTCTTACACG
 GTTTAAAGAGAGGACCGAGCGGCTCGTCATCAATCCCTTAAACCAGTTGTTGAACATGTTACGCGGGCC
 TACAAGCTGGTGCAGAAGCGTTTCGACAAGCTCCTGGACTTCTACAAGTGCAGTGCAGCGAGCGGAGAAGC
 TGAAGGACAAGAAGACTCTGGAGGAGCTGCAGTCAGCCCGAAACAACACGAGGCCCTGAACTCGCAGCT
 GCTGGACGAGCTGCCAAGTTCACGAGTACGCCAGAGCCTCTTACCAACTGCATCCACGGCTATGCC
 GAAGCCACTGTGACTTCGTGCAGCAAGCCCTGGAGCAGCTGCAGCCGCTGCTGTGCTTACTGAAAGCCA
 CCGACCGAGAAGGCAACTTGATCGCCATCTTCTTGGAGGACACAGCCGGGTGCTACAGCAGCTCCAGGT
 CTTACATTTCTCCCGAGTCCCTCCCAGCGCCAGGAAGCCCTTTGAGAGGAAAACCACAGACCCCGCAG
 TCATCCCGGAAGACCTTCTGGGCATGCCAAGCTACATGCTGCAGTCGGAAGAGCTGCGGAGCTCCCTGC
 TGGCGAGGTACCCGCGGAAAAGCTCTTCCACGTCCAGCGGAACCTCAACGCTGCGCAGGACTTGGATGT
 CTCCCTTTTGAAGGCGACCTGGTGGGCGTGATCAAAAAGAAAGACCCCATGGGCAGCCAGAACCCGCTGG
 CTCGTGGACAACGGAGTACCAAAGGCTTTGTCTACAGCTCCTTCTGAAGCCTTACAATCCTCGCTGCA
 GCCATTCGGATGCCTCCGTGGCCAGCCACTCCTCCAGGAGTACAGACACAGTGGCTCCTCCCCGGGTG
 CCATCGCAGAGAACAGCCACAGTGCCTTGACCTTCAACTCCAACAACATGACTGTGCTTCACTCAGGA
 CTTGCCCTAACGCAGCCTCAGGATGCATCTCCACTGAAGGACTGTGCCACGAAAACCTCTCGCTGTGCTCT
 GGAACACAGGGCATCCAGAGACTGGACCTTCCACGTGCTCTTCCGACCCAGGCTTTTCTGCCAGCGCAG
 GCTGGGAACCCTGCAGATGGTGCAGAGACATCAGCCAACCTGCTTCAACCTTGAGGGGCTGCCAGCGA
 GGCTCCCCGATTGAGAAGTGGTCGTTACTCTGTGCCAGGGCAAAATGACCAAGGCAGTACTCTATAA
 AAGGCTCTGCAAGAGTCTGTGAGGCTCCAGAAGACAGAGACAGAGGGGTGGGAGCAGCGAGACAGAGGG
 CAACCAGGTCTATTTGCCATTTATACTTTCAAGGCACGAAACCCAAATGAACTGAGTGTGTTAGCCAA
 CAGAGACTCAGGATCCATGAGTTTAAAGACGTCACAGGCAATACAGAGTGGTGGTGGCTGAAGTTAACG
 GAAGGAAGGGCTACGTCCATCCAATATATCCGAAAACCGAGTACACC

ACGCGTACGCGGCCGCTCGAG - GFP Tag - GTTTAA

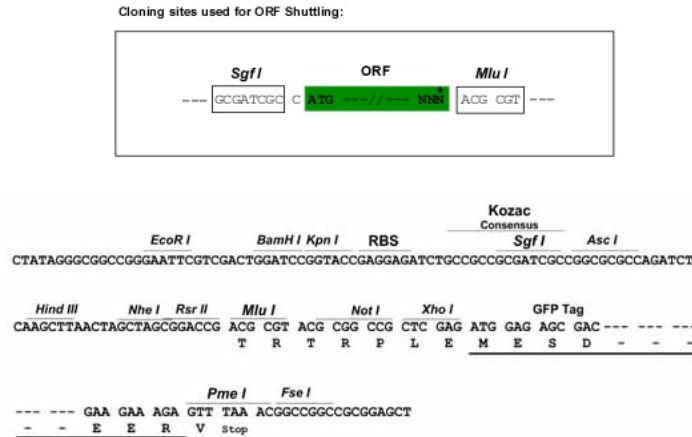
Protein Sequence: >MG223638 representing NM_028029
 Red=Cloning site Green=Tags(s)

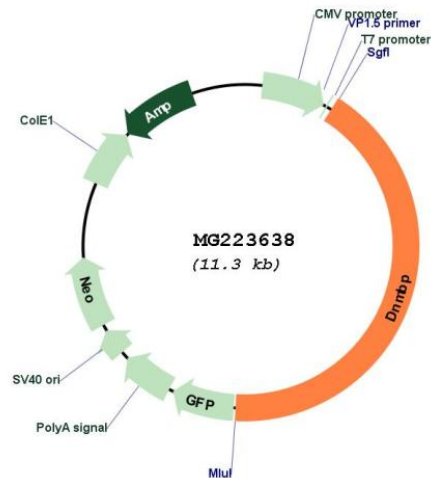
```
MEPGSMVRAIFDFCPSVSEELPLFVGDVIEVLAVVDEFWLLGKKEDVTGQFPSSFVEIVTIPSLKEGERL
FVCICEFVSRELNSLSLHRGDLVILDDSAPTAGWLQGRSCWGAWFFPSSCVQELCLSSRRRWAQSAL
LQAPEYSLGQARALMGLSAQLDEELDFREGDLITIIIGVPEPGWFELEGRGIFPEGFVLLGPLRTVD
ESVNSRSGDDSAVNGEVDVPPEEAE SGGDEDDQSQSGTYGIALYRFQALETNELDFEVGDRIQILGTLEDG
WLEGCLKGKTGVFPHRFVKLCPSNRTEETTAQPQESSFPKDESSVVGKSGDSVVEEARQEPWECEEERP
YDLPGQASVPQDHVAPEWTGDTISGQDKDASGSSPDVDLERPLAKDLSTDPDSEEVNGVSSQPQVPIHPK
VQKSQHYLTAGGSHQTSDFSELVPLEARTRDYSSLPPRRTYAQGWSFQKPASHLQRASSLTASRLDRPS
HFCHPAMASYAQKHQSTENTASLHDPPEPPERPLQDRGPATDITASQGDSDLDSLKTLQQLIEFEK
SLSGPSTPETIVRRFSIMDFYSEKDIVRGSSNSLPSQAFPERKTLRPPPPRPTPTPISSHLLVDQSP
KPVPTLVVRPSRPAPLPPPAQQRMTASPKPTSCAHPGWEAPEKEDSEHMEKSPAQTFPCPSMLARIRDV
EQDLDTCTRAQEELNLLLEEKQDDPSRAETLETLSYESTIQSLTLELQQLRDMTLLSSQSSLAAPFGS
VSTENPEQRMLEKRAKVVAELLQTERDYIRDLEMCIERVMVPLQQAQVNVDFEGLFGNMQTVIKVSKQL
LAALEISDAVGMSSCDCLVPGPVFLDHRDELEGTYRVYCNHDEAISLLEMYEKDEKTKHLDYLDLADLK
GCTNYINLGSFLIKPVQRIMRYPLLLMELLNSTPESHDPKVPNTAVLAVKEINVNINEYKRRKDLVLKY
RKGDEDSLMEKISKLNHISI IKKSSRVSSHLKHLTGFAQLKDEVFETEKNFRMQERLIKSFIRDLSLY
LQHIREASACVKVAAMS IWDLCMERGHHDLEQFEKVHRYISDQLFTRFKERTERLVINPLNQLLNMFTGP
YKLVQKRFDKLLDFYNCTERAELKDKKTEELQSARNNYEALNSQLLDELPKFQQAQSLFTNCIHGYA
EAHCDVQQALEQLQLLSLLKATDREGNLIAIFLEEHSRVLQQLQVTFPFESLPAPRKPFERKTTDRQ
SSRKTLLGMPSYMLQSEELRSSLLARYPPEKLFHVQRNFNAAQDLVSLLEGLDVGVIKKKDPMGSQNRW
LVDNGVTKGFVYSSFLKPYNPRCSHSDASVASHSSTESEHSGSSPGCHRQNSHSALTFNSNMNTVSFTSG
LALTQPQDASPLKCAHETLAVSWNTGHPETGPSTCSSDPGFSCQRRLLGNPADGARDISQPASTLRGCQR
GSPHSEVVGVSPGQNDQGSDSIKGSARVCQAPEDRRDRGVGSSSETEGNQVYFAIYTFKARNPNELSVLAN
QRLRIHEFKDVTGNTEWWLAEVNGRKGYVPSNYIRKTEYT
```

TRTRPLE - GFP Tag - V

Restriction Sites: SgfI-MluI

Cloning Scheme:



Plasmid Map:


ACCN: NM_028029

ORF Size: 4740 bp

OTI Disclaimer: The molecular sequence of this clone aligns with the gene accession number as a point of reference only. However, individual transcript sequences of the same gene can differ through naturally occurring variations (e.g. polymorphisms), each with its own valid existence. This clone is substantially in agreement with the reference, but a complete review of all prevailing variants is recommended prior to use. [More info](#)

OTI Annotation: This clone was engineered to express the complete ORF with an expression tag. Expression varies depending on the nature of the gene.

Components: The ORF clone is ion-exchange column purified and shipped in a 2D barcoded Matrix tube containing 10ug of transfection-ready, dried plasmid DNA (reconstitute with 100 ul of water).

Reconstitution Method:

1. Centrifuge at 5,000xg for 5min.
2. Carefully open the tube and add 100ul of sterile water to dissolve the DNA.
3. Close the tube and incubate for 10 minutes at room temperature.
4. Briefly vortex the tube and then do a quick spin (less than 5000xg) to concentrate the liquid at the bottom.
5. Store the suspended plasmid at -20°C. The DNA is stable for at least one year from date of shipping when stored at -20°C.

RefSeq: [NM_028029.4](#), [NP_082305.1](#)

RefSeq Size: 4887 bp

RefSeq ORF: 4743 bp

Locus ID: 71972

UniProt ID: [Q6TXD4](#)

Cytogenetics: 19 C3

Gene Summary: This gene encodes a member of the DBL family of guanine nucleotide exchange factors. The encoded protein has been proposed to regulate the actin cytoskeleton by specifically activating the Rho-family GTPase Cdc42. An interaction between the encoded protein and a Listeria protein has been shown to mediate Listeria infection. Alternative splicing results in multiple transcript variants. [provided by RefSeq, Apr 2015]