

Product datasheet for **MG223625**

Tcp11 (NM_013687) Mouse Tagged ORF Clone

Product data:

Product Type:	Expression Plasmids
Product Name:	Tcp11 (NM_013687) Mouse Tagged ORF Clone
Tag:	TurboGFP
Symbol:	Tcp11
Synonyms:	D17Ken1; Tcp-11
Mammalian Cell Selection:	Neomycin
Vector:	pCMV6-AC-GFP (PS100010)
E. coli Selection:	Ampicillin (100 ug/mL)



[View online »](#)

ORF Nucleotide Sequence:

>MG223625 representing NM_013687
 Red=Cloning site Blue=ORF Green=Tags(s)

TTTTGTAATACGACTCACTATAGGGCGGCCGGAATTCGTCGACTGGATCCGGTACCGAGGAGATCTGCC
 GCC**CGCATCGCC**

ATGCCAGACGTGAAAGAGAGGGCGCCCGGAAGGAGCCCGCGCGCAGAGAGCGCTCCCGTGAATCCC
 GCGGGGAAACACCCGGAGAGCGCAGCAGCCAGGGGACCGATCGTGTAGTTCAACCGTCGCC
 GAGCACGGCCGCCCTCACCCAGGGTCCCGCAGGGGCGCGGGTAAAGACGGCGCCACGAGTCCCGTG
 GGCCACGGAGGACTGCGGACTGGCCGACCTCCCGGTGTCCCGAGCCCTCCGCCGAGCGAAGCTCCCT
 CGGTACGCGTGGGGACCGCTCCGCCATCCCGGAAAGGGCCACCTCGGGGACCCCGAGCTCGCA
 CAGGCTAGGTATGACGGAGAGTCCATGACGCTTCCAAGCTTGATTGTCAGTTGGAAGAAAGGAGTTTA
 TCTTCAAGCAGCCTGAAAGGCAAGGTCAAGGACACCATGCCAGCGACTTCTGGGAGCATCTGAATGAGC
 AGCTGTCAGCCGTGCCCCCGACTTCAGCTGTGCTCTTGAGCTTCTGAAGGAGATCAAAGAGATCCTGTT
 GTCCTGTGCTGCCACGGCAGAGCCGCTGAAGAATGAGATCGAGGAAGCTCTGGACATGGAGTTCCTC
 CAGCAGCAAGCCGACCGGGAGACTGAATGTCTCTACCTCTCCAAGTATATCCTCAACATGATGGTCT
 TGGTGTGTGCGCAATCCGAGACGAGGCTGTGCAGAGACTTGAGAACATTCAGATCCGGTCCGGTGTCT
 GAGGGGATCTTCCAGGTCTTGGGACAGATGAAAATGGACATGGTGAACACACCATCCAGAGCCTCCAG
 CCCCAGCTTCAGGAACACTCCGTCCAGTTTGAGCGGGCTCAGTTCAGGAGCGCCTCAACAAAGAGCCCA
 GACTCCTCAACACACCAAGTGGCTCACCCAGGCGGCCACACAGCTCATTGCCCCCTCTGCCAGTTC
 CTCTGACTTGACGAGTGTCCAGCTCGGCCGGCCATCTCCAGTGATGTCGCCGTCCCAGAGCCACTC
 AGCCCCGCGATGGTGTCTCAAGGATCTCAACCTTCTCACCTGGGACCCTGAGAATGAAGAGTTTC
 CTGAAACCTAGTGGCAGACAGACCCCGCTCAGGAGCTGGAGTGCAGCAGAGTCAACATCCTCCT
 TGCTCTGTCTTGTGGTGGCCAGTAGCTTCTCTGACAGTGGTCTGTTTAGCTCACCCAGTTTGTAGAC
 AAGCTGAAACAAATCACGAAGTCCCTGGTGGAGGATTTCAACTCCAGGCCGAGGAAGTATGACAGTCAG
 TGAGTGAGCAGGTGGTGGAGGAAGTCCACCAGGTCTCGAGAGCATGGGTTGGCCGCTCTGAGCAGCGA
 GAATACGGCGTCCCTGGTGGCCAGCTCCAGAACATTGCCAAGAAGGAAAAGTGCCTCCGACGCGTATT
 GACCAGCGTATACACTTGTCTCAAGTGTCTTTGCTGGTGTGCAGCGATCCCTCTGGACCTTC
 CCGGGGCTCACTCTGATCGAAGCTGAGCTGGCGGAAGTGGCCAGAAGTTTGCAGCCTGACCCATCA
 CAACCAGCAGGTGTTGCCCGTATTACACCGAGATCTTAAAAACCTCATCTCCCAGCCAGACCCCTG
 GCCACAAAGGTGGGTCTCTC

AC**GGGCCGCT**CGAG - GFP Tag - GTTTAA

Protein Sequence:

>MG223625 representing NM_013687
 Red=Cloning site Green=Tags(s)

MPDVKERAARKEPGAESASRESRGGNTRESASSAQGHRSCRFNRRPSTAALTPGSAQGRGVKTAPRGPV
 GHGGLRTGPTSRCPQPSARAKLPSVTRGAPLPPSPGKHLGGTPSSHRLGMTERVHDASKLDCQLEERSL
 SSSSLKGVKDTMPDFWEHLNEQLSAVPPDFSCALELLKEIKEILLLLLLPRQSRLKNEIEEALDMEFL
 QQQADRGLNVSYSKYILNMMVLLCAPIRDEAVQRLNISDPVRLLRGIFQVLGQMKMDMNYTIQSLQ
 PQLQEHSVQFERAQFQERLNKEPRLLNHTTKWL TQAATQLIAPSASSDLQDCSSSAGPSPSDVAVPEPL
 SPAMVLSQGFLLNLLTWPENEEFPETLVADRPRLQELESQSQLTILASVLLVASSFSDSGLFSSPQFVD
 KLKQITKSLVEDFNRPVEVMQSVSEQVVEEVHQGLESMGLAALSSENTASLVGQLQNIKKENCVRSVI
 DQRIHLFLKCCFVLGVQRSLLDLPGLTLIEAELAEQGKQFVSLTHHNQVFAPYYTEILKTLISPAQTL
 ATKGGSL

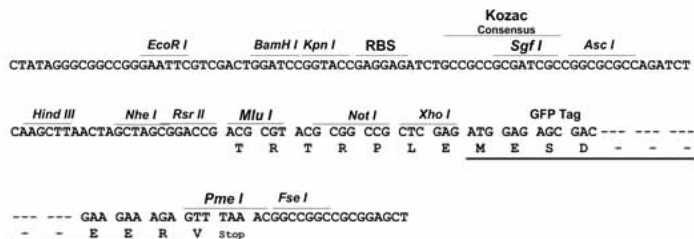
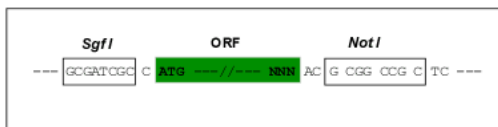
TRPLE - GFP Tag - V

Restriction Sites:

Sgfl-NotI

Cloning Scheme:

Cloning sites used for ORF Shutting:



ACCN: NM_013687

ORF Size: 1701 bp

OTI Disclaimer: The molecular sequence of this clone aligns with the gene accession number as a point of reference only. However, individual transcript sequences of the same gene can differ through naturally occurring variations (e.g. polymorphisms), each with its own valid existence. This clone is substantially in agreement with the reference, but a complete review of all prevailing variants is recommended prior to use. [More info](#)

OTI Annotation: This clone was engineered to express the complete ORF with an expression tag. Expression varies depending on the nature of the gene.

Components: The ORF clone is ion-exchange column purified and shipped in a 2D barcoded Matrix tube containing 10ug of transfection-ready, dried plasmid DNA (reconstitute with 100 ul of water).

Reconstitution Method:

1. Centrifuge at 5,000xg for 5min.
2. Carefully open the tube and add 100ul of sterile water to dissolve the DNA.
3. Close the tube and incubate for 10 minutes at room temperature.
4. Briefly vortex the tube and then do a quick spin (less than 5000xg) to concentrate the liquid at the bottom.
5. Store the suspended plasmid at -20°C. The DNA is stable for at least one year from date of shipping when stored at -20°C.

RefSeq: [NM_013687.3](#), [NP_038715.2](#)

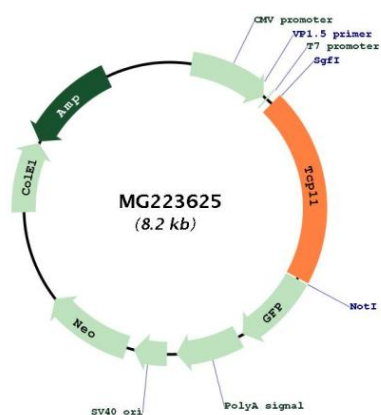
RefSeq Size: 2001 bp

RefSeq ORF: 1704 bp

Locus ID: 21463

Cytogenetics: 17 14.62 cM

Product images:



Circular map for MG223625