

## Product datasheet for **MG223604**

### **Nnat (NM\_180960) Mouse Tagged ORF Clone**

#### **Product data:**

**Product Type:** Expression Plasmids  
**Product Name:** Nnat (NM\_180960) Mouse Tagged ORF Clone  
**Tag:** TurboGFP  
**Symbol:** Nnat  
**Synonyms:** 5730414I02Rik; AW107673; Peg5  
**Mammalian Cell Selection:** Neomycin  
**Vector:** pCMV6-AC-GFP (PS100010)  
**E. coli Selection:** Ampicillin (100 ug/mL)  
**ORF Nucleotide Sequence:** >MG223604 representing NM\_180960  
Red=Cloning site Blue=ORF Green=Tags(s)

TTTTGTAATACGACTCACTATAGGGCGGCCGGAATTCGTCGACTGGATCCGGTACCGAGGAGATCTGCC  
GCC**CGATCGCC**

**ATGGCCGAGTGGCAGCAGCCTCGGCAGAACTGCTCATCATCGGCTGGTACATCTCCGCGTGCTGCTGC**  
**AGGTGTTCAAGTACTCCCTGCAGAAGCTGGCGCACACGGTGTCCCGACCGGGCGGCAGGTCTGGGGGA**  
**GCGCAGGCAGCGAGCCCCAAC**

**ACGCGTACGCGGCCGCTCGAG** - GFP Tag - GTTTAA

**Protein Sequence:** >MG223604 representing NM\_180960  
Red=Cloning site Green=Tags(s)

MAAVAAASAELLIIGWYIFRVLLQVFRYSLQKLAHTVSRTRGQVLGERRQRAPN

**TRTRPLE** - GFP Tag - V

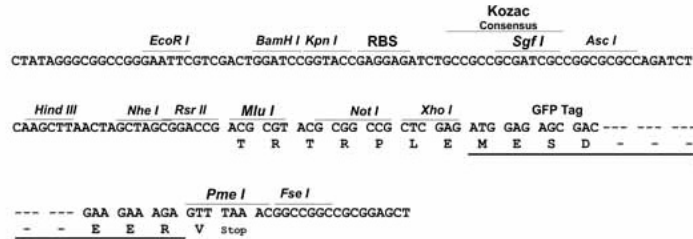
**Restriction Sites:** Sgfl-MluI



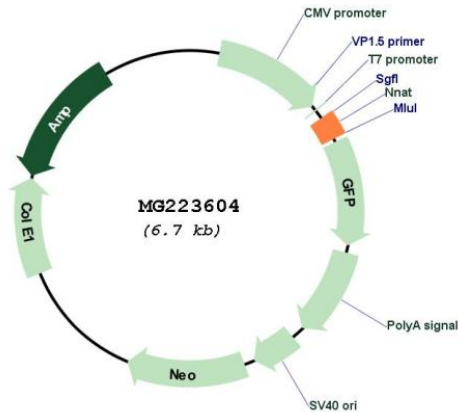
[View online »](#)

## Cloning Scheme:

Cloning sites used for ORF Shutting:



## Plasmid Map:



ACCN: NM\_180960

ORF Size: 162 bp

<b>OTI Disclaimer:</b>	The molecular sequence of this clone aligns with the gene accession number as a point of reference only. However, individual transcript sequences of the same gene can differ through naturally occurring variations (e.g. polymorphisms), each with its own valid existence. This clone is substantially in agreement with the reference, but a complete review of all prevailing variants is recommended prior to use. <a href="#">More info</a>
<b>OTI Annotation:</b>	This clone was engineered to express the complete ORF with an expression tag. Expression varies depending on the nature of the gene.
<b>Components:</b>	The ORF clone is ion-exchange column purified and shipped in a 2D barcoded Matrix tube containing 10ug of transfection-ready, dried plasmid DNA (reconstitute with 100 ul of water).
<b>Reconstitution Method:</b>	<ol style="list-style-type: none"><li>1. Centrifuge at 5,000xg for 5min.</li><li>2. Carefully open the tube and add 100ul of sterile water to dissolve the DNA.</li><li>3. Close the tube and incubate for 10 minutes at room temperature.</li><li>4. Briefly vortex the tube and then do a quick spin (less than 5000xg) to concentrate the liquid at the bottom.</li><li>5. Store the suspended plasmid at -20°C. The DNA is stable for at least one year from date of shipping when stored at -20°C.</li></ol>
<b>RefSeq:</b>	<a href="#">NM_180960.3</a>
<b>RefSeq Size:</b>	1142 bp
<b>RefSeq ORF:</b>	165 bp
<b>Locus ID:</b>	18111
<b>UniProt ID:</b>	<a href="#">Q61979</a>
<b>Cytogenetics:</b>	2 H1
<b>Gene Summary:</b>	May participate in the maintenance of segment identity in the hindbrain and pituitary development, and maturation or maintenance of the overall structure of the nervous system. [UniProtKB/Swiss-Prot Function]