

Product datasheet for **MG223590**

Dgcr6 (NM_010047) Mouse Tagged ORF Clone

Product data:

Product Type: Expression Plasmids
Product Name: Dgcr6 (NM_010047) Mouse Tagged ORF Clone
Tag: TurboGFP
Symbol: Dgcr6
Mammalian Cell Selection: Neomycin
Vector: pCMV6-AC-GFP (PS100010)
E. coli Selection: Ampicillin (100 ug/mL)
ORF Nucleotide Sequence: >MG223590 representing NM_010047
 Red=Cloning site Blue=ORF Green=Tags(s)

TTTTGTAATACGACTCACTATAGGGCGGCCGGAATTCGTCGACTGGATCCGGTACCGAGGAGATCTGCC
 GCC**CGATCGCC**

ATGGTAGAGAGCATGGCACCAGCCAGCTCCTTTAGCAGCGCCTGTCTACACCAGCTCAGCGACTTGG
 CCCTGGCGCTGCTCGACGGAACGGTGTTTGAATCGTGCAGGGTCTTCTGGAGATTCAGCACCTCACTGA
 GAAGAGCCTCTACAACCAGAGACTGCGGCTGCAGAACGAACCCAGTGCCTCAGACAGACTCTAAGGCAG
 AAGCACCTGGAAGCCAGCAGTCTGCCGGCCCCACAATTGCCAGTGTCCAGGCAGCTCAGCAGCGTG
 AGCTGGAGGCCATGGAACATCGGATCCGGGAGGAGCAGCAGGCTATGGACCGAAAGATTGCTGGAGCT
 GGACCGAAGGTTGCCGACCAGCAGACACTGGAGAAGGCAGGGGTAGCTGGTTTCTACGTGACCACC
 AATCCTCAGGAGCTGACGCTGCAGATGAACCTATTGGAATCATCAGGAAGCTGCAGCAGAGGGGCTGCC
 AAGTGGGAAAGGCAGCTCTG

ACGCGTACGCGGCCGCTCGAG - GFP Tag - GTTTAA

Protein Sequence: >MG223590 representing NM_010047
 Red=Cloning site Green=Tags(s)

MVESMAPASSFQQRLSYTTLSDLALALLDGTVFEIVQGLLEIQHLTEKSLYNQRLRLQNEHRVLRQTLRQ
 KHLEAQQSCRPHNLPVLQAAQQRELEAMEHRIREEQQAMDRKIVLELDRKVADQQSTLEKAGVAGFYVTT
 NPQELTLQMNLLLELIRKLQQRGCQVGAAL

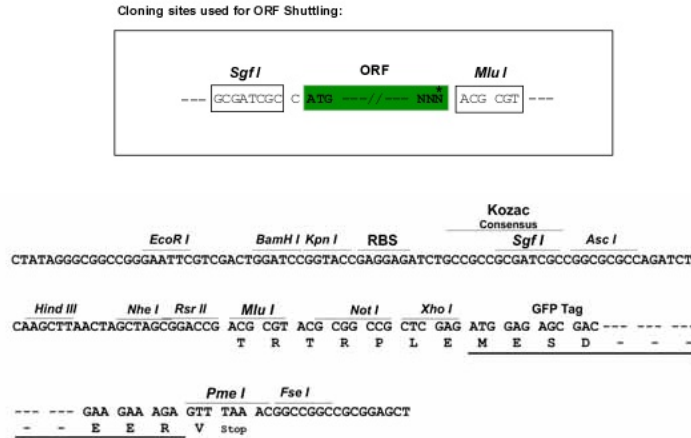
TRTRPLE - GFP Tag - V

Restriction Sites: SgfI-MluI

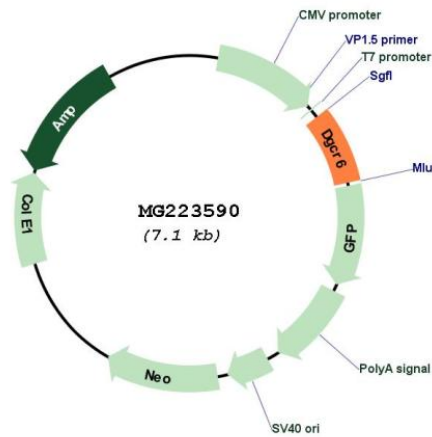


[View online »](#)

Cloning Scheme:



Plasmid Map:



ACCN: NM_010047

ORF Size: 510 bp

OTI Disclaimer: The molecular sequence of this clone aligns with the gene accession number as a point of reference only. However, individual transcript sequences of the same gene can differ through naturally occurring variations (e.g. polymorphisms), each with its own valid existence. This clone is substantially in agreement with the reference, but a complete review of all prevailing variants is recommended prior to use. [More info](#)

OTI Annotation: This clone was engineered to express the complete ORF with an expression tag. Expression varies depending on the nature of the gene.

Components:	The ORF clone is ion-exchange column purified and shipped in a 2D barcoded Matrix tube containing 10ug of transfection-ready, dried plasmid DNA (reconstitute with 100 ul of water).
Reconstitution Method:	<ol style="list-style-type: none">1. Centrifuge at 5,000xg for 5min.2. Carefully open the tube and add 100ul of sterile water to dissolve the DNA.3. Close the tube and incubate for 10 minutes at room temperature.4. Briefly vortex the tube and then do a quick spin (less than 5000xg) to concentrate the liquid at the bottom.5. Store the suspended plasmid at -20°C. The DNA is stable for at least one year from date of shipping when stored at -20°C.
RefSeq:	<u>NM_010047.4, NP_034177.1</u>
RefSeq Size:	1262 bp
RefSeq ORF:	513 bp
Locus ID:	13353
UniProt ID:	<u>O35347</u>
Cytogenetics:	16 11.19 cM
Gene Summary:	This gene encodes a protein that is similar to the gonadal protein in Drosophila (fruit fly). The encoded protein is thought to play a role in migration of neural crest cells during development. Deletions in the human gene are associated with DiGeorge syndrome (or velocardiofacial syndrome) which has many clinical features including cardiac abnormalities, cleft palate, atypical facial features, hypocalcemia, hypoparathyroidism and defective development or congenital absence of the thymus. Alternative splicing results in multiple transcript variants. [provided by RefSeq, Jan 2014]