

Product datasheet for **MG223588**

Asph (NM_001177850) Mouse Tagged ORF Clone

Product data:

Product Type:	Expression Plasmids
Product Name:	Asph (NM_001177850) Mouse Tagged ORF Clone
Tag:	TurboGFP
Symbol:	Asph
Synonyms:	2310005F16Rik; 3110001L23Rik; AI848629; AW261690; AW561901; BAH; C79816; cl-37
Mammalian Cell Selection:	Neomycin
Vector:	pCMV6-AC-GFP (PS100010)
E. coli Selection:	Ampicillin (100 ug/mL)
ORF Nucleotide Sequence:	>MG223588 representing NM_001177850 Red=Cloning site Blue=ORF Green=Tags(s)

TTTTGTAATACGACTCACTATAGGGCGGCCGGAATTCGTCGACTGGATCCGGTACCGAGGAGATCTGCC
GCC**CGATCGCC**

ATGGCCCCGCGCAAGAACGCCAAGGGCGGCGGCAACAGCAGCAGCAGCGGCAGCGGCAGCGGCTCGG
GCAGCGGTAGCCCGAGCACGGGTAGCAGCGGTAGCAGCAGTAGCCCCGGGGCTCGGAGAGAGGCAAAGCA
CGGAGGACACAAGAATGGGAGAAGAGGAGGGATTCAGGAGGGTCCTTTTTCACATGGTTCATGGTCATT
GCATTGCTCGGCTCTGGACATCTGTGGCTGTCGTGTGGTTTGACTTGGTCGATTATGAAGAAGTCTAG
GAAAAGTACTAGGAGTCTATGATGCGGATGGCGATGGAGACTTTGATGTGGATGATGCCAAAGTTTTATTAGG
CCTTAAAGAAAGATCTCCTTCTGAGAGGACATTTCCACCGAGGAGGAGGAGGAGACTCACGCTGAGCTG
GAGGAGCAGGCCCTGAGGGGCGAGACATCCAGAATGTTGAAGATGAAGTAAAGGAACAAATTCAGTCCC
TTCTTCAGGAATCAGTACACACAGACCATGACCTTGAAGCAGATGGGCTGGCAGGAGAACCACAGCCGGA
GGTTGAGGACTTCTCACAGTGACCGACAGTGATGACAGATTTGAGGACCTGGAACCCGGGACAGTTCAT
GAAGAAATCGAGGATACTTACCATGTGGAAGACACAGCATCGCAGAACCATCAAATGACATGGAAGAGA
TGACGAATGAGCAGGAAAATTCAGATCCAGTGAAGCAGTGACAGATGCAGGTGTGCTGCTGCCCATGC
AGAGGAAGTAAGACACCAAGACTATGATGAACCAAGTATATGAACCCTCAGAGCATGAAGGGTTCGCGATT
TCAGATAACACCATAGATGATTCAGCATAATCTCAGAAGAAATAATGTGCGCTCTGTTGAAGAACAGC
AAGACACACCACAGATACT

ACGCGTACGCGGCCGCTCGAG - GFP Tag - GTTTAA



[View online »](#)

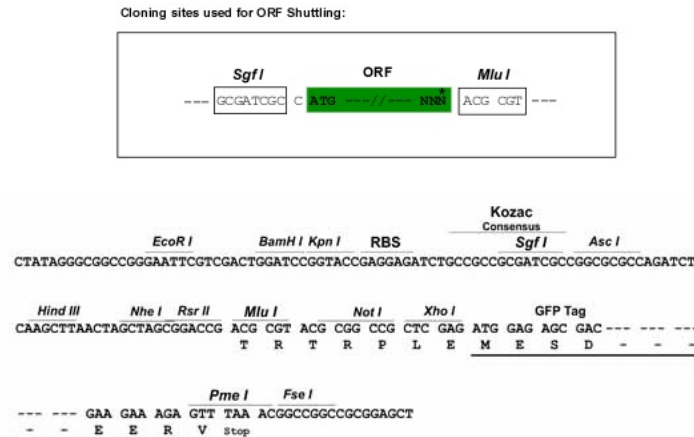
Protein Sequence: >MG223588 representing NM_001177850
 Red=Cloning site Green=Tags(s)

MAPRKNAKGGGGNSSSSGSGSGSGSPSTGSSGSSSSPGARREAKHGHHKNGRRGGISGGSFFTWFMVI
 ALLGVWTSVAVVWFDLVDYEEVLGKLGVDADGDGDFDVEDDAKVLGLKERSPSERTFPPEEEAETHAEL
 EEQAPEGADIQNVEDEVKEQIQSLLQESVHTDHDLEADGLAGEPQPEVEDFLTVTDSDDRFEDLEPGTVH
 EEIEDTYHVEDTASQNHNPNDMEEMTNEQENS DPSEAVTDAGVLLPHAAEVRHQDYDEPVYEPSEHEGVAI
 SDNTIDSSIISEEINVASVEEQDTPPDT

TRTRPLE - GFP Tag - V

Restriction Sites: SgfI-MluI

Cloning Scheme:



ACCN: NM_001177850

ORF Size: 930 bp

OTI Disclaimer: The molecular sequence of this clone aligns with the gene accession number as a point of reference only. However, individual transcript sequences of the same gene can differ through naturally occurring variations (e.g. polymorphisms), each with its own valid existence. This clone is substantially in agreement with the reference, but a complete review of all prevailing variants is recommended prior to use. [More info](#)

OTI Annotation: This clone was engineered to express the complete ORF with an expression tag. Expression varies depending on the nature of the gene.

Components: The ORF clone is ion-exchange column purified and shipped in a 2D barcoded Matrix tube containing 10ug of transfection-ready, dried plasmid DNA (reconstitute with 100 ul of water).

Reconstitution Method:

1. Centrifuge at 5,000xg for 5min.
2. Carefully open the tube and add 100ul of sterile water to dissolve the DNA.
3. Close the tube and incubate for 10 minutes at room temperature.
4. Briefly vortex the tube and then do a quick spin (less than 5000xg) to concentrate the liquid at the bottom.
5. Store the suspended plasmid at -20°C. The DNA is stable for at least one year from date of shipping when stored at -20°C.

RefSeq: [NM_001177850.1](#), [NP_001171321.1](#)

RefSeq Size: 2925 bp

RefSeq ORF: 933 bp

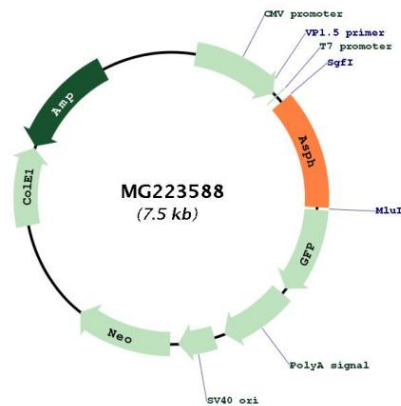
Locus ID: 65973

UniProt ID: [Q8BSY0](#)

Cytogenetics: 4 A1

Gene Summary: Isoform 1: specifically hydroxylates an Asp or Asn residue in certain epidermal growth factor-like (EGF) domains of a number of proteins.[UniProtKB/Swiss-Prot Function]

Product images:



Circular map for MG223588