

Product datasheet for **MG223585**

Asph (NM_023066) Mouse Tagged ORF Clone

Product data:

Product Type:	Expression Plasmids
Product Name:	Asph (NM_023066) Mouse Tagged ORF Clone
Tag:	TurboGFP
Symbol:	Asph
Synonyms:	2310005F16Rik; 3110001L23Rik; AI848629; AW261690; AW561901; BAH; C79816; cl-37
Mammalian Cell Selection:	Neomycin
Vector:	pCMV6-AC-GFP (PS100010)
E. coli Selection:	Ampicillin (100 ug/mL)



[View online »](#)

ORF Nucleotide Sequence:

>MG223585 representing NM_023066
 Red=Cloning site Blue=ORF Green=Tags(s)

TTTTGTAATACGACTCACTATAGGGCGGCCGGGAATTCGTCGACTGGATCCGGTACCGAGGAGATCTGCC
 GCC**CGATCGCC**

ATGGCCCCGCGCAAGAACGCCAAGGGCGCGCGGCAACAGCAGCAGCAGCGGCAGCGGCAGCGGCTCGG
 GCAGCGGTAGCCCGAGCACGGGTAGCAGCGGTAGCAGCAGTAGCCCCGGGGCTCGGAGAGAGGCAAAGCA
 CCGAGGACACAAGAATGGGAGAAGAGGAGGATTTTCAGGAGGGTCTTTTTTCACATGGTTCATGGTCATT
 GCATTGCTCGGCGTCTGGACATCTGTGGCTGTCGTGTGGTTTGACTTGGTCGATTATGAAGAAGTCTAG
 GAAAAGTGGAGTCTATGATGCGGATGGCGATGGAGACTTTGATGTGGATGATGCCAAAGTTTTATTAGG
 CCTTAAAGAAAGATCTCCTTCTGAGAGGACATTTCCACCGGAGGAGGAGGCAGAGACTCACGCTGAGCTG
 GAGGAGCAGGCCCTGAGGGGGCAGACATCCAGAATGTTGAAGATGAAGTAAAGGAACAAATTCAGTCCC
 TTCTTCAGGAATCAGTACACACAGACCATGACCTTGAAGCAGATGGGCTGGCAGGAGAACCACAGCCGGA
 GGTGAGGACTTCTCACAGTGACCGACAGTGTGACAGATTTGAGGACCTGGAACCCGGGACAGTTCAT
 GAAGAAATCGAGGATACTTACCATGTGGAAGACACAGCATCGCAGAACCATCCAAATGACATGGAAGAGA
 TGACGAATGAGCAGGAAAATTCAGATCCCAGTGAAGCAGTGACAGATGCAGGTGTGCTGCTGCCCATGC
 AGAGGAAGTAAGACACCAAGACTATGATGAACCAAGTATGTAACCCCTCAGAGCATGAAGGGGTCGCGATT
 TCAGATAACACCATAGATGATCCAGCATAATCTCAGAAGAAATAATGTGCGCTCTGTTGAAGAACAGC
 AAGACACACCACAGTTAAGAAGAAGAAGCCTAAACTTCTGAACAAATTTGATAAGACAATTAAGGCTGA
 GCTGGATGCTGCAGAAAAGCTCCGAAAAGGGTAAAAATTGAGGAAGCAGTGAACGCATTTGAAGAACTG
 GTTCGAAAAGTACCCTCAGAGCCCACGAGCAAGATATGGCAAAGCGCAGTGTGAAGATGACTTGGCAGAGA
 AGCAGAGAAGCAATGAGGTTCTGCGCAGGGCCATCGAGACCTACCAGGAGGCAGCCGACTGCCTGATGC
 CCTACAGACCTGGTGAAGCTGAGCTTGAAGCGAAGGTCGGAACGGCAGCAGTTTCTAGGTACATGAGA
 GGTTCCTACTTACCCTCCAGAGACTAGTCAACTGTTCCCTAGTGATACTACCTTAAAAACGACCTTG
 GCGTAGGATACCTCTTGTGGGAGACAACGACAGTGCCAAGAAGGTTTACGAAGAGGTGCTAAATGTGAC
 ACCAAATGATGGCTTCGCTAAAGTGCATTACGGCTTCATCCTGAAGGCACAGAACAAGATATCTGAGAGC
 ATTCCTACTTAAAGGAAGGAATCGAATCTGGGGACCCTGGCACGGATGATGGCCGGTTTTACTTCCACT
 TGGGGGATGCCATGCAGAGGGTCGGGAACAAGAGGCATATAAGTGGTATGAACTTGGGCACAAGAGAGG
 ACATTTTGCTCTGTCTGGCAGCGTTCCCTCTACAATGTGAATGGTCTGAAGGCTCAGCCGTGGTGGACA
 CCCAGGGAGACTGGCTACACAGAGCTAGTGAAGTCTTTAGAGAGAACTGGAAGTTAATCCGTGATGAAG
 GCCTCATGGTGTGGATAAAGCCAAGGGTCTTCTCCTGCCTGAGGACGAAAACCTTCGGGAGAAGGGCGA
 CTGGAGCCAGTTCACACTGTGGCAGCAAGGAAGGAAGAATGAGAATGCCTGTAAGGAGCGCCTAAGACC
 TGTGCTTTACTAGAAAAGTTTTCCGAAACAACAGGATGCAGAAGAGGACAGATCAATACTCCATCATGC
 ACCCTGGAACATGTGTGGCCGCATACAGGACCACAACTGCAGGCTCCGAATGCATCTGGGGTTAGT
 GATCCCCAAGGAAGGCTGCAAGATCCGGTGTGCCAATGAGACCAGGACGTGGGAAGAAGGCAAGGTGCTC
 ATCTTTGATGACTCTTTTGGACAGAGGTTTGGCAGGATGCCTCGTCTTCCGGCTGATATTCATCGTGG
 ATGTGTGGCACCCGAGCTGACCCCTCAGCAGAGACGCAGCCTTCCCGCAATT

ACGCGTACGCGGCCGCTCGAG – GFP Tag – GTTTAA

Protein Sequence: >MG223585 representing NM_023066
 Red=Cloning site Green=Tags(s)

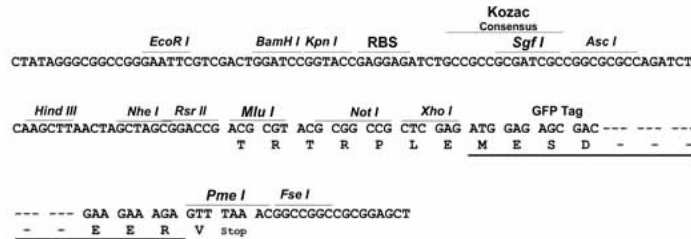
MAPRKNAKGGGGNSSSSGSGSGSGSPSTGSSGSSSSPGARREAKHGHHKNGRRGGISGGSFFTWFMVI
 ALLGVWTSVAVVWFDLVDYEEVLGKLGVDADGDGDFDVDDAKVLLGLKERSPERTFPPEEEAETHAEL
 EEQAPEGADIQNVEDEVKEQIQSLLQESVHTDHDLEADGLAGEPQPEVEDFLTVTDSDDRFEDLEPGTVH
 EEIEDTYHVEDTASQNHPNMMEEMTNEQENS DPSEAVTDAGVLLPHAAEEVRHQDYDEPVYEPSEHEGVAI
 SDNTIDSSIIISSEINVASVEEQDTPPVKKKPKLLNKFDKTIKAELDAAEKLRRGKIEEAVNAFEEL
 VRKYPQSPRARYGKAQCEDDLAEKQRSNEVLRRAIETYQEAADLPAAPTDLVKLSLKRRSERQQFLGHMR
 GSLLTLQRLVQLFPSDTTLKNDLGVGYLLLDGND SAKKYEEVLNVT PNDGFAKVHYGFI LKAQNKISES
 IPYLKEGIESGDPGTDGRFYFHLGDAMQRVGNKEAYKWYELGHKRGHFAVWQRSLYVNLGKAQPWWT
 PRETGYTELVKSLERNWKLIRDEGLMVMKAKGLFLPEDENLREKGDWSQFTLWQQGRKNENACKGAPKT
 CALLEKFSETTGCRGQIKYSIMHPGTHVWPHGTPTNCRMLMHLGLVIPKEGCKIRCANE TRTWEEGKVL
 IFDDSFHEVWQDASSFRLIFIVDVVHPELTPQRRSLPAI

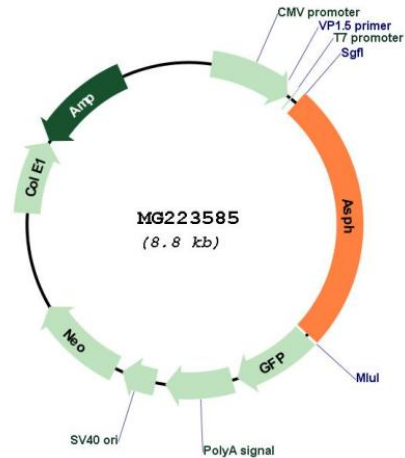
TRTRPLE - GFP Tag - V

Restriction Sites: SgfI-MluI

Cloning Scheme:

Cloning sites used for ORF Shutting:



Plasmid Map:


ACCN: NM_023066

ORF Size: 2223 bp

OTI Disclaimer: The molecular sequence of this clone aligns with the gene accession number as a point of reference only. However, individual transcript sequences of the same gene can differ through naturally occurring variations (e.g. polymorphisms), each with its own valid existence. This clone is substantially in agreement with the reference, but a complete review of all prevailing variants is recommended prior to use. [More info](#)

OTI Annotation: This clone was engineered to express the complete ORF with an expression tag. Expression varies depending on the nature of the gene.

Components: The ORF clone is ion-exchange column purified and shipped in a 2D barcoded Matrix tube containing 10ug of transfection-ready, dried plasmid DNA (reconstitute with 100 ul of water).

Reconstitution Method:

1. Centrifuge at 5,000xg for 5min.
2. Carefully open the tube and add 100ul of sterile water to dissolve the DNA.
3. Close the tube and incubate for 10 minutes at room temperature.
4. Briefly vortex the tube and then do a quick spin (less than 5000xg) to concentrate the liquid at the bottom.
5. Store the suspended plasmid at -20°C. The DNA is stable for at least one year from date of shipping when stored at -20°C.

RefSeq: [NM_023066.3](#), [NP_075553.2](#)

RefSeq Size: 6688 bp

RefSeq ORF: 2226 bp

Locus ID: 65973

UniProt ID: [Q8BSY0](#)

Cytogenetics: 4 A1

Gene Summary: Isoform 1: specifically hydroxylates an Asp or Asn residue in certain epidermal growth factor-like (EGF) domains of a number of proteins.[UniProtKB/Swiss-Prot Function]