

Product datasheet for **MG223574**

Sim2 (NM_011377) Mouse Tagged ORF Clone

Product data:

Product Type:	Expression Plasmids
Product Name:	Sim2 (NM_011377) Mouse Tagged ORF Clone
Tag:	TurboGFP
Symbol:	Sim2
Synonyms:	bHLHe15
Mammalian Cell Selection:	Neomycin
Vector:	pCMV6-AC-GFP (PS100010)
E. coli Selection:	Ampicillin (100 ug/mL)



[View online »](#)

ORF Nucleotide Sequence:

>MG223574 representing NM_011377
 Red=Cloning site Blue=ORF Green=Tags(s)

TTTTGTAATACGACTCACTATAGGGCGGCCGGAATTCGTCGACTGGATCCGGTACCGAGGAGATCTGCC
 GCC**CGGATCGCC**

ATGAAGGAGAAGTCCAAAAATGCGGCCAAAACCAGGAGGGAGAAGGAAAATGGCGAGTTTTACGAGCTGG
 CCAAGCTGCTCCCGCTGCCTTCGGCCATCACCTCGCAGCTGGACAAAGCGTCCATCATCCGACTCACCAC
 CAGCTACCTGAAGATGCGCGCGGTCTTCCCGGAAGGTCTAGGAGACGCGTGGGGACAGCCGAGCAGGACA
 GGGCCTCTGGACAGCGTGGCAAAGAGCTGGGATCCCATTGCTGCAGACTCTAGATGGATTTGTGTTCG
 TGGTGGCCTCTGATGGCAAATCATGTATATCTGAGACCGCTTCTGTCCATTTAGGCTTGTCCCAGGT
 GGAGCTCACAGGCAACAGTATTTATGAATACATACATCCTTCTGACCACGACGAGATGACAGCCGTA
 CTACTACAGCCACCCACCGCTCCACCATCACCTGCTCCAAGAGTACGAGATAGAGCGGTCTTTCTTTCTCGAA
 TGAAGTGGCTCTTGGCAAACGAAACGCAGGCCGACATGCAGTGGATAACAAGGTCATTCAGTGCAGCGG
 CTACCTAAAGATCAGACAGTACATGCTGGACATGTCCCTGTACGACTCCTGTTACAGATCGTGGGGCTG
 GTGGCCGTGGGCCAGTCCGCTACCGCCACGCGCCATCACGGAGATCAAGCTCCACAGCAACATGTTATGT
 TCAGGGCCAGCCTTGACCTGAAGCTCATATTCCTGGACTCCAGGGTGACAGAGCTTACGGGCTATGAGCC
 ACAAGACCTGATCGAAAAGACACTGTACCATCATGTGCATGGCTGTGACACCTTCCACCTCCGATATGCA
 CACCACCTCTTGTGGTGAAGGGCCAGGTACCCACCAAACTACTACCGGCTGCTGTCCAAGCTGGGCGGCT
 GGGTCTGGGTGCAGAGCTACGCCACCGTGGTGCACAACAGCCGCTCCTCCCGGCTCACTGCATCGTGAG
 TGTCAATTATGTTCTCACGGATGTTGAATAACAAGAACTTCAAGTGTCTCTGGACCAGGTATCCACCTCT
 AAGTCCCAGGAGTCCCTGGAGAACCACCTTGTCTACCTCACAAGAACTAGGAAATCAGCTAAACCCAAAA
 ACACAAAGATGAAGACAAAGCTGAGAACAACCCATATCCCCACAGCAATACAGCTCCTTCCAAATGGA
 CAAACTGGAGTGCAGCCAGGTGGGAAACTGGAGAAGTACGCTCCCGCCACAATGCTGTGGCTCCCGCGAA
 CAGCAGCTCCATTAGAAGCCAGCGACCTTTTATATGGGCGGCCCTACAGCCTCCCTTCTCCTACCATT
 ATGGACACTTCCCATTTGGACTCTCACGTCTTACGAGCAAGAAGCCAGGATTGCCCGCAAGTTCGGGCA
 GCCCAAGGATCCCGTGTGAGGTGGCAGCCTTCTTCTGAGCAGTCCAGCCAGCAGCGAATGCCAG
 TGGCACTGTGCCAACTCTAGTGCCAGCAGCTCATCGCCAGCTAAAAACCTTTCTGAGCCTTCTCCTG
 TGAATGCTGCCCGCATGGTCTTGTGCCAACTATGAAGCGCCCTCCGAGCCGCGCGCAGGTTCTGCGA
 GGACCCCGCGCCCAAGCTTCCCGAGCTGCGGCCACTACCGGAGGAGCCGGCGCTGGGCCCTGCCAAG
 GCGCCTCGCCAGGCGTCCCGGACGACGCCGGCTGGCGCTGGCCGAGCGCCCGGAGTCTGCGCGC
 CGCCCGCCCCGAGCCGAGCGCGCGGCGCAGTTGCCCTTCGTGCTGCTCAACTACCACCGCGTGTGGC
 GCGCCGCGGGCCTCTGGGAGCGCTGCGCCCGGAGCCCCGAGGCGGCGGCTCGCTGAGGCCCGACAC
 CCAGGCCCGTCGCCGCTCTGCGCCCGGCGCGCCCCGACCGCATTACCTGGGCGCCTCGGTATCATCA
 CCAACGGCAGG

AG**CGGACCG**ACGCGTACGCGGCCGCTCGAG - GFP Tag - GTTTAA

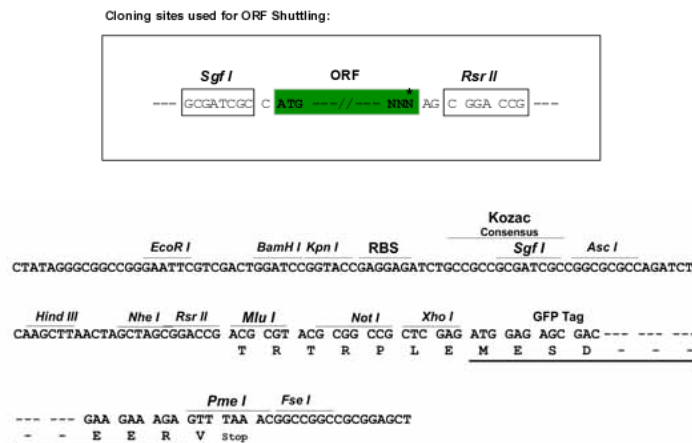
Protein Sequence: >MG223574 representing NM_011377
 Red=Cloning site Green=Tags(s)

MKEKSKNAAKTRREKENGFEYELAKLLPLPSAITSQLDKASIIRLTTSYLMRAVFPEGLGDAWGQPSRT
 GPLDSVAKELGSHLLQTLDFGVFVVASDGMKIMYISETASVHLGLSQVELTGNISIEYIHPSDHDEMTAVL
 TAHPLHHHLLQEYEIERSFFLRMKCVLAKRNLGTCVSGYKVIHCSGYLKRQYMLDMSLYDSCYQIVGL
 VAVGQSLPPSAITEIKLHSNMFMFRASLDLKLIFLDSRVTELTGYEPQDLIEKTLYHHVHGCDTFHLRYA
 HHLLLVKGQVTKYYRLLSKLGGWVWVQSYATVVHNSRSSRPHCI VSVNYVLT DVEYKELQLSLDQVSTS
 KSQESWRITLSTSQETRKSAPKNTKMKTKLRTNPPYPPQYSSFMQDKLECSQVGNWRTSPPTNAVAPPE
 QQLHSEASDLLYPPYSLPF SYHYGHFPLD SHV FSSKKPGLPAKFGQPQGSPEVARFFLSTLPASSECQ
 WHCANSLVPSSSSPAKNLSESPVNAARHGLVPNYEAPSAARRFCEDPAPPSFPSCGHYREEPALGPAK
 APRQASRDAARLALARAPPECCAPPEPQAPAQLPFVLLNYHRVLAARRGPLGSAAPGAPEAAGSLRPRH
 PGPVAASAPGAPRPHYL GASVIIITNGR

SGP TRRRLE - GFP Tag - V

Restriction Sites: SgfI-RsrII

Cloning Scheme:



ACCN: NM_011377

ORF Size: 1971 bp

OTI Disclaimer: The molecular sequence of this clone aligns with the gene accession number as a point of reference only. However, individual transcript sequences of the same gene can differ through naturally occurring variations (e.g. polymorphisms), each with its own valid existence. This clone is substantially in agreement with the reference, but a complete review of all prevailing variants is recommended prior to use. [More info](#)

OTI Annotation: This clone was engineered to express the complete ORF with an expression tag. Expression varies depending on the nature of the gene.

Components: The ORF clone is ion-exchange column purified and shipped in a 2D barcoded Matrix tube containing 10ug of transfection-ready, dried plasmid DNA (reconstitute with 100 ul of water).

Reconstitution Method:

1. Centrifuge at 5,000xg for 5min.
2. Carefully open the tube and add 100ul of sterile water to dissolve the DNA.
3. Close the tube and incubate for 10 minutes at room temperature.
4. Briefly vortex the tube and then do a quick spin (less than 5000xg) to concentrate the liquid at the bottom.
5. Store the suspended plasmid at -20°C. The DNA is stable for at least one year from date of shipping when stored at -20°C.

RefSeq: [NM_011377.2](#), [NP_035507.2](#)

RefSeq Size: 3670 bp

RefSeq ORF: 1974 bp

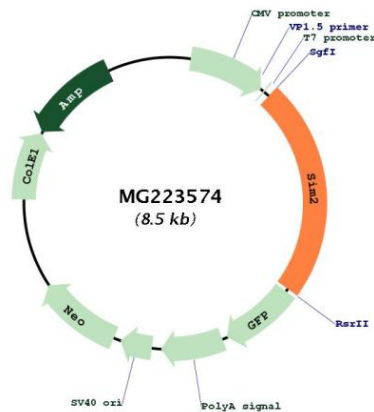
Locus ID: 20465

UniProt ID: [Q61079](#)

Cytogenetics: 16 55.05 cM

Gene Summary: Transcription factor that may be a master gene of CNS development in cooperation with Arnt. It may have pleiotropic effects in the tissues expressed during development. [UniProtKB/Swiss-Prot Function]

Product images:



Circular map for MG223574