

## Product datasheet for **MG223564**

### **Tbc1d24 (NM\_001163852) Mouse Tagged ORF Clone**

#### **Product data:**

Product Type:	Expression Plasmids
Product Name:	Tbc1d24 (NM_001163852) Mouse Tagged ORF Clone
Tag:	TurboGFP
Symbol:	Tbc1d24
Synonyms:	9630033P11; C530046L02Rik; mKIAA1171
Mammalian Cell Selection:	Neomycin
Vector:	pCMV6-AC-GFP (PS100010)
E. coli Selection:	Ampicillin (100 ug/mL)



[View online »](#)

**ORF Nucleotide Sequence:**

>MG223564 representing NM\_001163852  
 Red=Cloning site Blue=ORF Green=Tags(s)

TTTTGTAATACGACTCACTATAGGGCGGCCGGGAATTCGTCGACTGGATCCGGTACCGAGGAGATCTGCC  
 GCCGCGATCGCC

ATGGACCCCCAGGGTACAATTGCTTTGTGGATAAGGACAAGATGGATGCATCCATCCAGGACCTGGGGC  
 CAAAGGAGCTGAACTGCACGGAGCTACAGGAGCTGAAGCAACTGGCACGGCAGGGTTACTGGGCTCAGAG  
 CCACACCTGCGCGGAAAGTGTACCAGCGCTGATCCGGGACATCCCCTGCCGCACAGTACACCTGAT  
 GCCAGCGTGTACAGTGACATTGTGGGAAGATTGTGGCAAGCACAGCAGCAGTAGTCTGCCCTTGCCCTG  
 AGTTTGTAGACAACACTCAGGTGCCACCTACTGCCTGAACACACGGGGTGAAGGGGCTGTGCGCAAGAT  
 CCTCTGTGATTGCCAACCACTCCCTGACATCTCCTTCTGCCCTGCCCTGCCTGCTGTGGTGGCCTTG  
 CTACTGCACTACAGCATCGATGAAGCTGAGTGTTTCGAAAAGCCTGCCGCATCTTATCCTGCAATGACC  
 CCACCAAGAAGCTCATTGACCAGAGCTTCTGGCCTTTGAGTCTTCTGTATGACATTTGGGGACCTGGT  
 GAACAAGTACTGCCAGGCAGCCATAAACTGATGGTGGCCGTGTGAGAGGACGCTCTGCAGTCTACTCT  
 GACTGGCAGCGATGGCTCTTTGGGGAGCTGCCCTCAATTAATTTGCCCCGTGTTTTGATGTCTTCCCTG  
 TAGAAGGCTACAAAGTATTGTACCGAGTTGCTCTGGCCATCCTCAAGTCTTCCACAAGGTGAGAGCAGG  
 ACAGCCCCCTTGAGTCAGACAATGTAAGCAAGACATCCGAATGTTTGTCAAGGACATTGCCAAGACAGTG  
 TCCCCTGAGAACTACTAGAGAAGGCCTTTGCCATCCGCCTATTTCCCGAAAGGAGATCCAGCTCTTGC  
 AAATGGCCAATGAGAAAGCACTGAGGCAGAAGGGTATAACTGTCAAACAGAAGAGGCAGTTTGTGCACTT  
 AGCTGTCCATGCAGAGAAGTCCACTCAGAGATTGTCAGCGTGAAGGAGATGAGAGACATTTGGTCTGG  
 ATCCCTGAGCGCTTTGCCCTCTGCCAACCCCTCCTGCTTCTCATCACTGCAGCATGGGTACAGCCTAA  
 GCAGGTTCTATTTCCAGTGTGAAGGACATGAGCCACCCTCCTGCTCATCAAGACCCTAAAAGGAGGT  
 CTGTGGGCTTACTGTCAACAGACTGGAGCGAGAGACTAAATTCGGAGGCAAGCTGGGCTTCTTTGGG  
 ACTGGAGAATGCTTTGTTTTAGGCTGCAGCGGAAGTGCAGCGCTATGAGTGGTGGTCAATCAAACACC  
 CAGAGCTGACCAAGGCAACATCCCTCAAGTCTTCAGAGGCTGCAGGCAGTTCTTCCCTCATCAGCCACTG  
 CTCTTCAGACCCCGCTGATCGGCTCTCCCTTTCTGGCTGCCCGGCACTTCAACCTGCCCTCCAAGACT  
 GAGTCCATGTTTATGGCTGGAGGCAATGACTGCCTCATCATTGGGGGAGGAGGTGGTCAAGCACTTACG  
 TTGATGGGACCTGAATCGAGGGCGCACTGGACACTGTGACACATTCAACAACAGCCCTCTGCTCTGA  
 GAACTTCTCATCGCAGCTGTGGAGGCTTGGGGCTTCCAAGACCCTGACACCGAA

ACGCGTACGCGGCCGCTCGAG - GFP Tag - GTTTAA

**Protein Sequence:**

>MG223564 representing NM\_001163852  
 Red=Cloning site Green=Tags(s)

MDPPGYNCFVDKDKMDASIQDLGPKELNCTELQELKQLARQGYWAQSHTLRGKVVYQRLIRDIPCRVTPD  
 ASVYSDIVGKIVGKHSSSLPLPEFVDNTQVPTYCLNTRGEGAVRKILLCIANQFPDISFCPALPAVVAL  
 LLHYSIDEAEFEKACRILSCNDPTKKLIDQSFLAFESSCMTFGDLVNKYCQAAHKLMAVSEDVLQVYS  
 DWQRWLFGELPLNYFARVFDVFLVEGYKLYRVALAILKFFHKVRAGQPLESDNVKQDIRMFVKDIAKT  
 SPEKLLKAFAIRLFSRKEIQLLQMANEKALRQKGITVKQKRQFVHLAVHAENFHSEIVSVKEMRDIWSW  
 IPERFALCQPLLLFSSLQHGYSLSRFYFQCEGHEPTLLL IKTTQKEVCGAYLSTDWSERTKFGGKLGFFG  
 TGECFVFRLQPEVQRYEWWVIKHPELTKATSLKSSEAAGSSSLISHCSDPADRLSPFLAARHFNLPSKT  
 ESMFMAGGNDCLIIIGGGGQALYVDGDLNRGRTGHCDTFNNQPLCSENFLLIAAVEAWGFQDPDTE

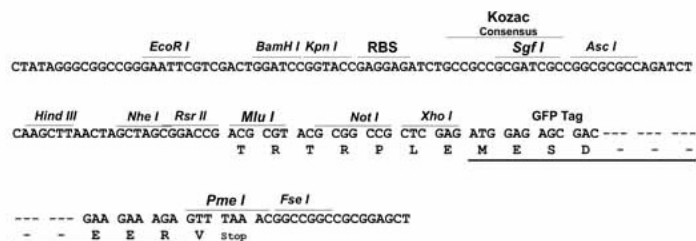
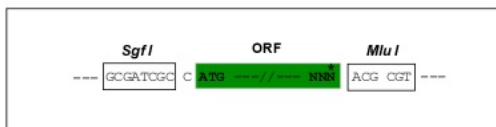
TRTRPLE - GFP Tag - V

**Restriction Sites:**

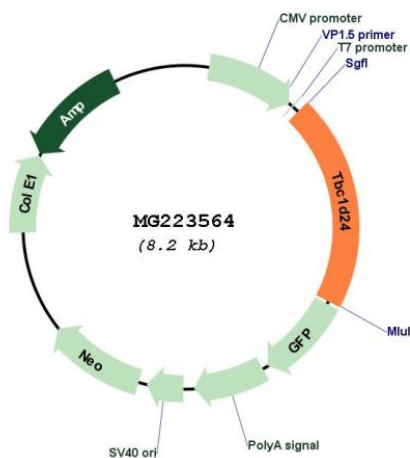
Sgfl-MluI

Cloning Scheme:

Cloning sites used for ORF Shutting:



Plasmid Map:



<b>ACCN:</b>	NM_001163852
<b>ORF Size:</b>	1665 bp
<b>OTI Disclaimer:</b>	The molecular sequence of this clone aligns with the gene accession number as a point of reference only. However, individual transcript sequences of the same gene can differ through naturally occurring variations (e.g. polymorphisms), each with its own valid existence. This clone is substantially in agreement with the reference, but a complete review of all prevailing variants is recommended prior to use. <a href="#">More info</a>
<b>OTI Annotation:</b>	This clone was engineered to express the complete ORF with an expression tag. Expression varies depending on the nature of the gene.
<b>Components:</b>	The ORF clone is ion-exchange column purified and shipped in a 2D barcoded Matrix tube containing 10ug of transfection-ready, dried plasmid DNA (reconstitute with 100 ul of water).
<b>Reconstitution Method:</b>	<ol style="list-style-type: none"><li>1. Centrifuge at 5,000xg for 5min.</li><li>2. Carefully open the tube and add 100ul of sterile water to dissolve the DNA.</li><li>3. Close the tube and incubate for 10 minutes at room temperature.</li><li>4. Briefly vortex the tube and then do a quick spin (less than 5000xg) to concentrate the liquid at the bottom.</li><li>5. Store the suspended plasmid at -20°C. The DNA is stable for at least one year from date of shipping when stored at -20°C.</li></ol>
<b>RefSeq:</b>	<a href="#">NM_001163852.1</a> , <a href="#">NP_001157324.1</a>
<b>RefSeq Size:</b>	7946 bp
<b>RefSeq ORF:</b>	1668 bp
<b>Locus ID:</b>	224617
<b>UniProt ID:</b>	<a href="#">Q3UUG6</a>
<b>Cytogenetics:</b>	17 A3.3
<b>Gene Summary:</b>	May act as a GTPase-activating protein for Rab family protein(s) (PubMed:20727515). Involved in neuronal projections development, probably through a negative modulation of ARF6 function (PubMed:20727515).[UniProtKB/Swiss-Prot Function]