

Product datasheet for **MG223560**

Itgae (NM_172944) Mouse Tagged ORF Clone

Product data:

| | |
|---------------------------|---|
| Product Type: | Expression Plasmids |
| Product Name: | Itgae (NM_172944) Mouse Tagged ORF Clone |
| Tag: | TurboGFP |
| Symbol: | Itgae |
| Synonyms: | A530055J10; alpha-E1; alpha-M290; aM290; CD103 |
| Mammalian Cell Selection: | Neomycin |
| Vector: | pCMV6-AC-GFP (PS100010) |
| E. coli Selection: | Ampicillin (100 ug/mL) |
| ORF Nucleotide Sequence: | >MG223560 representing NM_172944 Red=Cloning site Blue=ORF Green=Tags(s) |

TTTTGTAATACGACTCACTATAGGGCGGCCGGAATTCGTCGACTGGATCCGGTACCGAGGAGATCTGCC
GCC**CGATCGCC**

ATGAAGTGGCTCTCCATACCCTTCTCTGCATGGCCAGCCTGAAGCCCCAGGGAGCCTTCAATATGGATG
TGGACTGGGCCTGGGTACAGCACTCCAGCCAGGTGCACCGGCTGTGCTCAGCTCCCTTCTGCATCAAGA
CCCCAGCAACAACCAGACCTGCCTCCTGGTAGCCAGACGCAGCTCCAACAGGAATACAGCCGCCCTGTAT
CGATGCGCTATATCCATCAGTCCAGATGAAATTGCTTGCCAGCCAGTGGAGCACATCTGTATGCCAAAGG
GCAGGTACCAGGGAGTGACATTGGTCGGAACCAATGGTGTGTTTGGTGTGCATTACAGGTACAGGCCCG
GAAGTTCGCGAGCCTCAACTCAGAGCTCACGGGTGCCTGCAGCCTACTCACCCCAATTTGGACCTCCAG
GCCAAGCCTACTTCTCTGACCTCGAAGGGTTCCTGGATCCAGGAGCACATGTGGACTCTGGTGACTACT
GTAGAAGCAAAGGAGGCAGCACAGGGGAGGAGAAGAAGTCAGCCAGGAGACGCCGGACAGTGGAGGAGGA
AGACGAGGAGGAAGATGGCACTGAGATCGCTATTGTCCTGGATGGCTCAGGAAGCATTGAACCTCAGAC
TTCCAGAAGGCCAAAAATTTTCATCTCTACCATGATGAGGAACCTTCTATGAGAAGTGTGTTGAGTGAACCT
TTGCCCTGGTGCAGTATGGGGCCGTGATCCAGACTGAGTTGATCTTCAAGAGAGCCGGGACATTAACGC
CTCCCTTGCCAAAGTTCAGAGCATCGTTCAAGTGAAGGAAGTCACTAAGACCCCTCAGCCATGCAGCAT
GTCCTAGACAATATCTTCATTCCAAGCCGTGGCTCCAGAAAGAAAGCATTGAAGTCAATGGTGGTACTTA
CTGATGGTGACATATTTGGTGACCCTCTCAATCTTACGACTGTCACTCAACTCCCCAAGATGCAGGGTGT
TGTGCGCTTTGCCATTGGGGTGGGTGATGCATTCAAGAATAACAACACTTACAGAGAAGTGAAGCTGATT
GCCTCAGACCCCAAGAGGCCACACTTCAAGGTGACCAACTACTCAGCTCTGGATGGGCTGTGAGCA
AGCTGCAACAACACATCGTTTCATATGGAAGGTACAGTTGGAGATGCCCTTCAATATCAACTCGCACAGAC
TGGTTTCAGTGCCAGATCCTGGACAAGGGCAGGTGTTGCTTGGCACTGTGGGGCCTTTAACTGGTCT
GGGGTGCCTGCTCTACAGCACACAGAATGGCCGGGCTGCTTCTAAACCAGACAGCAAGGAGGACT
CCAGGACTGTACAGTACAGCTACCTAGGTTACTCCCTTGGCGTGTACACAAGGCCCATGGCATCTCTTA
CGTGGCAGGGCTCCAAGGCACAAGCTCCGTGGGCTGTGTTGAGCTCCGGAAGGAGACAGAGAGGAG



[View online »](#)

GATGCCTTTGTGCGACGGATAGAAGGAGAGCAGATGGGGTCTACTTTGGCTCTGTGCTGTGCCCTGTGG
 ATATCGACATGGATGGGACCACAGATTTTCTACTGGTGGCTGCTCCATTTTACCACATCCGTGGAGAAGA
 AGGCAGAGTCTATGTGTACCAGGTGCCTGAGCAGGATGCTTCCTTCTCCTTGGCACACACTGAGTGGG
 CACCCTGGGCTACCAATAGCCGCTTTGGCTTTGCCATGGCAGCTGTGGGGGATATCAACCAAGACAAAT
 TCACAGATGTGGCCATTGGGGCCCTCTGGAGGGTTTTGGGCAGGTGACGGGGCCAGCTATGGCAGCGT
 GTACATCTACAACGGACACTCAGGTGGCTTGTATGACAGTCTTCCCAGCAGATCCGAGCCTCCTCTGTG
 GCCTCGGACTCCACTACTTCGGCATGTCTGTGTCGGTGGGTTAGATTTCAATGGCGATGGCCTTGCCG
 ATATCACAGTTGGCTCTCGGACTCGGCGGTTGTGCTCCGCTCACGCCCTGTGGTTGACCTGACCGTATC
 TATGACCTTTACCCCGATGCACTGCCATGGTCTTCATAGGCAAGATGGATGTAATCTGTGTTTTGAA
 GTTGACTCTTCAGTCGTAGCTTCTGAGCCAGGCCTTAGAGAGATGTTCTCAACTTTACGGTGGATGTGG
 ATGTGACCAAGCAAAGGCAGAGGCTGCAGTGTGAGGACTCGAGCGGTTGTGAGAGCTGCCTCAGGAAGT
 GAACGGAGGGTCTTTCTGTGTGAACACTTCTGGCTCATCTCCACAGAGGAGCTTTGTGAGGAGGACTGC
 TTCTCAAACATCACCATCAAGGTCACCTACGAGTTCAGAGCTGGGGGAAGGAGGACTACCCCAACC
 CCACCCTGGACCACTACAAGGAACCTCTGCCATCTCCAGCTGCCCTACGAGAAGGACTGCAAGAACAA
 AGTGTTCGCATCGTGAGATCCAGCTGACCACCAACATCTCCAGCAGGAACTGGTGGTGGGCGTCACA
 AAGGAGGTGACCATGAACATCAGCTGACTAACTCTGGAGAGGATTCTCATGACAAACATGGCTCTCA
 ATTATCCAGAACTTACAGTTAAGAAGATACAAAAGCCAGTATCTCCAGATGTTCAAGTGTGATGACCC
 CAAGCCAGTTGCTTCTGTCTGGTTCATGAACTGCAAGATTGGTCAACCCATACTCAAGAGATCATCTGTG
 AATGTCTCAGTAACTTGGCAGCTAGAGGAGAGTGTCTTTCAAATAGGACAGCAGATATCACTGTGACCA
 TCTCAATTCCAATGAGAAGTCTTTGGCCAGAGAGACACGCAGCCTTCAATTCAGACATGCCTTCATTGC
 AGTTCTTTCCAGACCCTCAGTGTACATGAACACAAGCCAAAGCCCTTCTGACCACAAAGAATTCTTC
 TCAATGTGCATGGGGAGAATCTTTTGGAGCTGTATTCCAGTTGCAAATTTGTGTCATCAAATAC
 AAGATTTCCAGATTGTAAGAGTGAAGAATCTGACAAAACCTCAGGTATTTAAATGGGAGTCTGTGATTGC
 ATGGCTTTCCAAAGACTACAGATTCTCAAAGATA

ACGCGTACGCGGCCGCTCGAG – GFP Tag – GTTTAA

Protein Sequence:

>MG223560 representing NM_172944
 Red=Cloning site Green=Tags(s)

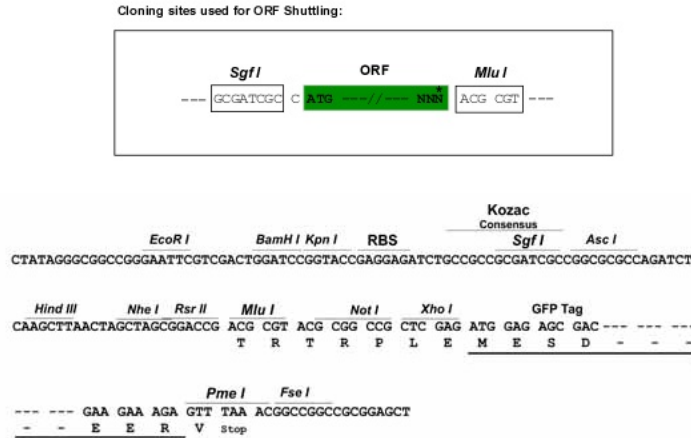
MKWL FHTLLCMASLKPQGA FNMDVDWAWVTALQPGAPAVLSSLLHQDPSNNQTCLLVARRSSNRNTAALY
 RCAISISFDEIACQPVEHICMPKGRYQGVTLVGNHNGVLVCIQVQARKFRSLNSELTGACSLTLPNLDLQ
 AQAYFSDLEGFLDPGAHVDSGDYCRSKGGSTGEEKKSARRRRRTVEEEDDEEDGTEIAIVLDGSGSIEPSD
 FQKAKNFISTMMRNFYEKCFECNFALVQYGAVIQTEFDLQESRDINASLAKVQSI VQVKEVTKTASAMQH
 VLDNIFIPSRGSRKKALKVMVVL TDGDI FGDPLNL TTVINSPKMQGVVRF AIGVGDAFKNNNTYRELKLI
 ASDPKEAHTFKVTNYSALDGLLSKLQQHIVHMEGTVGDALQYQLAQTGFSAQILDKGQVLLGTVGAFNWS
 GGALLYSTQNGRCFLNQTAKEDSRTVQYSYLGYSLAVLHKAHGISYVAGAPRHKL RGA V FELRKEDREE
 DAFVRRIEGEQMGSYFGSVLCPVDIDMDGTTDFLLVAAPFYHIRGEEGRVYVYQVPEQDASFSLAHTLSG
 HPGLTNSRFGFAMA AVGDINQDKFTDVAIGAPLEGFAGDGASYSVYIYNGHSGGLYDSPSQQIRASSV
 ASGLHYFGMSVSGGLDFNGDGLADITVGSRDSAVVLRSRPVVDLTVSMTFTPDALPMVFIGMDEVNLCFE
 VDSSVVASEPGLREMFLNFTVDVDVTKQRQLQCEDSSGCQSCLRWNGGSFLCEHFWL ISTEELCEEDC
 FSNITIKVTYEFQTS GGRRDYPNPTLDHYKEPSAIFQLPYEKDCKNKVFCIAEIQLT TNISQQELVVGVT
 KEVTMNI SLTNSGEDSYMTNMALNYPRNLQFKIQKPVSPDVQCDDPKPVASVLMNCKIGHPI LKRSSV
 NVSVTWQLEESVFPNRTADITVTISNSNEKSLARETRSLQFRHAFIAVLSRPSVMYMNSTSQSPSDHKEFF
 FNVHGENLFGAVFQLQICVPIKLDQDFQIVRVKNLTKTQVFKWESVIAWLSKDYRF SKI

TRTRPLE – GFP Tag – V

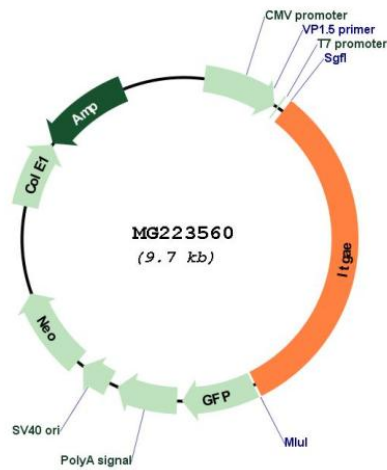
Restriction Sites:

SgfI-MluI

Cloning Scheme:



Plasmid Map:



ACCN: NM_172944

ORF Size: 3114 bp

OTI Disclaimer: The molecular sequence of this clone aligns with the gene accession number as a point of reference only. However, individual transcript sequences of the same gene can differ through naturally occurring variations (e.g. polymorphisms), each with its own valid existence. This clone is substantially in agreement with the reference, but a complete review of all prevailing variants is recommended prior to use. [More info](#)

| | |
|-------------------------------|---|
| OTI Annotation: | This clone was engineered to express the complete ORF with an expression tag. Expression varies depending on the nature of the gene. |
| Components: | The ORF clone is ion-exchange column purified and shipped in a 2D barcoded Matrix tube containing 10ug of transfection-ready, dried plasmid DNA (reconstitute with 100 ul of water). |
| Reconstitution Method: | <ol style="list-style-type: none">1. Centrifuge at 5,000xg for 5min.2. Carefully open the tube and add 100ul of sterile water to dissolve the DNA.3. Close the tube and incubate for 10 minutes at room temperature.4. Briefly vortex the tube and then do a quick spin (less than 5000xg) to concentrate the liquid at the bottom.5. Store the suspended plasmid at -20°C. The DNA is stable for at least one year from date of shipping when stored at -20°C. |
| RefSeq: | NM_172944.2 , NP_766532.1 |
| RefSeq Size: | 3813 bp |
| RefSeq ORF: | 3117 bp |
| Locus ID: | 16407 |
| Cytogenetics: | 11 45.22 cM |
| Gene Summary: | Integrin alpha-E/beta-7 is a receptor for E-cadherin. It mediates adhesion of intra-epithelial T-lymphocytes to epithelial cell monolayers. Mice expressing a null mutation of the alpha-E subunit gene exhibit a marked reduction in the numbers of intraepithelial lymphocytes in the gut and in the development of gut-associated lymphoid aggregates, supporting a specific role for this integrin in mediating retention of lymphocytes in the intestinal wall.[UniProtKB/Swiss-Prot Function] |