

Product datasheet for **MG223553**

Ptpru (NM_011214) Mouse Tagged ORF Clone

Product data:

Product Type:	Expression Plasmids
Product Name:	Ptpru (NM_011214) Mouse Tagged ORF Clone
Tag:	TurboGFP
Symbol:	Ptpru
Synonyms:	Ftp-1; PCP-2; Pcp2; PTP; PTP-lambda; Ptpf; PTPlambda; Ptpri; R-PTP-psi; R-PTP-U; RPTPlambda
Mammalian Cell Selection:	Neomycin
Vector:	pCMV6-AC-GFP (PS100010)
E. coli Selection:	Ampicillin (100 ug/mL)
ORF Nucleotide Sequence:	>MG223553 representing NM_011214 Red=Cloning site Blue=ORF Green=Tags(s)

TTTTGTAATACGACTCACTATAGGGCGGCCGGAATTCGTCGACTGGATCCGGTACCGAGGAGATCTGCC
GCC**CGATCGCC**

ATGGCCCCGGCTCAGGCTCTGGTCTGGCGCTCACCTTCCAGTTCTGCGCGCTGAGACCGAGACTCCCG
CAGCTGGCTGCACCTTCGAGGAGGCGAGTGACCCGGTCGTGCCCTGCGAGTTAGCCAGGCTCAGTATGA
CGACTTCAATGGGAGCAAGTCCGGATCCACCCGGCACCCGGACCCCTGAAGACCTGCCCATGGTGCC
TACTTGATGGTCAATGCTTCTCAGCATGCCCCAGGTCAGAGGGCCACATCATCTTCCAGACCCTGAGCG
AGAACGACACCCATTGTGTGCAGTTTCAGTACTTCTGTACAGCAGGGATGGGCACAGCCAGGCACCCCT
GGGGGTCTACGTGCGCGTGAATGGGGGCCCTCTGGGCAGTGCCGTGTGGAATATGACCGGATCCACGGC
CGTCAGTGGCACCAGGCTGAGCTGGCTGTGACACCTTCTGGCCCAATGAGTATCAGGTGCTGTTTGAGG
CCCTCATCTCCCCAGACCACAAGGGCTACATAGGCTTAGACGACATCTTGCTCTTCCAGCTATCCCTGCGC
AAAGGCCCTCACTTCTCCCGCTTGGGGACGTGGAGGTCAATGCAGGCCAGAACGCATCCTTCCAATGC
ATGGCAGCAGGCAGAGCCGAGAGGCAGAACACTTCTTCTGCAGCGTCAGAGTGGAGTGTGGTGCCTG
CGGCCGGGTGCGGCACATCAGCCACCGTCGCTTCTGGCCACTTTTCCGCTGGCTCGGTAGGCCGCTC
AGAGCAGGATCTGTACCGTTGCGTGTCCAGGCCCGCGTGGTGTGGCTCTCCAACCTTGCAGAGCTC
ATCGTCAAAGAGCCTCCACCCCATCGCGCCCCACAGCTGCTGCGTGCAGGCCACCTACCTCATT
TCCAGTCAACACCAACTCCATCATTGGCGACGGGCCGATCGTGCGAAGGAGATCGAGTACCGCATGGC
ACGGGGCCCGTGGGCCGAGGTGCACGCTGTCAACCTGCAGACCTACAAGCTGTGGCATCTGGACCCAGAC
ACTGAGTATGAAATCAGCGTGTGCTCACACGCCCGGAGATGGAGGCACAGGCCGCCCTGGGCCACCAC
TGATCAGCCGGACCAAGTGCAGAGCCACGAGGGCCCCAAAGGTCTGGCTTTTGTGAGATCCAGGC
TCGCCAGTGCACCTGCAGTGGGAGCCCTGGGCTATAATGTCACACGTTGTACACCTACGCTGTGTCC
CTTTGCTATCGTACACCCTGGGCGGCAGCCACAACCAGACCATCCGGGAGTGTGTAAGATGGAGCGGG
GTGCCAGCGCTACACCATCAAGAATCTGCTGCCATTAGAAACATCCACGTGCGTCTGATTCTCACAAA
CCCTGAGGGCGCAAGGAGGGCAAGGAGTCCAGACAGATGAAGATGTGCTGTTGGGATTGCA



GCTGAGTCCCTAACCTTCACTCCACTGGAGGACATGATCTTTCTCAAGTGGGAGGAGCCCCAGGAGCCCA
ATGGCCTCATCACTCAGTATGAGATCAGCTACCAAAGCATTGAGTCTCAGACCCAGCAGTGAACGTGCC
CGGCCCGAGACGCACCATCTCCAAACTCCGGAATGAGACTTACCACGTCTTCTCCAACTGCATCCCGGC
ACCACGTATCTGTTCTCCGTGCGTGTCTCGGACGAGCAAGGGCTTCGGCCAGGCGGCTCTCACTGAGATAA
CCACCAACATCTCAGCTCCAGCTTTGATTATGCCGACATGCCGTACCCCTGGGCGAGTCCGAGAACAC
CATCACTGTGCTGTTGAGGCCGGCCAGGGCCGAGGAGCCCCATCAGCGTCTACCAGGTGGTGTGGAG
GAAGACGGCCACGCGCTTTCGGCGGGAGCCCGAGCTCAGGACTGCTTCTCGGTACCTTGACCTTTG
AGACGGCCCTGGCTCGCGGCTTGGTGCCTACTTTGGGGCTGAACTGGCTGCCAGCAGCCTGCTTGAGGC
CATGCCCTTACCGTGGGTGACAACCAGACCTATCGTGGCTTCTGGAACCCACCGCTTGAGCCAGAAAAG
GCCTATCTCATCTATTTCCAGGCAGCAAGCCACCTGAAAGGGGAAACCCGACTGAACTGCATCCGAATTG
CCAGGAAAGCTGCGTGAAGGAGAGCAAGCAGCCCTCGAAGTGTCCAGAGATCGGAGGAGATGGGGCT
CATCTGGGCATCTGTGCAGGTGGTCTTGCCGTCTTCTCTCTCTGGGGCCATCATTGTCATCATC
CGCAAAGGAAGCCAGTGAACATGACGAAAGCCACGGTCAACTACCGCCAGGAGAAGACTCACATGATGA
GTGCCGTGGACCCAGCTTCACAGATCAGAGTACTCTGCAGGAGGATGAGCGGTTGGTCTGTCTTTAT
GGATGCTCCTGGCTATAGTCTCGTGGAGACCAGCGAAGCGGTGGTGTACCGAGGCCAGCAGCCTCCTG
GGGGTTCTCAAAGGCGCCATGCGGCCGGAAGGGTTCTCCGTATCATACCGGCCAGCTCCACCCTCGAG
TCCGAGTGGCTGACCTTCTACAGCACATCAACCAGATGAAGACAGCCGAGGGCTACGGCTTCAAGCAGGA
GTACGAGAGTTCCTTTGAGGGCTGGGACGCCACCAAGAAGAAAGACAAGCTCAAGGGCGGCCGACAGGAG
CCAGTGTCTGCCTATGATCGACACCATGTGAAACTACACCCGATGCTGGCAGACCCTGATGCCGACTACA
TCTCTGCCAACTACATAGACGGTACCACAGGTCAAACCACTTACATAGCCACTCAAGGGCCAAAGCCTGA
GATGATCTACGATTTCTGGCGCATGGTGTGGCAGGAACAGTGTGCGAGCATCGTCATGATACCAAGCTG
GTAGAGGTGGGACGGGTGAAGTGTCTCGTACTGGCTGAGGACTCAGACATGTATGGGACATCAAGA
TCACGTGGTAAAGACAGAGACTGGTGAAGTGTGGTGGTGGCAGCTTTGCCCTGGAGCCGAGAGGTTA
CTCAGCCCGGCATGAGGTCCGCCAGTTCATTTACAGCGTGGCCAGAGCATGGTGTCCCTACCAGCC
ACGGGGTCTGCGCTTCTACCGCGTGTGAAGGCTTCCACTCCACTGATGCCGGGCCATTGTATTCT
ACTGCAGTGCAGGAACTGGCCGCACAGGCTGCTACATCGTCTGGATGTGATGCTGGACATGGTGAATG
TGAGGGGGTCTGGACATTTACAACCTGTGTGAAGACCCTCTGTTCCCGACGGGTCAACATGATCCAGACG
GAGGAACAATATATCTTCATCCACGATGCAATCTTGAGGCTGCCTGTGTGGGAGACCACCATCCCTG
TCAACGAGTTCAGGCCACCTACAGGGAGATGATCCGATTGACCCTCAGAGCAATTCTCCAGCTTCG
GGAAGAGTTCAGACGCTGAACTCGGTACGCCCGCTGGATGTGGAGGAGTGTAGCATTGCCCTGCTG
CCCCGGAATCGAGACAAGAACCCTAGCATGGATGTGCTGCCACCAGACCCTGCCTGCCCTTCTCATCT
CCAGTGTGGGGACCCCAATAACTACATCAATGCAGCACTGACTGACAGCTACACACGGAGCGCCGCTT
CATCGTGACCCTGCACCCGCTGCAGAGTACCACGCCGACTTCTGGCGGCTGGTCTACGACTACGGGTGC
ACCTCCATCGTCATGCTGAACCAACTTAAACAGTCCAACCTCCGCCTGGCCCTGCTTGCACTACTGGCCGG
AGCCAGGCCGACAGCAGTATGGGCTCATGGAGGTGGAGTTTGTGTCTGGCACAGCAAACGAGGATTTGGT
GTCCCAGTGTTCGGGTGCAGAACTCTTCTCGGCTGCAGGAGGGTCACTGCTGGTACGGCACTTCCAG
TTTCTGCGTTGGTCTGCTTATCGGGACACGCTGACTCCAGGAAGGCCTTCTGCACCTGTTGGCTGAGG
TGGACAAGTGGCAGGCAGAGAGTGGGGATGGGCGCACCGTGGTGCATTGTCTCAACGGGGTGGCCGAG
TGGCACCTTCTGCGCTGTGCCACGGTCTTGGAGATGATCCGCTGTACAGCCTGGTGGATGTTTTCTTT
GCTGCCAAAACACTTCGGAACATAAGCCCAATATGGTGGAGACCATGGATCAGTATCATTCTGCTACG
ACGTGGCCCTGGAGTACCTGGAGCTCTGGAGTTGAGA

ACGCGTACGCGGCCGCTCGAG - GFP Tag - GTTTAA

Protein Sequence: >MG223553 representing NM_011214
 Red=Cloning site Green=Tags(s)

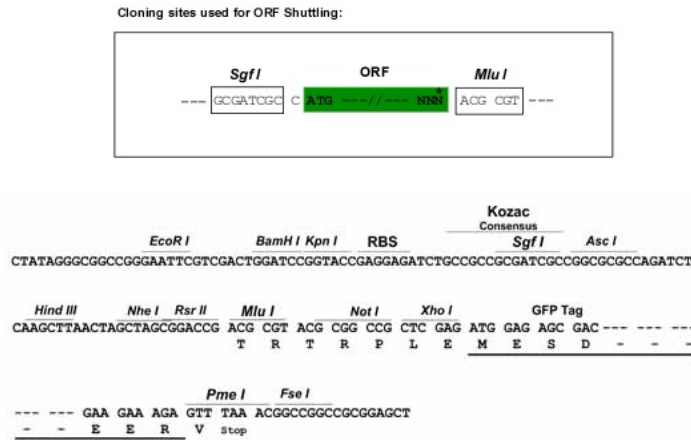
MARAQALVLALTFQFCAPETETPAAGCTFEEASDPVVPCEFSQAQYDDFQWEQVRIHPGTRTPEDLPHGA
 YLMVNASQHAPGQRAHIIFQTLSENDTHCVQFSYFLYSRDGHSPGTLGVYVRVNGGPLGSAVWNMTGSHG
 RQWHQAEALAVSTFWPNEYQVLFALISPDKGYIGLDDILLFSYPCAKAPHF SRLGDVEVNAGQNASFQC
 MAAGRAAEAEHFLLQRQSGVLVPAAGVRHISHRRFLATFPLASVGRSEQDLRYRCSQAPRGAGVSNFAEL
 IVKEPPTPIAPPQLLRAGPTYLIIQLNTNSIIGDGPVIRKEIEYRMARGPWAEVHAVNLQTYKLVHLDPD
 TEYEISVLLTRPGDGGTRPGPPLISRTKCAEPTRAPKGLAFAEIQARQLTLQWEPLGYNVTRCHTYAVS
 LCYRYTLGGSHNQTIRECVKMERGASRYTIKNLLPFRNIHVRLILTNPEGRKEGKEVTFQDDEDVPGGIA
 AESLTFPLEDMIFLKWEEPQEPNGLITQYEISYQSISSDPVNVPGPRRTISKLRNETHYVFSNLHPG
 TTYLFSVRARTSKGFGQAALTEITTNISAPSFYADMPSPLESENTITVLLRPAQGRGAPI SVYQVVVE
 EERPRRLRREPGAQDCF SVPLTFETALARGLVHYFGAELAASSLLEAMPFTVGDNQTYRGFWNPPLEPRK
 AYLIYFQAASHLKGETRLNCIRIARKAACKESKRPLEVSRSEEMGLILGICAGGLAVL ILLLGAIVII
 RKGKPVNMTKATVNYRQEKTHMMSAVDRSFTDQSTLQEDERLGLSFMDAPGYSRPGDQRSGGVTEASSLL
 GGSRRRCGRKGSPTYHTGQLHPAVRVADLLQHINQMKTAEYGFQKQEEYEFFEGWDATKKKDKLKGGRQE
 PVSAYDRHHVKLHPMLADPDADYISANYIDGYHRSNHF IATQGGPKPEMIYDFWRMVWQEQCASIVMITKL
 VEVGRVKCSRYWPEDSDMYGDIKITLVKTETLAEYVVRTFALERRGYSARHEVRQFHFTAWPEHGVPYHA
 TGLLAFIRRVKASTPPDAGPIVIHCSAGTGRGTCYIVLDVMLDMAECEGVVDIYNVCKTLCSRRVNIQT
 EEQYIFIHDAILEACLGETTIPVNEFKATYREMIRIDPQSNSSQLREEFQTLNSVTPPLDVEECISIAL
 PRNRDKNRSMVDLPPDRCLPFLISSDGPNNYINAAL TDSYTRSAFIVTLHPLQSTPDFWRLVYDYG
 TSIVMLNQLNQSNAWPCLOQWPEPGRQYGLMEVEFVSGTANEDLVSRVFRVQNSSRLQEGHLLVRHFQ
 FLRWSAYRDTPDSRKAFLLHLLAEVDKWQAESGDGRTVVHCLNGGGRSGTFCACATVLEMIRCHSLVDVVF
 AAKTLRNYKPNMVETMDQYHFCYDVALEYLEALELR

TRTRPLE - GFP Tag - V

Chromatograms: https://cdn.origene.com/chromatograms/ja1743_e02.zip

Restriction Sites: SgfI-MluI

Cloning Scheme:

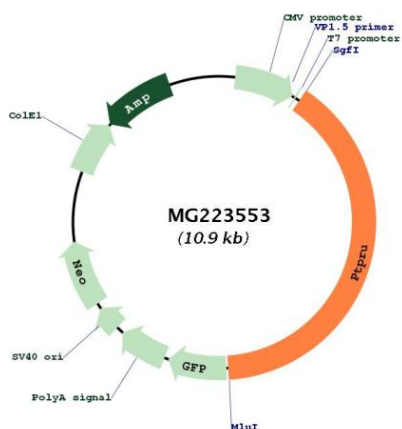


ACCN: NM_011214

ORF Size: 4308 bp

OTI Disclaimer:	The molecular sequence of this clone aligns with the gene accession number as a point of reference only. However, individual transcript sequences of the same gene can differ through naturally occurring variations (e.g. polymorphisms), each with its own valid existence. This clone is substantially in agreement with the reference, but a complete review of all prevailing variants is recommended prior to use. More info
OTI Annotation:	This clone was engineered to express the complete ORF with an expression tag. Expression varies depending on the nature of the gene.
Components:	The ORF clone is ion-exchange column purified and shipped in a 2D barcoded Matrix tube containing 10ug of transfection-ready, dried plasmid DNA (reconstitute with 100 ul of water).
Reconstitution Method:	<ol style="list-style-type: none">1. Centrifuge at 5,000xg for 5min.2. Carefully open the tube and add 100ul of sterile water to dissolve the DNA.3. Close the tube and incubate for 10 minutes at room temperature.4. Briefly vortex the tube and then do a quick spin (less than 5000xg) to concentrate the liquid at the bottom.5. Store the suspended plasmid at -20°C. The DNA is stable for at least one year from date of shipping when stored at -20°C.
RefSeq:	NM_011214.2 , NP_035344.2
RefSeq Size:	5498 bp
RefSeq ORF:	4311 bp
Locus ID:	19273
UniProt ID:	B1AUH1
Cytogenetics:	4 64.5 cM
Gene Summary:	Tyrosine-protein phosphatase which dephosphorylates CTNNB1. Regulates CTNNB1 function both in cell adhesion and signaling. May function in cell proliferation and migration and play a role in the maintenance of epithelial integrity. May play a role in megakaryocytopoiesis (By similarity).[UniProtKB/Swiss-Prot Function]

Product images:



Circular map for MG223553