

Product datasheet for **MG223547**

Nrp2 (NM_001077407) Mouse Tagged ORF Clone

Product data:

Product Type:	Expression Plasmids
Product Name:	Nrp2 (NM_001077407) Mouse Tagged ORF Clone
Tag:	TurboGFP
Symbol:	Nrp2
Synonyms:	1110048P06Rik; Np-2; Np2; Npn-2; Npn2
Mammalian Cell Selection:	Neomycin
Vector:	pCMV6-AC-GFP (PS100010)
E. coli Selection:	Ampicillin (100 ug/mL)



[View online »](#)

ORF Nucleotide
Sequence:

>MG223547 representing NM_001077407
 Red=Cloning site Blue=ORF Green=Tags(s)

TTTTGTAATACGACTCACTATAGGGCGGCCGGAATTCGTCGACTGGATCCGGTACCGAGGAGATCTGCC
 GCC**CGGATCGCC**

ATGGATATGTTTCTCTTACCTGGGTTTTCTAGCTCTGTACTTTTCAGGACACGAAGTGAAGAAGCCAGC
 AAGATCCACCCTGCGGAGGTCGGCTGAATTCCAAGATGCTGGCTACATCACTTCCCAGGCTACCCCA
 GGACTATCCCTCCCACCAAGAACTGTGAGTGGATTGTCTACGCCCCGAACCAACCAAGAAGATTGTTCTC
 AACTTCAACCCTCACTTTGAAATCGAGAAAACGACTGCAAGTATGACTTCATTGAGATTCGGGATGGGG
 ACAGTGAGTCAGCTGACCTCCTGGGCAAGCACTGTGGAAACATCGCCCCGCCACCATCATCTCCTCAGG
 CTCCGTGTTATACATCAAGTTCACCTCAGACTACGCCCGCAGGGGGCAGGTTTTCTCTACGCTATGAG
 ATCTTCAAACAGGCTCTGAAGATTGTTCCAAGAACTTTACAAGCCCAATGGGACCATTGAATCTCCAG
 GGTTTCCAGAGAAGTATCCACACAATCTGGACTGTACCTTACCATCCTGGCCAAACCCAGGATGGAGAT
 CATCTACAGTTCCTGACCTTTGACCTGGAGCATGACCCTCTACAAGTGGGGGAAGGAGACTGTAATAT
 GACTGGCTGGACATCTGGGATGGCATTCCACATGTTGGACCTCTGATTGGCAAGTACTGTGGGACGAAAA
 CACCCTCAAACCTCCGCTCGTCCACGGGGATCCTCTCCTTGACCTTTACACGGACATGGCAGTGGCCAA
 GGATGGCTTCTCCGCACGTTACTATTTGATCCACCAGGAGCCACCTGAGAATTTTCAGTGAATGTCCCT
 TTGGGAATGGAGTCTGGCCGGATTGCTAATGAACAGATCAGTGCCTCCTCCACCTTCTCTGATGGGAGGT
 GGACTCCTCAACAGAGCCGGCTCCATGGTGATGACAATGGCTGGACACCAATTTGGATTCCAACAAGGA
 GTATCTCCAGGTGGACCTGCGCTTCTAACCATGCTCACAGCCATTGCAACACAGGGAGCCATTTCCAGG
 GAAACCCAGAAAGGCTACTACGTCAAATCGTACAAGCTGGAAGTCAAGCACAATGGTGAAGATTGGATGG
 TCTACCGCATGGCAAAAACCAAGATATTTCAAAGCAACAATGATGCGACCCAGGTGGTGTCTAAACAA
 GCTCCACATGCCACTGCTGACTCGGTTTCATCAGGATCCGCCCGCAGACGTGGCATTGGGCATTGCCCTT
 CGCTGGAGCTCTTTGGCTGCCGGGTACAGATGCACCCTGCTCCAACATGCTGGGGATGCTCTCGGGCC
 TCATTGCTGATACCCAGATCTCTGCCTCCTCCACCCGAGAGTACCTCTGGAGCCCCAGTGTGCCCGCT
 GGTTAGTAGCCGCTCTGGCTGGTTTCTCGAACCCTCAAGCCAGCCAGGTGAAGAATGGCTTCAGGTA
 GACCTGGGACACCCAAGACAGTAAAGGGTTCATCATCCAGGGAGCCGAGGAGGAGACAGCATCACTG
 CCGTGAAGCCAGGGCTTTGTACGCAAGTTCAAAGTCTCTACAGCCTAAATGGCAAGGACTGGGAATA
 TATCCAGGACCCAGGACTCAGCAGACAAAGCTGTTTGAAGGGAACATGCACTATGACACCCTGACATC
 CGAAGGTTTCGATCCTGTTCCAGCGCAGTATGTGCGGGTGTACCCAGAGAGGTGGTCGCCAGCAGGCATCG
 GGATGAGGCTGGAGGTGCTGGGCTGTGACTGGACAGACTCAAAGCCACAGTGGAGACGCTGGGACCCAC
 CGTGAAGAGTGAAGAGACTACCACCCATATCCCATGGATGAGGATGCCACCGAGTGTGGGGAAAATGC
 AGCTTTGAGGATGACAAAGATTTGCAACTTCCTTCAGGATTCAACTGCAACTTTGATTTTCCGGAAGAGA
 CCTGTGGTTGGGTGTACGACCATGCCAAGTGGCTCCGGAGCACGTGGATCAGCAGCGTAACCCCAATGA
 CAGAACATTTCCAGATGACAAGAAGTCTTGAAGTGCAGAGTGTGGCCGACGAGAGGGCCAGTACGGG
 CGGCTCATCAGCCACCGGTGCACCTGCCCCGAAGCCCTGTGTGCATGGAGTTCAGTACCAAGCCATGG
 GCGGCCACGGGTGGCACTGCAGGTGGTTCGGGAAGCCAGCCAGGAAAGCAAACCTCTTTGGTTCATCCG
 TGAGGACCAGGGCAGCGAGTGAAGCACGGGCGCATTATCCTGCCAGCTATGACATGGAGTATCAGATC
 GTTTTCGAGGGAGTGATAGGGAAGGGACGATCCGGAGAGATTTCCATCGATGACATTCGATAAGCACTG
 ATGTCCCACTGGAGAAGTGCATGGAACCATATCAGCTTTTGCAGGGGGCACCTCCCGCCAGGGACCGA
 GCCCAGTGGACACGGTGCCTGTGAGCCATCCAGCCTACTGGTATTACGTTATGGCGGCCGGGGGC
 GCCGTGCTGGTGTGGCTCCGTCGCTGCCCCTGGTGTCCACTACCACCGGTTCCGCTATGCGGCCA
 AGAAGACCGATCACTCCATCACCTACAAAACCTCCCACTACACCAACGGGGCCCCCTGGCGGTGAGCC
 CACCCTAACCATTAAGCTAGAGCAAGAGCGGGGCTCGACTGC

ACGCGTACGCGGCCGCTCGAG - GFP Tag - GTTTAA

Protein Sequence: >MG223547 representing NM_001077407
 Red=Cloning site Green=Tags(s)

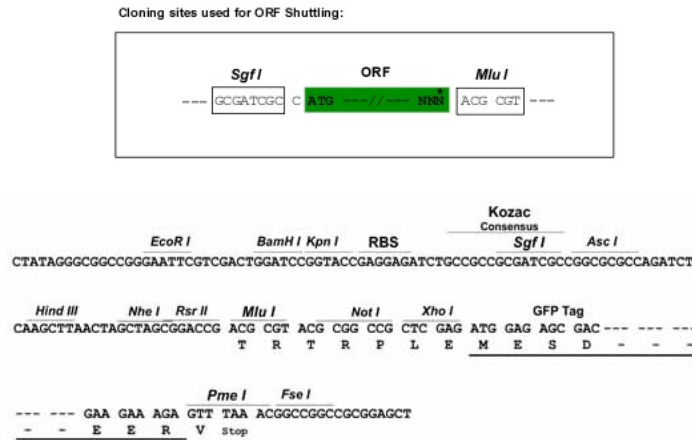
MDMFPLTWVFLALYFSGHEVRSQQDPPCGGRLNSKDAGYITSPGYPDYPSHQNCEWIVYAPEPNQKIVL
 NFNPHFEIEKHDCYDFIEIRDGSEADLLGKHCGNIAPPTIISSGSVLYIKFTSDYARQGAGFSRLRYE
 IFKTGSEDCSKNFTSPNGTIESPGFPEKYPHNLDCTFTILAKPRMEIILQFLTFDLEHDPLQVGEEDCKY
 DWLDIWDGIPHVGPLIGKYCGTKTPSKLRSSTGILSLTFHTDMAVAKDGF SARYYLHQEPPENFQCNPV
 LGMESGRIANEQISASSTFSDGRWTPQQSRLHGDDNGWTPNLDNSKEYLQVDRFLTMLTAIATQGAISR
 ETQKGYYVKSYLEVSTNGEDWMVYRHGKNHKIFQANNDATEVVLNKLHMPPLLTRFIRIRPQTHWLGIAL
 RLELFGCRVTDAPCSNMLGMLSGLIADTQISASSTREYLWSPAARLVSSRSGWFPRNPQAQPGEELQV
 DLGTPKTVKGVIIQGARGGDSITAVEARAFVRKFKVSYSLNGKDWEYIQDPRTQQTKLFEGNMHYDTPDI
 RRFDPVPAQYVRYPERWSPAGIGMRLEVLGCDWTD SKPTVETLGPVKSEETTPYPMDEDATECGENC
 SFEDDKDLQLPSGFNCNDFPEETCGWVYDHAKWLRSTWISSANPNDRTPDDKNFLKLQSDGRREGQYG
 RLISPPVHLPRSPVCMFQYQAMGGHVALQVVREASQESKLLWVIREQDQSEWKHGRIILPSYDMEYQI
 VFEGVIGKGRSGEISIDDIRISTDVPLENCMEPISAFAGGTLPPGTEPTVDTVPVQPIPAYWYVMAAGG
 AVLVLASVVLALVLHYHRFRYAAKKTDHSITYKTSHYTNGAPLAVEPTLTIKLEQERGSCH

TRTRPLE - GFP Tag - V

Restriction Sites:

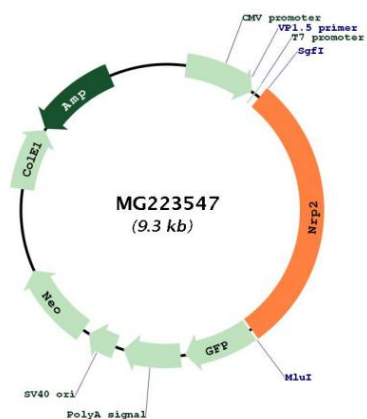
Sgfl-MluI

Cloning Scheme:



ACCN:	NM_001077407
ORF Size:	2703 bp
OTI Disclaimer:	The molecular sequence of this clone aligns with the gene accession number as a point of reference only. However, individual transcript sequences of the same gene can differ through naturally occurring variations (e.g. polymorphisms), each with its own valid existence. This clone is substantially in agreement with the reference, but a complete review of all prevailing variants is recommended prior to use. More info
OTI Annotation:	This clone was engineered to express the complete ORF with an expression tag. Expression varies depending on the nature of the gene.
Components:	The ORF clone is ion-exchange column purified and shipped in a 2D barcoded Matrix tube containing 10ug of transfection-ready, dried plasmid DNA (reconstitute with 100 ul of water).
Reconstitution Method:	<ol style="list-style-type: none">1. Centrifuge at 5,000xg for 5min.2. Carefully open the tube and add 100ul of sterile water to dissolve the DNA.3. Close the tube and incubate for 10 minutes at room temperature.4. Briefly vortex the tube and then do a quick spin (less than 5000xg) to concentrate the liquid at the bottom.5. Store the suspended plasmid at -20°C. The DNA is stable for at least one year from date of shipping when stored at -20°C.
RefSeq:	NM_001077407.1 , NP_001070875.1
RefSeq Size:	4696 bp
RefSeq ORF:	2706 bp
Locus ID:	18187
Cytogenetics:	1 C2
Gene Summary:	High affinity receptor for semaphorins 3C, 3F, VEGF-165 and VEGF-145 isoforms of VEGF, and the PLGF-2 isoform of PGF.[UniProtKB/Swiss-Prot Function]

Product images:



Circular map for MG223547