

Product datasheet for **MG223510**

Sox21 (NM_177753) Mouse Tagged ORF Clone

Product data:

Product Type: Expression Plasmids
Product Name: Sox21 (NM_177753) Mouse Tagged ORF Clone
Tag: TurboGFP
Symbol: Sox21
Synonyms: Sox25
Mammalian Cell Selection: Neomycin
Vector: pCMV6-AC-GFP (PS100010)
E. coli Selection: Ampicillin (100 ug/mL)
ORF Nucleotide Sequence: >MG223510 representing NM_177753
 Red=Cloning site Blue=ORF Green=Tags(s)

TTTTGTAATACGACTCACTATAGGGCGGCCGGAATTCGTCGACTGGATCCGGTACCGAGGAGATCTGCC
 GCC**CGATCGCC**

ATGTCCAAGCCTGTGGACCACGTCAAGCGGCCATGAACGCCTTCATGGTGTGGTCGCGGGCTCAGCGGC
 GGAAGATGGCCCAGGAGAACCCTAAGATGCACAACCTCGGAGATCAGCAAGCGCCTGGGCGCCGAGTGAA
 GCTGCTCACCGAGTCGGAGAAGCGGCCGTTTCATCGACGAGGCGAAGCGCCTGCGAGCCATGCACATGAAG
 GAGCATCCGACTACAAGTACCGGCCGCGCGCAAGCCAAAGACGCTGCTCAAAAAGACAAGTTTCGCT
 TCCCCGTGCCCTACGGCCTGGGCAGCGTGGCGGACGCCGAGCACCCGGCGCTCAAGCGGGAGCCGGGCT
 GCACGCGGGCGCGGGCGCGGCCTGGTCCCCGAGTCTCTGCTCGGAACCCGAGAAGGCGGCCGCGCA
 GCTGCCGCGCGCCGCGCGCGTCTTCTCCCGAGTCTGCGGCCGCTGCCGCGCGCGCCGCTGCCGCCG
 CCGCCGCTGGCAGCCCTACTACTGCTCGACCTGGGCTCCAAGATGGCAGAGATCTCGTCGTGTCGTC
 CGGCTGCCGTACGCGTCGTGCTGGGGTACCCACGGCGGGTGCGGGCGCCTTCCACGGGGCGGCCGCG
 GCGGCTGCTGCGGCCGCGCGGCCGCGGAGGGCACACGCACTCGCACCCAGTCCCGGCAACCCCGGCT
 ACATGATCCCGTGCAACTGCAGCGCGTGGCCAGCCCGGGGCTGCAGCCGCCGCTCGCTACATCCTGCT
 GCCAGGCATGGCAAGCCTCAGCTGGACCCCTACCCCGGGCCTACGCTGCCCGCTA

AGCGGACCGACGCGTACGCGGCCGCTCGAG - GFP Tag - GTTTAA



[View online »](#)

Protein Sequence: >MG223510 representing NM_177753
 Red=Cloning site Green=Tags(s)

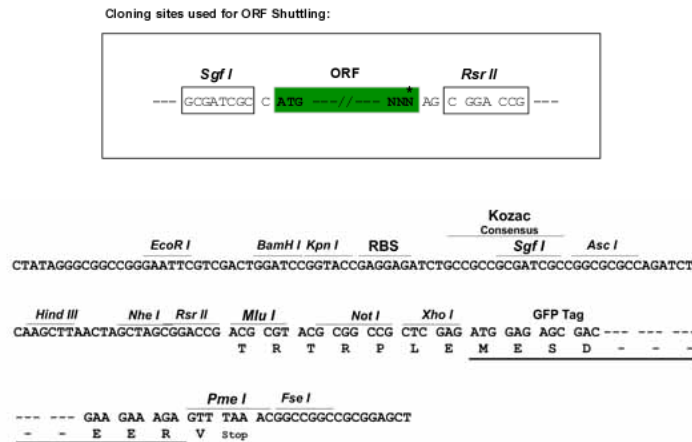
MSKPVDPVHKRPMNAFMVWSRAQRRKMAQENPKMHNSEISKRLGAEWKLLTESEKRPFIDEAKRLRAMHMK
 EHPDYKYRPRRKPKTLLKKDKFAFPVPYGLGSVADAEHPALKAGAGLHAGAGGGLVPESLLANPEKAAAA
 AAAAAARVFFPQSAAAAAAAAAAAGSPYSLLDLGSKMAEISSSSSGLPYASSLGYPTAGAGAFHGAAA
 AAAAAAAGGHTHSHSPGNGPYMIPCNSAWPSPGLQPPLAYILLPGMGKPLQDPYPAAYAAAL

SGPTRRRLE - GFP Tag - V

Chromatograms: https://cdn.origene.com/chromatograms/ja1884_a09.zip

Restriction Sites: SgfI-RsrII

Cloning Scheme:



ACCN: NM_177753

ORF Size: 828 bp

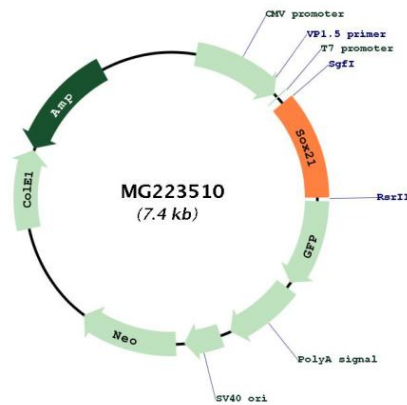
OTI Disclaimer: Due to the inherent nature of this plasmid, standard methods to replicate additional amounts of DNA in E. coli are highly likely to result in mutations and/or rearrangements. Therefore, OriGene does not guarantee the capability to replicate this plasmid DNA. Additional amounts of DNA can be purchased from OriGene with batch-specific, full-sequence verification at a reduced cost. Please contact our customer care team at custsupport@origene.com or by calling 301.340.3188 option 3 for pricing and delivery.

The molecular sequence of this clone aligns with the gene accession number as a point of reference only. However, individual transcript sequences of the same gene can differ through naturally occurring variations (e.g. polymorphisms), each with its own valid existence. This clone is substantially in agreement with the reference, but a complete review of all prevailing variants is recommended prior to use. [More info](#)

OTI Annotation: This clone was engineered to express the complete ORF with an expression tag. Expression varies depending on the nature of the gene.

- Components:** The ORF clone is ion-exchange column purified and shipped in a 2D barcoded Matrix tube containing 10ug of transfection-ready, dried plasmid DNA (reconstitute with 100 ul of water).
- Reconstitution Method:**
1. Centrifuge at 5,000xg for 5min.
 2. Carefully open the tube and add 100ul of sterile water to dissolve the DNA.
 3. Close the tube and incubate for 10 minutes at room temperature.
 4. Briefly vortex the tube and then do a quick spin (less than 5000xg) to concentrate the liquid at the bottom.
 5. Store the suspended plasmid at -20°C. The DNA is stable for at least one year from date of shipping when stored at -20°C.
- RefSeq:** [NM_177753.3](#), [NP_808421.1](#)
- RefSeq Size:** 3798 bp
- RefSeq ORF:** 831 bp
- Locus ID:** 223227
- UniProt ID:** [Q811W0](#)
- Cytogenetics:** 14 E4
- Gene Summary:** May play a role as an activator of transcription of OPRM1. Overexpression of SOX21 can up-regulate the OPRM1 distal promoter activity in mor-expressing neuronal cells. [UniProtKB/Swiss-Prot Function]

Product images:



Circular map for MG223510