

Product datasheet for **MG223483**

Rasgrp4 (NM_001174155) Mouse Tagged ORF Clone

Product data:

Product Type:	Expression Plasmids
Product Name:	Rasgrp4 (NM_001174155) Mouse Tagged ORF Clone
Tag:	TurboGFP
Symbol:	Rasgrp4
Mammalian Cell Selection:	Neomycin
Vector:	pCMV6-AC-GFP (PS100010)
E. coli Selection:	Ampicillin (100 ug/mL)



[View online »](#)

**ORF Nucleotide
Sequence:**

>MG223483 representing NM_001174155
 Red=Cloning site Blue=ORF Green=Tags(s)

TTTTGTAATACGACTCACTATAGGGCGGCCGGGAATTCGTCGACTGGATCCGGTACCGAGGAGATCTGCC
 GCC**CGGATCGCC**

ATGAACCGAAAGACATCAAAGGAAGTCTCATCAGGAATGCTCTGGGAAGGCAGGAGGGCGGGTTCGGT
 CAGCTCAGGCCCGCCGCCACAAGACGTGCCACCACCCCGGAAATCAGCAAGGTATGGCGTCCATGAA
 TCTGGGAGTGCTGAGTGAGAGCAGCTGCAGCGAAGATGAGCTATTGGAGGAATGTATCCGCTGCTTTGAC
 TCGGCTGGCAGCCTGCGCCGAGGGGACCACATTCTCAAGATGGTCTCACGATGCACAGCTGGGTGCTGC
 CATCCTCAGAGCTCGCTGCCGCTGCTGACTTCGTATCAGAAGGCTGCCAAAGATGCCAAAGAGCTAAG
 ACAGCTACAGATCTGTTACTTGGTCAGGACTGGCTGACCCATCACCATGAGGCAGTGCACCAGGAACCC
 CAGCTGGAAGCAGTCATAAGCCGGTTTTGGACCACTGTCGCTCAGGAGGGCAACATGGCCAAAGGAGCC
 TGGGAGATGCCTCCAGCCTGCTAAGTCTGGAGGGCCCGTCCCCACCTCCCATGAGCAGCCAGGCCCT
 GGGCAAGAAGCGAAAGTGTATTGCTATTCGATCACCTGGAGACAGAGGAGCTGCCACAACACCTCACT
 TACCTGGAGTTCCGGTCTTTCCAGGCTATCACACCCCAAGACCTGCGGGGCTATGTTTTGCAAGGTTTCAG
 TGAGAGTTGTCCAGCTCTGGAAGTCTGTGGGTCTGAGCAACAGTGTGTCCCGCTGGGTGCAGGTCAT
 GGTGCTGAGTCGTCTGGGCTGCACAACGTGCCAGGCTCTGGACAAATTCATTCGTGTGGCACAGAGG
 CTTACCAGCTGCAGAATTTCAACACACTGATGGCGGTACGGGGGGTCTGTGTCAAGCCATCTCCA
 GACTCAAGGACTCCCACGTTTCTGAGCCCTGACAGCACAAAGGCCCTGCTGGAGCTGACAGAGCTCCT
 CTCATCCACAACTATGCCCACTACCGCCACCTGGGCCGGCTGTACTGGCTTCCGGCTGCCAGTA
 CTGGGTGTGCACCTCAAGGACCTGGTATCTCTATATGAGGCTCATCCAGACAGATTGCCAGATGGCCGCC
 TGCACCTACCCAAGCTGAATAGCCTCTATCTACGGCTGCAGGAGCTGATGGCGCTCCAGGGACAGCATCC
 TCCTGCAGTGCCAATGAGGACCTGCTGCACCTGCTGACGCTCTCCCTGGATCTCTTCTACACGGAAGAT
 GAGATCTACGAGCTTTCTTATGCCCGGGAACACGCTGTCCCAAGAGTCTGCCACCGTCCCCCTCAAAG
 CACCAGTGGTGGTAGAGTGGGCCAGGGTGTGACACCAAAGCCAGACAGCGTGACTCTGGGTGAGCATGT
 GGAACAGCTGGTGGAGTCCGTGTTCAAGAACTACGACCCAGAAGGCCGTGGCTCCATCTCTCTGGAGGAC
 TTTGAGCGGTGTGAGGCAACTCCCGTTCGCCTGCCATGGGCTTCAACCACTCCCGCCATGGGAGTG
 GCTCCTCAGCAGAGAGGAGCTGACCAAGTACCTGCTCCATGCCAGTCCATCTGCTCCAAGCTGGGCT
 GGCCTTCTGCACGCCTCCAGGAGTACCTTCCGAAAGCCACGTTCTGTACAGCTGCAGCGGCTTC
 GTGAGCACTGGCCCTCTCTGGGGGTACCAAGCAAGGCTATCGCTGTGGGACTGTGGGCTGTGTTGTC
 ACAGACACTGCAGGGATCAAGTGAGAGTGGAGTGTAAAGAAGAGGCCAGAGACTAAGGGTGACCCGGGCC
 CCCAGGTGCACCTGTGCCAGCCACATCACTTCTCCTGCCAACTGTGGCTCAGAGGAAAGTCTCTCTAT
 ACACTCTCCCGGATCCGGAGTCTGTTGCCACCTTCGCCATGCTTGGACCCAGACGGAATCCTCACACT
 CTTCTGGGAGCCAGAGGTGGTGCCTGCCAGCACGGTCTTACCATCCAGAGCTTCTCGAAGCCAG
 CGTC

ACGCGTACGCGGCCGCTCGAG – GFP Tag – GTTTAA

Protein Sequence: >MG223483 representing NM_001174155
 Red=Cloning site Green=Tags(s)

```

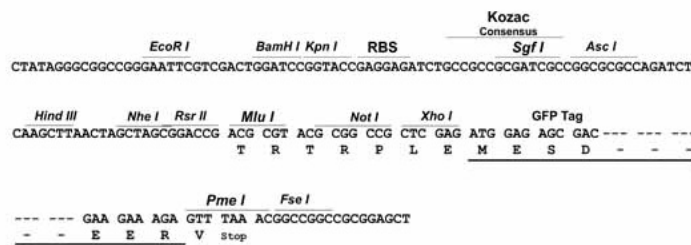
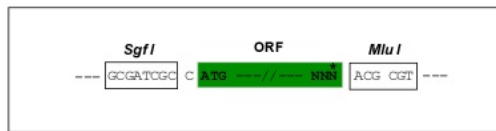
MNRKDIKRKSHQECGKAGGRGRSRQARRHKTCTPTREISKVMASMN LGV LSESSCSEDELLEECIRCFD
SAGSLRRGDHILKMVL TMHSWVLPSS ELAARLL TSYQKAAKDAQELRQLQICYL VRYWL THHHEAVHQEP
QLEAVISRFWTTVAQEGNMAQRSLGDASSLLSPGGPGPPPMSSPGLGKKR KVSLLFDHLETEELA QHLT
YLEFRSFQAITPQDLRGYVLQGSVRGCPALEGSVGLSNSVSRWVQVMVLSRP GPAQRAQVLDKFIRVAQR
LHQLQNFNTLMAVTGGLCHSAISR LKDSHVHLSPDSTKALLELE TELLSSHNNYAHYRRTWAGCTGFRLPV
LGVHLKDLVSLYEAHPDRLPDGRLHL PKLNSLYLRLQELMALQGQHPPCSANEDLLHLL TSLDLFYTED
EIYELSYAREPRCPKSLPPSPFKAPVVVEWAQGVTPKPD SVTLGQHVEQLVESVFKNYDPEGRGSISLED
FERLSGNFPFACHGLHPPPRHGSGSFSREELTKYLLHASAICSKLGLAFLHAFQEVTFRKPTFCHSCSGF
VSTGPLWGVTKQGYRCRDCGLCCHRHRCDQVRVECKKRPETKGDPPGPAPVPATSLPPANC GSEESLSY
TLPDPESGCHLRHAWTQTESSHSSWEPEV VPCPARVLP SRASSKPSV
  
```

TRTRPLE - GFP Tag - V

Restriction Sites: SgfI-MluI

Cloning Scheme:

Cloning sites used for ORF Shuttling:



ACCN: NM_001174155

ORF Size: 2034 bp

OTI Disclaimer: The molecular sequence of this clone aligns with the gene accession number as a point of reference only. However, individual transcript sequences of the same gene can differ through naturally occurring variations (e.g. polymorphisms), each with its own valid existence. This clone is substantially in agreement with the reference, but a complete review of all prevailing variants is recommended prior to use. [More info](#)

OTI Annotation: This clone was engineered to express the complete ORF with an expression tag. Expression varies depending on the nature of the gene.

Components: The ORF clone is ion-exchange column purified and shipped in a 2D barcoded Matrix tube containing 10ug of transfection-ready, dried plasmid DNA (reconstitute with 100 ul of water).

Reconstitution Method:

1. Centrifuge at 5,000xg for 5min.
2. Carefully open the tube and add 100ul of sterile water to dissolve the DNA.
3. Close the tube and incubate for 10 minutes at room temperature.
4. Briefly vortex the tube and then do a quick spin (less than 5000xg) to concentrate the liquid at the bottom.
5. Store the suspended plasmid at -20°C. The DNA is stable for at least one year from date of shipping when stored at -20°C.

RefSeq: [NM_001174155.1](#), [NP_001167626.1](#)

RefSeq Size: 4636 bp

RefSeq ORF: 2037 bp

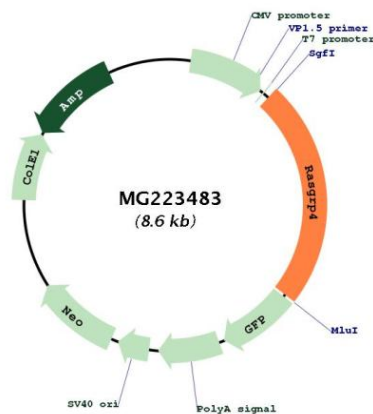
Locus ID: 233046

UniProt ID: [Q8BTM9](#)

Cytogenetics: 7 B1

Gene Summary: Functions as a cation- and diacylglycerol (DAG)-regulated nucleotide exchange factor activating Ras through the exchange of bound GDP for GTP. May function in mast cells differentiation.[UniProtKB/Swiss-Prot Function]

Product images:



Circular map for MG223483