

Product datasheet for **MG223472**

Pkp1 (NM_019645) Mouse Tagged ORF Clone

Product data:

Product Type:	Expression Plasmids
Product Name:	Pkp1 (NM_019645) Mouse Tagged ORF Clone
Tag:	TurboGFP
Symbol:	Pkp1
Synonyms:	A1528551
Mammalian Cell Selection:	Neomycin
Vector:	pCMV6-AC-GFP (PS100010)
E. coli Selection:	Ampicillin (100 ug/mL)



[View online »](#)

ORF Nucleotide
Sequence:

>MG223472 representing NM_019645
Red=Cloning site Blue=ORF Green=Tags(s)

TTTTGTAATACGACTCACTATAGGGCGGCCGGAATTCGTCGACTGGATCCGGTACCGAGGAGATCTGCC
GCC**CGCATCGCC**

ATGAACCACTCTCCGCTCAAGACCCGCTGGCGTACGAATGCTTCCAGGACCAGGACAACCTCCACGCTGG
CTTTGCCCTCTGACCAAAAGATGAAGACCGGCAGTCCGGCAGGCAGCGGTGCAGGAGCAAGTATGAT
GACCGTCAAACGGCAGAAAGTCCAAGTCTTCCAGTCGTCACCTTGAGTCACTCCAACCGAGTTCCATG
TATGATGGGCTGGCTGACAATTACAACAACTACGGCACCACGAGCAGAAGCAGCTACTTCTCCAAGTTCC
AGGCAGGGAATGGCTCGTGGGATATCCGATCTACAATGGGACCCTCAAGCGGGAGCCCGACAACAGACG
CTTCAGCTCTATAGCCAGATGGAGAATGGAGCCGCACTATCCCCGAGGCAGCTGTGCCACCCCGGGC
GCTGGCAGTGACATCTGTTTATGCAGAAAATCAAGGCAAGCCGAGTGAACCTGACCTCTACTGTGACC
CAAGGGGCACACTGCGCAAGGGCACCTGGGCAGCAAGGGCCACAAGACCACCCAGAACCGATGCAGCTT
CTACAGCACTTGCAAGTGTGCAAGGCTGTCAAGAAGTGTCCCGTGGCGCCCTCTGCACCTCCAAG
CAAGACCCGGTGTATGTGCCGCTATCTCTGCAACAAGGACCTGTCTTCGGCCACTCGAGGGCCAGTT
CCAAGATCTGCAGTGAGGACATTGAGTGTAGTGGGCTGACCATCCCCAAGGCTGTGCAGTACCTGTGCTC
CCAGGATGAGAAGTACCAGGCCATCGGAGCCTATTACATCCAGCACACCTGCTTCCAGGATGAATCTGCC
AAGCAACAGGTCTATCAGCTGGGGGCTATGCAAGCTGGTGGACCTCTCCGACGCCCCAATCAGAATG
TCCAGCAGGCTGCTGCCGGGCTGCGCAACCTGGTGTTCAGGAGCACCCCAACAAGCTGGAGACCAG
GAGGCAGAACGGAATCCGTGAAGCTGTGAGCCTCTGAGGAGAAGCGGGAGCACGGAGATCCAAAAACAG
CTGACTGGGCTCCTCTGGAACCTGTCTTCACTGATGAGCTGAAGGAGGAGCTGGTGGCCGACCCCTGC
TGTTCTGACTGACCGGGTCACTCATTCTTCTCTGGCTGGTGTGATGGTAACAGCAACATGTCCGGGA
AGTAGTGACCCTGAGGTCTTCTCAATGCTACAGGCTGCTTGAGGAACCTGAGTTCAGCTGATGCTGGC
CGCCAGACTATGCGGAACTACTCTGGGCTCATTGACTCCCTCATGGCCTATGTCCAGAAGTGCCTGGCTG
CCAGCCGCTGCGATGACAAGTCTGTGGAGAAGTGCATGTGTATCCTGCATAACCTCTCTACCGCTGGA
CGCCGAGGTGCCACCCGCTACCGCCAGCTGGAGTACAATACCCGCAATGCCTACACCGAGAAGTCTCC
ACTGGCTGCTTCCAGCAACAGGGGTGACAAGATGATGAACAATAACTATGACTGCCCACTTCCGGAGGAAG
AGACCAACCCCAAGGGCAGCAGCTGGCTGTACCACTCAGATGCCATCCGGACCTACCTGAACCTCATGGG
AAAGAGCAAGAAAGATGCTACCTTGAGGCCTGTGCTGGGGCCCTGCAAAACCTGACAGCCAGCAAGGGG
CTGATGTCCAATGATGAGTCAGTTAATTGGAATAAAGGAAAAGGGCCTGCCACAAATCGCCCGTCTCC
TGCAATCTGGCAATTCGGATGTGGTGGGTCGGGAGCCTCTCTGCTGAGCAACATGTCTCGCCACCCCTGT
GCTGCACAGAGTATGGGAAACCAGGTGTCCAGAGGTAACCAGACTCCTCACTAGCCACACCGGCAAT
ACCAGCAACTCTGAAGATATCTTGTCTCAGCCTGCTACACTGTGAGGAACCTGATGACCTCACAGCCTC
AGATGGCCAAGCAGTACTTCTCCAACAGCATGCTCAACAATGTCTTCAACTTGTGCCGCAACACTGCCTC
CTCACCTAAGGCTGCAGAGGCTGCCCGGCTACTCTGTCTGACATGTGGGCCAGCAAGGAGCTGCAGAGT
GTCCTCAGGCAGCAAGGTTTCGATAGGAATATGATGGGAAACATAGCTGGGGCAACAACCTCAGAAACT
TCACCTCCCGTTTC

ACGCGTACGCGGCCGCTCGAG - GFP Tag - GTTTAA

Protein Sequence: >MG223472 representing NM_019645
 Red=Cloning site Green=Tags(s)

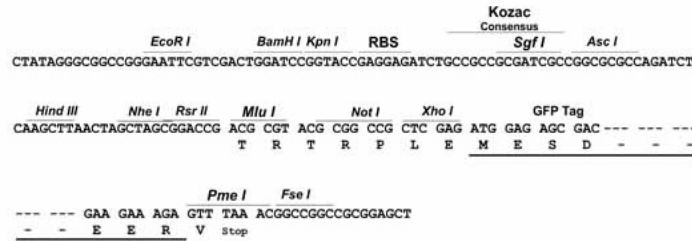
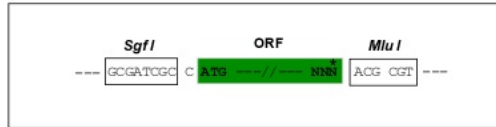
MNHSPLKTALAYECFQDQDNSTLALPSDQKMKGTSGRQRVQEQVMMTVKRQKSKSSQSSTLSHSNRGSM
 YDGLADNYYNYGTTSSRSYFSKFQAGNGSWGYPINYGLTKREPDRRFSSYSQMNWSRHYPRGSCATPG
 AGSDICFMQKIKASRSEPDLYCDPRGTLRKGTLGSKGHKTTQNRCSFYSTCSGQKAVKKCPVRPPSCTSK
 QDPVYVPPISCNKDL SFGHSRASSKICSEDI ECSGLTIPKAVQYLCSQDEKYQAIGAYYIQHTCFQDESA
 KQVYVQLGGICKLVDLLRSPNQNVQAAAAGALRNLVFRSTPNKLETRRQNGIREAVSLLRRSGSTEIQKQ
 LTGLLWNLSSDELKEELVADALPVL TDRVIIPFSGWCDGNSNMSREVVDPEVFFNATGCLRNLSSADAG
 RQTMRNYSGLIDSLMAYVQNCVAASRCDDKSVENCMCILHNL SYRLDAEVPTRYRQLEYNTRNAYTEKSS
 TGCFSNRQDKMMNNYDCPLPEEETNPKGSSWL YHSDAIRTYLNLMGKSKKDATLEACAGALQNL TASKG
 LMSNGMSQLIGIKEKGLPQIARLLQSGNSDVVRS GASLLSNMSRHPVLHRVMGNQVFPEVTRLLTSH TGN
 TSNSEDILSSACYTVRNLMTSQPQMAKQYFSNSMLNNVFNLCRNTASSPKAAEAARLLLSDMWASKELQS
 VLRQQGFDRNMMGNIAGANNLRNFTSRF

TRTRPLE - GFP Tag - V

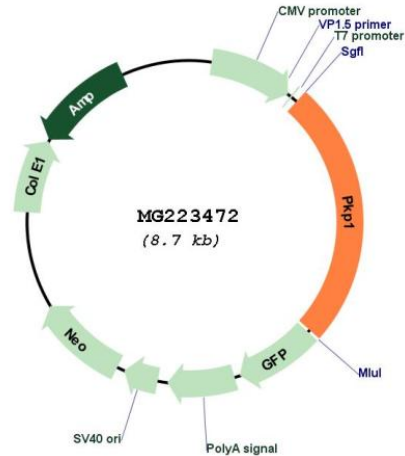
Restriction Sites: SgfI-MluI

Cloning Scheme:

Cloning sites used for ORF Shutting:



Plasmid Map:



ACCN: NM_019645

ORF Size: 2184 bp

OTI Disclaimer: Due to the inherent nature of this plasmid, standard methods to replicate additional amounts of DNA in E. coli are highly likely to result in mutations and/or rearrangements. Therefore, OriGene does not guarantee the capability to replicate this plasmid DNA. Additional amounts of DNA can be purchased from OriGene with batch-specific, full-sequence verification at a reduced cost. Please contact our customer care team at custsupport@origene.com or by calling 301.340.3188 option 3 for pricing and delivery.

The molecular sequence of this clone aligns with the gene accession number as a point of reference only. However, individual transcript sequences of the same gene can differ through naturally occurring variations (e.g. polymorphisms), each with its own valid existence. This clone is substantially in agreement with the reference, but a complete review of all prevailing variants is recommended prior to use. [More info](#)

OTI Annotation: This clone was engineered to express the complete ORF with an expression tag. Expression varies depending on the nature of the gene.

Components: The ORF clone is ion-exchange column purified and shipped in a 2D barcoded Matrix tube containing 10ug of transfection-ready, dried plasmid DNA (reconstitute with 100 ul of water).

Reconstitution Method:

1. Centrifuge at 5,000xg for 5min.
2. Carefully open the tube and add 100ul of sterile water to dissolve the DNA.
3. Close the tube and incubate for 10 minutes at room temperature.
4. Briefly vortex the tube and then do a quick spin (less than 5000xg) to concentrate the liquid at the bottom.
5. Store the suspended plasmid at -20°C. The DNA is stable for at least one year from date of shipping when stored at -20°C.

RefSeq: [NM_019645.3](#), [NP_062619.1](#)

RefSeq Size: 4486 bp

RefSeq ORF: 2187 bp

Locus ID: 18772

UniProt ID: [P97350](#)

Cytogenetics: 1 E4

Gene Summary: Seems to play a role in junctional plaques.[UniProtKB/Swiss-Prot Function]