

Product datasheet for **MG223437**

Lsamp (NM_175548) Mouse Tagged ORF Clone

Product data:

Product Type:	Expression Plasmids
Product Name:	Lsamp (NM_175548) Mouse Tagged ORF Clone
Tag:	TurboGFP
Symbol:	Lsamp
Synonyms:	5430428I19; AW046674; B130007O04Rik; D930023J12Rik; Lam; Lamp
Mammalian Cell Selection:	Neomycin
Vector:	pCMV6-AC-GFP (PS100010)
E. coli Selection:	Ampicillin (100 ug/mL)
ORF Nucleotide Sequence:	>MG223437 representing NM_175548 Red=Cloning site Blue=ORF Green=Tags(s)

TTTTGTAATACGACTCACTATAGGGCGGCCGGAATTCGTCGACTGGATCCGGTACCGAGGAGATCTGCC
GCC**CGATCGCC**

ATGGTCGGGAGAGTTCAGCCCGATCGGAAACAGTTGCCGCTGGTCTACTGAGACTGCTCTGCCTTCTTC
CCACAGGACTGCCGTTTCGACGCGTGGATTTAAACCGAGGCACGGACAACATCACCGTGAGACAGGGGGA
CACGGCCATCCTCAGGTGTGGTAGAAGACAAGAAGCTCAAAGTGGCCTGGTTGAACCGCTCTGGCATC
ATCTTCGCTGGACATGACAAGTGGTCTCTGGACCCTCGGGTTGAGCTGGAGAAGCGCCATGCTCTGGAAT
ACAGCCTCCGAATCCAGAAGGTGGATGTCTATGATGAAGGATCCTACACATGCTCAGTTCAGACACAGCA
TGAGCCCAAGACCTCCCAAGTTTACTTGATCGTACAAGTTCACCAAAGATCTCCAACATCTCCTCGGAT
GTCACTGTGAATGAGGGCAGCAATGTAACCCTGGTCTGCATGGCCAATGGGCGCCCTGAACCTGTTATCA
CCTGGAGACACCTTACCCACTAGGAAGAGAATTTGAAGGAGAAGAAGAAATATCTGGAGATCCTAGGCAT
CACCAGGGAACAGTCAGGCAAAATAGAGTGCAAGGCTGCCAACGAGGCTCCTCGCGGATGTCAAACAA
GTCAAGGTCACTGTGAATATCCACCCACTATCACGGAGTCGAAGAGCAACGAAGCCACCACAGGACGAC
AAGCTTCCTCAAATGTGAAGCCTCAGCGGTGCCTGCACCTGACTTTGAGTGGTACCGGGATGACACCAG
GATAAACAGTGCAATGGCCTTGAGATTAAGAGCACTGAGGGCCAGTCTCCCTGACGGTGACCAATGTC
ACTGAGGAACACTATGGCAACTATACCTGTGTGGCTGCCAACAAGCTCGGTGTCACCAATGCCAGCCTAG
TCCTTTTCAGTAAGTATGCCAAAACCGAGCCTGATTCCATGCAAGTCATAGAGTTCCTGCATATTGACTT
GAAATCTATCCGCCATCCCTTAAAGGTA AACCTATACAAAAA

ACGCGTACGCGGCCGCTCGAG - GFP Tag - GTTTAA



[View online »](#)

Protein Sequence: >MG223437 representing NM_175548
Red=Cloning site Green=Tags(s)

MVGRVQPDRKQLPLVLLRLLCLLPTGLPVRSVDFNRTDNITVRQGDTAILRCVVEDKNSKVAWLNRSIGI
 IFAGHDKWSDPRVELEKRHALEYSLRIQKVDVYDEGSYTCVSVQTHPEPKTSQVYLIVQVPPKISNISD
 VTNVEGNSVNTLVCMANGRPEPVIITWRHLTPLGREFEGEEYLEILGITREQSGKYECKAANEVSSADVKQ
 VKVTVNYPPPTITESKSNEATTGRQASLKCEASVPAPDFEWYRDDTRINSANGLEIKSTEGQSSLTVTNV
 TEEHYGNYTCVAANKLGVTNASLVLF SKYAKTEPDSMQVIEFLHIDLKSI RHP LKVNPIQK

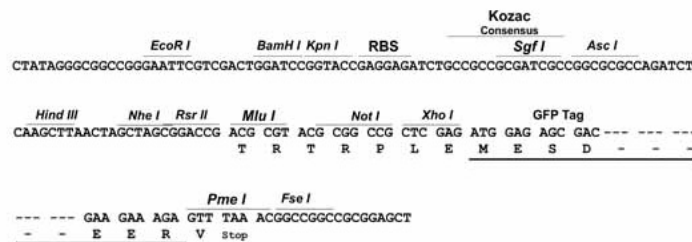
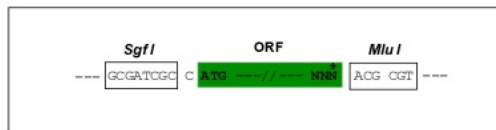
TRTRPLE - GFP Tag - V

Chromatograms: https://cdn.origene.com/chromatograms/ja1830_c02.zip

Restriction Sites: SgfI-MluI

Cloning Scheme:

Cloning sites used for ORF Shuttling:



ACCN: NM_175548

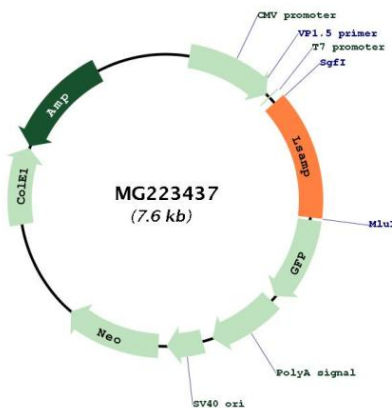
ORF Size: 1023 bp

OTI Disclaimer: Due to the inherent nature of this plasmid, standard methods to replicate additional amounts of DNA in E. coli are highly likely to result in mutations and/or rearrangements. Therefore, OriGene does not guarantee the capability to replicate this plasmid DNA. Additional amounts of DNA can be purchased from OriGene with batch-specific, full-sequence verification at a reduced cost. Please contact our customer care team at custsupport@origene.com or by calling 301.340.3188 option 3 for pricing and delivery.

The molecular sequence of this clone aligns with the gene accession number as a point of reference only. However, individual transcript sequences of the same gene can differ through naturally occurring variations (e.g. polymorphisms), each with its own valid existence. This clone is substantially in agreement with the reference, but a complete review of all prevailing variants is recommended prior to use. [More info](#)

OTI Annotation:	This clone was engineered to express the complete ORF with an expression tag. Expression varies depending on the nature of the gene.
Components:	The ORF clone is ion-exchange column purified and shipped in a 2D barcoded Matrix tube containing 10ug of transfection-ready, dried plasmid DNA (reconstitute with 100 ul of water).
Reconstitution Method:	<ol style="list-style-type: none">1. Centrifuge at 5,000xg for 5min.2. Carefully open the tube and add 100ul of sterile water to dissolve the DNA.3. Close the tube and incubate for 10 minutes at room temperature.4. Briefly vortex the tube and then do a quick spin (less than 5000xg) to concentrate the liquid at the bottom.5. Store the suspended plasmid at -20°C. The DNA is stable for at least one year from date of shipping when stored at -20°C.
RefSeq:	NM_175548.3 , NP_780757.1
RefSeq Size:	2467 bp
RefSeq ORF:	1026 bp
Locus ID:	268890
UniProt ID:	Q8BLK3
Cytogenetics:	16 B4
Gene Summary:	Mediates selective neuronal growth and axon targeting. Contributes to the guidance of developing axons and remodeling of mature circuits in the limbic system. Essential for normal growth of the hippocampal mossy fiber projection (By similarity).[UniProtKB/Swiss-Prot Function]

Product images:



Circular map for MG223437