

Product datasheet for **MG223432**

Rev3l (NM_011264) Mouse Tagged ORF Clone

Product data:

Product Type:	Expression Plasmids
Product Name:	Rev3l (NM_011264) Mouse Tagged ORF Clone
Tag:	TurboGFP
Symbol:	Rev3l
Synonyms:	Rev; Rev3; Sez4
Mammalian Cell Selection:	Neomycin
Vector:	pCMV6-AC-GFP (PS100010)
E. coli Selection:	Ampicillin (100 ug/mL)
ORF Nucleotide Sequence:	>MG223432 representing NM_011264 Red=Cloning site Blue=ORF Green=Tags(s)

TTTTGTAATACGACTCACTATAGGGCGGCCGGAATTCGTCGACTGGATCCGGTACCGAGGAGATCTGCC
GCC**CGATCGCC**

ATGTTTTCTGTGCGGATAGTGACTGCCGACTACTACATGGCCAGCCCGCTGCCGGGGCTGGATACCTGCC
AATCCCCGCTCAGCCAGCTCCCTGTCAAGAAGGTGCCGGTGTACGAGTCTTCGGGGCGACCCCGCAGG
TCAGAAGACATGTCTTCTACATGGCATCTTCTTACCTCTATGTGCCATACGATGGTTATGGACAG
CAGCCAGAAAGCTATCTTCTCAGATGGCATTAGTATCGACAGAGCACTTAATGTGGCTTTAGGCAATC
CATCTTCCACTGCTCAGCATGTGTTCAAAGTGTGATTAGTATCAGGAATGCCTTTTTATGGTTATCATGA
GAAGGAAAGACACTTTATGAAGATCTATCTTACAATCCTGCAATGGTAAAAGGATATGTGAACCTTTG
CAAAGCGGAGCCATAATGAATAAATGTTACCAGCCTCATGAAGCGCATATTCCTACCTCTACAGCTCT
TCATTGACTACAACTTTATGGAATGAATTTAATAAACCTGGCTGCTGTCAAGTCCGAAAAGCAAGAAG
GAAAGGTAATGCATCACATGCAACTGGATTATTCAAGCATCAATTGTCAGGAAATTCCTCTGCTGGCACT
TTATTTAGGTGGGAGAGGATGAAATACCAAGTCTTTATTGTTGGAAGGTGTTGAACCCCTGAGTACAT
GTGAAGTAGAAGTGGATGCCGTAGCTGCTGACATCTTAAATAGGCTGGACATTGAGGCTCAGATTGGTGG
AAACCTTGGGCTGCAGGCCATATGGGAAGATGAAAAACAGCGGAGAGAAAACAGGAACGAAAGCTCTCAA
ATCAGCCAGCCGAGTCAACAAGTTGCAGATTGTACCAGCAACAGAAAGTAAAAACAATTTTCAGAAGA
GACTTCAAGAAGTTCTCAACAGAATGATTTCTCAGTAACATTATCAGGATCTGTGGACTACAGCAATGG
ATCCCAAGAGTTCTCTGCTGAGTTAACATTACACTCGGAGATTCTTTCTCCTGAAATGCTACCGTGTTC
CCAGCTAATATGATAGAAGTCCACAAAGACACAGATTTGAGCAAAGGTAATACTAAACATAAAGTAGAAG
AAGCACTTATTAATGAAGAAGCAATTTTGAACCTCATAGAAAATAGTCAGACTTTTCAGCCTTTGACTCA
AAGACTGAGTGAGACACCAGTTTTCATGGGCGTAGTCTGATGAGTCGCTGGTCCATCTTCTGCTGGT
TTGGAAAGTGTGGATATCAAGGAGAAAAGAATAGGATGCCATTACCATGCTACTCTTTGGAGAATCTC
AAAACCCCAAAATAGTGACGATGAAGAGAACGAACCCAGATTGAGAAGGAGGAGATGGAGCTTAGTGT
GGTGTATGCCAGAGATGGGACAGTGACATTGAAGAACATTGTGCCAAAAAGAGGTCCTGTGCAGAAAT



GCCCACAGAAGTTCTACCGAAGAAGATGACTCGTCTCCTCAGAAGAGGAAATGGAGTGGACCGATAATAGTT
 TGCTTTTTGCCAATCTCTCTATACCTCAGTTAGATGGAAGTGCAGATGAAAATAGTGACAATCCATTA
 CAATGAAAATTCTAGAGCCACTCTTCTGTGATTGCAACGAGCAAGCTATCAGTAAGACCCTCCATCTTT
 CACAAAGATGCTGCTACATTAGAACCCTCCGTCTTCTGCTAAGATTACCTTTCAGTGTAACACACAAGTG
 CCCTTTCTTCCCATGTTTTAAACAAAGATGGTTAACTGAAGACCTTTCACAACCAACAGTACAGAAAA
 AGGTCGAGATAATTGAGTCACTTTTACAAGGAAAGTACTTACTCCATGAAGTACTCTGGCTCTTTAAGT
 AGTACTGTTTACTCAGATAATCCCAAAAGAGATTTGTAAAGAAAGACAAGTCTTTGCCGGTATCTTCCCT
 GTGAAAGTAGTGTTTTTGATTATGAAGAAGATATCCATCTGTTACAAGACAAGTACCAAGTAGAAAAGTA
 CTCGAACATGAGAAAGATTGAAAAGGATGCCTCTTGCATACATGTGAACCGTCACATTAGTGAGACTATA
 TTGGGGAAAAACTCTTTCAACTTTGCTGACTTAAATCATTCAAAACGTAAATTATCCTCTGAAGGAAACG
 AAAAGGGAAACAGCACATCTCTCAGTGGTGATTTCCCTCTTCGTAACGGAAAAGTGTGACTTGTGCTCC
 GTCTTCGGGGGAGAACAGAAAGTATGGCCATTCTCTTGAGAGCATCACTGATGAGAGTGGACTAAACAAA
 CTTAAATCAGATACGAAGAATCCAAGAGCATAAGATGGAAAAGCCAAGTCTCAGCCAGCAAGCAGCAC
 ATTATATGTTTTTCCCAGTGTGTTCTTCTAATTGTCTCACTAGGCCACAGAACTTTCTCCTGTCCAC
 ATACAAATTACAATCTGGCAATAAACCTTCCAGGTTAAAATTGAATAAAAAGAAATTAATAGGTCTTCAG
 GAAACTTCTACCAAAAGTACTGAAACTGGAGCCACAAAAGACAGCTGTACACATAACGATCTGTACTCTG
 GTGCTTCCGAAAAGGAGAAATGGATTGAGTAGTACTCAGCTAAAGCTACTCATGGGACCTTTGAAAATAA
 ACCACCTACAGAACATTTTATAGACTGTCACTTTGGAGATGGGTGCTTAGAAGCTGAGCAGTCTTTTGG
 CTATATGGAAATAAATACTCTGAGAGCCAAACGCAAGGTGAATTATGAAAACAGAAGATAGTGAGTCAA
 GTTTTGTAAACACAGAAGTCAAAAATTAGCCTACCTCATCCCATGGAAATCGGTGAAAATTTAGATGGAA
 TCTCAATCCCGAAAACGAGAAAAATGTCTAAAAAGTGGCCCTGTCTTATAAAGTATATTATTATT
 AATAGATTTAGAGGGAGAAAAAATGCTTGTGAAACTAGGTAATAAGATTCTAAAGAAAAACAAGTAA
 TATTAAGTGAAGAAAAAATGGAACCTTATAAAAAGCTTGCACCTTTGAAGGATTTCTGGCCAAAAGTTCC
 TGACTCCCTGCAACCAATATCCCATTTTCCACTAACACCAAAAGAGAGTACAGAAAGGAAATCAAAA
 CATAAATCTGCTAAGAAAAAACCTGGTAAGCAACACAGAACAAACAGTAAAAATTTAAAAAGAACTTTAT
 CTTTCCGAAAAGAGCGGACACATGCTGTCTTTCTCCTCCCTCCCATCATACATTGCTGAAACCGAAGA
 CTGTGACTTGAGTTATAGTGACGTTATGTCAAAGCTAGGCTTTCTTTCTGAGAGAAGCACAAAGCCCTATC
 AATTCCTCTCCACCAGCTGCTGGTCTCCACAGACCCGAGAGCTGAAGAAATTTAGGCTGCTGCAGAAA
 AGGAATCGATGCTTTTTAAGGGTCTAATGTATATAACACTAAGACTGTTAGTCTCGGGTAGGAAAAGC
 TAGTCGAGCAAGAGCACAGGTTAAGAAGTCAAAAGCAAGACTTGCTAACTCCTCTGTAGTTACTAACAAA
 AGAAACAAACGGAAATCAGACAATAAAGTAGTGGATGATGAAAAGAAGAAACCAAGGACAAAGCAGAAAC
 AGAGAGCCAAATGAGAAAAGTCTGTCAAGGAAACATGCAATACCTGCGGACGAAAAGATGAAACCCGACTC
 TGAGGCTGAGCTCACACCGAACCCAGAGTGTGTCTGAGCTCACAAGTAGTTCTGGCGCTCAAGCACTT
 TCTAAACAGAAAGAGATGTCACAGACAGGCCCTGCCGTGGATCACCTCTTCTCCTGCCCAACCCACTG
 GAATTAGTGCACAACAGCGGCTGTCAACTGCTTTTCTCATTCTTAGAAAAGCAAGAAGTCTGTAGATTT
 GCGAACATTTCCAGTTCGAGAGATGATTCACATTTCTTCTGTTGTTTATAGTTCTATAGGGCCCGGAATC
 TCAAAAATTAATATTCAGAGATCTATAATCAAAGTGTATGTTACTCGAAAGGAAACAACCTTGATTC
 AAAAAAGCATATTTGACCTTTCTAACCTTTGTCTCAGGTAGCACAGAGTACACAGGTATGTTGAGGTAT
 AATATCTCCAAAGACAGAGGAGAGCTCAAGTACACAAAAAACTGTGGGTATCTATGGGAAAGTTAAAT
 GAGTATCGCAGTTCCCTAGAATCAAAGCCAGAACAAGTCTGTGCCCTAATTTTTTGCAGTGCAAAGACA
 GTCAGCAGCAGACTGTGAGTGTGCAGAACAAATCAAAAACAGTAAAAGTGTCTCCAGGGAATGCAGC
 TTCTGAGGAGAGCCAGACACCTAATGTTTTGTCACTTCTTTGAAAAGTCCCATCAAAACAAATAGCATGG
 GAGCAAAAACAGAGGGGCTTTATTTTAGATATGTCTAATTTTAAAGCTGAAAAGGTAACAAAGGTCAT
 TGTGAGAAAGCAATTTACAAACCAAGCGCTGTCTCAATGTAAGAATCAAAATGTATCAACACCTTCAGT
 ATTTGGTGAAGGACAATCTGGGCTAGCTGTTCTAAAAGAATTGTTACAAAAAGACAACAGAAAGCACAA
 AGTACAAATGTCGTACAAGACTCAACGTCTACTCATCAGCCAGATAAGAATATTTCTGTTTCTAATGAGC
 ATAAGAAAGCAATAAACGAACACGACCGACTTCTCAAGAAAACCTCGAACTCCAGAAAGAACAAA
 ACCTAAGGAACAAACCCCGAGAGCTTAAAAGTAGACCCTCTAAACCTGCAGACCTCTGGCCACTTGGAT
 AATTCCTATCAGATGACAGTCCCATCCTTTTCTCAGATCCAGGTTTTGAAAAGTGTATTCACTTGAAG
 ATAGCCTGTCTCCTGAACATAATTATAATTTGATATTAACACAATTGGCCAGACTGGATTTTGTAGCTT
 TACTCTGGTAGTCAGTTTGTCCAGCTGATCAGAATTTGCCGAGAAAGTTTCTGAGCGATGCTGTTTCA
 GATCTTTTTCCAGGACAAGCTATAGACAAGAGTGAAGTCAAGTACGACAGACAGAGTTGTAGTGAGG

AAAAGCACCATGTCTCCGACTCCAGCCCATGGATCAGAGCCAGTACTTTAAACCCCGAACTTTTTGAGAA
AGTAGCTATGGATAACAATGAGAATCATCGGCACAGCCAGTGGAAAAATAGCTTTTCATCCTCTGACATCT
CATTCTAACTCAATAATGGAACTTTTCTGTGTCCAGCAAGCAGAGAAGTGTCTAACAGAAAAATCAAGAC
TGAATAGGAGTTCAGTGAGTAAGGAAGTGTCTCAGTCTCCACAGGCAAAACAGTTCAGACTGGATTCA
AGGTATAAACCAGAAAGAAGCAGATCAGTCTCTCCACTGTCTAATACCTTTTTACTACCATCTTTCC
TCCCCTGATGGGAACTGTGGACGCAGCTTCGGAAGATTTAGAATTGTATGTCTCAAGGAACAATGATG
TGTTGACACCAACTCCTGATAGTTCACCAAGGTCTACCAGTTCCTCCTTACAGTCAAAAAATGGCAGTTT
TACTCCTCGAACTGCTCATATTCTGAAACCACTTATGTCCCACCAAGTAGGGAAGAAATTTGGCAACT
TTGCTAGATCATGATCTTTCAGAAGCTATATATCAGGAACCATTTTGCAGTAATCCTTCCGATGTGCCAG
AAAAGCCAGGAAATTTGGTGGCCGGCTCCTAATGGTGGAAACTCGACTTCCAAACGACCTGATTGAATT
TGAAGGAGACTTTTCTTGAAGGACTTCGCCTGTGGAAAACAGCATTCTCAGCAATGACTCAGAATCCC
AGACCAGGTCCTCCTCGAATGGCCAAAGCAGTGTCAATAAAGAGTCAAGTAATAGCCATAAGATGG
TAGAAGATAAAAAAATTGAATTATGCCTTGAAGTATGTCCAAGTCGGAAGTGGTTCAGCATGGCT
TCAAGCCAAAGAAGAATATGAACGTTCAAAGAACTCCCTAAAACCGAGTAACTCCAGTGACAAAACT
GCTGAAAAATGTCAGCCCTTCACTTAATCCAGGTGACACATGTGCAGTCTCTCCACAAGTGGATAAATGCC
CACATACACTTTCTTCTTCTGCACATACCAAGGAAGAAGTCAGTAAGTCTCAAATTTGCTTTGCAACATC
AACTACAGGATGCAGTCAGACACTGCTAGCAGCTGCCTCTGCAGCTGTCCCTGAGGAAGATGAAGATGAT
AATGATAACTGTTATGTTAGTTACAGCTCCCCTGATTCTCCAGGTATTCCACCTTGGCAGCAGGCAGCAT
CCCCAGACTTCAGATCATTAAACGGGGATGACAGACATTCATCACCAGGAAAGGAGCTTTGCTCCCTAGC
TGTTGAGAACTTCTTAAAGCCAATAAAGATGGTATCCAAAAAGCTCCTGCTCTGAATCGTGGGAGCCT
CAAGTGATCTCTCAATCCATGCTAGGGCAAGAAGTGGGAAGTGGGATCCACTTTGCCTTCATAGCACAC
CAGTTATGCAGAGGAAATCTCTGGAAAAGCTTCTGAAGCAACTGGCCTTAGCCCTTATCTGTAGAACC
AAAAACCCAGAAGTTGTATAATAAGAAAGGAAGTGTCTGATGGTCTCAGGAGAGTTCCTCTGACAACG
CAAGTGGAGAATCAGTTTGGCGCAGTAAATACTCCAAAGAAAGAAACTTCTCAGATTGATGGACCTCCT
TAAACAATACCTACGGTTTCAAAGTCAGCATACAGAACTTACAGGAGGCAAAAGGCTTTACACGAGATACA
AAATCTGACCTTAATCAGTGTGGAGTTACATGCTCGAACTAGAAGAGACTTACAACCAGATCCTGAGTTT
GACCCAATCTGTGCTTTGTTCTACTGCATTTTCATCTGACACTCCACTCCCAGACACAGAAAAACAGAAC
TCACGGGTGTAATCGTAATTGATAAGGACAAGACAGTCACCCATCAAGATATTAGAAGTCAGACCCCGTT
ACTTATCAGATCTGGAATTACAGGATTAGAAGTAACTACGCTGCTGATGAGAAGGCTCTCTTTCAGGAG
ATTACAAATATAATAAAGAGGTATGACCCTGACATTCTGCTAGGCTATGAGATTCAGATGCACTCCTGGG
GCTACCTCTTACAGAGGGCGGCTGCTCTGAGCGTGGACTTATGTCAGATGATCTCTCGAGTGCCGGATGA
CAAAATGAAAACAGATTTGCAGCAGAAAGAGATGACTATGGATCAGATACAATGAGTGAATCAATATT
GTTGGAAGAATTACCCTGAACCTTTGGAGAATAATGAGAATGAGGTTGCCCTGACTAACTACACTTTTG
AAAATGTGAGCTTTCATGTTCTCCATCAGCGTTTCCCCCTTTTTACCTTCCGAGTCTTGTGCGACTGGTT
TGATAATAAGACAGATCTCTACAGATGGAAAAATGGTTGATCATTATGTCAGCCGTGTCCGTGGAAATCTC
CAGATGTTAGAACAGCTGGACCTAATGGGAAAACCAAGTGAATGGCCAGACTTTTTGGCATTGAGTTTT
TACATGTATTAACAAGAGGTTACAGTACCGTGTGGAGTCAATGATGTTGCGTATTGCCAAACCAATGAA
CTATATTCCTGTGACACCTAGTATTCAACAGAGATCCCAATGAGAGCCCCACAGTGTGTTCCCCCTCATT
ATGGAGCCTGAGTCTCGTTTCTATAGCAACTCTGTTCTTGTCTGGATTCCAGTCACTATATCCTTCAA
TTGTGATAGCATATAACTACTGCTTTTCCACTTGCCCTGGCCATGTAGAGAATTTGGGAAAGTATGATGA
GTTCAAATTTGGCTGTACCTCTCTAAGAGTACCTCCAGATTTACTTTATCAAATTAGGCATGACGTCACA
GTGTCCCCAATGGAGTAGCTTTCGTCAAGCCTTCTGTACGAAAGGGTGTCTACCAAGAATGCTTGAAG
AAATTTGAAAGACTAGATTGATGGTGAAGCAGTCAATGAAGTCTTACAAGCAGGACAGAGCCCTGTCACG
GATGCTCAATGCCGTCAACTAGGACTAAAGCTGATAGCAAAATGTCACGTTTGGCTATACGGCTGCTAAT
TTTTCTGGGAGAATGCCGTGCATTGAGGTTGGTATAGCATTGTTCAAAAGCCAGAGAGACCTTGAAC
GAGCAATTAAGTGAATGATACCAAGAAATGGGGTGTAGGGTTGTTTATGGTGATACTGACAGTAT
GTTTGTACTACTGAAAGGAGCCACCAAGGAGCAGTCTTTAAGATTGGTCAAGAAATTTGCTGAAGCTGTT
ACTGCTACTAATCCTAGGCCAGTGAAGTGGAAAGGTTGAAAGGTTGTTTGGCCCTGTGTTTTGCAACAA
AAAAGAGATATGTGGGCTACATGTATGAAACGCTGGATCAGAAGGAGCCAGTATTTGATGCGAAAGGAAT
AGAAACAGTCAGAAGAGACTCTTGCCCTGCTGTCTAAGATACTTGAGCGTTCTCTAAAGCTGCTGTTT
GAAACAAGAGATATTAGTCTAATTAACAGTATGTACAGCGACAATGATGAAACTTGTGGAAAGGGAAGG
CCAGCATCCAAGATTTTATCTTTGCTAAAGAGTACAGAGGAAGTTTTTCTTACAGGCCTGGAGCCTGTGT

TCCAGCCCTTGAACCTACAAGGAAAATGCTTGCTTATGATCGGGCCTCTGAGCCTCGAGTTGGAGAACGA
GTGCCATATGCATCATTATGGGACCCCTGGACTACCCCTTATCCAGTTGATAAGGCGCCAGCAGAAG
TCTTACAGGATCCCACTCTGAGGCTGAATGCCACTTACTATATCACCAAACAAATTTCCACCCCTGGC
CAGAATCTTCTCTTATTGGTATTGATGTCTTCAGCTGGTATCAAGAATTACCAAGGATCCAGAAAGCT
ACCAGCTCCTCCAGAAGTGAACCTGAAGGGCGAAAGGCACTATCTCTCAGTATTTCACTACTTTGCACT
GTCCTGTGTGTGATGACCTGACTCAGCATGGTATCTGTAGTAAATGTCGGAGCCAACCTCAGCATGTAGC
AATCATCCTCAACCAAGAAATTCGAGAATTGGAGCGTAAACAGGAGCAGCTTATAAAGATATGCAGGAAC
TGTACAGGTTCCCTTGACCGACATATCCCGTGTGTTCCCTCAACTGCCCGTACTTTTCAAACCTCAC
GAGTAAACAGAGAATTATCCAAGGCCCGTACCTGCGACAGTTACTGGACCAGTTT

ACGCGTACGCGGCCGCTCGAG - GFP Tag - GTTAA

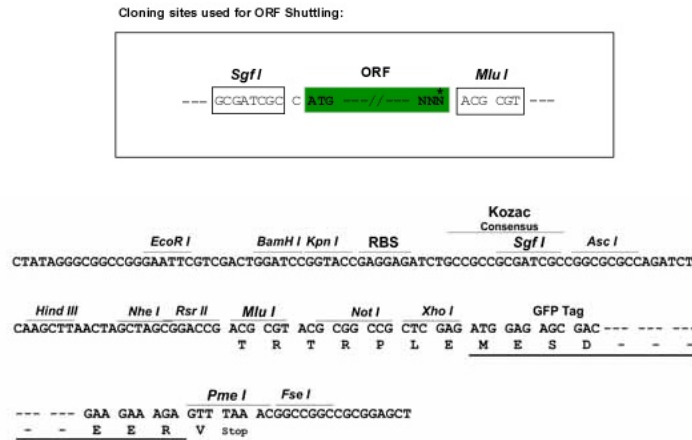
Protein Sequence: >MG223432 representing NM_011264
 Red=Cloning site Green=Tags(s)

MFSVRIVTADYYMASPLPGLDTCQSPLTQLPVKKVPVVRVFGATPAGQKTCLHLHGIFPYLYVPYDGYGQ
 QPESYLSQMAF SIDRALNVALGNPSSAQHVFKVSLVSGMPFYGYHEKERHFMKIYLYNPAMVKRICELL
 QSGAIMNKCYQPHEAHIPYLLQLFIDYNYLGMNLINLAAVKFRKARRKGNASHATGLFKHQLSGNSPAGT
 LFRWEDEIPSSLLLEGVEPLSTCELEVDAAADILNRLDIEAQIGGNPGLQAIWEDEKQRRRRNRNESSQ
 ISQPESQDCRFVPATESEKQFQKRLQEVLKQNDFSVTLSGSVDYNGSQEFAELTLHSEILSPEMLPCS
 PANMIEVHKDIDLKSGNTKHKVEEALINEEAILNL IENSQTFQPLTQRLSETPVFMGSSPDESIVHLLAG
 LESDGYQGEKNRMPLPCHSFGESQNPQNSDDEENEPQIEKEEMELSVVMSQRWSDIEEHCAKKRSLCRN
 AHRSSTEEDSSSEEMEWTDNSLLFANLSIPQLDGTADENSNDPLNNENSRAHSSVIATSKLSVRPSIF
 HKDAATLEPPSSAKITFQCKHTSALSSHVLNKDGLTEDLSQPNSTEKGRDNSVTFTEKSTYSMKYSGSL
 STVHSDNSHKEICKKDKSLPVSSCESSVFDYEDIPSVTRQVPSRKYSNMRIEKDASCIHVNRHISETI
 LGKNSFNADLNHSKRKLSSEGNEKGNSTSLSGVFPSSLTENCDLLPSSGENRSMASLESITDESGLNK
 LKIRYEEFQEHKMEKPSLSQQAHYMFPSVVL SNCLTRPQKLSPVTYKLSQGNKPSRLKLNKKKLIQLQ
 ETSTKSTETGATKDSCTHNDLYTGASEKENGLSSDSAKATHGTENKPPTEHFIDCHFGDGSLEAEQSGF
 LYGNKYTLRAKRKVNYETEDSESSFVTQNSKISLPHPMIEIGENLDGTLKSRKRRKMSKKLPPVIIKYYII
 NRRFRGRKNMLVKLGKIDSKEKQVILTEEMELYKLLAPLKDFWPKVPDSPA TKYPIYPLTPKKSRRKSK
 HKSAKKPKGKQHRNSENIRKRLSFRKKRTHAVLSPSPSYIAETEDCDLSYSDVMSKLGFLSERSTSPI
 NSSPPRCWSPTDPRAEEMAAAEKESMLFKGNVYNTKTVSPRVGKASRARAVKKSARLANSSVVTNK
 RNKRNTTKLVDDGKKKPRAKQQRANESLSRKHAIPADEKMKPHSEAE LTPNHQSVSEL TSSSQAAL
 SKQKEMSQTGPAVDHPLPPAQTGISAQQLSNCFSSFLSKKSVDLRTFPSSRDDSHSSVVYSSIGPGI
 SKINIQRSHNQSAMFTRKETT LIQKSIIDL SNHLSQVAQSTQVCSGII SPKTEESSQTQKNCGSSMGKLN
 EYRSLESKPEQVCAPNFLHCKDSQQQTVSVSEQSKTSETCSPGNAASEESQTPNCFVTLKSPIKQIAW
 EQKQRFILDMSNFKPEKVKQKRSLS EASIQTKALSQCKNQVSTPSVFGEGQSGLAVLKELLQKRQKAQ
 STNVVQDSTSTHQPKNISVSNEHKKANKRTRPVTSRKPRTPRRTKPEQTPRRLKVDPLNLQTSGLHD
 NSLSDDSPILFSDPGFESCYSLEDSLPEHNYNFDINTIGQTGFCSFYSGSQFVPADQNL POKFLSDAVQ
 DLPFGQAIDKSELLSHDRQSCSEKHHVSDSSPWIRASTLNPELFEKVAMDNENHRHSQWKNFSHPLTS
 HNSIMESFCVQQAENCLTEKSRLNRSSVSKEVFLSLPQANSSDWIQGHNRKEADQSLHSANTSF TTILS
 SPDGELVDAASEDELELYSRNNDVLTPTDSSPRSTSSPLQSKNGSFTPTRTAHILKPLMSPPSREEIVAT
 LLDHDLSEAIYQEPFCSNPSDVPEKPREIGRLLMVETRLPNDLIEFEGDFSLEGLRLWKTAFSAMTQNP
 RPSGSLRNGQAVVNKESNSHKMVEDKKIIVIMPCKYAPSRQLVQAWLQAKEEYERSKCLKTELTPVTKS
 AENVSPSLNPGDTCVAVSPQVDKCPHTLSSSAHTKEEVSKSQIALQTSTTGCSQTLAAASAAPVEEDED
 NDNCYVSYSSPDSPGIPWQQAASPDFRSLNGDRHSSPGKELCSLAVENFLKPIKDG IQKSSCESWEP
 QVISPIHARARTGKWDPLCLHSTPVMQRKFLKLEPEATGLSPLSVEPKTKL YNKKGSDADGLRRVLLTT
 QVENQFAAVNTPKKETSQIDGPSLNNTYGFKVS IQNLQEAALHEIQNLTLISVELHARTRRDLQDPDEF
 DPICALFYCISSDTLPDTEKTELTGVIVIDKDKTVTHQDIRSQTPLLIRSGITGLEVTYAADEKALFQE
 ITNIIKRYDPDILLGYEQMHSWGYLLQRAAALSVDLQMI SRVPDDKIENRFAAERDDYGS DTMSEINI
 VGRITLNLWRIMRNEVALTNYTFENVSFHVLHQRFLFTFRVLSDWFDNKTDLYRWKMVDHYVSRVRGNL
 QMLEQLDLIGKTSEMARLFGIQFLHVLTRGSQYRVESMMLRIAKPMNYIPVTPSIQQRSMRAPQCVPLI
 MEPESRFYSNSVLDVDFQSLYPSIVIAANYCFSTCLGHVENLGKYDEFKFGCTSLRVPPDLLYQIRHDVT
 VSPNGVAFVKPSVRKGVLPRLMEEILKTRLMVKQSMKSYKQDRALSRMLNARQLGLKLIANVTFGYTAAN
 FSGRMPCIEVGDIVHKARETLERAIKLVNDTKKWARVYVYGD TDSMFVLLK GATKEQSFKIGQEI AEAV
 TATNPRPVKLFKFKVYLPCVLQTKRYVGYMYETLDQKEPVF DAKGIETVRRDSCPAVSKILERSLKLFF
 ETRDISLIKQYVQRQCMKLVGKASIQDFIFAKEYRGSFSYRPGACVPALELTRKMLAYDRRSEPRVGER
 VPYVIIYGTPLPLIQLIRRP AEVLQDPTLRNLATYYITKQILPPLARIFSLIGIDVFSWYQELPRIQKA
 TSSSRSELEGRKGTISQYFTTLHCPVCDL TQHGICSKCRSQPHVAIILNQEI RELERKQEQLIKICRN
 CTGSFDRHIPCVSLNCPVLFKLSRVNRELSKAPYLRQLLDQF

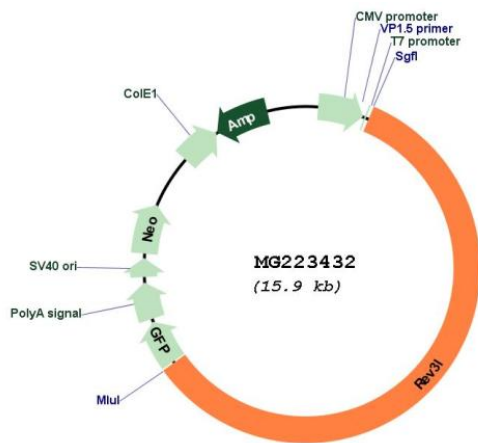
TRTRPLE - GFP Tag - V

Restriction Sites: Sgfl-MluI

Cloning Scheme:



Plasmid Map:



ACCN:

NM_011264

ORF Size:

9366 bp

OTI Disclaimer:

The molecular sequence of this clone aligns with the gene accession number as a point of reference only. However, individual transcript sequences of the same gene can differ through naturally occurring variations (e.g. polymorphisms), each with its own valid existence. This clone is substantially in agreement with the reference, but a complete review of all prevailing variants is recommended prior to use. [More info](#)

OTI Annotation:

This clone was engineered to express the complete ORF with an expression tag. Expression varies depending on the nature of the gene.

Components:

The ORF clone is ion-exchange column purified and shipped in a 2D barcoded Matrix tube containing 10ug of transfection-ready, dried plasmid DNA (reconstitute with 100 ul of water).

Reconstitution Method:

1. Centrifuge at 5,000xg for 5min.
2. Carefully open the tube and add 100ul of sterile water to dissolve the DNA.
3. Close the tube and incubate for 10 minutes at room temperature.
4. Briefly vortex the tube and then do a quick spin (less than 5000xg) to concentrate the liquid at the bottom.
5. Store the suspended plasmid at -20°C. The DNA is stable for at least one year from date of shipping when stored at -20°C.

RefSeq: [NM_011264.3](#), [NP_035394.2](#)

RefSeq Size: 10666 bp

RefSeq ORF: 9369 bp

Locus ID: 19714

UniProt ID: [Q61493](#)

Cytogenetics: 10 B1

Gene Summary: Catalytic subunit of the DNA polymerase zeta complex, an error-prone polymerase specialized in translesion DNA synthesis (TLS). Lacks an intrinsic 3'-5' exonuclease activity and thus has no proofreading function.[UniProtKB/Swiss-Prot Function]