

Product datasheet for **MG223430**

Mamdc2 (NM_174857) Mouse Tagged ORF Clone

Product data:

Product Type:	Expression Plasmids
Product Name:	Mamdc2 (NM_174857) Mouse Tagged ORF Clone
Tag:	TurboGFP
Symbol:	Mamdc2
Synonyms:	1200015L10Rik; AI591564; mamcan
Mammalian Cell Selection:	Neomycin
Vector:	pCMV6-AC-GFP (PS100010)
E. coli Selection:	Ampicillin (100 ug/mL)



[View online »](#)

ORF Nucleotide
Sequence:

>MG223430 representing NM_174857
Red=Cloning site Blue=ORF Green=Tags(s)

TTTTGTAATACGACTCACTATAGGGCGGCCGGAATTCGTCGACTGGATCCGGTACCGAGGAGATCTGCC
GCC**CGGATCGCC**

ATGCTACTAGAAGGGTCTCTGCTGGTAGTGAAGCCTTGACAGCTTGCCAATGCCCTAGACCTGCCCGCTG
GCTCCTGCGCCTTTGAAGAAGACACGTGTGGCTTTGACTCCGTGTTTGCCTTTCGCTTGGATACTAAA
TGAGGAAGGCCATTATGTCTATATGGACACCTCTTTTGCAGGCAAGGGGAGAAAGCTGTCTGCTGAGT
TCTGATTTGCAGGCTGAGGAGTGAAGTGTGGCTGCTACCAGATAAACCACACCTCCGGGATCTG
TGTGAGACCCAGCCAGCTGAACCTCTATGTGAGATTTGAGGATGAGAGCTTCGATCGCTTGGCTT
CACTAAGGAGCCTTCAGACAGCTGGCTCATAGCCAGCCTGGATCTTCAAAACAGCTCCAAGAAATCAAG
ATTTTGATAGAAGGTGCCTGGGACAAGGAAACACGGCTAGCATTGCCCTCTTTGAAATCAAGATGACAG
CCGGCTACTGTATTGAATGTGACTTTGAAGAAAACCATCTCTGTGGCTTTGTGAACCGCTGGAATCCAA
TGTGAAGTGGTTCGTGGGAGGAGAACTGCGAAGAACACCCACTCCATCCTCCACAGGATCACACCTTC
AGGAGTGAACAGCCACTACATGTATGTGGACTCTGTGTATGTCAAGCACTTCCAGGAAGTAGCCAGC
TCATCTCCCCAGTGACCACAGCCTCCATGTCTGGCTGTCTCTCGTTCTATTACCAGCTTCAGCAGGGAA
TGACAATGTCTTCTGTTTACACACGGGACATGGCTGGCCTGTACGAGGAGATTTGAAAGTGGACAGC
CCAGGCAATGCAGCCTGGAACCTTGGGAGGTGGAATTTAGTGCTCCTTACCCCATGGAGGTTATTTTTG
AAGTTGCTTTCAATGGTCCCAAAGGAGGCTACGTTGCCCTGGATGATATTTCTTCTCCTGTTCACTG
CCAAAATCAGACAGGGCTTCTTTCAGTGCTGTGAAACCAGCTGCGATTTTGAAGATAGGCTCTGCAAC
TTTTATCAAGACAAAGAGGGTCCGGTGGACCAGAGTAAGAGTAAAAGCAAACATGTATCGGGCCGGAG
ACCACACGACAGGAACAGGGCACTACCTGCTGGCCAACACTAAGTTTACATCCAGCCTGGCTACATCGG
AAGACTTTATGGTCCCTCTCTCCCTGGAACATGCAGTACTGTGTGCGCTTTCATTACGCCATCTTTGGG
TTTTTGAAAATGAGTGACACCCTAGCCGTTTATATCTTTGAAGAAAACCATGTGGTTCAAGAGAAGATCT
GGTCTGTGCTCGAGTCCCCGAGGGGTGTTGGATGCAAGCGGAAATCAGTTTCAAGAAGCCTATGCCAC
AAAGGTGGTTTTTATGAGCCTGTGCAAAAGCTTTGGGACTGTGGCCTGGTAGCCCTGGATGACATTACC
ATACAAC TAGGAACTGCCGCTCCTCAGCAAGACTTCCACCTCCACCTGGAGAATGCACTTTTGATCAAG
ATGAATGTGCGTTTACACAGGAGAAAAGGAACCGAAGCAGCTGGCACAGGGGAAGGGGAGAAACGCCAC
CTCCTACACAGGACCCAAGGGAGATCACACTACTGGGTAGGTTACTACATGTACATCGAAGCCTCCCAC
ATGGTGTATGGACAGAAAGCACACCTTTTGTCCCAGCCTCTGAGAGGCGTCCCTGGGAAACTGCTTGA
CGTTTTTCTACACATGTACGGAGCAGGGACTGGCCTGCTGAGTGTATTTGAAAAGGGAAGAAGATAG
TGAGGAGTCCCTGTTGTGGAGAAGAAGGGGAGAGCAGAGCATCTCCTGGCTGCGGGCACTGGTTGAATAC
AGCTGCAGGAGGAGACACCAGATAATTTTTGAAGCCACTCGAGGAGTGTCCATAAGAAGTATCGCCA
TTGATGATGTTAACTTCAGGCAGGGCCGTGTGCAGGAATGGAAGATACAACTGAACAGTCATCAGGATA
TTCTGAAGACTTAAATGAAATCGAGTAT

ACGCGTACGCGGCCGCTCGAG - GFP Tag - GTTTAA

Protein Sequence: >MG223430 representing NM_174857
 Red=Cloning site Green=Tags(s)

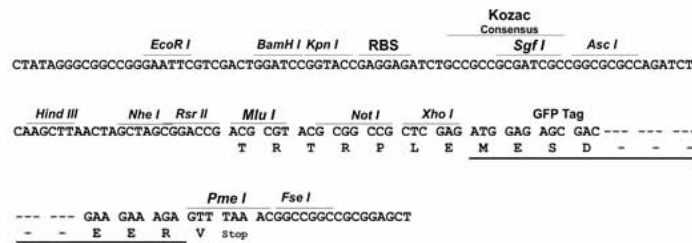
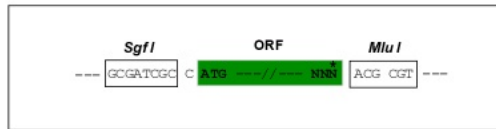
MLLEGVLLVVQALQLANALDLPAGSCAFEEDTCGFDSVFAFLPWILNEEGHYVYMDTSFARQGEKAVLLS
 SDLQAEWNCRLRLVYQITTPPGSVSDPSQLNLVYRFEDESFDRLWSTKEPSDSLIASLDLQNSSKFKF
 ILIEGVLGQGNTASIALFEIKMTAGYCIEDCFEENHLCGFVNRWNPVNVFVGGGTAKNTHSILPQDHTF
 RSEHGHYMYVDSVYVKHFQEVAQLISPVTTASMSGCLSFYYQLQQGNDNVFVSYTRDMAGLYEEIWKVDS
 PGNAAWNLAEEVFSAPYPMEVIFEVAFNGPKGGYVALDDISFSPVHCQNQTGLPFSAVETSCDFEIGLCN
 FYQDKEGPGWTRVRVKANMYRAGDHTTGTGHYLLANTKFTSQPGYIGRLYGPLPKNMQYCVRFHYAIFG
 FLKMSDTLAVYIFEENHVYQEKIWSVLESPRGVWMQAEISFKKPMPTKVVFMCLKSFWDGLVALDDIT
 IQLGNCRSPARLPPPGECTFDQDECAFTQEKRNRSWHRGRGETPTSYTGPKGDHTTGVGYMYIEASH
 MYYGQKAHLLSQPLRGVPGKHCLTFFYHMYGAGTGLLSVYLKREEDSEESLLWRRRGEQSISWLRALVEY
 SCRRRHQIIFEATRGSIRSDIAIDDKLQAGPCAGMEDTTEQSSGYSIDLNEIEY

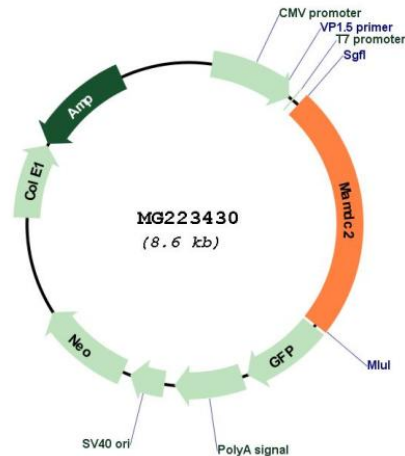
TRTRPLE - GFP Tag - V

Restriction Sites: SgfI-MluI

Cloning Scheme:

Cloning sites used for ORF Shuttling:



Plasmid Map:


ACCN: NM_174857

ORF Size: 2058 bp

OTI Disclaimer: The molecular sequence of this clone aligns with the gene accession number as a point of reference only. However, individual transcript sequences of the same gene can differ through naturally occurring variations (e.g. polymorphisms), each with its own valid existence. This clone is substantially in agreement with the reference, but a complete review of all prevailing variants is recommended prior to use. [More info](#)

OTI Annotation: This clone was engineered to express the complete ORF with an expression tag. Expression varies depending on the nature of the gene.

Components: The ORF clone is ion-exchange column purified and shipped in a 2D barcoded Matrix tube containing 10ug of transfection-ready, dried plasmid DNA (reconstitute with 100 ul of water).

Reconstitution Method:

1. Centrifuge at 5,000xg for 5min.
2. Carefully open the tube and add 100ul of sterile water to dissolve the DNA.
3. Close the tube and incubate for 10 minutes at room temperature.
4. Briefly vortex the tube and then do a quick spin (less than 5000xg) to concentrate the liquid at the bottom.
5. Store the suspended plasmid at -20°C. The DNA is stable for at least one year from date of shipping when stored at -20°C.

RefSeq: [NM_174857.3](#), [NP_777282.1](#)

RefSeq Size: 3338 bp

RefSeq ORF: 2061 bp
Locus ID: 71738
UniProt ID: [Q8CG85](#)
Cytogenetics: 19 B