

Product datasheet for **MG223409**

Fam234a (NM_207217) Mouse Tagged ORF Clone

Product data:

Product Type:	Expression Plasmids
Product Name:	Fam234a (NM_207217) Mouse Tagged ORF Clone
Tag:	TurboGFP
Symbol:	Fam234a
Synonyms:	Itfg3
Mammalian Cell Selection:	Neomycin
Vector:	pCMV6-AC-GFP (PS100010)
E. coli Selection:	Ampicillin (100 ug/mL)



[View online »](#)

ORF Nucleotide Sequence:

>MG223409 representing NM_207217
 Red=Cloning site Blue=ORF Green=Tags(s)

TTTTGTAATACGACTCACTATAGGGCGGCCGGGAATTCGTCGACTGGATCCGGTACCGAGGAGATCTGCC
 GCC**GCGATCGCC**

ATGATGGACAACAAGGACTTAGAAGCTGAAATACACCCCTGAAGAATGAGGACAAGAAATCACAGGAAA
 ACCCAGGAAACCTACCAAGAAACGAAGATAACTTGAAGAGCAAGCCTGTGCCTTCCCGCTTGTCCCGGTG
 CCGCACAGTGGCATTTCCTTTCCCTGTTACCTGCCTCTTCGTGGTGTGGTCTGTCTTTCATCATC
 CCATGTCCAGACCGTCCCTCCTCACAGGCACGTGGAAGCTTGACTACAACAATGCAGTCATGTACGACT
 TCCTGGCTCTGGGAGACATAAACAGGACAAGGTTCAGGACGTTCTTTTCTTTACAAAAATACCAACAG
 CAGTAACAATCTCACCAGATCCTGTGCTGATGAAGGCTTTTCCACTCCTTGTGCCTTTGTGGTTGCGGTG
 TCAGGAGCCAATGGCAGCGTCTCTGGGAGAGACCCGTGGCCCAAGATGTCGCCCTGTAAAGTGTGCCA
 TGCCACAGACACTGGACAGTGACGAGGTGCTTCTGCCTGTATCGTTGTGGGAAGAGCTGGTTCTTCGT
 TGCGGTACAGCTTTTTACAGGAGAAACCCTGTGGAGCCATCCAGCAGCTTTAGTGGGAAGCTTTCCATC
 CTGAGCCCTCTGCTCCAGGTGCCTGACATTGATGGTGATGGTGACGGTACTCCAGACCTCCTGATCCTCG
 CCCAGGAGGGACAGGAGGTCACTGGAGCTCTATTACAGGTAGCACTGGGTACCAGATTGCCACAGAGG
 CAGCCTTGGTGTGGATGGAGATGGTGTCCGCTCCTTCATGTGACCAGAACTGGTGTCTAGTATATTCTC
 CTGCCCTGTGCAAGTGCCTCTGTGGCTTCTCTGTGAAGAGTCTCTATGAGAGAATTACTGGGCGAGATG
 GCCATTTAAGGAAGACCCCTACTGGGAGAACATGCTCAATCACTCTGTCCACAGGAGGCTTCTGCACAG
 ACTTGGAGCAGTTCGCTACCTGATGAATATCCAGGAAAAGCTGGCCAGGACTTGCTCCTGTGACCTCT
 GAGGCCCTGCGTGTGTGGATGGACAGGATCTGGAGCCAGGTGGACCCTTGGTGAAGTTCAGGTTCTGA
 AAAACCTATCCTTGGCCACTACAAACCTGCACACCTGGCTGTGGTCATTGAGAATGGAACCAGCATTGA
 TAGACAGATCCTACTTCTGGACCTCAGTACTGGGTCTATCCTGTGGAGCCAGCCCTCCCAAGCCTGCCT
 GGGGGCCACCATCCACAAGCCTGATGACTGCAGACCACCGCTCAGCCTTCTTCTTCTGGGGCTCCATG
 ATCTTGTGAGCACTAATGAGATGGATCCCCGGATGTGCAGCACAGTCTGTATATGTTCCACCCGACCT
 GCCTGGCATCCTGCTGGAGCTAGCCAACGTGTCTGCCAACATCGTGGCCTTTGATGCCGTCTGCTGAG
 CCAAGCCGCCATGCTGCCTATGTGCTCTGACGGGCCAGCAAGCTCAGATGTGCTGGCCTGGTCTCTG
 TCACCAAAACAAAGTGAAGACCTTGTCCAGGCAGTAGAGTATCCACTTGGGTGAAGGCAGCTCAGA
 CAGCGACCAGGCTATCCGGGACCGTTCTCCCGACTACGGTACCGGAGTGAGATG

ACGCGTACGCGGCCGCTCGAG – GFP Tag – GTTTAA

Protein Sequence:

>MG223409 representing NM_207217
 Red=Cloning site Green=Tags(s)

MMDNKDLEAEIHPLKNEKKSQENPGNLPNEDNLKSKPVPSRLSRCRTVAFFLSLFTCLFVVFVLSFII
 PCPDRPSSQGTWKLDYNNAVMYDFLALGDINKDKVQDVLFLYKNTNSSNNLTRSCADEGFSTPCAFVVAV
 SGANGSVLWERPVAQDVALVKCAMPQTLDSDEVSSACIVVGRAGSFVAVSFFTGETLWSHPSSFSGNVSI
 LSPLLQVPDIDGDGDPDLLILAQEGQEVSGALYSGSTGYQIGHRGS LGVDGDVALLHVTRTGAQYIL
 LPCASALCGFSVKSLYERITGRDGHFKEDPYWENMLNHSVHRRLLHRLGAVRYLMNIPGKAGQDLLLVTS
 EACVLLDQDLEPRWTLGEVQVLRKPIILGHYKPTLAVVIENGTSIDRQILLDLSTGSILWSQPLPSLP
 GGPPSTSLMTADHRSAFFWGLHDLVSTNEMDPPDVQHSLYMFHPTLPGILLELANVSANIVAFDAVLLE
 PSRHAAYVLLTGPASSDVPGLVSVTKHKVQDLVPGSRVIHLGEGSSDSQAIRDRFSRLRYRSEM

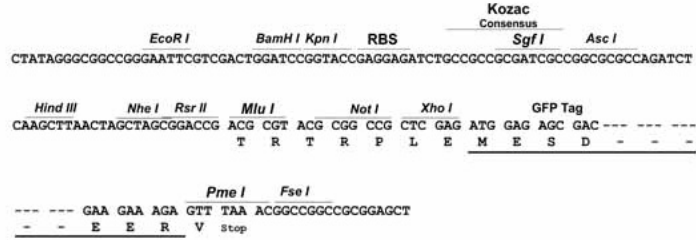
TRTRPLE – GFP Tag – V

Restriction Sites:

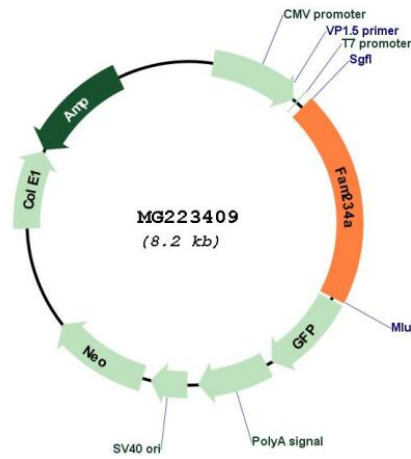
Sgfl-MluI

Cloning Scheme:

Cloning sites used for ORF Shutting:



Plasmid Map:



ACCN:	NM_207217
ORF Size:	1665 bp
OTI Disclaimer:	The molecular sequence of this clone aligns with the gene accession number as a point of reference only. However, individual transcript sequences of the same gene can differ through naturally occurring variations (e.g. polymorphisms), each with its own valid existence. This clone is substantially in agreement with the reference, but a complete review of all prevailing variants is recommended prior to use. More info
OTI Annotation:	This clone was engineered to express the complete ORF with an expression tag. Expression varies depending on the nature of the gene.
Components:	The ORF clone is ion-exchange column purified and shipped in a 2D barcoded Matrix tube containing 10ug of transfection-ready, dried plasmid DNA (reconstitute with 100 ul of water).
Reconstitution Method:	<ol style="list-style-type: none">1. Centrifuge at 5,000xg for 5min.2. Carefully open the tube and add 100ul of sterile water to dissolve the DNA.3. Close the tube and incubate for 10 minutes at room temperature.4. Briefly vortex the tube and then do a quick spin (less than 5000xg) to concentrate the liquid at the bottom.5. Store the suspended plasmid at -20°C. The DNA is stable for at least one year from date of shipping when stored at -20°C.
RefSeq:	NM_207217.4 , NP_997100.1
RefSeq Size:	2751 bp
RefSeq ORF:	1668 bp
Locus ID:	106581
UniProt ID:	Q8C0Z1
Cytogenetics:	17 A3.3