

Product datasheet for **MG223391**

Jph3 (NM_020605) Mouse Tagged ORF Clone

Product data:

Product Type:	Expression Plasmids
Product Name:	Jph3 (NM_020605) Mouse Tagged ORF Clone
Tag:	TurboGFP
Symbol:	Jph3
Synonyms:	JP-3; Jp3
Mammalian Cell Selection:	Neomycin
Vector:	pCMV6-AC-GFP (PS100010)
E. coli Selection:	Ampicillin (100 ug/mL)



[View online »](#)

ORF Nucleotide
Sequence:

>MG223391 representing NM_020605
Red=Cloning site Blue=ORF Green=Tags(s)

TTTTGTAATACGACTCACTATAGGGCGGCCGGGAATTCGTCGACTGGATCCGGTACCGAGGAGATCTGCC
GCC**CGGATCGCC**

ATGTCCAGTGGGGTAGGTTTAATTTTACGATGGAGGTCCTACTGCGGAGGCTGGGAGGACGGCAAGG
CGCACGGCCATGGCGTCTGCACCGGCCGAAGGGCCAGGGCGAATACACCGGCTCGTGGAGCCACGGCTT
TGAGGTGCTGGGCGTCTACACCTGGCCAAGCGGCAACACGTACCAAGGCACCTGGGCGCAGGGCAAGCGC
CACGGCATCGGCCTGGAGAGCAAGGGGAAGTGGGTGTACAAGGGCGAGTGGACGCACGGATTTAAGGGGC
GCTACGGGTGCGGGAGTGCACGGGCAACGGAGCCAAATACGAAGGGACCTGGAGCAACGGACTGCAGGA
TGGCTACGGCACGGAGACCTACTCGGATGGAGGAACGTATCAGGGCCAATGGGTTGGTGGCATGCGCCAG
GGCTACGGTGTGCGGCAGAGTGTCCCTTATGGCATGGCCGCAGTCATCCGTTCCGCCCTGAGGACCTCCA
TCAACTCCCTGCGCAGCGAGCACACCAACGGGGCGGCACTGCACCCGGACGCCTCCCGGCAGTGGCCGG
CAGTCCGGCCGTGTCCCGTGGTGGCTTCGTGCTGGTGGCCACAGTGACTCGGAGATCCTCAAGAGCAAG
AAGAAGGGACTGTTCCGGCGCTCGCTGCTGAGCGGCCTGAAGCTACGCAAGTCTGAGTCCAAGAGCAGCC
TGCCAGCCAGCGCAGCAAGCAGAGCTCCTCCGAGCGAGGCCGGGAATGAGCACCGTGAGCTCCACGGC
CAGCGACATCCACTCCACCATCAGCCTGGGCGAGGCCGAGGCTGAGCTGGCGGTCAATTGAGGACGACATC
GACGCCACTACCACCGAGACCTACGTGGGTGAATGGAAGAACGACAAACGCTCGGGCTTCGGTGTGAGCC
AGCGCTCGGACGGGCTTAAGTATGAGGGCGAGTGGGTGAGCAACCGCCGGCATGGGTACGGGTGCATGAC
TTTCCCGACGGCACCAAGGAGGAGGGGAAGTACAAGCAGAACGTGCTCGTGAGCGGCAACGCAAGAAT
CTCATCCCGCTGCGTGCCAGCAAGATCCGGGAGAAGGTGGACCGGGCCGTGGAGGCAGCCGAGAGGGCGG
CCACCATCGCCAAGCAGAAAGCCGAGATCGTGCCTCCAGGACCTCCCACTCAGGGCCAAGGCTGAGGC
AGCACTTACTGCGGCTCAGAAAGCCAGGAGGAAGCGCGGATCGCCAGGATCACTGCCAAAGAGTTCTCT
CCCTCCTTCCAGCACAGGAAAACGGGCTTGTGAGTACCAGAGGCCAAAGCACAGATGTCTGCGATGATA
TCGAGGTGCTCTCACCGGGACACCCCTACAGCAGGAGAGCCCGAGCTGTACCGAAAGGGCACCCCC
TTCTGATCTGACCCCTGACGACAGTCCCTGCAGAGCTTCCCGCCAGCCACATCTACCCCTCCGCCA
GCTCCTGCCTCCAGGACCAAGATGGCCACTTCTCCAGGCAGGTCTCCGTGGACGAGGAGCGAAGCGGGG
ACATCCAGATGCTCCTCGAGGGCCGCGGAGGGGACTATGCCCGCAACAGCTGGGGCGAGGAGAAGGCTGG
GGCCTTAGGGGTATCCGCAGCGGTGCCCTACGCAGCGGCCAGCCACTGAGGACTTCCGCACCCGGGGC
TCAGGCCACAAGCAGCCTGGGAACCCAAAGCCCGGGAGCGGCGGACGGAGTCCCCACCCAGTTTTCAT
GGACTTCCACCACCGGGCAGGCAATCCCTGTTCTGGGGGCCCAAGCTGCTAGAGCCAGATGAGGAGCA
GCTGAGCAACTACAAGCTGGAGATGAAGCCCTTACTGAGGATGGATGCCTGTCCACAGGATACGCACCCA
CAGAGACGGCGTCATAGCCGGGGTGTGGGGGGGACAGGGGCTTCGGGCTACAGAGACTGAGGTCCAAGT
CCCAAAACAAGGAGAACCTTAGGCCAGCCTCCTCTGCAGAACCCAGGTGCAGAACTCGAGAGCCTGCG
GCTGGGGGACCGGCCGAGCCCGTCTGCTGCGTTGGGACCTGACCTTCTCCCCACCCAGAAAGTCCCTG
CCTGTTGACTCGAGTCTGACGAGGAGACTGGAGATGAGCTCAAGTCCAGCACGGGCTCAGTCCCATCT
TGGTCGTCATGGTGATCCTGTCAACATTGGAGTCGCCATTTTGTATTAACTTTTTCATC

ACGCGTACGCGGCCGCTCGAG - GFP Tag - GTTTAA

Protein Sequence: >MG223391 representing NM_020605
 Red=Cloning site Green=Tags(s)

```
MSSGGRFNFDDGGSYCGGWEDGKAHGHGVCCTGPKGQGEYTGWSHGFVFLGVYTWPSGNTYQGTWAQGKR
HGIGLESKGGKVVYKGEWTHGFKGRYGVRECTGNGAKYEGTWSNGLQDGYGTETYSDDGTYQGQWVGGMRQ
GYGVRQSVPYGMAAVIRSPLRTSINSLRSEHTNGAALHPDASP AVAGSPAVSRGGFVLVAHSDSEILKSK
KKGLFRRSLLSGLKLRKSEKSSLASQRSKQSSFRSEAGMSTVSSSTASDIHSTISLGEAEELAVIEDDI
DATTTEYVYGEWKNDKRSFGVSRSDGLKYEGEWVSNRRRHGYGCMTFPDGTKEEGKYKQNVLVSGKRKN
LIPLRASKIREKVDRAVEAAERAATIAKQKAEIAASRTSHSRAKAEAL TAAQKAQEEARIARITAKEFS
PSFQHRENGLEYQRPKHQMSCDDIEVLSTGTPLQQESPELYRKGTTPSDLTPDSDPLQSFSPASPTSTPPP
APASRTKMAHFSRQVSVDEERSGDIQMLLEGRGGDYARNSWGEEKAGASRGIRSGALRSGQPTEDFRTRG
SGHKQPGNPKPRERRTESPTTFSWTSHHRAGNPCSGGPKLLEPDEEQLSNYKLEMKPLLRMDACPQDTHP
QRRRHSRAGGDRGFLQRLRSKQNKENLRPASSAEPTVQKLESLRLGDRPEPRLLRWDLTFSPQKSL
PVALESDEETGDELKSSGAPILVVMVILLNIGVAILFINFFI
```

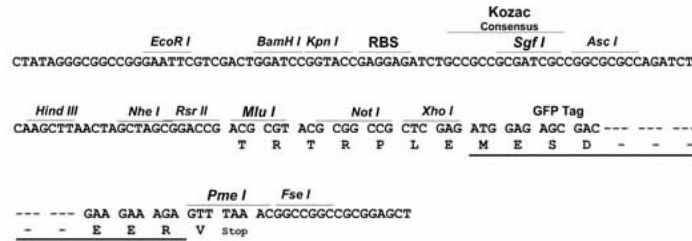
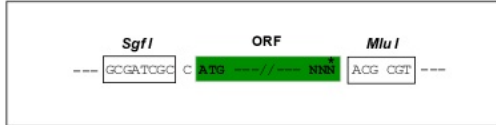
TRTRPLE - GFP Tag - V

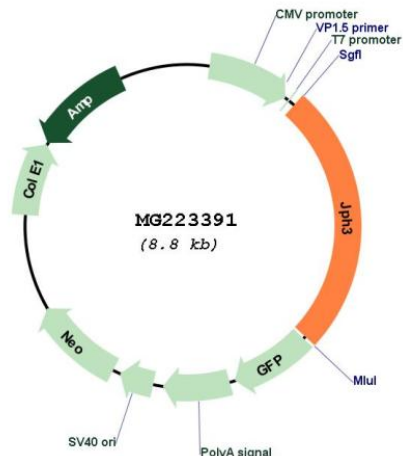
Restriction Sites:

SgfI-MluI

Cloning Scheme:

Cloning sites used for ORF Shutting:



Plasmid Map:


ACCN: NM_020605

ORF Size: 2232 bp

OTI Disclaimer: The molecular sequence of this clone aligns with the gene accession number as a point of reference only. However, individual transcript sequences of the same gene can differ through naturally occurring variations (e.g. polymorphisms), each with its own valid existence. This clone is substantially in agreement with the reference, but a complete review of all prevailing variants is recommended prior to use. [More info](#)

OTI Annotation: This clone was engineered to express the complete ORF with an expression tag. Expression varies depending on the nature of the gene.

Components: The ORF clone is ion-exchange column purified and shipped in a 2D barcoded Matrix tube containing 10ug of transfection-ready, dried plasmid DNA (reconstitute with 100 ul of water).

Reconstitution Method:

1. Centrifuge at 5,000xg for 5min.
2. Carefully open the tube and add 100ul of sterile water to dissolve the DNA.
3. Close the tube and incubate for 10 minutes at room temperature.
4. Briefly vortex the tube and then do a quick spin (less than 5000xg) to concentrate the liquid at the bottom.
5. Store the suspended plasmid at -20°C. The DNA is stable for at least one year from date of shipping when stored at -20°C.

RefSeq: [NM_020605.3](#), [NP_065630.1](#)

RefSeq Size: 3903 bp

RefSeq ORF: 2235 bp

Locus ID: 57340

UniProt ID: [Q9ET77](#)

Cytogenetics: 8 E1

Gene Summary: Junctophilins contribute to the formation of junctional membrane complexes (JMCs) which link the plasma membrane with the endoplasmic or sarcoplasmic reticulum in excitable cells. Provides a structural foundation for functional cross-talk between the cell surface and intracellular calcium release channels. JPH3 is brain-specific and appears to have an active role in certain neurons involved in motor coordination and memory.[UniProtKB/Swiss-Prot Function]