

Product datasheet for **MG223379**

Dok5 (NM_001163686) Mouse Tagged ORF Clone

Product data:

Product Type:	Expression Plasmids
Product Name:	Dok5 (NM_001163686) Mouse Tagged ORF Clone
Tag:	TurboGFP
Symbol:	Dok5
Synonyms:	2700055C10Rik
Mammalian Cell Selection:	Neomycin
Vector:	pCMV6-AC-GFP (PS100010)
E. coli Selection:	Ampicillin (100 ug/mL)
ORF Nucleotide Sequence:	>MG223379 representing NM_001163686 Red=Cloning site Blue=ORF Green=Tags(s)

TTTTGTAATACGACTCACTATAGGGCGCCGGGAATTCGTCGACTGGATCCGGTACCGAGGAGATCTGCC
GCC**CGATCGCC**

ATGGCTTCCAATTTTAAATGACATAGTGAAGCAGGGGTACGTGAGGATCCGGAGCAGACGCCTAGGGATTT
ATCAACGATGCTGGTTAGTGTTCAAGAAAGCTTCGAGCAAGGGTCAAAGAGACTGGAGAAGTTCTCAGA
TGAACGGGCCGCTACTTCAGGTGTTACCACAAGGTTACAGAACTCAACAATGTGAAAAATGTAGCCCGA
TTGCCAAAGAGCACCAAGAAACATGCTATAGGGATTTATTTCAATGATGACACCTCGAAGACCTTTGCCT
GTGAATCAGATCTTGAGGCAGACGAATGGTGCAAAGTTCTCCAGATGGAGTGTGTGGGGACCAGAATCAA
TGACATCAGCCTCGGAGAGCCTGATTTATTGGCTACCGGGGTGGAACCGAGCAGAGCGAGAGGTTCAAT
GTGATTTTGATGCCATCTCCTAACTTAGATGTACATGGCGAATGTGCCTTGCGGATTACATATGAGTACA
TCTGTCTTTGGGACGTCCAGAATCCCAGAGTTAAACTCATCTCTTGGCCGCTAAGTGCCTGCGCGGTTA
TGGACGAGACACCACGTGGTTCACTTTTGAGGCAGGGAGGATGTGTGAGACTGGCGAAGGGTTATTTATT
TTTCAAACACGAGACGGAGAGGCCATCTACCAGAAGGTCCACTCTGCTGCCTTGGCCATAGCTGAGCAGC
ATGAACGGCTGCTGCAGAGCGTGAAAAATTCATGATGAAGAAGAGCGAGCGGGCAGCGTCTGCTGAGCAC
CGTGGTGCCCTGCCCGCAGCGCCTACTGGCAGCATATCACGAGGCAGCACAGCACAGGACAGCTGTAC
CACCTTCAAGATGTCACCAGCCCGCTGAAGCTTCACCGACAGAGACTTCCCCACCTACCGTCTGAGC
AC

ACGCGTACGCGGCCGCTCGAG - GFP Tag - GTTTAA



[View online »](#)

Protein Sequence: >MG223379 representing NM_001163686
 Red=Cloning site Green=Tags(s)

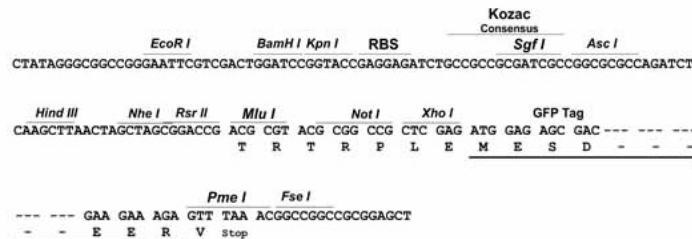
MASNFNDIVKQGYVIRSRRLGIYQRCWLVFKKASSKGPKRLEKFSDERAAYFRCYHKVTELENNVKNVAR
 LPKSTKKHAIGIYFNDDTSKTFACESDLEADWCKVLQMECVGTRINDISLGEPELLATGVEREQSERFN
 VYLMPSPLNDVHGECALRITYEYICLDWDVQNPVKLISWPLSALRRYGRDITWFTEAGRMCEGGLFI
 FQTRDGEAIYQKVHSAALIAEQHERLLQSVKNSMMKKSERAASLSTVVPLPRSAWQHITRQHSTGQLY
 HLQDVTSPKLRHRTETFPYRSEH

TRTRPLE - GFP Tag - V

Restriction Sites: SgfI-MluI

Cloning Scheme:

Cloning sites used for ORF Shuttling:



ACCN: NM_001163686

ORF Size: 912 bp

OTI Disclaimer: The molecular sequence of this clone aligns with the gene accession number as a point of reference only. However, individual transcript sequences of the same gene can differ through naturally occurring variations (e.g. polymorphisms), each with its own valid existence. This clone is substantially in agreement with the reference, but a complete review of all prevailing variants is recommended prior to use. [More info](#)

OTI Annotation: This clone was engineered to express the complete ORF with an expression tag. Expression varies depending on the nature of the gene.

Components: The ORF clone is ion-exchange column purified and shipped in a 2D barcoded Matrix tube containing 10ug of transfection-ready, dried plasmid DNA (reconstitute with 100 ul of water).

Reconstitution Method:

1. Centrifuge at 5,000xg for 5min.
2. Carefully open the tube and add 100ul of sterile water to dissolve the DNA.
3. Close the tube and incubate for 10 minutes at room temperature.
4. Briefly vortex the tube and then do a quick spin (less than 5000xg) to concentrate the liquid at the bottom.
5. Store the suspended plasmid at -20°C. The DNA is stable for at least one year from date of shipping when stored at -20°C.

RefSeq: [NM_001163686.1](#), [NP_001157158.1](#)

RefSeq Size: 1768 bp

RefSeq ORF: 915 bp

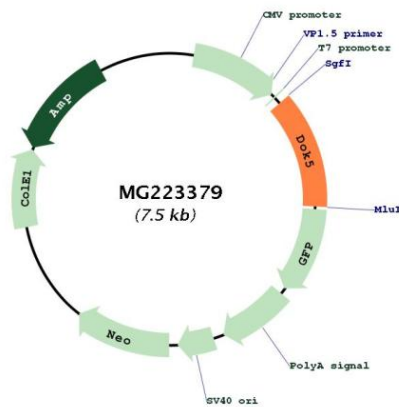
Locus ID: 76829

UniProt ID: [Q91ZM9](#)

Cytogenetics: 2 92.26 cM

Gene Summary: DOK proteins are enzymatically inert adaptor or scaffolding proteins. They provide a docking platform for the assembly of multimolecular signaling complexes. DOK5 functions in RET-mediated neurite outgrowth and plays a positive role in activation of the MAP kinase pathway. Putative link with downstream effectors of RET in neuronal differentiation. [UniProtKB/Swiss-Prot Function]

Product images:



Circular map for MG223379