

Product datasheet for **MG223360**

Sept9 (NM_001113487) Mouse Tagged ORF Clone

Product data:

| | |
|---------------------------|---|
| Product Type: | Expression Plasmids |
| Product Name: | Sept9 (NM_001113487) Mouse Tagged ORF Clone |
| Tag: | TurboGFP |
| Symbol: | Sept9 |
| Synonyms: | Msf; MSF1; PNUTL4; Sint1 |
| Mammalian Cell Selection: | Neomycin |
| Vector: | pCMV6-AC-GFP (PS100010) |
| E. coli Selection: | Ampicillin (100 ug/mL) |



[View online »](#)

ORF Nucleotide Sequence:

>MG223360 representing NM_001113487
 Red=Cloning site Blue=ORF Green=Tags(s)

TTTTGTAATACGACTCACTATAGGGCGGCCGGAATTCGTCGACTGGATCCGGTACCGAGGAGATCTGCC
 GCC**CGCATCGCC**

ATGTCGACCCCGCGGTCAACGCACAGCTGGACGGATCATTTTCAGACTTTGAAGCCTTAAGAGATCGT
 TTGAAGTCGAGGAGATTGAGCCGCCAACTCCAGGCCACCCGGAGGGTCCAGACCCTCTGCTCCGCGC
 CACGGTGGCCAGCTCCAGCCAGAAATCCAGGACCTGGGGTGAAGAACTCAGAGCCCGCTGCCCGCCTT
 GTAGACTCCCTGAGCCAGCGCTCCCCAAGCCTCCCTGCGGAGGGTGGAGCTGGCGGGAGCCAAGGCGC
 CTGAGCCCATGTCTCGACGCACAGAGATCTCCATCGACATCTCTCCAAGCAGGTGGAGACACGGCCTC
 CGCTGCCGGGCCCTCACGGTTCGGCCTAAGAGGGCTGAAGTCTGGGCCACAAGACCCAGAGCCTGTC
 CCTCGGAGGACGGAGATCACCATTGTCAAGCCTCAGGAGTCAGTCTCCGAGGGTGGAGACCCCTGCCT
 CCAAGATCCCGAGGGCTCTGCCGTGCCACAGATGCAGCCCCAAGAGGGTAGAGATCCAGGTGCC
 CAAGCCAGCTGAGCACCAACTGTCCGCTCCCGTCCAGACCCTGGAGAACTCCGAGGCCCGGATGTCT
 CAACTGCAGAGCAGGCTGGAGCCAGGCCCTCCGTGGCTGAGGTCCCATATCGGAACAGGAAGACTCCG
 AGGTGACTCCCAGCTGTGTTGGCGACATGGCTGACAACCCTAGAGATGCCATGCTCAAGCAGGCCCCCGC
 GTCACGGAACGAAAAGGCCCCCATGGAGTTCGGCTATGTGGGGATCGACTCCATCCTGGAGCAGATGCGC
 AGGAAGGCTATGAAACAGGGCTTCGAGTTAACATCATGGTGGTTGGGCAGAGCGGCCTCGGAAGTCCA
 CTTTAATCAATACCCTCTCAAGTCCAAATCAGCCGGAAGTCCGTGCAGCCACCTCGGAGGAACGCAT
 CCCCAGACGATCGAAATCAAGTCGATCACCCACGATATTGAAGAGAAGGGGTTCAATGAAGTGA
 GTGATTGACACGCCGGGCTTCGGAGACCACATCAACAATGAGAAGTCTGGCAGCCATTATGAAGTCA
 TCAATGACCAATATGAGAAGTACCTGCAGGAGGAAGTCAACATCAACCGGAAGAAGCGCATCCCGAC
 CCGTGTCCACTGCTGCCTCTACTTCATCCAGCCACCGGCCACTCGCTCAGGCCCTGGACATTGAATTC
 ATGAAGCGCCTAAGCAAAGTGGTGAACATTGTCCAGTCATCGCCAAGGCTGACACGCTGACCCCTGGAGG
 AGAGGGTCTACTTCAAACAGCGGATCACTGCAGACCTGCTGTCCAACGGCATTGACGTGTACCCGCAGAA
 GGAGTTTGTGAGGACGCAGAAGACCGGCTGGTGAACGAAAAGTTCGGGAGATGATCCCATTTGCTGTG
 GTGGGCAGCGACCATGAGTATCAAGTCAATGGCAAGAGGATTCTGGGAAGGAAGACCAAGTGGGGCACTA
 TCGAAGTTGAGAATACCACTCACTGTGAATTTGCTTACCTGCGGGATCTCCTTATCAGGACGCACATGCA
 AAACATCAAAGACATCACCAGCAACATCCACTTGAAGCCTACCGAGTGAACGCCTCAACGAGGGCAAC
 AGCGCCATGGCCAACGGGATCGAGAAGGAGCCGGAAGCCAGGAGATG

ACGCGTACGCGGCCGCTCGAG – GFP Tag – GTTTAA

Protein Sequence:

>MG223360 representing NM_001113487
 Red=Cloning site Green=Tags(s)

MSDPAVNAQLDGIISDFEALKRSFEVEEIEPPNSTPPRRVQTPLLRATVASSSQKFQDLGVKNSEPAARL
 VDSL SQRSPKPSLRRVELAGAKAPEPMSRRTEISIDISSKQVESTASAAGPSRFLKRAEVLGHKTPEPV
 PRRTEITIVKPQESVLRVETPASKIPEGSVPATDAAPKRVEIQVPKPAEAPNCLPSQTLNENAPMS
 QLQSRLEPRPSVAEVPYRNQEDSEVTPSCVGMADNPRDAMLKQAPASRNEKAPMEFGYVGIDSILEQMR
 RKAMKQGFENIMVVGQSLGKSTLINTLFSKISRKSVQPTSEERIPKTIKSIKTHDIEEKGVKMLT
 VIDTPGFDHINNENCWQPIMKFINDQYKYLQEEVNINRKKRIPDTRVHCLYFIPATGHSLRPLDIEF
 MKRLSKVVNIIVPIAKADTLLEERVYFKQRITADLLSNGIDVYPQKFEDEDAEDRLVNEKFREMIPFAV
 VGS DHEYQVNGKRILGRKTKWGTIEVENTHCEFAYLRLDLLIRTHMQNIKDITSNIHFEAYRVKRLNEGN
 SAMANGIEKEPEAQEM

TRTRPLE – GFP Tag – V

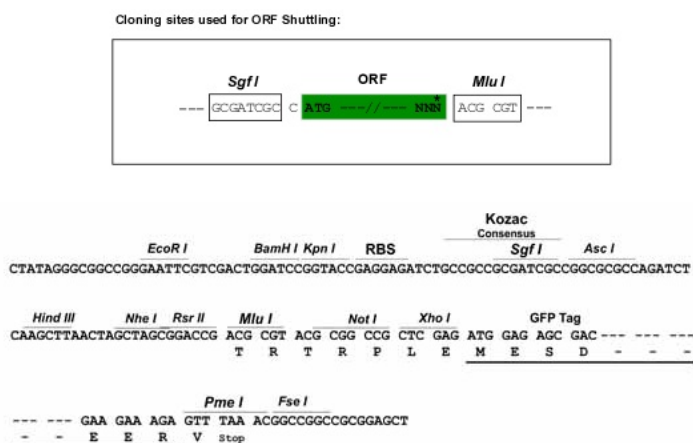
Chromatograms:

https://cdn.origene.com/chromatograms/ja2236_d05.zip

Restriction Sites:

Sgfl-Mlul

Cloning Scheme:



ACCN: NM_001113487

ORF Size: 1728 bp

OTI Disclaimer: Due to the inherent nature of this plasmid, standard methods to replicate additional amounts of DNA in E. coli are highly likely to result in mutations and/or rearrangements. Therefore, OriGene does not guarantee the capability to replicate this plasmid DNA. Additional amounts of DNA can be purchased from OriGene with batch-specific, full-sequence verification at a reduced cost. Please contact our customer care team at custsupport@origene.com or by calling 301.340.3188 option 3 for pricing and delivery.

The molecular sequence of this clone aligns with the gene accession number as a point of reference only. However, individual transcript sequences of the same gene can differ through naturally occurring variations (e.g. polymorphisms), each with its own valid existence. This clone is substantially in agreement with the reference, but a complete review of all prevailing variants is recommended prior to use. [More info](#)

OTI Annotation: This clone was engineered to express the complete ORF with an expression tag. Expression varies depending on the nature of the gene.

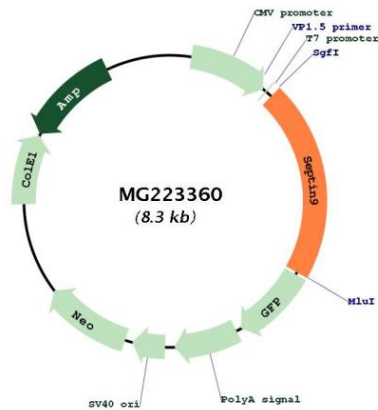
Components: The ORF clone is ion-exchange column purified and shipped in a 2D barcoded Matrix tube containing 10ug of transfection-ready, dried plasmid DNA (reconstitute with 100 ul of water).

Reconstitution Method:

1. Centrifuge at 5,000xg for 5min.
2. Carefully open the tube and add 100ul of sterile water to dissolve the DNA.
3. Close the tube and incubate for 10 minutes at room temperature.
4. Briefly vortex the tube and then do a quick spin (less than 5000xg) to concentrate the liquid at the bottom.
5. Store the suspended plasmid at -20°C. The DNA is stable for at least one year from date of shipping when stored at -20°C.

RefSeq: [NM_001113487.1](#), [NP_001106959.1](#)
 RefSeq Size: 3796 bp
 RefSeq ORF: 1731 bp
 Locus ID: 53860
 UniProt ID: [Q80UG5](#)
 Cytogenetics: 11 82.61 cM
 Gene Summary: Filament-forming cytoskeletal GTPase (By similarity). May play a role in cytokinesis (Potential). [UniProtKB/Swiss-Prot Function]

Product images:



Circular map for MG223360