

Product datasheet for **MG223345**

Brd3 (NM_023336) Mouse Tagged ORF Clone

Product data:

| | |
|---------------------------|--|
| Product Type: | Expression Plasmids |
| Product Name: | Brd3 (NM_023336) Mouse Tagged ORF Clone |
| Tag: | TurboGFP |
| Symbol: | Brd3 |
| Synonyms: | 2410084F24Rik; AW060456; Fsrg2; ORFX; RINGL3 |
| Mammalian Cell Selection: | Neomycin |
| Vector: | pCMV6-AC-GFP (PS100010) |
| E. coli Selection: | Ampicillin (100 ug/mL) |



[View online »](#)

ORF Nucleotide
Sequence:

>MG223345 representing NM_023336
Red=Cloning site Blue=ORF Green=Tags(s)

TTTTGTAATACGACTCACTATAGGGCGGCCGGGAATTCGTCGACTGGATCCGGTACCGAGGAGATCTGCC
GCC**CGCATCGCC**

ATGTCCACTACAGCGGCTGCCCCACGGGGATCCCGGCAGTCCCGGGCCCGTGAACCTCCCCACCTG
AGGTCTCCAACCCAGCAAGCCCGGCGAAAGACTAACCAACTGCAGTACATGCAGAATGTAGTGGTGAA
GACACTCTGGAACATCAGTTTGCTGGCCTTTCTACCAGCCTGTGGATGCAATCAAGCTGAACCTGCCT
GATTATCATAAAAATAAAAAAACCAATGGACATGGGGACTATCAAGAAGAGACTAGAAAAAATTATT
ATTGGAGTGCCAGTGAGTGTATGCAGGACTTCAACACCATGTTTACAACTGTTATTTATAAAGCC
CACAGATGATATAGTGCTAATGGCCAGGCCTTAGAGAAAATCTTTCTGCAGAAAGTGGCCAGATGCCT
CAGGAGGAAGTTGAACTATTGCCCTGCTCAAAGGGCAAAGGCCGGAAGCCAGCTGCAGGAGCCAAA
ATGCAGGTTCCCAACAAGTGGCAGCTGTGTCTTCGGTCTCCCAGCAACCCCTTCCAGAACATACCCCC
CACCGTGTCCAGACACCCGTCATTGCCGCCACCCCTGTACCAACCATCACTGCAACAGTCACTGAGTT
CCAGTCCCCCACCCACTGCACCGCCTCCTCCTGCGACACCCATCGTCCCTGTGGTCCCTCCCACACCGC
CTGTAGTCAAGAAAAAGGGCGTGAAGCGGAAAGCAGACACAACCACCCACAACATCTGCCATCACTGC
CAGCCGGAGTGAGTCTCCCCGCCACTTTCAGAGCCCAAGCAAGCAAGGTAGTGGCCCGAAGGGAGAGC
GGGGGCCGCCCATCAAACCTCCCAAGAAGGACCTGGAAGATGGTGGAGTCCCACAGCACGCGGGTAAAA
AGGGAAAAGTGTCCGAGCACCTGCGGCACTGTGACAGCATCTCCGGGAGATGCTGTCCAAGAAGCATGC
TGCTATGCGTGGCCCTTTACAAGCCAGTGGACGCGGAGGCGCTGGAGCTGCATGACTACCATGACATC
ATCAAGCACCCCATGGACCTCAGCACGGTCAAAGGAAGATGGATAGCCGAGAGTACCCAGATGCACAGG
GCTTTGCTGCTGATATCCGGTTAATGTTCTCGAATTGTTATAAGTACAACCTCCAGACCAAGTGGT
GGCCATGGCCAGGAAGCTCCAGGATGTGTTTGGATGAGGTTTGCCAAGATGCCCGATGAGCCCATGGAG
GCACCTGCGCTGCCCGCTCCCACGGCCCCATCGTGAGCAAGGGGGCTGAGAGCAGCCGAGTAGTGAGG
AGAGCTCTCAGATTCAGGCAGCTCAGACTCAGAAGAGGAGCGAGCCACTCGGCTGGCTGAGCTGCAGGA
GCAGCTGAAGGCCGTGCACGAACAGCTGGCTGCCTTGTCTCAGGCCCCAGTGAACAAACCAAGAAGAAG
AAAGAGAAGAAGGAAAAGGAAAAGAAGAAGACAAGGACAAAGACAAGAGAAGGAGAAGCACAAGG
CCAAGTCTGAGGAGGAGAAGAAGGCCAAGGCAGCCCCAGCAGCCAAGCAGGCCAGCAGAAAAAGGCTCC
CACCAGAAGGCCAACAGCACAACCACAGCCAGCAGACAGCTCAAGAAGGGCGGCAAGCAGGCATCTGCG
TCCTATGACTCAGAGGAAGAGGAGGAGGCGCTGCCATGAGCTATGATGAAAAGCGACAACCTAGCCTTG
ACATCAACCGGCTGCCCGCGAGAAGCTAGGGCGTGTGGTGCACATCATTCAAGTCTCGGGAGCCCTCGCT
TCGGGACTCAAACCCAGACGAGATTGAGATTGACTTTGAGACCCTGAAGCCAACCAGCTGCGGGAAGT
GAGAGATATGTCAAGTCTTGTTTACAAAAAAGCAGAGGAAACCTTGTCAACAAGCGGGAAGAAGCAGG
CAGCCAAATCGAAAGAGGAGCTAGCTCAGGAGAAGAAAAGGAGCTGGAGAAGCGGCTGCAGGATGTGAG
TGGACAACTGAACAGCAAAAAACCCACTAAGAAAGAGAAGTCCGGCTCAGCTCCCTCAGGAGGCCATCA
AGGCTCAGCAGTAGCAGCTCCTCTGAGTCTGCGAGCAGTAGCTCCAGTGGATCGAGCTCCGACAGCAGTG
ACTCAGAG

ACGCGTACGCGGCCGCTCGAG - GFP Tag - GTTTAA

Protein Sequence: >MG223345 representing NM_023336
 Red=Cloning site Green=Tags(s)

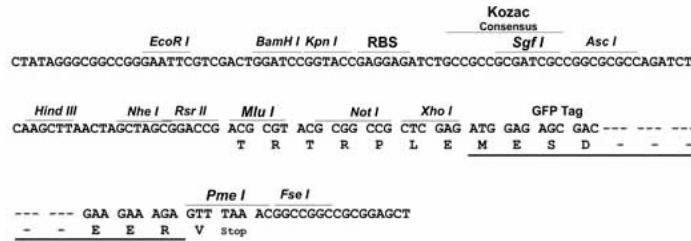
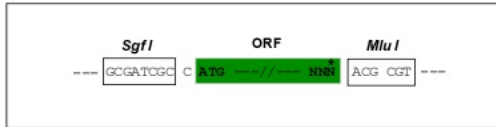
MSTTAAAPTGIPAVPGPVNPPPEVSNPSKPGRKTNQLQYMQNVVVKTLWKHQFAWPFYQPVDAIKLNL
 DYHKI IKNPMDMGTIKKRENNYYWSASECMQDFNTMFTNCYIYNKPTDDIVLMAQALEKIFLQKVAQMP
 QEEVELLPAPKGGKGRKPAAGAQNAGSQVAAVSSVSPATPFQNIPTVSTPVI AATPVPTITANVTSV
 PVPPPTAPPPATPIVPVVPPTPPVVKKKGVKRKADTTTPTTSAITASRSESPPLSEPKQAKVVARRES
 GGRPIKPPKDLLEDGEVPOHAGKKGKLEHLRHCD SILREMLSKKHAAYAWPFYKPVDAEALHLDYHDI
 IKHPMDLSTVKRKMDSREYPDAQGFAADIRLMFSNCYKYNPPDHEVVAMARKLQDVFEMRF AKMPDEPME
 APALPAPTAPIVSKGAESSRSSEESSSSSGSSDSEERATRLAELQEQLKAVHEQLAALSQAPV NPKPKK
 KEKKEKKEKDKDKDKEKEKHKAKSEEEKKAKAAPAAKQAQKKAPT TTKANSTTTASRQLKGGKQASA
 SYDSEEEELPMSYDEKRQLSLDINRLPGEKLRV VHI IQSREPSLRDSNPDEIEIDFETLKPTTLREL
 ERYVKSLCKKQKPLSTSGKKQA AKSKEELAQEKKLEKRLQDVSGQLNSKPKTKKEKSGSAPSGGPS
 RLSSSSSESASSSSSGSSDSSDSE

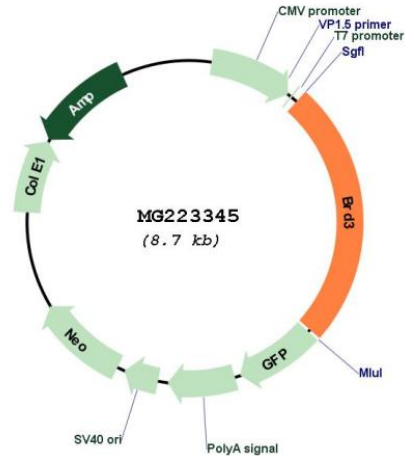
TRTRPLE - GFP Tag - V

Restriction Sites: SgfI-MluI

Cloning Scheme:

Cloning sites used for ORF Shutting:



Plasmid Map:


ACCN: NM_023336

ORF Size: 2178 bp

OTI Disclaimer: The molecular sequence of this clone aligns with the gene accession number as a point of reference only. However, individual transcript sequences of the same gene can differ through naturally occurring variations (e.g. polymorphisms), each with its own valid existence. This clone is substantially in agreement with the reference, but a complete review of all prevailing variants is recommended prior to use. [More info](#)

OTI Annotation: This clone was engineered to express the complete ORF with an expression tag. Expression varies depending on the nature of the gene.

Components: The ORF clone is ion-exchange column purified and shipped in a 2D barcoded Matrix tube containing 10ug of transfection-ready, dried plasmid DNA (reconstitute with 100 ul of water).

Reconstitution Method:

1. Centrifuge at 5,000xg for 5min.
2. Carefully open the tube and add 100ul of sterile water to dissolve the DNA.
3. Close the tube and incubate for 10 minutes at room temperature.
4. Briefly vortex the tube and then do a quick spin (less than 5000xg) to concentrate the liquid at the bottom.
5. Store the suspended plasmid at -20°C. The DNA is stable for at least one year from date of shipping when stored at -20°C.

RefSeq: [NM_023336.3](#)

RefSeq Size: 5429 bp

RefSeq ORF: 2181 bp

Locus ID: 67382

UniProt ID: [Q8K2F0](#)

Cytogenetics: 2 A3

Gene Summary: Chromatin reader that recognizes and binds hyperacetylated chromatin and plays a role in the regulation of transcription, probably by chromatin remodeling and interaction with transcription factors (PubMed:21536911). Regulates transcription by promoting the binding of the transcription factor GATA1 to its targets (PubMed:21536911).[UniProtKB/Swiss-Prot Function]