

## Product datasheet for **MG223337**

### Col4a3 (NM\_007734) Mouse Tagged ORF Clone

#### Product data:

**Product Type:** Expression Plasmids  
**Product Name:** Col4a3 (NM\_007734) Mouse Tagged ORF Clone  
**Tag:** TurboGFP  
**Symbol:** Col4a3  
**Synonyms:** alpha3(IV); [a]3(IV)  
**Mammalian Cell Selection:** Neomycin  
**Vector:** pCMV6-AC-GFP (PS100010)  
**E. coli Selection:** Ampicillin (100 ug/mL)  
**ORF Nucleotide Sequence:** >MG223337 representing NM\_007734  
Red=Cloning site Blue=ORF Green=Tags(s)

TTTTGTAATACGACTCACTATAGGGCGGCCGGAATTCGTCGACTGGATCCGGTACCGAGGAGATCTGCC  
GCC**CGATCGCC**

ATGCACTCCAAGACTGCTCCAAGGTTCTGGTGTCTGCTGCTTACCCTGCTGCTACTCCTGGCTGCCT  
CTCCTGTGGCTAGCAAGGGCTGTGTCTGCAAAGGCAAAGGACAATGCCTCTGCGCGGGGACCAAAGGGGA  
GAAGGGGGAGAAAGGGTTCTGGTTCCTGGATTTCTGGCCAGAAAGGATTTCCAGGCTCTGAAGGC  
TTGGCTGGACCACAGGGACCCAAGGGCTCCCCAGGACTCCGGGACTCACTGGCCCCAAAGGCATCAGGG  
GAATAACTGGATTACCAGGGTTTGCAGGCTCCTCTGGACTTCCAGGCCTCCAGGCCACCCTGGGCTCG  
TGGGCTGGCTGGTTTACCAGGATGCAACGGATCTAAGGGTGAACAAGGATTTCCCGGGCTTTCCCGGCACA  
CCAGGCTATGCAGGGCTCCAGGTCCTGATGGCTTAAAGGACAAAAGGGTGAGCCTGCTCAAGGAGAAG  
ACAGGGGATTCAATGGAAAAGGTGACCTGGGCTCCAGGGTCCAGGCTTCCAGGTTTTTCCGGGACT  
CCCAGGTTTTCCAGGGCTGCCGGTCCACCAGGACCTCCGGGATTTTTGGTTTACCAGGAGCAATGGGA  
CCCAGAGGACCAAAGGCCACATGGCGGATAGCGTGATAGGACAAAAGGAGAAAGGGGTATGAAAGGAT  
TAACAGGACCTCCTGGGCCACCAGGAACAGTGATTTTTACTCACCCAGCCATAACAACAAATCGGACTT  
CAAGGGAGAGAAAGGAGATGAGGGAGAGAGGGGTGAACCCGACCTCCTGGACCTCGGGCCACCTGGA  
GACTCCTATGGATCAGAAAAGGGTGCCTGGAGAGCCTGCTCCTCGGGCAAACCTGAAAAGATGGTG  
CCCTGGCTTCCCTGGCACTGAGGGAGCCAAAGGCAACAGGGGCTTTCTGGGTTGAGGGGTGAAGCTGG  
CATTAAAGGGAAGGAAAGGAGACATTGGCCCCAGGATTTCTGGTCCAACAGAATATTATGACGCATAC  
CTGAAAAGGGAGAGAGAGGAATGCCAGGCCTTCTGGGCCAAAGGAGCCCGTGGCCACAGGGTCCAA  
GTGGTCCCCTGGAGTCCCTGGAAGTCTGGACTGTCAAGGCTGGCCTCAGAGGACCCATTGGATGGCC  
AGGCTTAAAAGGGAGTAAAGGAGAGAGAGGACCCCTGAAAAGACTGTGGGCCCTCCTGGACCCCTG  
GGATGCTCTGGCTCACCAGGTCCACCAGGCCCTCAGGACCTCCAGGATGTCCAGGTGACATTGTTTTTA  
AATGTTCCCTGGTGAGCATGGAATGCCAGGTGACACAGGACCTCCAGGAGTTCAGGACTTGATGGACC  
CAAAGGAGAACCAGGCAGTCCATGCACCGAGTGTCACTGCTTCCAGGGCCCCCTGGAGTCCAGGATTT



CCAGGATTAGATGGTATCAAAGGAATCCCAGGAGGACGAGGTGTGCCTGGTCTGAAGGGAAACCCAGGGT  
CCCCAGGAAGTGCAGGTCTCCAGGATTTGCAGGATTTCCAGGTGACCAAGGGCATCCAGGACTTAAAGG  
GGACAAAGGGGATACACCTCTACCTGGGGCAAGTGGTAAATCCAGGTGATCCTGGACTCAGAGGCCTG  
CCCGGGAGAAAGGGCTTCGATGGAACCTCTGGAGTCCAGGAGCGAAAGGACCACCAGGACCTCAGGGCG  
AACCGGCCTGAGTGAAGGAAAGGGGACCAAGGACCTCCAGGACCTCCTGGATTCCCTGGACCCCCAGG  
ACCTGCAGGACCAGTGGACCACCAGGCTATGGACCTCAAGGAGAGCCAGGTCCAAGGGGAGCCCAAGGA  
GTCCCCGGCGTCTGGACCACCTGGAGAAGCCGGTCTTAAAGGAGAACCAGTACATCAACTCCAGATC  
TAGGTCCCCCAGGCCCTCCAGGGCCCCCTGGTCAGGCTGGCCCCAGAGGTCTACCTGGTTTGCCTGGACC  
GGTGGGAAAATGTGATCCTGGTCTTCTGGACCTGATGGTGAGCCAGGAATTCAGAAAGCTGGATGCCCA  
GGGCTCCAGGACCTAAGGGAAAATCAAGGTTTCCAGGGACAAAAGGATCACCTGGTTGTCTGGGGAAA  
TGGGAAAGCCTGGCCGTCTGGAGAACCAGGCATCCCAGGAGCCAAGGGAGAACCATCCGTAGGCAGGCC  
TGGGAAACCAGGGAAACCAGGCTTCCAGGAGAAAGAGGCAATGCTGGGAAAATGGAGATATTGGACTC  
CCTGGGCTTCCAGGCCTCCCTGGAACCTCAGGAAGAGGCGGGCTTGACGGGCCTCCAGGAGACCAGGAC  
AGCCTGGATCACCTGGAGCAAAGGATCCCAGGAAGGTGCATACCAGGACCCAGGGGCACCAAGGACT  
TCCCGGCTTGAATGGATTGAAAGGGCAACCAGGTGCAAGAGGTGATACCGGGCCAAGGGGAGACCCTGGC  
ATCCCAGGCATGGACAGTCTGGGGTCCCCGGAGATCCTGGACCACCAGGAACACCAGGTTGTCTGGTG  
AGATGGGACCACCTGGACAAAAGGATATCCGGGAGCTCCAGGATTTCCAGGACCACCAGGCGAGAAGG  
AGAGGTTGGAATGATGGGCTATCCTGGAACACTGGCCCTCCGGGGCTTCTGGGAAACCAGGCTCACAG  
GGCAGCGAGGTAGCCTCGGAATCCCAGGAATGAAAGGGGAAAAGGACGCCCCAGGAGCCAAAGGCGAAC  
GAGGAGAGAAAGGAAAACCAGGGCCTTCTCAAACAACACTCTTAAAGGGAGACAAAGGAGAGCCTGGACT  
TAAAGGATTTGTTGGGAATCCAGGTGAGAAAGGAAACAGAGGCAACCCAGGGTTACCAGGTCCGAAAGGC  
CTCGAGGGATTGCTGGGCTACCAGTCTCCAGGCCCTAGAGGAGATACGGGAAGCAGAGGAAAATCCTG  
GAAGACCAGGACCACAGGCATGCCAGGAAGCATGGGGATCATGGGGTGCCAGGCCCTAAAGGGAGAAA  
AGGAACCTCAGGGCTTCCAGTCTAGCTGGAAGACCAGGCTGACAGGGATCCATGGTCCCCAAGGAGAT  
AAGGGGGAGCCGGTTATTTCAGAAGGTGAAGACCAGGACCACCAGGACCAAGGGCGATCCAGGATTGC  
CAGGTGACAAAGGAAAGAAAGGAGAAAGAGGCGTACCTGGCCACCTGGACAATCGGGGCCTGCCGACC  
TGATGGAGCCCCTGGGAGTCTGGGAGTCTGGTCAACCAGGAAAACCAGGTCCTGCTGGTGATTTGGGT  
CTGAAAGGACAGAAAGGCTTCCAGGCCCTCCAGGAAGCACTGGCCCTCCAGGCCCTCCAGGACTCCAG  
GACTTCTGGCCAATGGGTATGAGAGGTGACCAAGGACGTGATGGAATCCTGGTCTCCAGGAGAAAA  
AGGAGAAAACAGGCTTGTGGGGCCTACCCAGGCCAAAAGGGAGCCCTGGTGTACCAGGTGCCAAAGGA  
GACAGGGGAGTCCAGGCTTGTCTGGCCTTCCCGCAGGAAGGGGTTATGGGGGATGTTGGACCCAAAG  
GACCCCAAGGACTGCTGGACTCCAGGGCCACCAGGTCTACCTGGGGCAATTATCCCTGGCCCCAAGG  
AGACAGAGGTCTTCTGGCTTAAGAGGAAATCCAGGTGAGCCAGGTCCCCCTGGACCTCCAGGACCTATC  
GGAAAAGGCATAAAAGGTGACAAAGGATTTATGGGCCACCTGGCCCCAAGGCCTGCCTGGAAGTGTAG  
GGGACATGGGCCACCAGGTTTCCCGGGAGCACCAGGTACCCCGGTCTTCCCGGTGTCAGAGGTGATCC  
AGGATTCCTGGATTTCCAGGCATAAAAGGAGAAAAGGGTAACCTGGATTTCTTGGGCAATTGGACAT  
CCAGGACCAGTTGGGCCAAAGGACCACCAGGTCCACGTGGAAAACCTGGCACTTAAAGTCATCTCTC  
TTCCGGGAAGCCAGGGCCACTGGTGTACCTGGACAGCCAGGAATGAAAGGAGACCTGGACCCCTGGG  
ACTGCCAGGAATCCAGGACCTGTGGCCAAAGAGTAAACCAGGCAAGGATGGGAAACCAGGAACCTCCA  
GGACCAGTGGTACAAAGGGCAACAAGGGCTTGAAGGACAGCAAGGCCACCTGGTCTGGATGGATTGC  
CAGGCTTAAAGGGAAATCCTGGTACAGGGGAACGCCGGCCACTGGTACAAGAATGCGAGGCTTCACTCT  
CACCCGACACAGTCAAACCACGGCCATTCTTCACTGCCCTGAAGGAACACAGCCACTCTATAGTGGGTTT  
TCTCTTCTTTTGTACAAGGAAACAAACGTGCACATGGACAAGACCTAGGTACTCTGGCAGCTGCCTGC  
AGCGATTACCACAATGCCGTTCTTATTCTGTAACATCAATAATGTATGTAACCTTGCATCACGAAATGA  
TTATTCACTGGCTGTCAACACCAGCTCTGATGCCAATGGACATGGCTCCAATTAGTGGCAGAGCTCTC  
GAACCCATATATTAGCAGATGCACCGTCTGTGAAGTCCAGCAATGGCCATAGCTGTTACAGTCAAACCTA  
CTGCTATCCCTCCGTGTCCCAGGACTGGGTTTCTCTCTGAAAGGTTTTTCTTTTATTATGTTCAAG  
TGCAGGCTCTGAGGGTGTGGACAAGCACTTGCCTCGCCTGGCTCCTGCCTGGAAGAATCCGAGCCAGT  
CCATTTATAGAATGCCATGGACGAGGGACATGTAACCTACTCAAACTCCTACAGTTTCTGGCTGGCTT  
CGCTGAACCCAGAAAGAAATGTTCCAGAAAACCTATTCCATCAACTGTGAAAGCTGGAGACTTAGAGAAAAT  
CATAAGCCGCTGTGAGGTGTGCATGAAGAAAAGACAT

ACGCGTACGCGGCCGCTCGAG - GFP Tag - GTTTAA

Protein Sequence:

>MG223337 representing NM\_007734  
 Red=Cloning site Green=Tags(s)

MHSKTAPRFLVFLLLTLLLLLAASPVASKGCVCKGKGQCLCAGTKGEKGEKGVPGSPGFPGQKGFPGPEG  
 LPGPQGPKGSPLPGLTGPKGIRGITGLPGFAGPPGLPGLPGHPGPRGLAGLPGCNGSKGEQGFPGFPGT  
 PGYAGLPDGLKGQKGEPAQGEDRGNFKGDPGPPGVPFGQGFPLPGFPGPAGPPGPPGFGLPGAMG  
 PRGPKGHMGSVIGQKGERGMKGLTGPPGPPGTVIFTLTQPYNKSDFKGEKGEGERGEPGPPGSPGPPG  
 DSYGSEKAGPEPGPRGKPGKDGAPGFPGTGAKGNRFPGLRGEAGIKGRKGDIGPPGFPPTTEYYDAY  
 LEKGERGMPGLPGPKGARGPQPSGPPGVPSPGLSRPGLRGPIGWPLGKSKGERGPPGKDTVGPPL  
 GCPGSPGPPGPPGCPGDIIVFKCSPGEHMPGDTGPPGVPGLDGPKEGSPCTECHCFGPPGVPGF  
 PGLDGIKIGIPGGRVPLKGNPSPGSAGLPGFAGFPDQGHPLKGDGDTPLPWGQVGNPDPGLRGL  
 PGRKGFDTGPGGAKGPPGQGEPAISGRKGDQGPPGPPGFPGPPGAPGAGPPGYPGQEPGPKGAQG  
 VPGVLGPPGEAGLKGEPTSTPDLGPPGPPGPPGQAGPRGLPGLPGVPVKCDPGLPGDGEPIPEAGCP  
 GPPGPKGNQGFPGTKGSPGCPGEMGKPRGPEGIPGAKGEPVGRPGKPGKPGFPGERNAGENDIGL  
 PGLPGLPGTPGRGGLDPPGDPGQPGSPGAKGSPGRCIPGPRGTQGLPGLNGLKQPGRRGDTGPKGDPG  
 IPGMDRSGVPGDPGPPGTGCPGEMGPPGQKGYPGAPGFPGPPGKGEVGMGYPGTTGPPGLPGKPGSQ  
 GQRGSLGIPGMKGEKGRPGAKGERGEKGPSPQTTLLKGDKEPGLKGFVGNPGEKGNRNPGLPGPKG  
 LEGLPGLGPPGPRGDTGSRGNPGRPHGMPSMGIMGVPKGRKGTSLPGLAGRPGLTGIHGPQGD  
 KGEPGYSEGARPPGPKGDPGLPGDKKKGERGVPGPPGQSGPAGPDGAPGSPGSPGHGPKPGAGDLG  
 LKQKGFPPGPGSTGPPGPPGLPGLPGPMGMRGDQGRDIPGPPGKGETGLLGAYGPKGSPGVPKAGK  
 DRGVPGLSGLPGRKGMGDVGPQPPGTAGLPGPPGLPGAIIIPGPKGDRGLPGLRGNPGEPPGPPGPI  
 GKGIKGDKGMGPPGPKGLPGTVGDMGPPGFPAGPTPLPGVGRDPPGFPFGPIKGEKGNPGLPFIGH  
 PGPVGPKPPGPRGKPGTLKVISLPGSPGPPGVPQPMKGDPLGLPGLPGCPGRGKPGKDGKPGTP  
 GPAGTKGNKGLKQGGPGLDGLPGLKGNPDRGTPATGTRMRGFIIFTRHSQTTAIPSCPEGTQPLYSGF  
 SLLFVQGNKRAHQDLGLTGSCLQRFTTMPFLFCNINNVCFASRNDYSYWLSTPALMPMDMAPIISGRAL  
 EPYISRCTVCEGPAMAIIVHSQTTAIPPCPDWVSLWKGFSFIMFTSAGSEGAGQALASPGSCLEEFRAS  
 PFIECHGRGTCNYYSNSYSFWLASLNPERMFRKPIPSTVKAGDLEKIIISRCQVCMKKRH

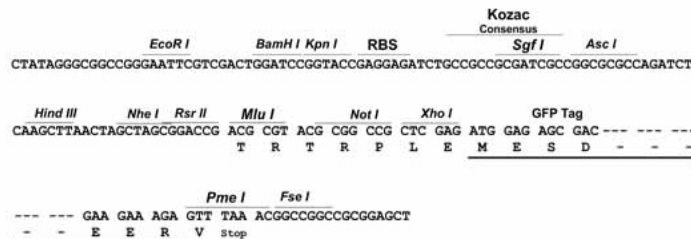
TRTRPLE - GFP Tag - V

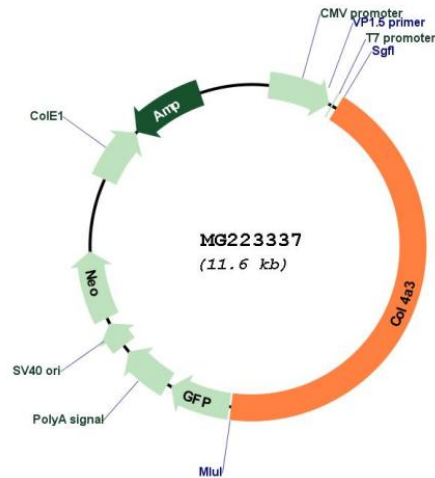
Restriction Sites:

Sgfl-MluI

Cloning Scheme:

Cloning sites used for ORF Shutting:



**Plasmid Map:**


**ACCN:** NM\_007734

**ORF Size:** 5007 bp

**OTI Disclaimer:** The molecular sequence of this clone aligns with the gene accession number as a point of reference only. However, individual transcript sequences of the same gene can differ through naturally occurring variations (e.g. polymorphisms), each with its own valid existence. This clone is substantially in agreement with the reference, but a complete review of all prevailing variants is recommended prior to use. [More info](#)

**OTI Annotation:** This clone was engineered to express the complete ORF with an expression tag. Expression varies depending on the nature of the gene.

**Components:** The ORF clone is ion-exchange column purified and shipped in a 2D barcoded Matrix tube containing 10ug of transfection-ready, dried plasmid DNA (reconstitute with 100 ul of water).

**Reconstitution Method:**

1. Centrifuge at 5,000xg for 5min.
2. Carefully open the tube and add 100ul of sterile water to dissolve the DNA.
3. Close the tube and incubate for 10 minutes at room temperature.
4. Briefly vortex the tube and then do a quick spin (less than 5000xg) to concentrate the liquid at the bottom.
5. Store the suspended plasmid at -20°C. The DNA is stable for at least one year from date of shipping when stored at -20°C.

**RefSeq:** [NM\\_007734.2](#), [NP\\_031760.2](#)

**RefSeq Size:** 8609 bp

**RefSeq ORF:** 5010 bp

**Locus ID:** 12828

UniProt ID: [Q9QZS0](#)

Cytogenetics: 1 C5

Gene Summary: Type IV collagen is the major structural component of glomerular basement membranes (GBM), forming a 'chicken-wire' meshwork together with laminins, proteoglycans and entactin/nidogen.[UniProtKB/Swiss-Prot Function]