

Product datasheet for **MG223319**

Evx1 (NM_007966) Mouse Tagged ORF Clone

Product data:

Product Type: Expression Plasmids
Product Name: Evx1 (NM_007966) Mouse Tagged ORF Clone
Tag: TurboGFP
Symbol: Evx1
Synonyms: Evx-1
Mammalian Cell Selection: Neomycin
Vector: pCMV6-AC-GFP (PS100010)
E. coli Selection: Ampicillin (100 ug/mL)
ORF Nucleotide Sequence: >MG223319 representing NM_007966
 Red=Cloning site Blue=ORF Green=Tags(s)

TTTTGTAATACGACTCACTATAGGGCGGCCGGAATTCGTCGACTGGATCCGGTACCGAGGAGATCTGCC
 GCC**CGATCGCC**

ATGGAGAGCCGAAAGGACATGGTTATGTTTCTGGATGGGGTCCAGCTTGGCACTCTGGTTGGTAAGAGGG
 TCTCTAATTTGTCCGAAGCCGTGAGCAGCCCGTGCCTGAACCGCCAGAGAAGATGGTCCCCACGGTTG
 CCTGAGCCCGGAGCCGGCCCTCCGACTTCCCGGGAGCGTGGCGGGGAGGCCAGGAGGAGGCCGGTC
 GATGGACTAGCAGGCAGTCTGCAGGGTGGCGCCGAGCCACGGTCTGCTGGAGCGCCATGCTTGGCC
 CGGGACCCCACTCCCTCCGCGACAGCCTCTCTGGCCAAGGGCAACCTAGTAGCTCAGACACCGAATC
 GGATTTCTATGAAGAAATCGAGGTGAGCTGCACCCAGACTGCGCCACCGGGAACGCCGAGTACCAGCAC
 AGCAAAGCGCCAGGCTCCGATGCTCTGGGTAGCAGTCTACCAAGTGGCAGCGAGGCCCAAGAGTAACG
 GTGGCAGCGGGCGGAGCGGCTCTCAAGGACCCCTGGCCTGCAGCGCCAGTGACCAGATGCGCCGATACCG
 CACGGCCTTTACCCGGGAGCAGATTGCAAGGCTGGAGAAAGATTCTACAGGGGAACTACGTTTCAAGA
 CCGCGGAGATGCGAACTGGCAGCAGCCTTAAACCTTCTGAAACTACCATCAAGGTGTGGTTTCAAGC
 GGCGCATGAAGGACAAGCGTCAGCGGCTGGCCATGACGTGGCCGACCCGGCCGACCCTGCCTTCTACAC
 CTACATGATGAGCCACGCGGCGGGCGGGCGGCTGCCCTACCCCTTCCCGTCGACCTGCCCTTGCCC
 TACTACTCGCCGTGGCCTGGCGCGCGTCCGCCCTCGGCCGCGCCTCGCCCTTCAAGCGCCCCC
 TCGCCCGCTCGACACCTTCCGCGTCTCTCGCAGCCCTACCCACGGCCCGAACTGCTGTGCGCCTTCCG
 CCACCCGCGCTCTATCCCGGCCGCGCACGGACTCGGCGCCTCGGCCGCGCCGCGCTGCCGCGGG
 CCCTGCTCCTGCCTGCCTGCCACAGCGGCCCGGCAACGGGCTGGCGCCAGGGCCGCCCGCTGCCG
 CCGCCTCAGACTTCACTTGTGCCTCCACCTCCCGCTCGGACTCCTTCTCACGTTCCGCCCTCTGTGCT
 CAGCAAGGCTCCTCCGTGGCGGCTTGGACCAGAGAGAGGAGTGGCCCTCACCAGA

ACGCGTACGCGGCCGCTCGAG - GFP Tag - GTTTAA



[View online »](#)

Protein Sequence: >MG223319 representing NM_007966
Red=Cloning site Green=Tags(s)

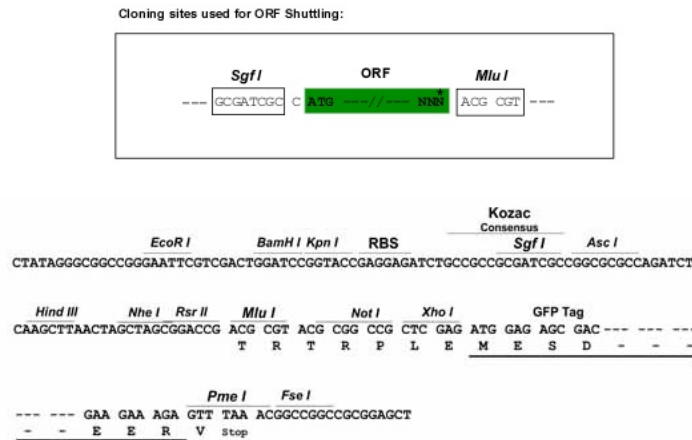
MESRKDMVMFLDGGQLGTLVGKRVSNLSEAVSSPLPEPPEKMPVPHGCLSPRAGPPTSRRERGGGGQEEEPV
 DGLAGSAAAGLGAEPRSAGAAMLGPGPPVPSADSLSGQGQPSSSDTESDFYEEIEVSCTPDCATGNAEYQH
 SKAPGSDALGSSPTSGSEAPKSNGGSGGSGSQTACASDQMRRYRTAF TREQIARLEKEFYRENYVSR
 PRRCELAALNLPETTIKVFQNRMRKDKRQRLAMTWHPADPAFYTYMMSHAAAAGGLPYFPFPHLPLP
 YYSPVGLGAASAASAAAPFSGPLRPLDTFRVLSQPYPRPELLCAFRHPPLYGPAHGLGASAAAAAAG
 PCSCLACHSGPANGLAPRAAAAAASDFTCASTSRSDSFLTFAPSVLSKASSVAALDQREEVPLTR

TRTRPLE - GFP Tag - V

Chromatograms: https://cdn.origene.com/chromatograms/ja2280_d06.zip

Restriction Sites: SgfI-MluI

Cloning Scheme:



ACCN: NM_007966

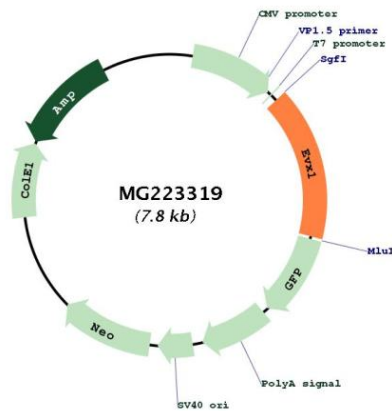
ORF Size: 1248 bp

OTI Disclaimer: Due to the inherent nature of this plasmid, standard methods to replicate additional amounts of DNA in *E. coli* are highly likely to result in mutations and/or rearrangements. Therefore, OriGene does not guarantee the capability to replicate this plasmid DNA. Additional amounts of DNA can be purchased from OriGene with batch-specific, full-sequence verification at a reduced cost. Please contact our customer care team at custsupport@origene.com or by calling 301.340.3188 option 3 for pricing and delivery.

The molecular sequence of this clone aligns with the gene accession number as a point of reference only. However, individual transcript sequences of the same gene can differ through naturally occurring variations (e.g. polymorphisms), each with its own valid existence. This clone is substantially in agreement with the reference, but a complete review of all prevailing variants is recommended prior to use. [More info](#)

OTI Annotation:	This clone was engineered to express the complete ORF with an expression tag. Expression varies depending on the nature of the gene.
Components:	The ORF clone is ion-exchange column purified and shipped in a 2D barcoded Matrix tube containing 10ug of transfection-ready, dried plasmid DNA (reconstitute with 100 ul of water).
Reconstitution Method:	<ol style="list-style-type: none"> 1. Centrifuge at 5,000xg for 5min. 2. Carefully open the tube and add 100ul of sterile water to dissolve the DNA. 3. Close the tube and incubate for 10 minutes at room temperature. 4. Briefly vortex the tube and then do a quick spin (less than 5000xg) to concentrate the liquid at the bottom. 5. Store the suspended plasmid at -20°C. The DNA is stable for at least one year from date of shipping when stored at -20°C.
RefSeq:	<u>NM_007966.4</u> , <u>NP_031992.1</u>
RefSeq Size:	2877 bp
RefSeq ORF:	1251 bp
Locus ID:	14028
UniProt ID:	<u>P23683</u>
Cytogenetics:	6 B3
Gene Summary:	May play a role in the specification of neuronal cell types. May play a role in the dorsoventral specification of mesodermal cell fate.[UniProtKB/Swiss-Prot Function]

Product images:



Circular map for MG223319